



## Test Procedure for the NCP59152MNADGEVB Evaluation Board

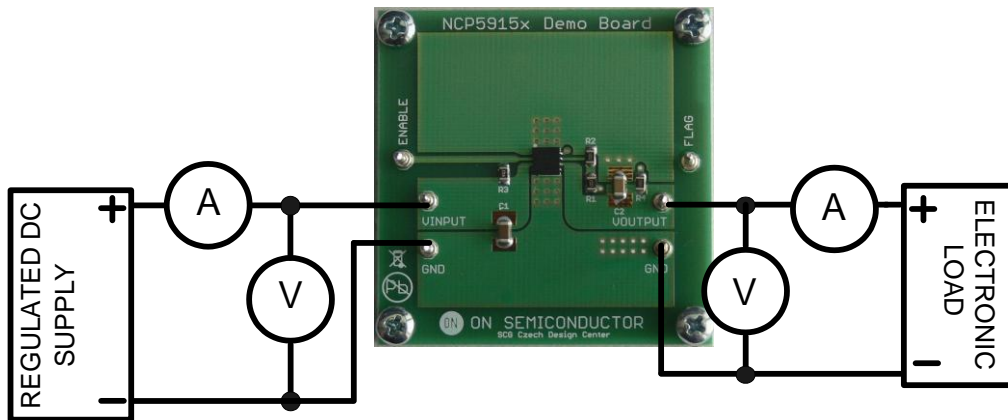


Figure 1: Test Setup

### Test Procedure:

1. Connect the test setup as shown in Figure 1
2. Apply an input voltage,  $V_{in} = 3.5 \text{ V dc}$
3. Apply  $I_{out} = 10 \text{ mA}$  load
4. Check that  $V_{out}$  is  $2.5 \text{ V}$
5. Increase  $I_{out}$  load to  $1.5 \text{ A}$
6. Check that  $V_{out}$  is  $2.5 \text{ V}$
7. Check by Multimeter referenced to GND that  $V_{flag}$  is roughly  $2.5 \text{ V}$
8. Decrease input voltage to  $V_{in} = 2.24 \text{ V}$
9. Check that  $V_{flag}$  is less than  $0.4 \text{ V}$
10. Power down the load
11. Power down  $V_{input}$
12. End of test