



FLORENCE-3R – Cost effective lighting with mid-power LEDs

LEDiL's FLORENCE-3R lens family offers 6 different optical patterns, which enable you to handle the most important indoor universal lighting situations.

Symmetrical, patent pending Z30, Z60 and Z90 lenses (30°, 60° & 90° respectively) give you a low glare rating with low lens surface luminance (no bright points) and extremely uniform illumination on the floor. Lens version to be chosen depends mainly on the height of the space - see next page for more detailed information.

ZT25 is a special asymmetric lens for retail / supermarket corridor and shelf

lighting; maximize the amount of light on the items on the shelves, while the corridor floor is adequately but not excessively illuminated. This energy efficient design eliminates light spill.

The latest additions to the family are FLORENCE-O with oval shape light distribution and FLORENCE-ZT25-S with asymmetric wall-washing beam.

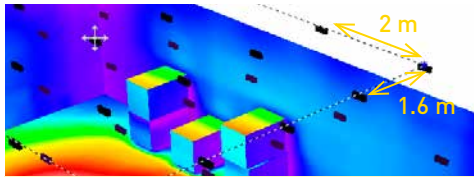
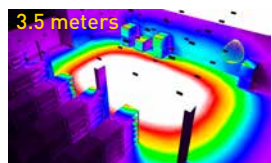
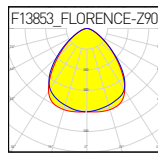
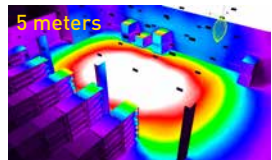
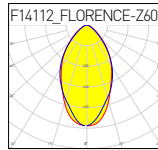
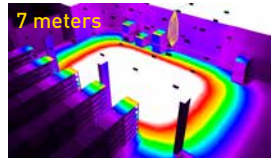
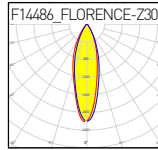
If a lighting situation so requires, an optional shade can be applied on the lens to get to a UGR (Unified Glare Rating) value of less than 19 (without shade lenses give up to low 20s)

Shade not compatible with FLORENCE-ZT25 and -ZT25-S optics

APPLICATION EXAMPLE

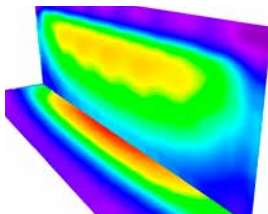
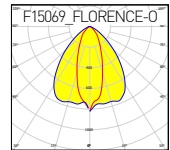
Industrial lighting with FLORENCE-Z30, Z60 and Z90

- Range of beam distributions for different technical lighting needs and installation heights
 - Optimized for the best efficacy in the market (> 90%)
 - Typical application installation heights
 - Z30: 7 m
 - Z60: 5 m
 - Z90: 3.5 m
 - Distance between luminaires: 1.6 x 2 m
- Same illuminance levels on the floor level



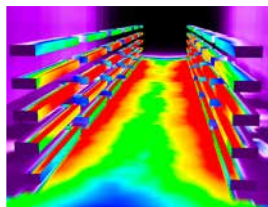
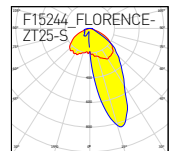
Warehouse aisle lighting with F15069_FLORENCE-O

- Luminaires are installed in the aisle centerline
- Fixture luminous flux 3300 lm
- Luminaire installation height 8 m
- Luminaire spacing 8.3 m
- Number of luminaires 6 pcs
- Shelf height 7 m
- Distance between shelves 2 m
- E_{av} : 43lx, E_{min} : 39lx, E_{max} : 46lx, u_0 : 0.919



Wall washing with F15244_FLORENCE-ZT25-S

- Luminous flux 1500 lm
- Mounting height 3,2 m
- Distance from the wall 1 m
- Distance between luminaires 1,5 m
- LED LG5630
- E_{av} : 205 lx, E_{max} : 262 lx, u_0 : 0.534



Store aisle lighting with 6 pcs of F14170_FLORENCE-ZT25

- Optics installed along the centreline at 3.8 m intervals
- Mounting height 3.5 m, aisle width 3 m
- Luminaire luminous flux 4413 lm
- E_{av} : 186 lx, E_{max} : 230 lx, U_0 : 0.516
- Double asymmetric design designed to give focus on the products.
- Energy efficient design eliminates light spill.

