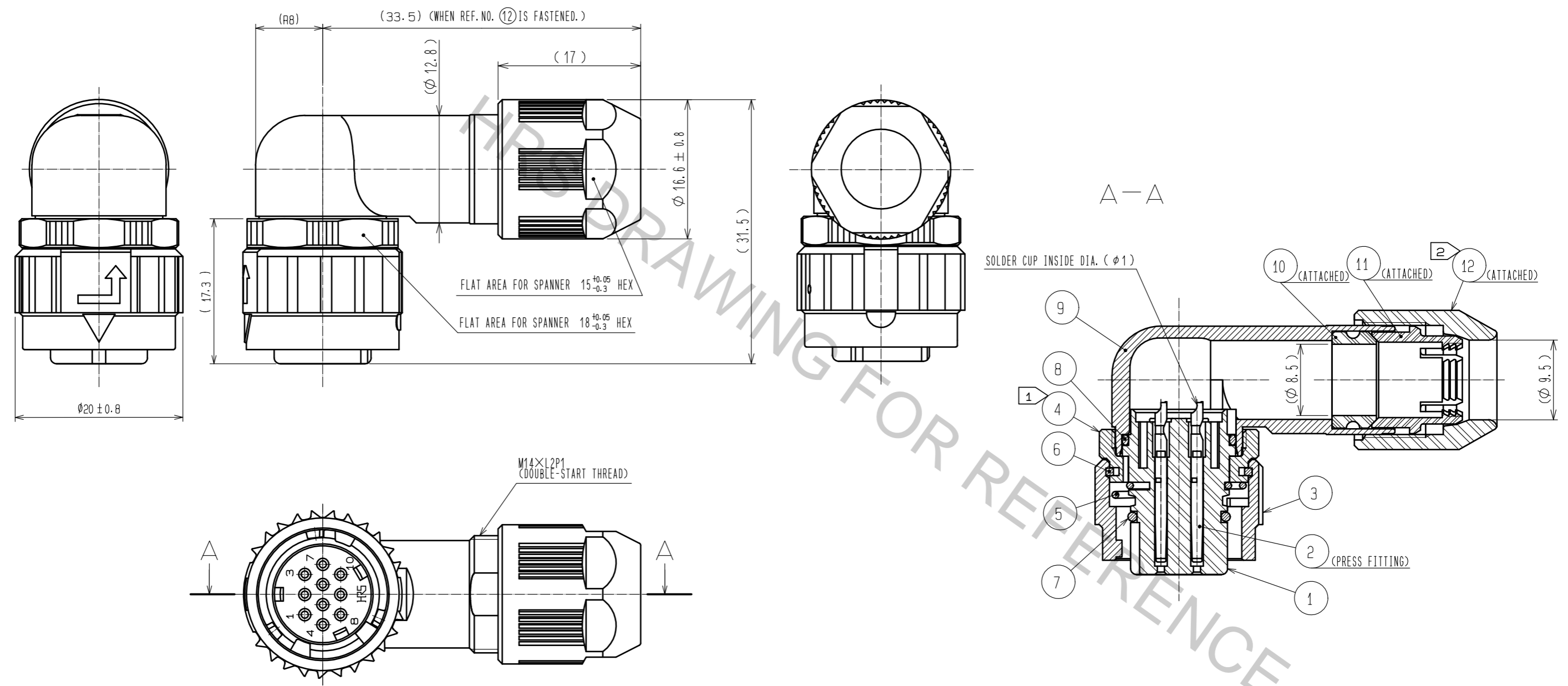


Aug.1.2018 Copyright 2018 HIROSE ELECTRIC CO., LTD. All Rights Reserved.
 In case that the application demands a high level of reliability, such as automotive,
 please contact a company representative for further information.



NOTES ① THE RECOMMENDED TIGHTENING TORQUE OF REF NO. ④: 0.9 TO 1 N · m.
 THE RECOMMENDED ADHESIVE OF REF NO. ④: LOCTITE 243 MADE BY HENKEL JAPAN LTD.
 ② THE RECOMMENDED TIGHTENING TORQUE OF REF NO. ⑫: 0.9 TO 1 N · m.
 THE RECOMMENDED ADHESIVE AND PRIMER OF REF NO. ⑫: LOCTITE 243 AND LOCK PRIMER 7649 MADE BY HENKEL JAPAN LTD.
 3 ROTATION EXAMPLE ARE SHOWN FOR REF. NO. ①, ④, ⑨, AND ⑫.
 4 THE CABLE PULL AND TWISTING STRENGTH AND OTHER CHARACTERISTICS MAY DIFER, DEPENDING ON THE CABLE STRUCTURE.
 PLEASE CONFIRM BEFORE THE USE.

5	STAINLESS STEEL		12	POLYPHENYLENE SULFIDE (BLACK)	UL94V-0			
4	ZINC ALLOY	NICKEL PLATING	11	POLYAMIDE (WHITE)	UL94V-0			
3	ZINC ALLOY	NICKEL PLATING	10	HYDROGENATION ACRYLONITRILE BUTADIENE RUBBER	(BLACK)			
2	PHOSPHOR BRONZE	CONTACT AREA : GOLD 0.2μm min. TERMINAL AREA : GOLD FLASH. UNDER PLATING : NICKEL 2μm min.	9	ALUMINIUM ALLOY	NICKEL PLATING			
			8	ACRYLONITRILE BUTADIENE RUBBER	(BLACK)			
			7	ACRYLONITRILE BUTADIENE RUBBER	(BLACK)			
1	POLYPHENYLENE SULFIDE (BLACK)	UL94V-0	6	PHOSPHOR BRONZE	NICKEL PLATING			
NO.	MATERIAL	FINISH . REMARKS	NO.	MATERIAL	FINISH . REMARKS			
UNITS mm		SCALE 2 : 1	COUNT 	DESCRIPTION OF REVISIONS		DESIGNED	CHECKED	DATE
APPROVED : HY. KOBAYASHI 18.03.16			DRAWING NO. EDC-117298-31-00					
CHECKED : HY. KOBAYASHI 18.03.16			PART NO. HR08D-12WLPK-10S(31)					
DESIGNED : DS. MATSUNE 18.03.16			CODE NO. CL108-0264-1-31					
DRAWN : DS. MATSUNE 18.03.16								