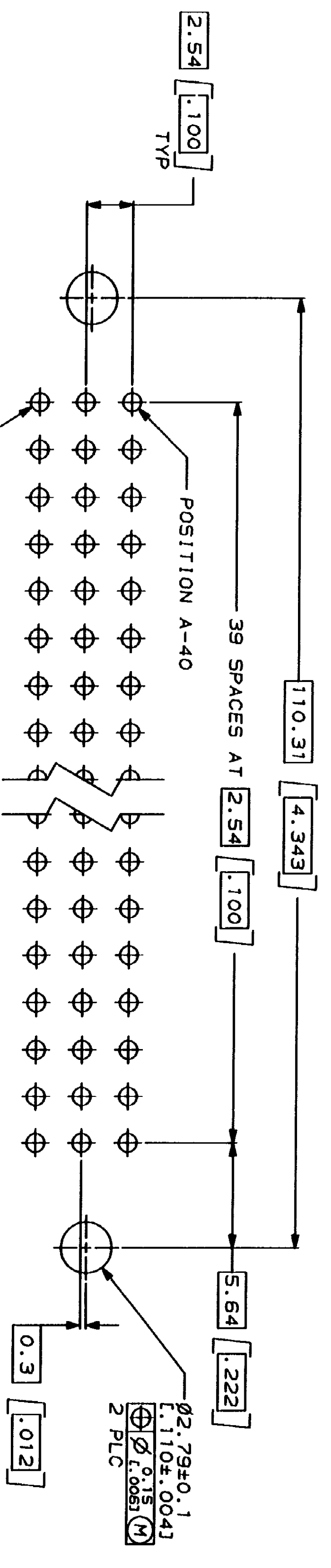
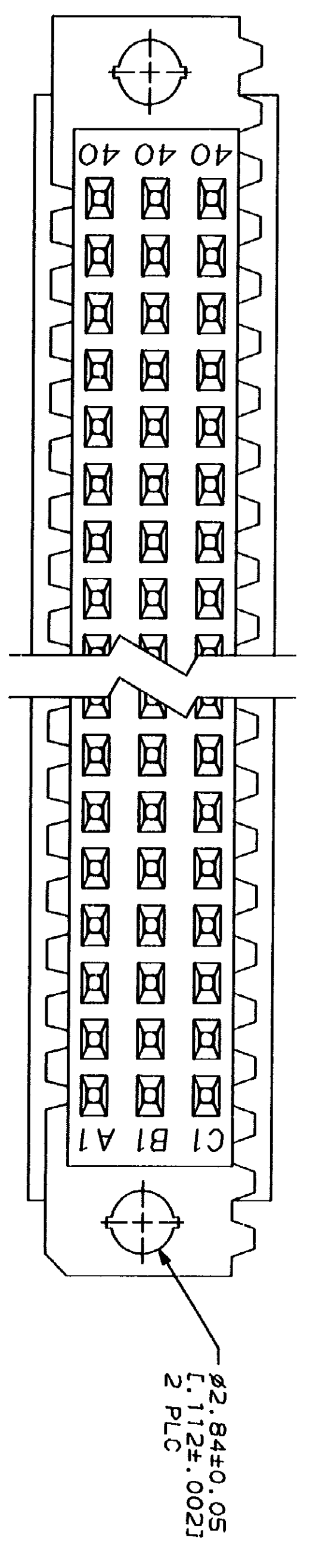
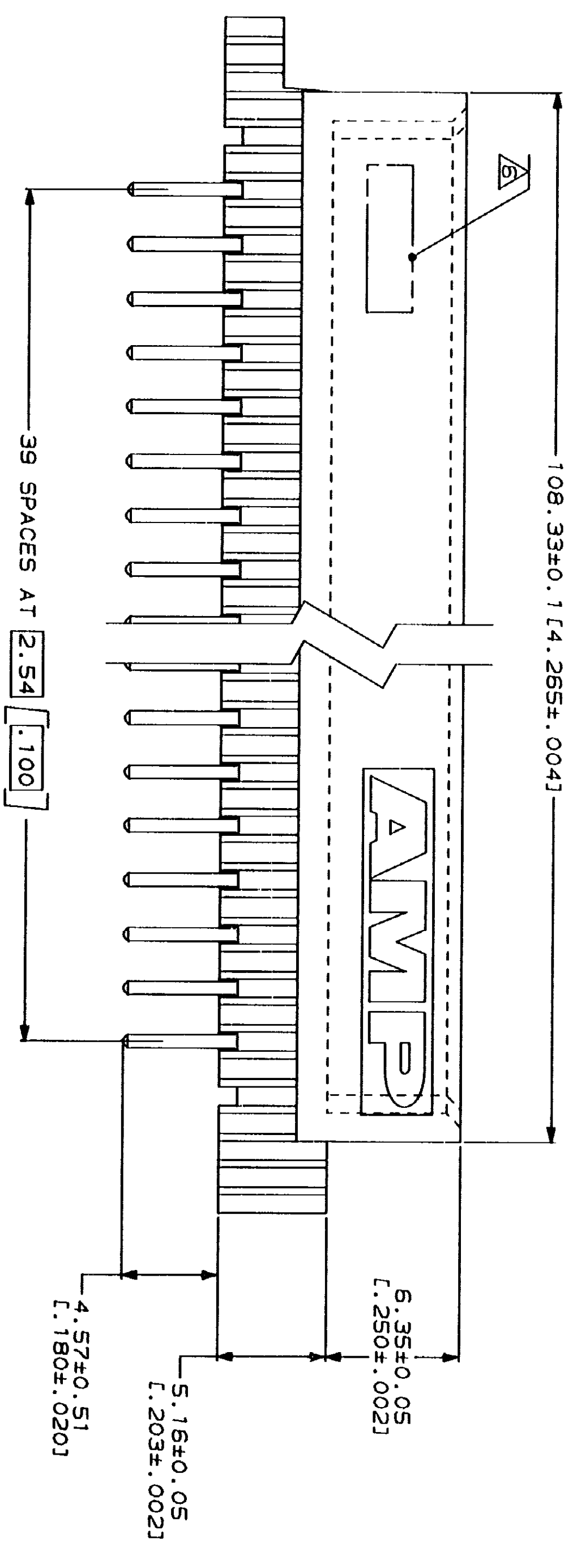
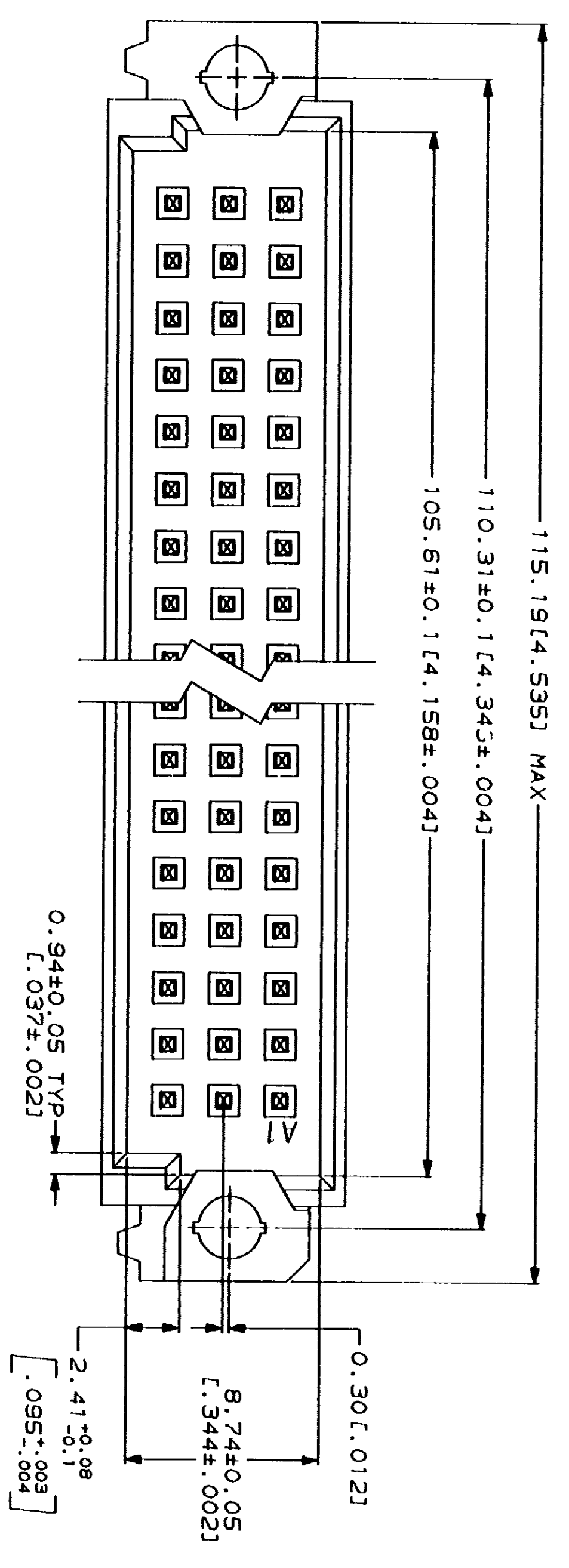
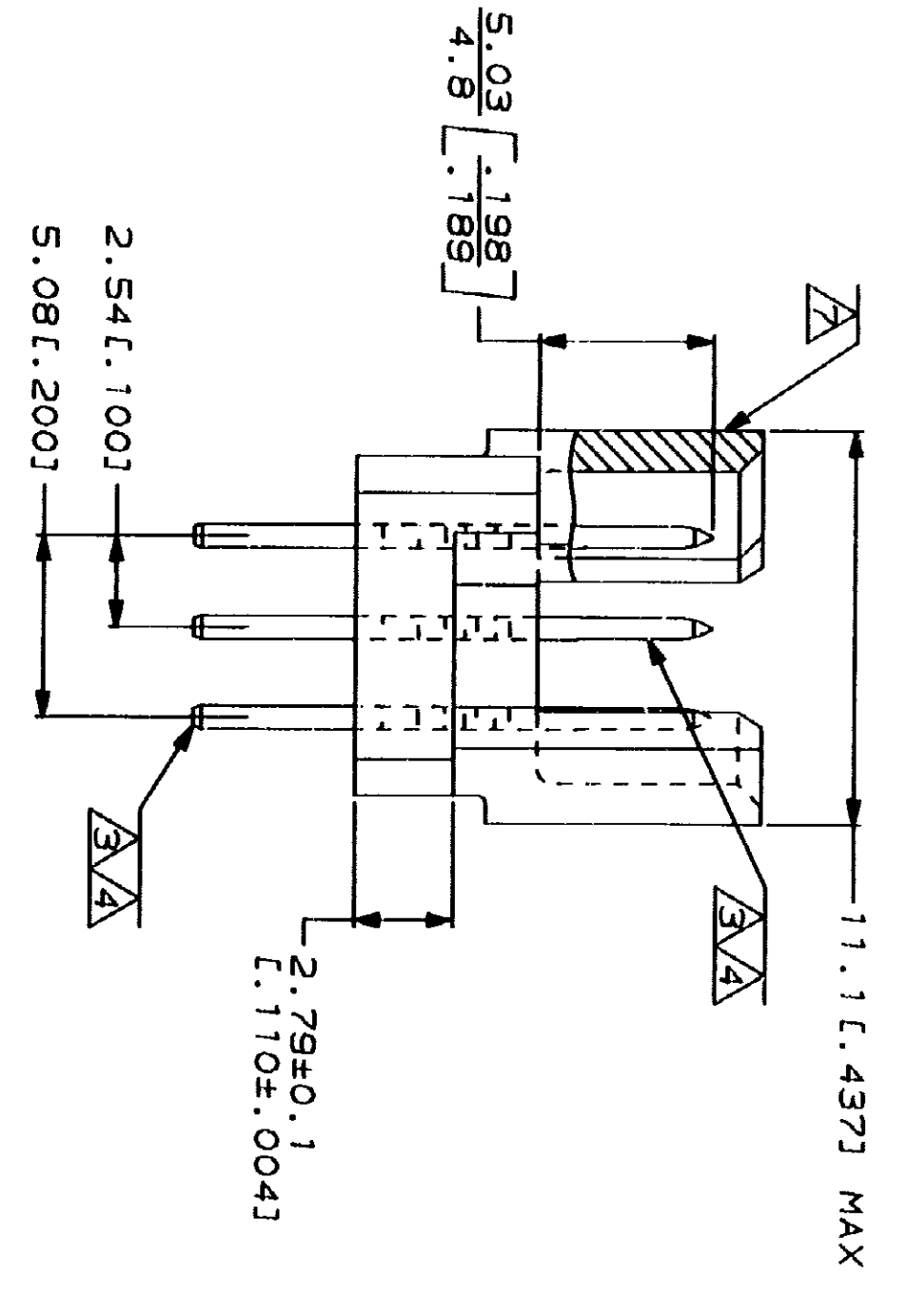


LOC	DATE	ZONE	REV	DESCRIPTION	DATE	APP'D
AD 25			0	DRAWN		
			B	ECN A05586, A05640	8/18/91	LSB
			C	ECN A05876	11/14/91	LSB
			D	ECN A05871	12/8/91	LSB
			E	ECN A05255	8/2/93	LSB
			F	EC 0010-1559-93	11/8/93	LSB
			G	EC 0010-0436-94	3/25/94	LSB



PC BOARD LAYOUT



- △ HOUSING MATERIAL: GLASS-FILLED POLYESTER. COLOR: GRAY.
- △ POST MATERIAL: BRASS.
- △ POST FINISH: DIN 41612 CLASS 3 IN CONTACT AREA.
- △ TIN-LEAD PLATE ON POSTS.
- △ POST FINISH: DIN 41612 CLASS 2 IN CONTACT AREA.
- △ TIN-LEAD PLATE ON POSTS.
- △ RECOMMENDED HOLE SIZE FOR MANUAL APPLICATION OF CONNECTOR ONTO PC BOARD.
- △ [PART NUMBER, DATE CODE] MARKED THIS APPROXIMATE AREA.
- △ MARKING ON THIS SIDE.

SUPERSEDED BY 550910-5

REV	DATE	DESCRIPTION
1-40		
1-40		

NOTES	POSITIONS LOADED	ROWS LOADED	NO. OF LOADED POSITIONS	ASSY PART NUMBER
	C	B A		

DO NOT SCALE PRINT.	UNLESS SPECIFIED DIMENSIONS IN MM (INCHES)	1 PLC DEC ± 0.1 (0.004)	2 PLC DEC ± 0.131 (0.005)	ANGLES	MATERIAL	HOUSING	POST	FINISH

DR	DATE	NAME	APPROVED	DATE	NAME	APPROVED	DATE	NAME
L. BRINER	3/18/91							
D.C. RUBENDALL	3/26/91							
D.C. RUBENDALL	3/26/91							
K.R. PARKER	3/26/91							

CUSTOMER DRAWING

11-498-94 141813 00049 Rev 11-88