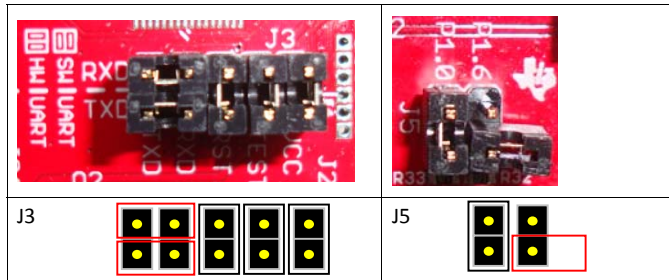


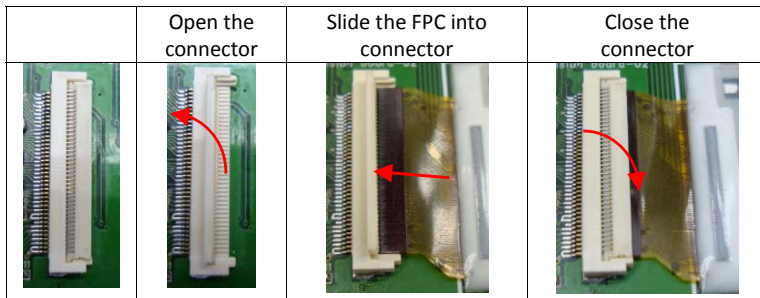
EPD Extension Kit Quick Start

- This quick start guide is for Texas Instruments (TI) MSP 430 LaunchPad(MSP-EXP430G2).

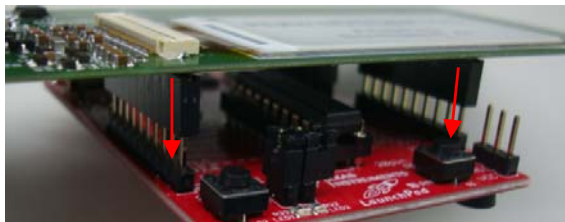
1. Adjust the J3 and J5 jumpers of LaunchPad (rev. 1.5)



2. Slide the FPC of EPD into the FPC connector of EPD extension board



3. Stack the EPD extension board on LaunchPad



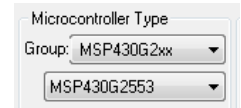
4. Download firmware of LaunchPad. Two different project source codes:

- supports the Arduino-based code on Energia IDE hosted by repaper.org: <http://www.repaper.org/doc/code.html>
- supports TI CCStudio v5.4 working with "EPD Kit Tool" hosted by Pervasive Display (PDi) website: http://www.pervasivedisplays.com/kits/ext_kit
 - EPD Extension Board v1.xx for TI LaunchPad (TI CCS v5.4)
 - EPD Kit Tool v1.x installer

※ The instructions below are for programming firmware by NOT downloading source code from Repaper's GitHub. How to program code by the Energia, please refer to <http://www.repaper.org/doc/code.html#example-programs>

5. Program firmware to MSP430 of LaunchPad

- Use an USB to mini-USB cable that provided in the TI LaunchPad box to connect between computer's USB Port and LaunchPad's mini-USB port
- Using FET-Pro430
 - Download the FET-Pro430 Lite software from [Elprotron. Elprotron Inc.'s website](http://www.elprotron.com)
 - Start the FET-Pro430 Lite, Select the group of Microcontroller Type to "MSP430G2xx" and the second dropdown list to "MSP430G2553".

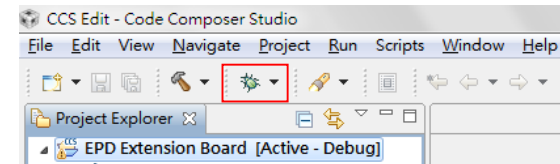


- Click to select the out file ("EPD Extension Board.out" in "Debug" folder).
- Click to start programming firmware and make sure you get the status.



Using TI CCStudio

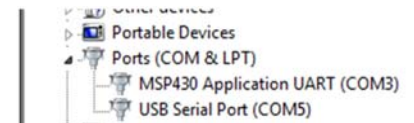
- Start your CCStudio and point to the project workshop. Click [OK].
- Click on the [Debug] button of tool bar.



- Once the download process is done, the LaunchPad board is now built and tested of the firmware code. Click the button go back to CCStudio Edit.

6. Installing EPD Kit Tool

- Execute the EPD Kit Tool installer and follow the instructions on the screen. The installer will also install the driver (MSP430 Application UART) to your computer.
- After installing the EPD Kit Tool, the default program directory is located at "C:\Program Files\Pervasive Displays\EPD Kit Tool". There is some demonstration images at "EPD Kit Tool\images" folder of User's Documents.
- Run "EPD Kit Tool".



7. Getting started with EPD Extension Kit

- Click the [Scan] button to detect the TI LaunchPad development board. Click [Connect] button to get connection.
- Please choose the EPD size that you just connected with the EPD extension board. The size selected must match the EPD size.
- Click [Load Image] button at "Drawing" tab to select a correct size image to download on EPD.
- How to work with EPD Kit Tool in details, please kindly refer to EPD extension kit User Manual.

