

SIGN	DATE	DESCRIPTION	APPROVER

THIS IS CAD DRAWING, DO NOT REVISE MANUALLY!!!

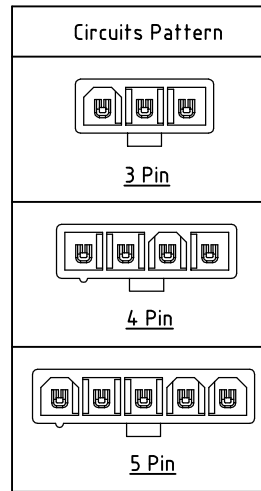
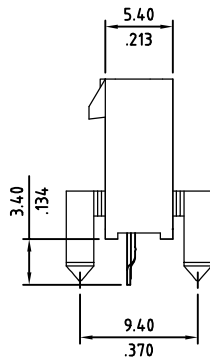
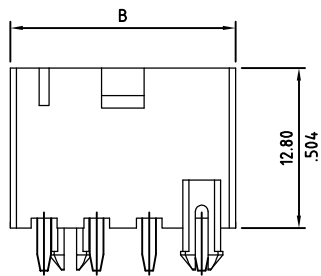
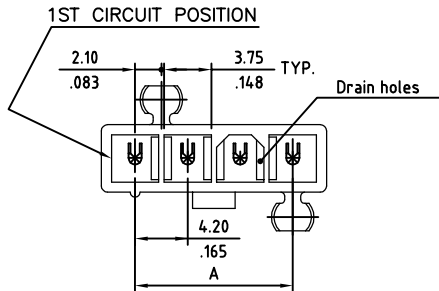
Material

- Body: Nylon 6T
- Color: Natural
- Contacts: Brass
Plating: Tin over Nickel
other options available, MOQ may be required
- Flammability: UL94V-0

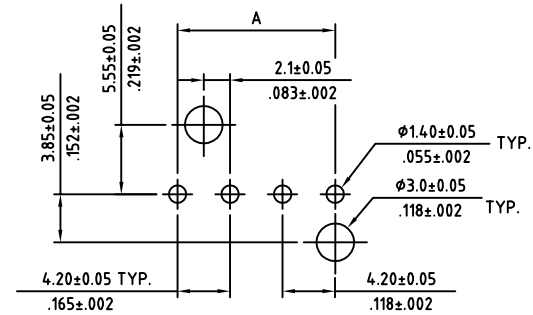
Electrical

- Current: 9A max
- Voltage: 600V AC(r.m.s.)
- Dielectric Withstanding: 1500 VAC for one minute
- Insulation Resistance: >1000 MΩ
- Contact Resistance: <10 mΩ
- Operating Temperature: -25°C ~ 85°C

RoHS Compliant



Circuits	Dimension	
	A	B
03	8.4(.331)	13.8(.543)
04	12.6(.496)	18.0(.709)
05	16.8(.661)	22.2(.874)



Recommended P.C. Board Layout



THESE DRAWINGS AND SPECIFICATIONS ARE THE PROPERTY OF ON-SHORE TECHNOLOGY, INC. AND SHALL NOT BE REPRODUCED, COPIED OR USED IN ANY MANNER WITHOUT THE PRIOR WRITTEN CONSENT OF ON-SHORE TECHNOLOGY, INC.

TITLE		420B1VXX20 series, 4.20mm latch'n lock vertical, dip solder header, with pegs, 1-row			
PART NO.	420B1VXX20	XX - circuits	DWG NO.	420B1VXX20.DWG	
APPROVED	CHECKED	DESIGNED	DRAWN	4050	
		Tony 2006.06.07	Tony 2006.06.07	Tolerance	
				X. ±0.38.015	
				X.X ±0.25/.010	
				X.XX ±0.10/.004	
				X° ±1°	
				UNIT: mm	
				SCALE: NONE	
				REV: A	
				SHEET: 01/01	