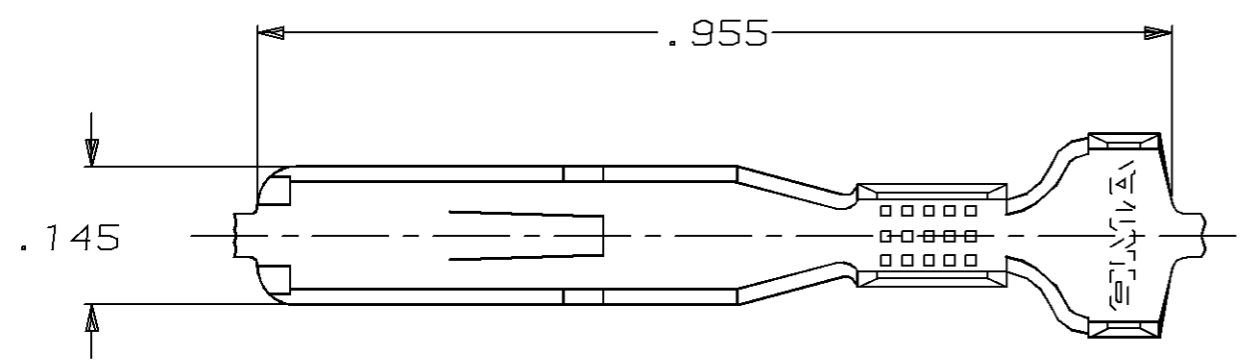
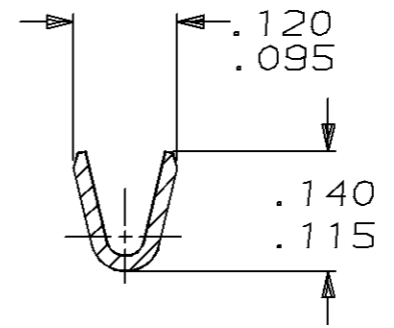
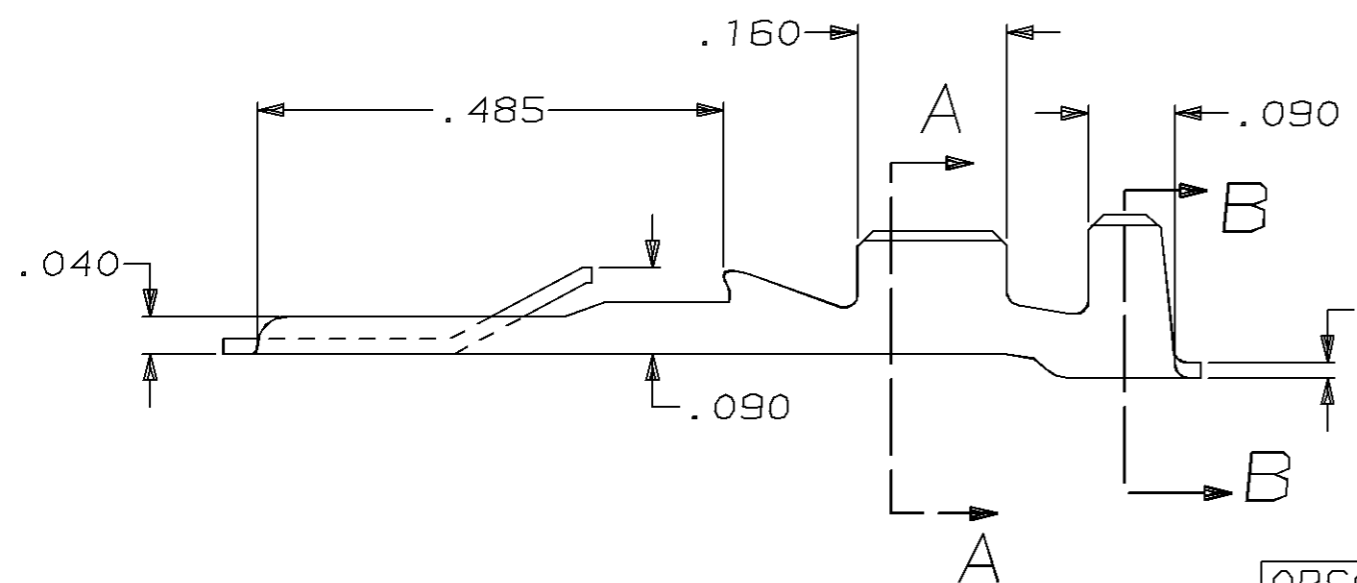


THIS DRAWING IS UNPUBLISHED. RELEASED FOR PUBLICATION, 19 .  
 © COPYRIGHT 19 BY AMP INCORPORATED. ALL INTERNATIONAL RIGHTS RESERVED.

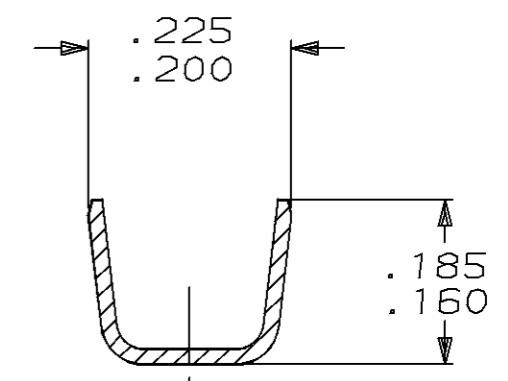
LOC	DIST	P	F	ZONE	LTR	REVISIONS	DATE	APPD
AF	50				M	REDRAWN PER 0016-95	1/24/95	JR/JG



1 CONTINUOUS STRIP ON REELS.  
 2 FOR FOREIGN PRODUCTION ONLY.



SECTION A-A



SECTION B-B

**OBSOLETE**  
**OBSOLETE**

.090-.130  
 OR  
 (TWO) .110 MAX

#20-#16 AWG

TIN .000080 MIN	H04 BRASS	<del>60434-3</del>
-	H04 PH05 BRZ	<del>60434-2</del>
PRE-TIN	H04 BRASS	60434-1

F	.180	.220	F	.080	.064	(2) #20
					.069	16
					.060	18
					.055	20
TYPE	WIDTH	STRIP LENGTH ±.015	TYPE	WIDTH	±.002 HEIGHT	WIRE
INSUL BARREL CRIMP			WIRE BARREL CRIMP			

DO NOT SCALE PRINT. UNLESS SPECIFIED DIMENSIONS IN INCHES TOLERANCES ON:  
 2 PLC DEC ± -  
 3 PLC DEC ± .015  
 ANGLES ± -

DR	1/24/95
CHK	JR RUTH
APPD	MS FEHER
APPD	J GILLESPIE
APPD	R REINER
PRODUCT SPEC	-

**AMP** AMP Incorporated  
 Harrisburg, PA 17105-3608

NAME  
 CHANNEL TAB, FASTIN-FASTON,  
 .187 SERIES

MATERIAL  
 SEE TABLE

FINISH  
 SEE TABLE

APPLICATION SPEC	114-2023
WEIGHT	-

SIZE	CAGE CODE	DRAWING NO
B	00779	C-60434
SCALE	5:1	SHEET
		1 OF 1

THIS DRAWING IS A CONTROLLED DOCUMENT FOR AMP INCORPORATED. IT IS SUBJECT TO CHANGE AND THE CONTROLLING ENGINEERING ORGANIZATION SHOULD BE CONTACTED FOR THE LATEST REVISION.