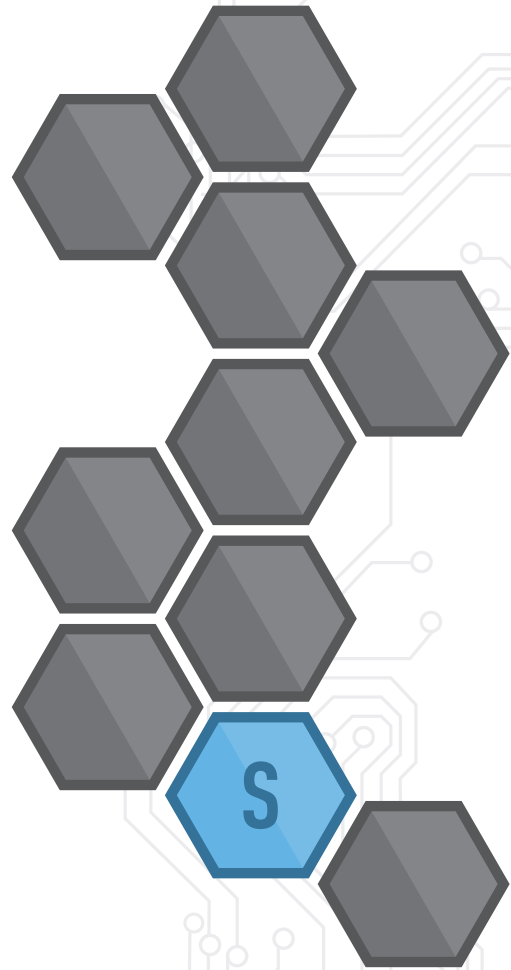


Panasonic

Sensors

Line Card Catalog



800-344-2112 | na.industrial.panasonic.com | industrial@us.panasonic.com

S

SENSORS

na.industrial.panasonic.com/products/sensors

Passive Infrared

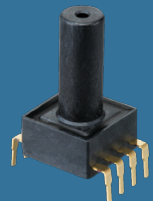
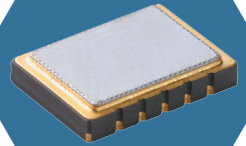
Infrared Array: Grid-EYE

Passive Light: NaPiCa

Air Pressure

Acceleration

Active Light



		Series	Current Usage	Operating Voltage (VDC)	Circuit Stability Time	Range	Lens Color	Output	Detection Angle	Profile (mm)*	Lens Diameter (mm)
Passive Infrared	PaPIRs	EKMB	1µA, 2µA, 6µA	2.3-4.0	1µA/2µA - 25s (typ.)	5m, 12m	White, Black, Pearl White	Digital, Analog	5m: 94° (H), 82° (V)	5m: 14.4	5m: 9.5
					6µA - 30s (max.)				12m: 102° (H), 92° (V)	12m: 20.2	12m: 20.7
		EKMC	170µA	3.0-6.0	30s (max.)	5m, 12m	White, Black, Pearl White	Digital, Analog	5m: 94° (H), 82° (V)	5m: 14.4	5m: 9.5
									12m: 102° (H), 92° (V)	12m: 20.2	12m: 20.7
	NaPI0n	AMN2	170µA	4.5-5.5	45s (max.)	2m, 5m, 10m	Black, White	Analog	Slight motion: 91° (H), 91° (V)	Slight motion: 15.2	Slight motion: 12.7
									5m: 100° (H), 82° (V)	5m: 14.5	5m: 9.5
									Spot detection: 38° (H), 22° (V)	Spot detection: 15.1	Spot detection: 8.9
									10m: 110° (H), 93° (V)	10m: 18.52	10m: 17.4
		AMN3	170µA	3.0-6.0	30s (max.)	2m, 5m, 10m	Black, White	Digital	Slight motion: 91° (H), 91° (V)	Slight motion: 15.2	Slight motion: 12.7
									5m: 100° (H), 82° (V)	5m: 14.5	5m: 9.5
									Spot detection: 38° (H), 22° (V)	Spot detection: 15.1	Spot detection: 8.9
									10m: 110° (H), 93° (V)	10m: 18.52	10m: 17.4
AMN4	46µA	2.2-3.0	30s (max.)	2m, 5m, 10m	Black, White	Digital	Slight motion: 91° (H), 91° (V)	Slight motion: 15.2	Slight motion: 12.7		
							5m: 100° (H), 82° (V)	5m: 14.5	5m: 9.5		
							Spot detection: 38° (H), 22° (V)	Spot detection: 15.1	Spot detection: 8.9		
							10m: 110° (H), 93° (V)	10m: 18.52	10m: 17.4		

*Profile measured from top of sensor to base (does not include pin length)

		P/N	Pixel Array	Op. Voltage	Amplification Factor	Viewing Angle	Frame Rate	Accuracy (typical)	Output Resolution	Temp. Range (Measured Object)	Op. Temp. Range	Size (mm)
Infrared Array: Grid-EYE	AMG8831	64 (8x8)	3.3VDC	High Gain	60°	10/1 fps	±2.5° C	0.25°C	0 ~ +80°C	0 ~ +80°C	11.6 (L) 8.0 (W) 4.3 (H)	
	AMG8832	64 (8x8)	3.3VDC	Low Gain	60°	10/1 fps	±3.0° C	0.25°C	-20 ~ +100°C	-20 ~ +80°C	11.6 (L) 8.0 (W) 4.3 (H)	
	AMG8851	64 (8x8)	5VDC	High Gain	60°	10/1 fps	±2.5° C	0.25°C	0 ~ +80°C	0 ~ +80°C	11.6 (L) 8.0 (W) 4.3 (H)	
	AMG8852	64 (8x8)	5VDC	Low Gain	60°	10/1 fps	±3.0° C	0.25°C	-20 ~ +100°C	-20 ~ +80°C	11.6 (L) 8.0 (W) 4.3 (H)	

	Category	P/N	Photocurrent*	Max. Power Dissipation	Reverse Voltage (recommended)	Peak Sensitivity Wavelength	Switching Time	Dimensions (mm)
Passive Light: NaPbCa	Through-hole	AMS302	260µA*	40mW	1.5 to 6V	580nm	8.5ms (rise), 8.5ms (fall)	5.3 (H), 5.8 (Ø)

* Ev = 100lx (Ev Brightness, Fluorescent lamp is used as light source)

		Series	Pressure Range	Precision	Drive Voltage / Current	Current Consumption	Dimensions (mm)*	Pressure Inlet Hole Direction
Air Pressure	PS-A Series (Built-in amp & compensating circuit)	ADP51*0	6kPa to 1000kPa, (±100kPa)	Standard: ±1.25% FS Economy: ±4% FS Low Pressure: ±2.5% FS	Standard: 5±0.25V DC Economy: 3±0.15V DC Standard: 5±0.25V DC	Standard: 10mA max. Economy: 3mA max. Low Pressure: 10mA max.	7.2(L)x7.0(W)x6.5(H)	Opposite to pins
		ADP51*1 ADP51A11					7.2(L)x7.0(W)x8.5(H)	
		ADP51B61					10.4(L)x10.4(W)x10.7(H)	
		ADP51B62					10.4(L)x10.4(W)x19.3(H)	
	PF/PS Series	ADP41	4.9kPa to 980.7kPa	Standard: ±1.25% FS Economy: ±4% FS Low Pressure: ±2.5% FS	1 - 1.5mA	Voltage input dependent	7.2(L)x7.0(W)x8.5(H)	Opposite to pins
		ADP42					7.2(L)x7.0(W)x8.5(H)	Same as pins
		ADP11					8.6(L)x10.0(W)x9.3(H)	Opposite to pins
		ADP12					8.6(L)x10.0(W)x9.3(H)	Same as pins

*Profile measured from top of sensor to base (does not include pin length)

	Series	P/N	Operation Voltage	Detection Range	Detection Sensitivity	Current Consumption	Output	Dimensions (mm)	Mounting	
Acceleration	1-Axis	GF1	AGF10711	5V DC	±30°	3.0 V/g	10mA	Analog	58(L) x 36.5(W) x 33(H)	Direct mount
			AGF11311	5V DC	±90°	1.333 V/g	10mA	Analog	85(L) x 40(W) x 37(H)	Metal bracket
			AGF10712	12V DC	±30°	3.0 V/g	15mA	Analog	58(L) x 36.5(W) x 33(H)	Direct mount
			AGF11312	12V DC	±90°	1.333 V/g	15mA	Analog	85(L) x 40(W) x 37(H)	Metal bracket
			AGF10713	24V DC	±30°	3.0 V/g	15mA	Analog	58(L) x 36.5(W) x 33(H)	Direct mount
			AGF11313	24V DC	±90°	1.333 V/g	15mA	Analog	85(L) x 40(W) x 37(H)	Metal bracket
	2-Axis	GS1	AGS11151	5V DC	±2g	1 V/g	5mA	Analog	8.5(L) x 6.2(W) x 1.6	PCB
			AGS11351	5V DC	±1.5g	1.333 V/g	5mA	Analog	8.5(L) x 6.2(W) x 1.6	PCB
		GS2	AGS21631	3V DC	±2g	0.6 V/g	1.8mA	Analog	8.5(L) x 6.2(W) x 1.6	PCB
			AGS21831	3V DC	±1.5g	0.8 V/g	1.8mA	Analog	8.5(L) x 6.2(W) x 1.6	PCB
			AGS21151	5V DC	±2g	1 V/g	2mA	Analog	8.5(L) x 6.2(W) x 1.6	PCB
			AGS21351	5V DC	±1.5g	1.333 V/g	2mA	Analog	8.5(L) x 6.2(W) x 1.6	PCB

		Series	Trigger Function	Operating Voltage (VDC)	Detection Range (cm)	Dimensions (mm)	Ambient Brightness Rating
Active Light	Thin, short, Vertical mounting	AMA14	Built-in oscillation circuit	4.5 to 5.5	5-15	20(L) x 10(W) x 12.7(H)	30,000 lux
		AMA11	External				
	Short, Horizontal mounting	AMBA14	Built-in oscillation circuit	4.5 to 5.5	5-10	20(L) x 10(W) x 19.5(H)	30,000 lux
				5.5 to 27			
		AMBA11	External	4.5 to 5.5			
				5.5 to 27			
	Middle, Horizontal mounting	AMBA24	Built-in oscillation circuit	4.5 to 5.5	20 - 80	31.2(L) x 14(W) x 23.1(H)	30,000 lux
				5.5 to 27			
		AMBA21	External	4.5 to 5.5			
				5.5 to 27			
	Long, Horizontal mounting	AMBA34	Built-in oscillation circuit	4.5 to 6.5	30 - 200	46(L) x 20(W) x 29.7(H)	30,000 lux
				6.5 to 27			
		AMBA31	External	4.5 to 6.5			
				6.5 to 27			
Long, Vertical mounting	AMBA34	Built-in oscillation circuit	4.5 to 6.5	30 - 200	46(L) x 20(W) x 29.7(H)	30,000 lux	
			6.5 to 27				
	AMBA31	External	4.5 to 6.5				
			6.5 to 27				

Over 65,000 Part Numbers Are Just a Click Away

Visit the NEW Panasonic Website Today at:
na.industrial.panasonic.com



Quickly and Easily Search Product Details

Discover The Latest Panasonic Products



Easily Find Inventory By Part Number

Locate Distributors & Get Support



Panasonic



industrial@us.panasonic.com | 1-800-344-2112



Panasonic

Panasonic Industrial Devices Sales Company of America
Two Riverfront Plaza, 7th Floor, Newark, NJ 07102

800-344-2112 | na.industrial.panasonic.com | industrial@us.panasonic.com