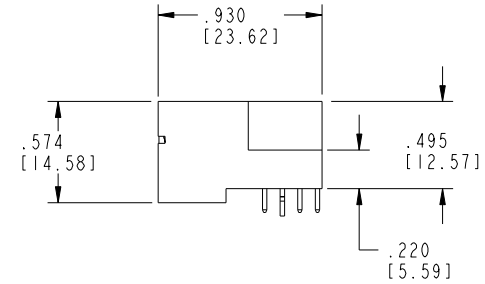
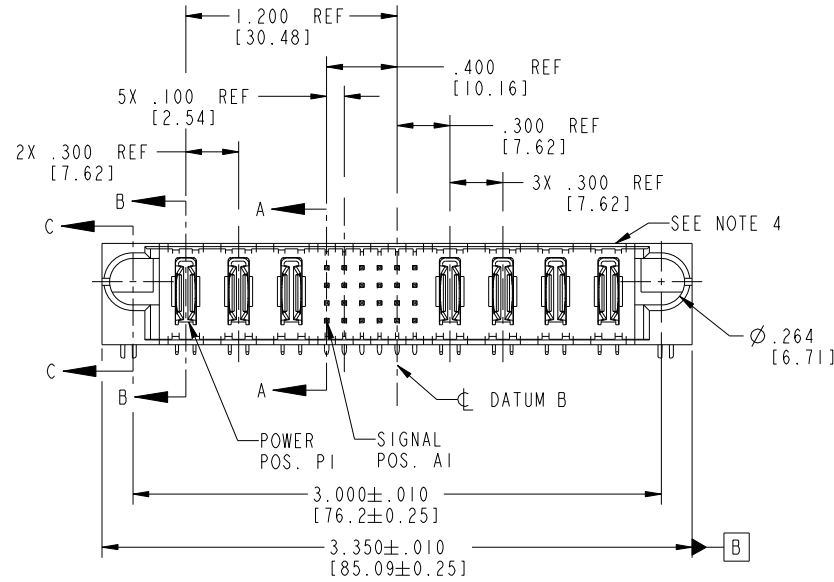
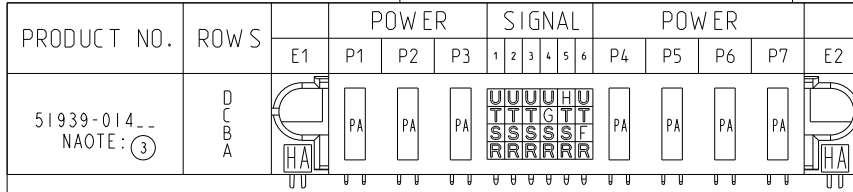


Tous droits strictement réservés. Reproduction ou communication à des tiers interdite sous quelque forme que ce soit sans autorisation écrite du propriétaire. Propriété de c FCI. Droits de reproduction FCI.



All rights strictly reserved. Reproduction or issue to third parties in any form whatever is not permitted without written authority from the proprietor. Property of FCI. Copyright FCI.



| CODE | DIM "M" MATING LENGTH | CONTACT TYPE |
|------|-----------------------|--------------|
| F    | .220 [5.59]           | SIGNAL       |
| G    | .220 [5.59]           | SIGNAL       |
| H    | .220 [5.59]           | SIGNAL       |
| R    | .270 [6.86]           | SIGNAL       |
| S    | .270 [6.86]           | SIGNAL       |
| T    | .270 [6.86]           | SIGNAL       |
| U    | .270 [6.86]           | SIGNAL       |
| PA   | N/A [N/A]             | POWER        |
| HA   | N/A [N/A]             | HOLD-DOWN    |

|                       |                |     |          |                                       |                        |            |  |                                   |  |
|-----------------------|----------------|-----|----------|---------------------------------------|------------------------|------------|--|-----------------------------------|--|
| mat'l code SEE NOTE 2 |                |     |          | tolerances unless otherwise specified |                        | CUSTOMER   |  | FCI                               |  |
| ltr                   | ecn no.        | dr  | date     | linear                                | .XX±.01/0.X±0.3        | COPY       |  | www.fciconnect.com                |  |
| A                     | V20788         | JWS | 04-23-02 | angles                                | .XXX±.005/0.XX±0.13    | projection |  | title 3P + 24S + 4P               |  |
| B                     | V21572         | CGD | 10/02/02 |                                       | .XXX±.0020/0.XXX±0.051 | INCH/MM    |  | RIGHT ANGLE SOLDER HEADER         |  |
| C                     | V03-0670       | MEM | 6/12/03  |                                       | 0°±2°                  | scale      |  | product family PwrBlade code 213  |  |
| D                     | DG05-0338      | SJ  | 09/19/05 | dr                                    | J. SHAFFER 04-23-02    | 1:1        |  | size dwg no A 51939-014 sheet 213 |  |
| E                     | DG06-0008      | JMG | 01/07/06 | engr                                  | M. MOSTOLLER 04-23-02  |            |  | 1 of 4                            |  |
| F                     | DG08-0273      | WD  | 12/22/08 | chr                                   | M. MOSTOLLER 04-23-02  |            |  |                                   |  |
|                       |                |     |          | appd                                  | M. MOSTOLLER 04-23-02  |            |  |                                   |  |
| sheet index           | revision sheet | F 1 | F 2      | F 3                                   | F 4                    |            |  |                                   |  |

1 | 2

Pro/E

3 |

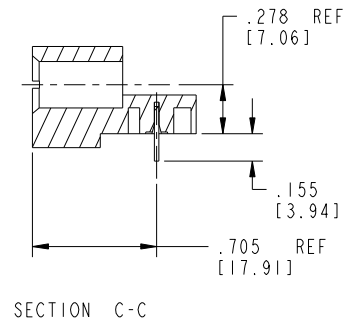
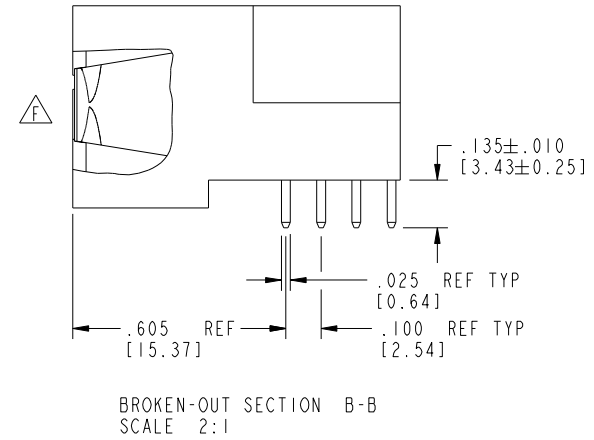
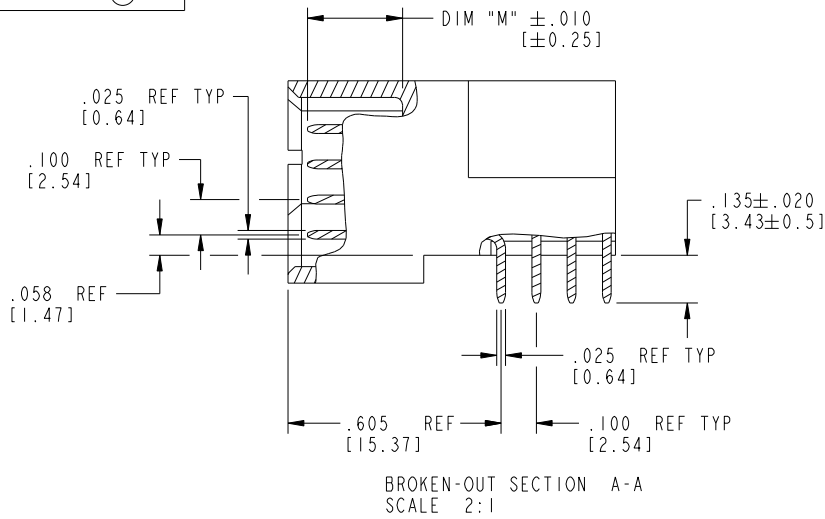
cage code 22526

4

Tous droits strictement réservés. Reproduction ou communication à des tiers interdite sous quelque forme que ce soit sans autorisation écrite du propriétaire. Propriété de c FCI. Droits de reproduction FCI.

All rights strictly reserved. Reproduction or issue to third parties in any form whatsoever is not permitted without written authority from the proprietor. Property of FCI. Copyright FCI.

PRODUCT NUMBER  
51939-014\_\_  
NOTE: ③



|             |                |            |      |                                       |                        |            |  |                           |  |                    |        |
|-------------|----------------|------------|------|---------------------------------------|------------------------|------------|--|---------------------------|--|--------------------|--------|
| mat'l code  |                | SEE NOTE 2 |      | tolerances unless otherwise specified |                        | CUSTOMER   |  | FCI                       |  | www.fciconnect.com |        |
| ltr         | ecn no.        | dr         | date | linear                                | .XX±.01/0.X±0.3        | COPY       |  | title                     |  |                    |        |
| F           |                |            |      |                                       | .XXX±.005/0.XX±0.13    | projection |  | 3P + 24S + 4P             |  |                    |        |
|             |                |            |      | angles                                | .XXX±.0020/0.XXX±0.051 |            |  | RIGHT ANGLE SOLDER HEADER |  |                    |        |
|             |                |            |      | dr                                    | J. SHAFFER 04-23-02    |            |  | product family            |  | PwrBlade           | code   |
|             |                |            |      | enrg                                  | M. MOSTOLLER 04-23-02  | scale      |  | size                      |  | dwg no             | 213    |
|             |                |            |      | chr                                   | M. MOSTOLLER 04-23-02  | 1:1        |  | A                         |  | 51939-014          | sheet  |
|             |                |            |      | appd                                  | M. MOSTOLLER 04-23-02  |            |  |                           |  |                    | 2 of 4 |
| sheet index | revision sheet |            |      |                                       |                        |            |  |                           |  |                    |        |

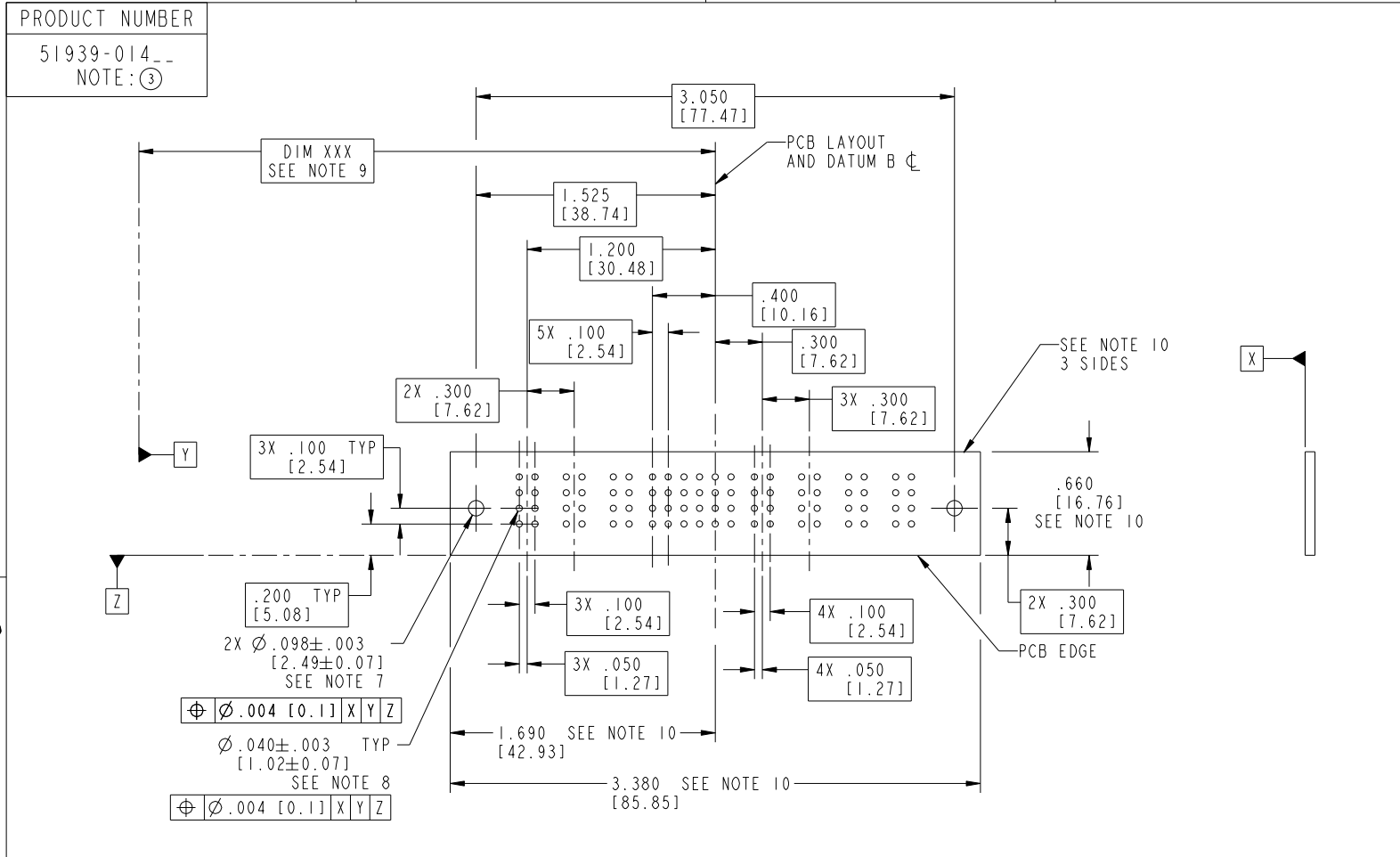
cage code 22526

Pro/E

Tous droits strictement reserves. Reproduction ou communication a des tiers interdite sous quelque forme que ce soit sans autorisation écrite du propriétaire. Propriete de c FCI. Droits de reproduction FCI.



All rights strictly reserved. Reproduction or issue to third parties in any form whatsoever is not permitted without written authority from the proprietor. Property of FCI. Copyright FCI.



RECOMMENDED PCB LAYOUT

|             |         |                |      |                                       |                        |            |  |                           |  |
|-------------|---------|----------------|------|---------------------------------------|------------------------|------------|--|---------------------------|--|
| mat'l code  |         | SEE NOTE 2     |      | tolerances unless otherwise specified |                        | CUSTOMER   |  | <br>www.fciconnect.com    |  |
| ltr         | ecn no. | dr             | date | linear                                | .XX±.01/0.X±0.3        | COPY       |  | title                     |  |
| F           |         |                |      |                                       | .XXX±.005/0.XX±0.13    | projection |  | 3P + 24S + 4P             |  |
|             |         |                |      | angles                                | .XXX±.0020/0.XXX±0.051 |            |  | RIGHT ANGLE SOLDER HEADER |  |
|             |         |                |      | dr                                    | 0°±2°                  | INCH/MM    |  | product family            |  |
|             |         |                |      | enrg                                  | J. SHAFFER 04-23-02    | scale      |  | PwrBlade                  |  |
|             |         |                |      | chr                                   | M. MOSTOLLER 04-23-02  | 1:1        |  | code                      |  |
|             |         |                |      | appd                                  | M. MOSTOLLER 04-23-02  | size       |  | 213                       |  |
| sheet index |         | revision sheet |      |                                       |                        | A          |  | 51939-014                 |  |
|             |         |                |      |                                       |                        | 3 of 4     |  |                           |  |

cage code 22526

Tous droits strictement reserves. Reproduction ou communication a des tiers interdite sous quelque forme que ce soit sans autorisation écrite du propriétaire. Propriete de c FCI. Droits de reproduction FCI.



All rights strictly reserved. Reproduction or issue to third parties in any form whatever is not permitted without written authority from the proprietor. Property of FCI. Copyright FCI.

PRODUCT NUMBER  
51939-014\_\_  
NOTE: ③

NOTES:

1. DIMENSIONS AND TOLERANCES ARE IN ACCORDANCE WITH ASME Y14.5M, 1994 UNLESS OTHERWISE SPECIFIED.

CONNECTOR NOTES:

2. HOUSING MATERIAL: UL 94 V-0 GLASS FILLED HIGH-TEMP THERMOPLASTIC  
POWER CONTACT MATERIAL: COPPER ALLOY  
SIGNAL PIN MATERIAL: COPPER ALLOY

△ 3. SEE ITEM 1 & 2 IN PRINT 10064183 FOR PLATING SPEC OF 51939-014 AND 51939-014LF RESPECTIVELY.

4. MANUFACTURER'S NAME, P/N, AND DATE CODE TO APPEAR ON THIS SURFACE.

5. PRODUCT SPECIFICATION GS-12-149.  
APPLICATION SPECIFICATION BUS-20-067.

PCB NOTES:

6. ALL HOLE DIAMETERS ARE FINISHED HOLE SIZE.

7. MOUNTING HOLES, WHERE APPLICABLE, ARE UNPLATED.

8.  $\varnothing .0453 \pm 0.0010$  [ $1.151 \pm 0.025$ ] DRILLED HOLES PLATED WITH  
 $0.0003$  [ $0.008$ ] MIN SnPb OVER  $.001$  [ $0.03$ ]  
TO  $.003$  [ $0.08$ ] Cu PLATING TO ACHIEVE  
 $\varnothing .040 \pm .003$  [ $1.02 \pm .07$ ] HOLE.

9. "DIM XXX" TO BE DETERMINED BY THE CUSTOMER.

10. CONNECTOR KEEP-OUT ZONE.

11. A △ SYMBOL WILL BE NEXT TO ANY DIMENSION, VIEW, OR NOTE WHICH HAS BEEN MODIFIED WITH THE CURRENT DRAWING REVISION.

|             |         |                |      |                                       |                       |          |  |                           |  |                    |  |
|-------------|---------|----------------|------|---------------------------------------|-----------------------|----------|--|---------------------------|--|--------------------|--|
| mat'l code  |         | SEE NOTE 2     |      | tolerances unless otherwise specified |                       | CUSTOMER |  | FCI                       |  | www.fciconnect.com |  |
| ltr         | ecn no. | dr             | date | linear                                | .XX±.01/0.X±0.3       | COPY     |  | projection                |  |                    |  |
| F           |         |                |      |                                       | .XXX±.005/0.XX±0.13   | INCH/MM  |  | title 3P + 24S + 4P       |  |                    |  |
|             |         |                |      | angles                                | .XXX±.002/0.XXX±0.051 | 1:1      |  | RIGHT ANGLE SOLDER HEADER |  |                    |  |
|             |         |                |      | dr                                    | 0°+2°                 | scale    |  | product family PwrBlade   |  | code 213           |  |
|             |         |                |      | engr                                  | J. SHAFFER 04-23-02   | A        |  | size dwg no               |  | sheet 4 of 4       |  |
|             |         |                |      | chr                                   | M. MOSTOLLER 04-23-02 | A        |  | 51939-014                 |  |                    |  |
|             |         |                |      | appd                                  | M. MOSTOLLER 04-23-02 |          |  |                           |  |                    |  |
| sheet index |         | revision sheet |      |                                       |                       |          |  |                           |  |                    |  |

cage code 22526

Pro/E