

NOTES:

1) MATERIALS:

HOUSING: GLASS FILLED LCP (LIQUID CRYSTAL POLYMER),
UL 94V-0, COLOR: BLACK.
MOLDED STICK: GLASS FILLED LCP (LIQUID CRYSTAL POLYMER),
UL 94V-0, COLOR: BLACK.
MALE TERMINAL: PHOSPHOR BRONZE
OUTER SHELL: DEEP DRAWN STEEL.

2) PLATING :

TERMINAL: .000030/(0.000762) MINIMUM GOLD IN SELECTIVE AREA;
.000100/(0.00254) MINIMUM TIN IN SELECTIVE AREA;
OVER NICKEL UNDERPLATE OVERALL.

OUTER SHELL: .000150/(0.00381) MINIMUM TIN
OVER .000050/(0.00127) MINIMUM NICKEL
OVER COPPER FLASH OVERALL (OPTIONAL).

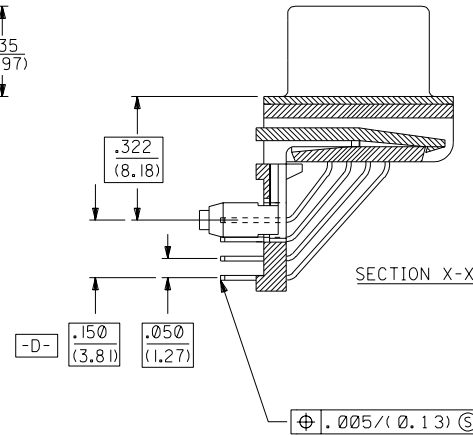
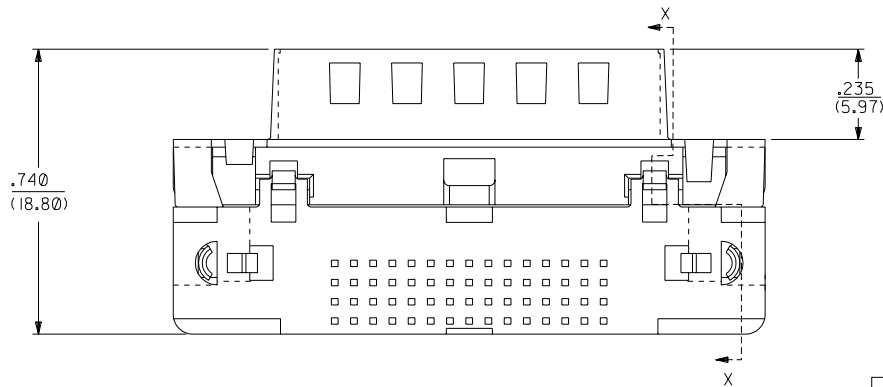
3) CONFORMS TO PRODUCT SPECIFICATION PS-70928.

4) PARTS TO BE PACKAGED IN TUBES.

5) THREAD GAUGE MAY REQUIRE UP TO 1 IN.-LB. OF TORQUE DURING GAUGING PROCESS.

NOTE FOR LEAD FREE CONVERSION:

THE PRIMARY SHIPPING CARTON WILL BE
LABELED "COMPLIANT TO ROHS DIRECTIVE
2002/95/EC AND ELV ANNEX II OF
DIRECTIVE 2000/53/EC". CARTONS
WITHOUT THIS LABEL MAY CONTAIN
PRODUCT WITH LEAD.



PART NUMBER	ENGINEERING NUMBER	DIM. 'A'
015-92-2250	70929-0001	.092±.012
015-92-2253	70929-0002	.104±.012

DIMENSIONS SHOWN (METRIC) INCH	
UNLESS OTHERWISE SPECIFIED TOLERANCES: ANGULAR ± 1/2°	
3 PLACE	± --- ---
2 PLACE	± --- ± ---
1 PLACE	--- ± ---

∇ = 0	▼ = 0	REVISE ONLY ON CAD SYSTEM
TITLE 0.050" PITCH LFH 60 CKT R/A D-SUB SALES ASSY. MALE		
MOLEX INCORPORATED LITSE, ILL. 60532	SHEET NO. 1 OF 2	DATE 12 / 17 / 90
PART NO. SDA-70929-0001	DRWG. NO.	

DRWG. BY MOS	CHK'D. BY CAB
APP'D. BY CAB	SCALE 4: 1

FILE NAME 570929X1.DGN	THIS DRAWING CONTAINS INFORMATION THAT IS PROPRIETARY TO MOLEX INC. AND SHOULD NOT BE USED WITHOUT WRITTEN PERMISSION
---------------------------	---

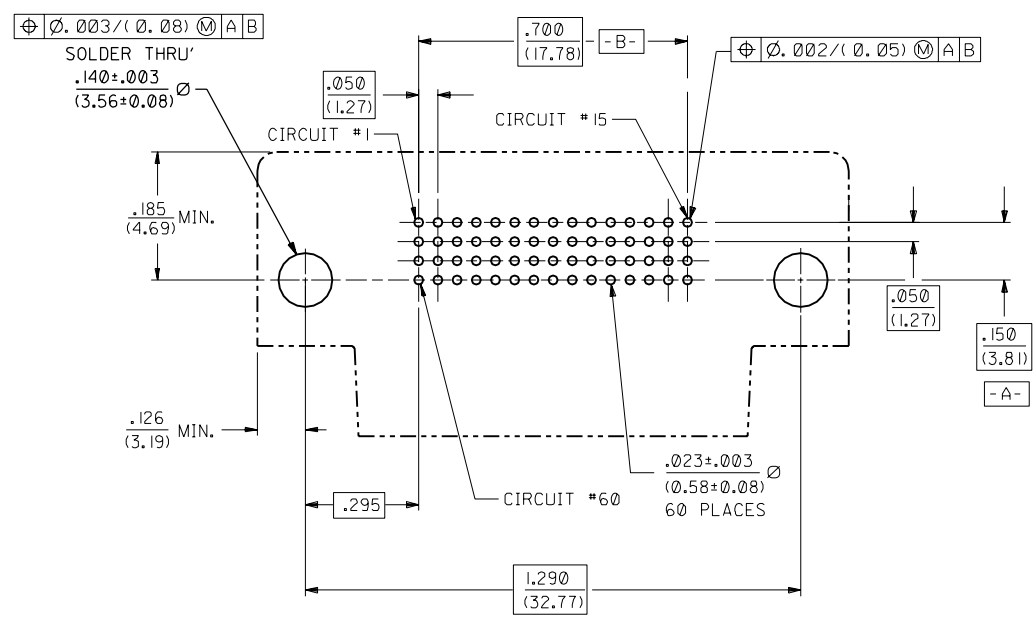
2	F1	MFG, SH.	REV.	LTR.	REVISIONS
1	G				

G	LEADFREE ECN# UCP2004-1998 DMORGAN 04/04/14
F1	REVISED PER ECN U8-1031 O'DELL 97/10/24
F	REVISED PER ECN U70417 SCHMIDG 96/11/08
E	REVISED PER ECN U6-1485 DRS 05/29/96
D1	REVISED PER ECN U6-1233 DRS 04/03/96
D	REVISED PER ECN U6-0641 DRS 12/01/95
C2	MODIFIED PER ECN U40503 DKS 4-15-94
C1	MODIFIED PER ECN U6-1051 DRS 07.15.92
C	MODIFIED PER ECN U2-0667 MOS 4.28.92
B	MODIFIED PER ECR U1-2081 MOS 10.29.91
A	RELEASED PER ECR U10958 MOS 5.16.91

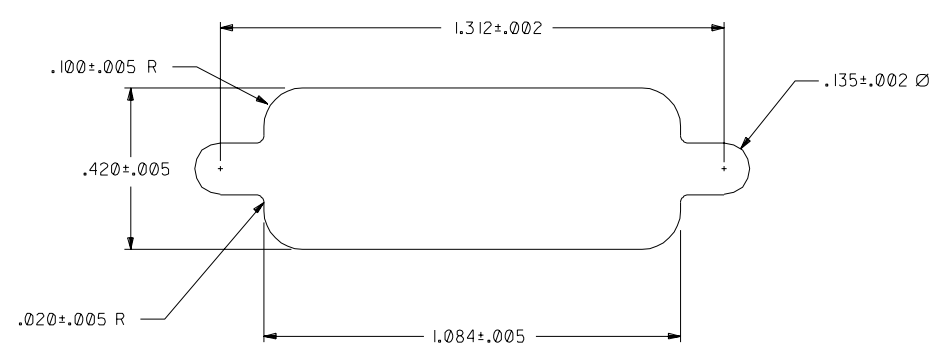
70929

B

A



RECOMMENDED P.C.B. LAYOUT
COMPONENT SIDE



RECOMMENDED PANEL CUT-OUT

F1	SEE SHEET I
E	SEE SHEET I

DIMENSIONS SHOWN (METRIC) INCH		▽ = 0		▼ = 0		REVISE ONLY ON CAD SYSTEM	
UNLESS OTHERWISE SPECIFIED TOLERANCES ANGULAR ± 1/2°							
3 PLACE ± --- ---		INCH		METRIC			
2 PLACE ± --- ± ---							
1 PLACE --- ± ---							
DRAFT WHERE APPLICABLE MUST REMAIN WITHIN DIMENSIONS							
DRAWN BY: MOS		CHK'D BY: CAB		PART NO. SEE SHEET 1		DRWG. NO. SDA-70929-0001	
APP'D BY: CAB		SCALE: 4: 1		FILE NAME: S70929X1A		SHEET NO. 2	
				DATE: 4/15/94		DIV. CD	
THIS DRAWING CONTAINS INFORMATION THAT IS PROPRIETARY TO MOLEX INC. AND SHOULD NOT BE USED WITHOUT WRITTEN PERMISSION.							