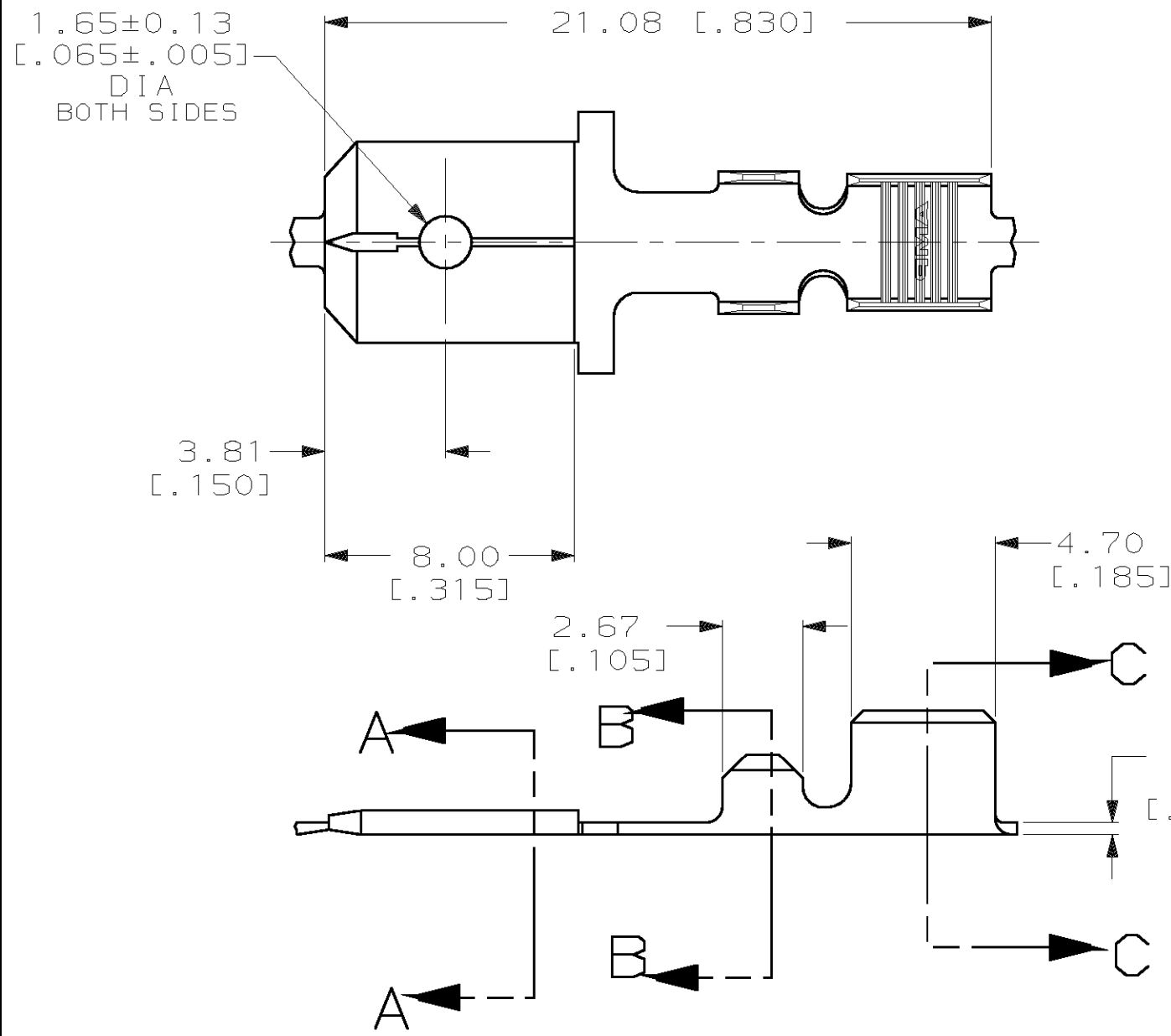
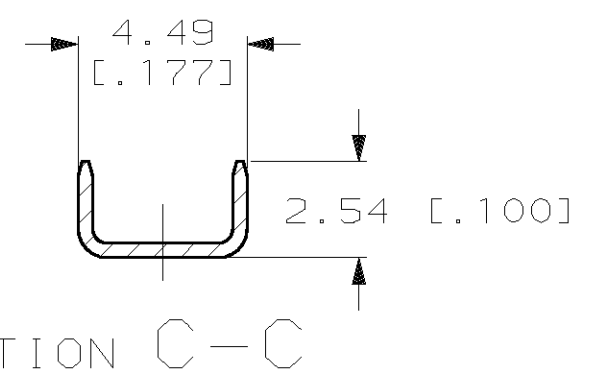
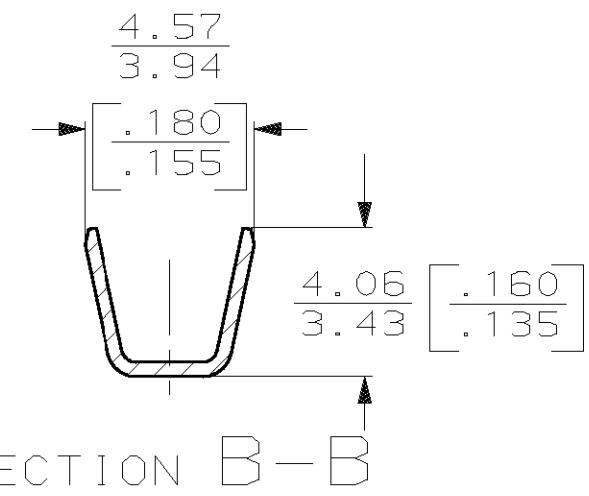
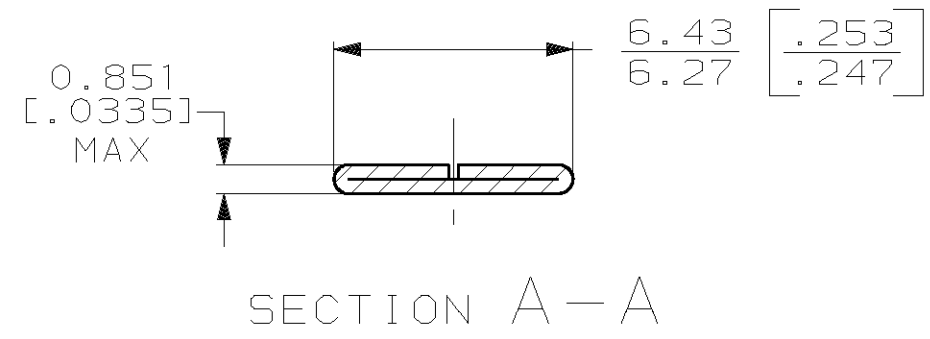


THIS DRAWING IS UNPUBLISHED. RELEASED FOR PUBLICATION, 19
 © COPYRIGHT 19 BY AMP INCORPORATED. ALL INTERNATIONAL RIGHTS RESERVED.

LOC	DIST	P	F	REVISIONS				
AF	50			ZONE	LTR	DESCRIPTION	DATE	APPD
					C	REV PER 063A-0146-99	9/9/99	JR/PD



- 1 CONTINUOUS STRIP ON REELS.
- 2 TIN PLATE 0.002032 [.000080] WITH VARNISH RESIST.



[14-12 (2) #16]	63657-1
WIRE SIZE	PART NO

DO NOT SCALE PRINT. UNLESS SPECIFIED DIMENSIONS IN mm [INCHES] TOLERANCES ON: 2 PLC DEC ± 0.25 [.010] 3 PLC DEC ± - ANGLES ± -	DR 8/11/92 JR RUTH
	CHK 8/11/92 MS FEHER
	APPD 8/11/92 C MEYERS
	APPD 8/11/92 D REINER
	PRODUCT SPEC -
MATERIAL 082 BRASS	APPLICATION SPEC -
FINISH 2	WEIGHT -

AMP AMP Incorporated Harrisburg, PA 17105-3608		
NAME TAB, AMPLIVAR, 6.35 [.250] SERIES		
SIZE B	CAGE CODE 00779	DRAWING NO C-63657
SCALE 5:1	SHEET 1 OF 1	

THIS DRAWING IS A CONTROLLED DOCUMENT FOR AMP INCORPORATED. IT IS SUBJECT TO CHANGE AND THE CONTROLLING ENGINEERING ORGANIZATION SHOULD BE CONTACTED FOR THE LATEST REVISION.