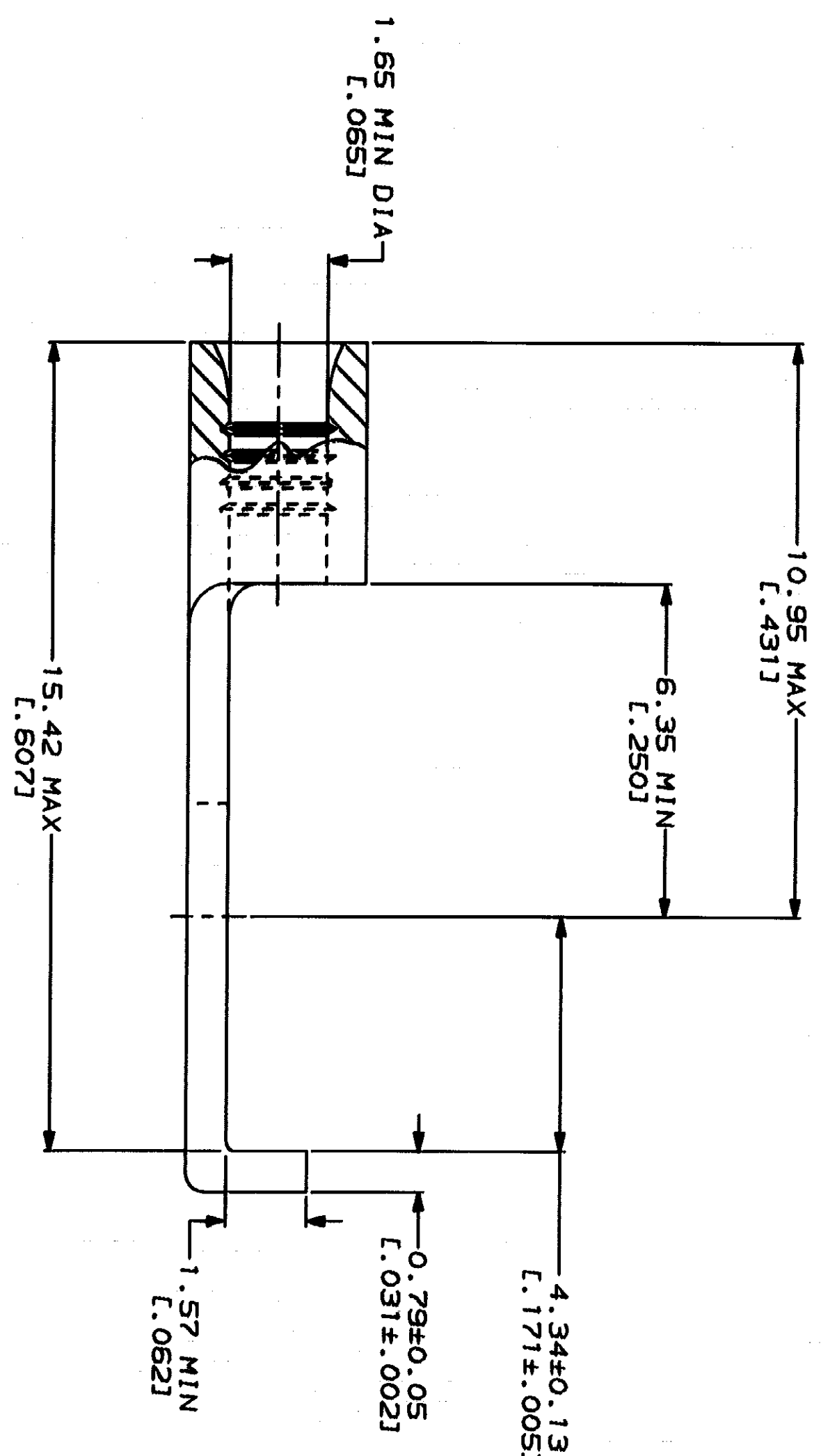


METPAC
DIMENSIONS LISTED IN mm [INCHES]

AMP WIRE RANGE 22-16 AWG STRAINED	UL E13288 Listed 22-16 AWG STRAINED
● LR7189 Certified	MILITARY P/N AND CLASS
NOT CERTIFIED	NOT APPLICABLE

⚠ STAMP AMP 22-18* APPROX AS SHOWN
22-16 TERMINALS ARE STAMPED 22-18 IN
ACCORDANCE WITH MILITARY SPECIFICATION
MIL-T-7928, COMMERCIAL WIRE RANGE IS 22-16



AMP INCORPORATED CUSTOMER SERVICE SYSTEMS		MAX RECOMMENDED OPERATING TEMPERATURE: 170°C MAX	
FOR ADDITIONAL PRODUCT INFORMATION OR COPIES OF DRAWINGS AND TECHNICAL DOCUMENTS	1-800-522-6752	VOLTAGE RATING: NOT APPLICABLE	WIRE CROSS SECTIONAL AREA RANGE: 0.26-1.65mm ² (509-3,260) CIR MILS STRAINED
FOR APPLICATION TOOLING INFORMATION	1-800-722-1111	DO NOT SCALE PRINT. UNLESS SPECIFIED DIMENSIONS IN—(INCHES)— TOLERANCES ON: 2 P.L.C. DEC ± 3 P.L.C. DEC ± ANGLES ± RATERIAL	
FOR ORDER ENTRY	1-800-526-5142	FINISH TIN PLATE 0.0025±L.000100J MIN TKR PER MIL-T-10727	DR 3-2-93 JA BRINKMAN CHK 3-2-93 DA PATTERSON APPD 3-2-93 DE MILLER APPD 3-2-93 JL NECKLEY PRODUCT SPEC

AMP INCORPORATED CUSTOMER SERVICE SYSTEMS		MAX RECOMMENDED OPERATING TEMPERATURE: 170°C MAX	
FOR ADDITIONAL PRODUCT INFORMATION OR COPIES OF DRAWINGS AND TECHNICAL DOCUMENTS	1-800-522-6752	VOLTAGE RATING: NOT APPLICABLE	WIRE CROSS SECTIONAL AREA RANGE: 0.26-1.65mm ² (509-3,260) CIR MILS STRAINED
FOR APPLICATION TOOLING INFORMATION	1-800-722-1111	FINISH TIN PLATE 0.0025±L.000100J MIN TKR PER MIL-T-10727	DR 3-2-93 JA BRINKMAN CHK 3-2-93 DA PATTERSON APPD 3-2-93 DE MILLER APPD 3-2-93 JL NECKLEY PRODUCT SPEC
FOR ORDER ENTRY	1-800-526-5142	APPLICATION SPEC	WEIGHT

AMP
TERMINAL, FLANGED
SPADE, BUDGET