

COUNT	DESCRIPTION OF REVISIONS	BY	CHKD	DATE	COUNT	DESCRIPTION OF REVISIONS	BY	CHKD	DATE
△					△				
△					△				

APPLICABLE STANDARD					
RATING	OPERATING TEMPERATURE RANGE	- 25 °C TO 60 °C			STORAGE TEMPERATURE RANGE
	VOLTAGE	TM	125 V AC		CURRENT
		PWJ	10.5 V DC		TM
				PWJ	2 A

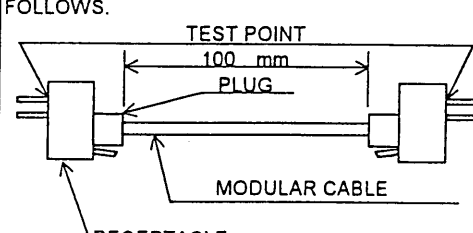
SPECIFICATIONS

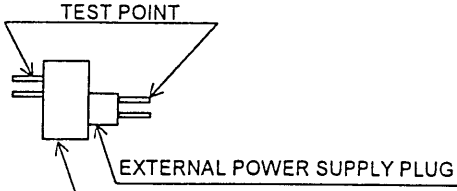
ITEM	TEST METHOD	REQUIREMENTS	QT	AT
------	-------------	--------------	----	----

CONSTRUCTION

GENERAL EXAMINATION	VISUALLY AND BY MEASURING INSTRUMENT.	ACCORDING TO DRAWING.	<input type="checkbox"/>	<input type="checkbox"/>
MARKING	CONFIRMED VISUALLY.		<input type="checkbox"/>	<input type="checkbox"/>

ELECTRIC CHARACTERISTICS

CONTACT RESISTANCE (TM)	100 mA (DC OR 1000 Hz AC). MEASUREMENT POINTS SHALL BE AS FOLLOWS.  RECEPTACLE (ONE EXAMPLE OF CONNECTOR CONFIGURATION IS SHOWN.)	200 mΩ MAX. FOR REFERENCE ONLY Subject to change without notice	<input type="checkbox"/>	-
-------------------------	---	---	--------------------------	---

CONTACT RESISTANCE (PWJ)	100 mA (DC OR 1000 Hz AC). MEASUREMENT POINTS SHALL BE AS FOLLOWS.  EXTERNAL POWER SUPPLY PLUG TM5RT-1204PWJ (ONE EXAMPLE OF CONNECTOR CONFIGURATION IS SHOWN.)	30 mΩ MAX.	<input type="checkbox"/>	-
--------------------------	--	------------	--------------------------	---

INSULATION RESISTANCE	100 V DC.	100 MΩ MIN.	<input type="checkbox"/>	-
VOLTAGE PROOF	500 V AC FOR 1 min.	NO FLASHOVER OR BREAKDOWN.	<input type="checkbox"/>	<input type="checkbox"/>

MECHANICAL CHARACTERISTICS

MECHANICAL OPERATION	200 TIMES INSERTIONS AND EXTRACTIONS.	① CONTACT RESISTANCE TM : 220 mΩ MAX. PWJ : 100 mΩ MAX. ② NO DAMAGE, CRACK AND LOOSENESS, OF PARTS.	<input type="checkbox"/>	-
CONTACT INSERTION AND EXTRACTION FORCES (PWJ)	OUTSIDE DIAMETER $\phi 4.8 \pm 0.06$ BY STEEL GAUGE. INSIDE DIAMETER $\phi 1.75 \pm 0.06$	INSERTION FORCE 20 N MAX. 5 N MIN. EXTRACTION FORCE 15 N MAX. 4 N MIN.	<input type="checkbox"/>	-

REMARKS

製図	追書	検図	査一図	承認	出図
技術 2.6.1 鈴木	2.6.1 鈴木	2.6.4 田中	2.6.4 田中	2.6.4 中沢	HRS 4.16.01 USA

Unless otherwise specified, refer to JIS C 5402.
Note QT:Qualification Test AT:Assurance Test O:Applicable Test

HRS HIROSE ELECTRIC CO., LTD.	SPECIFICATION SHEET	PART NO. TM5RT-1204PWJ
CODE NO.(OLD) CL	DRAWING NO. ELC4-043053	CODE NO. CL222-3536-0- 1/2

TC
Q

SPECIFICATIONS

ITEM	TEST METHOD	REQUIREMENTS	QT	AT
VIBRATION	FREQUENCY 10 TO 55 Hz, AMPLITUDE 1.5 mm, — m/s ² AT 2 h, FOR 3 DIRECTIONS.	① NO ELECTRICAL DISCONTINUITY OF — μs. ② CONTACT RESISTANCE	○	—
SHOCK	490 m/s ² DIRECTIONS OF PULSE 11 ms AT 3 TIMES FOR 3 DIRECTIONS.	TM: — mΩ MAX. PWJ: — mΩ MAX. ③ NO DAMAGE, CRACK AND LOOSENESS, OF PARTS.	○	—

ENVIRONMENTAL CHARACTERISTICS

DAMP HEAT (STEADY STATE)	EXPOSED AT 60 °C, 90 TO 95 %, 500 h.	① CONTACT RESISTANCE TM: — mΩ MAX. PWJ: — mΩ MAX. ② INSULATION RESISTANCE TM: 1 MΩ MIN. PWJ: — MΩ MIN. (AT HIGH HUMIDITY) ③ INSULATION RESISTANCE TM: 10 MΩ MIN. PWJ: — MΩ MIN. (AT DRY) ④ NO DAMAGE, CRACK AND LOOSENESS, OF PARTS.	○	—
RAPID CHANGE OF TEMPERATURE	TEMPERATURE —55±3 → 5 TO 35 → 85±2 → 5 TO 35 °C TIME 30 → 5 MAX → 30 → 5 MAX min UNDER 5 CYCLES.	① CONTACT RESISTANCE TM: — mΩ MAX. PWJ: — mΩ MAX. ② INSULATION RESISTANCE: — MΩ MIN. ③ NO DAMAGE, CRACK AND LOOSENESS, OF PARTS.	○	—
CORROSION SALT MIST	EXPOSED IN 5 % SALT WATER SPRAY FOR 48 h.	① CONTACT RESISTANCE TM: — mΩ MAX. PWJ: — mΩ MAX. ② NO DAMAGE, CRACK AND LOOSENESS,	○	—
DIP CONDITION	PREHEAT TEMPERATURE 90°C ~ 130°C SOLDER TEMPERATURE, 230±5 °C IMMERSION DURATION 3 ± 0.5 s.	NO DEFORMATION OF CASE AND EXCESSIVE LOOSENESS OF THE TERMINALS.	○	—
RESISTANCE TO SOLDERING HEAT	SOLDER TEMPERATURE, 260±5 °C FOR IMMERSION, DURATION, 5±1 s.	NO DEFORMATION IN APPEARANCE OR SOLDERLESS ON CONTACT SURFACE ETC.	○	—

[TM---- MODULAR JACK PORTION
PWJ----EXTERNAL POWER SUPPLY JACK PORTION]

FOR REFERENCE ONLY
Subject to change without notice

REMARKS

5/2/04 (高)

Unless otherwise specified, refer to JIS C 5402.

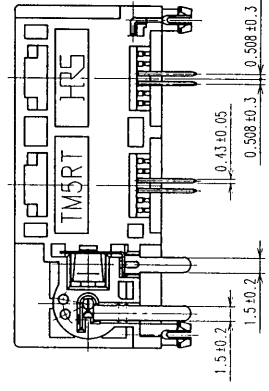
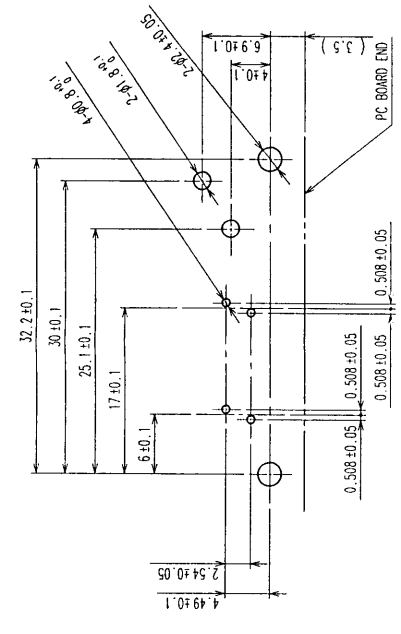
製 図	描 写	検 査	交 付	承認	出 図
技術 2.6.4 幹木	2.6.4	2.6.4 田中秀	2.5.4 三平秀	2.5.4 中沢	HRS 4.16.01 USA

Note QT:Qualification Test AT:Assurance Test ○:Applicable Test

HRS HIROSE ELECTRIC CO., LTD.	SPECIFICATION SHEET	PART NO. TM5 RT-1204PWJ	
CODE NO.(OLD) CL	DRAWING NO. ELC4-043053	CODE NO. CL222-3536-0-	2/2

COUNT	DESCRIPTION OF REVISIONS	BY	CHKD	DATE	COUNT	DESCRIPTION OF REVISIONS	BY	CHKD	DATE

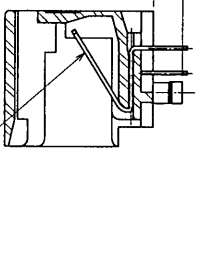
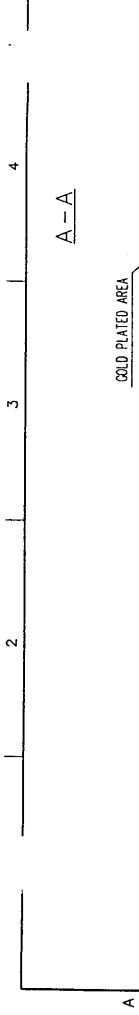
RECOMMENDED PC BOARD HOLE PATTERN MOUNTING SIDE (t=1.6)



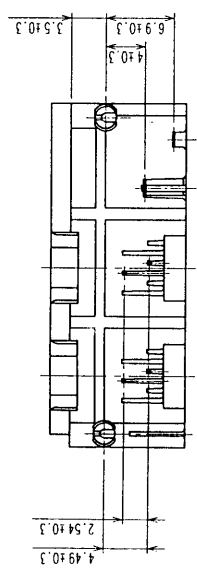
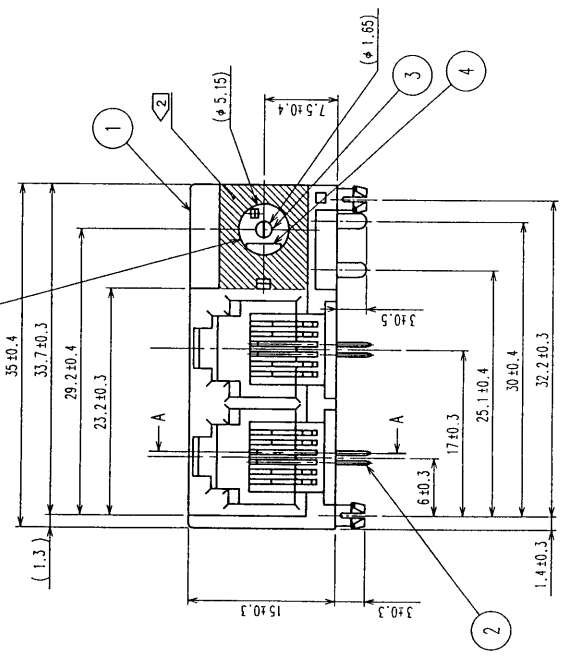
NOTES:

① APPLICABLE PLUG OF THE EXTERNAL POWER SUPPLY JACK PORTION IS IN ACCORDANCE WITH EIAJ RC-5320 VOLTAGE CLASSIFICATION 3.

② HATCHING AREA IS ROUGHLY FINISHED.



EXTERNAL POWER SUPPLY JACK PORTION



FOR REFERENCE ONLY
Subject to change without notice

NO.	MATERIAL	FINISH, REMARKS	NO.	MATERIAL	FINISH, REMARKS
2	PHOSPHOR BRONZE	SELECTIVE GOLD PLATING, 1.27µm, 0.125-0.150µm PLATING	4	COPPER ALLOY	SILVER PLATING
1	PBT	BLACK UL94V-0	3	COPPER ALLOY	SILVER PLATING

DESIGNED	CHECKED	APPROVED	RELEASED
J. Watanabe	J. Watanabe	H. Muro	7.8.92
12.2.7	12.2.7	99.9.7	99.9.7

DRAWING NO.	PART NO.
EDC3-045053-01	TMSRT-1204PWJ
SCALE	CODE NO.
2 : 1	CL222-3536-0
UNITS	
mm	

TO	
Q2	