

RECOMMENDED P.C.B. LAYOUT (T=1.6mm/2.0mm/2.4mm)

NOTES:

1. MATERIAL:

HOUSING: THERMAL PLASTIC, UL94V-0, COLOR: SEE SHEET2  
 TERMINAL/PEG: COPPER ALLOY, THICKNESS=0.25MM

2. TERMINAL PLATING:

- CONTACT AREA: (a) GOLD FLASH
- (b) 0.76 MICRON GOLD PLATED
- (c) 0.38 MICRON GOLD PLATED

SOLDER TAIL:

1.27 MICRON MIN. MATTE TIN PLATED

UNDER PLATE:

1.27 MICRON MIN. NICKEL PLATED

3. PEG PLATING:

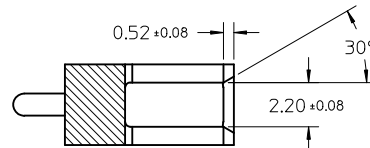
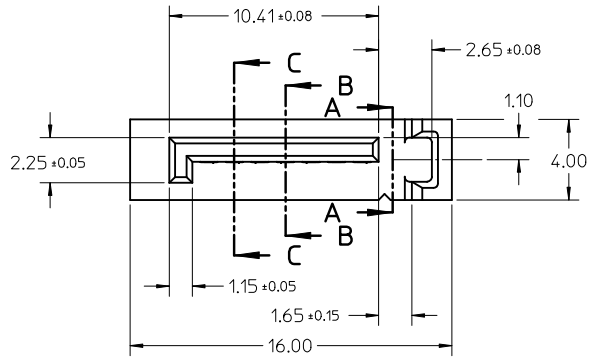
- 1.27 MICRON MIN. MATTE TIN PLATED OVERALL
- 1.27 MICRON MIN. NICKEL UNDER PLATED

4. PACKAGING SPECIFICATION REFER TO PK-67491-001

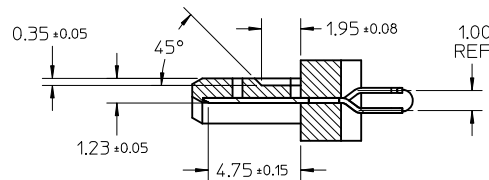
5. PRODUCT SPECIFICATION REFER TO PS-67491-001

6. MATING PART: 67489

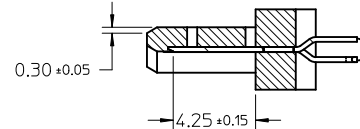
7. RECOMMENDED PROCESS: WAVE SOLDERING



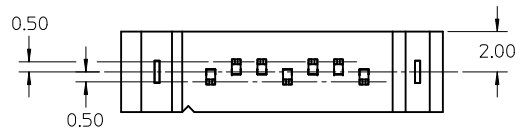
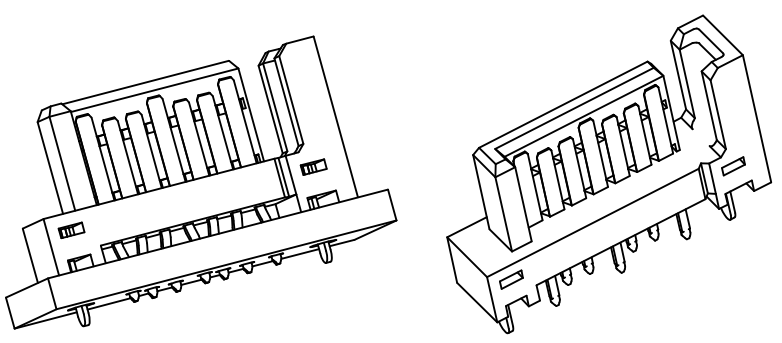
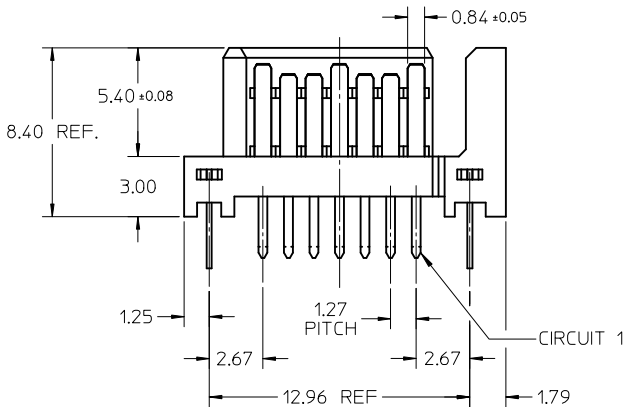
SECTION A-A



SECTION B-B



SECTION C-C



OBSOLETE PARTS EC NO: SH2012-0231 DRWG:GLL CHKD:XOZHANG APPR:AYIN 2012/01/17 2012/01/17 2012/01/20	QUALITY SYMBOLS	GENERAL TOLERANCES (UNLESS SPECIFIED)		DIMENSION STYLE MM ONLY		SCALE 4:1	DESIGN UNITS METRIC	THIRD ANGLE PROJECTION
	$F_A=0$	4 PLACES	mm	INCH	DRAWN BY GRATE MA	DATE 2004/02/02	TITLE 1.27MM HIGH SPEED PLUG VERTICAL TYPE	
	$F_B=0$	3 PLACES	± ---	± ---	CHECKED BY YAJUN	DATE 2004/02/02	MOLEX INCORPORATED	
	$F_C=0$	2 PLACES	± 0.15	± ---	APPROVED BY RZHANG	DATE 2010/11/03	DOCUMENT NO. SD-67491-001	SHEET NO. 1 OF 2
		1 PLACE	± 0.25	± ---	MATERIAL NO. SEE CHART IN SHEET 2		THIS DRAWING CONTAINS INFORMATION THAT IS PROPRIETARY TO MOLEX INCORPORATED AND SHOULD NOT BE USED WITHOUT WRITTEN PERMISSION	
		ANGULAR ± 3°		DRAFT WHERE APPLICABLE MUST REMAIN WITHIN DIMENSIONS				

	10	9	8	7	6	5	4	3	2	1
	P/N	PLATING TYPE	DIM "A"	DIM "B"	COLOR	SOLDE AREA PLATING				
F	67491-0020	SEE NOTE 2(a)	2.05	2.57	BLACK	PURE TIN MATTE FINISH				
	67491-0021	SEE NOTE 2(b)								
	67491-0022	SEE NOTE 2(c)								
	67491-0025	SEE NOTE 2(a)	2.35							
	67491-2020	SEE NOTE 2(a)	2.05							
	67491-2021	SEE NOTE 2(b)	2.05							
E	67491-2025	SEE NOTE 2(a)	2.35	3.20	BLACK					
	67491-2027	SEE NOTE 2(c)								
	67491-3010	SEE NOTE 2(a)								
	67491-3011	SEE NOTE 2(b)	3.00							
	67491-3012	SEE NOTE 2(c)	3.00							
	67491-3110	SEE NOTE 2(a)	3.00	3.20	BLUE, PANTONE NO. 293C ΔE<3					



<b>OBSOLETE PARTS</b> EC NO: SH2012-0231 DRWG:GLL CHKD:XOZHANG APPR:AYIN	2012/01/17 2012/01/17 2012/01/20	DESCRIPTION REV	QUALITY SYMBOLS	GENERAL TOLERANCES (UNLESS SPECIFIED)	DIMENSION STYLE	SCALE	DESIGN UNITS	THIRD ANGLE PROJECTION																		
			$\nabla_F = 0$ $\nabla_E = 0$ $\nabla_B = 0$	<table border="1"> <thead> <tr> <th></th> <th>mm</th> <th>INCH</th> </tr> </thead> <tbody> <tr> <td>4 PLACES</td> <td>± ---</td> <td>± ---</td> </tr> <tr> <td>3 PLACES</td> <td>± ---</td> <td>± ---</td> </tr> <tr> <td>2 PLACES</td> <td>± 0.15</td> <td>± ---</td> </tr> <tr> <td>1 PLACE</td> <td>± 0.25</td> <td>± ---</td> </tr> <tr> <td colspan="3">ANGULAR ± 3 °</td> </tr> </tbody> </table>		mm	INCH	4 PLACES	± ---	± ---	3 PLACES	± ---	± ---	2 PLACES	± 0.15	± ---	1 PLACE	± 0.25	± ---	ANGULAR ± 3 °			MM ONLY	4:1	METRIC	
				mm	INCH																					
			4 PLACES	± ---	± ---																					
3 PLACES	± ---	± ---																								
2 PLACES	± 0.15	± ---																								
1 PLACE	± 0.25	± ---																								
ANGULAR ± 3 °																										
	<table border="1"> <thead> <tr> <th></th> <th>DATE</th> </tr> </thead> <tbody> <tr> <td>DRAWN BY</td> <td>2004/02/02</td> </tr> <tr> <td>CHECKED BY</td> <td>DATE</td> </tr> <tr> <td>YA JUN</td> <td>2004/02/02</td> </tr> <tr> <td>APPROVED BY</td> <td>DATE</td> </tr> <tr> <td>RZHANG</td> <td>2010/11/03</td> </tr> </tbody> </table>		DATE	DRAWN BY	2004/02/02	CHECKED BY	DATE	YA JUN	2004/02/02	APPROVED BY	DATE	RZHANG	2010/11/03	<table border="1"> <thead> <tr> <th colspan="2">TITLE</th> </tr> </thead> <tbody> <tr> <td colspan="2">1.27MM HIGH SPEED PLUG VERTICAL TYPE</td> </tr> </tbody> </table>	TITLE		1.27MM HIGH SPEED PLUG VERTICAL TYPE									
	DATE																									
DRAWN BY	2004/02/02																									
CHECKED BY	DATE																									
YA JUN	2004/02/02																									
APPROVED BY	DATE																									
RZHANG	2010/11/03																									
TITLE																										
1.27MM HIGH SPEED PLUG VERTICAL TYPE																										
	<table border="1"> <thead> <tr> <th>MATERIAL NO.</th> <th>DOCUMENT NO.</th> <th>SHEET NO.</th> </tr> </thead> <tbody> <tr> <td>SEE CHART</td> <td>SD-67491-001</td> <td>2 OF 2</td> </tr> </tbody> </table>	MATERIAL NO.	DOCUMENT NO.	SHEET NO.	SEE CHART	SD-67491-001	2 OF 2	THIS DRAWING CONTAINS INFORMATION THAT IS PROPRIETARY TO MOLEX INCORPORATED AND SHOULD NOT BE USED WITHOUT WRITTEN PERMISSION																		
MATERIAL NO.	DOCUMENT NO.	SHEET NO.																								
SEE CHART	SD-67491-001	2 OF 2																								