

**Technical specification:**

Rated voltage: IEC 61076-2-101	30 V
Current rating: IEC 61076-2-101	2 A at 40°C
Insulation resistance: IEC 60512-2	>=100 MΩ
Pollution degree: IEC 60664-1	3/2
Degree of protection: IEC 60529	IP 67, in mated condition
Temperature range:	-30°C ... +85°C
Mating cycles: IEC 60512-9a	>=100
Wire cross section:	AWG20 / max. 0,5 mm <sup>2</sup>

**Materials:**

Contact:	CuZn
Contact plating:	Nickel, gold plated
Contact carrier:	PA6, UL 94
Contact screw:	Steel, zinc plated
Cable sealing:	Elastomere
O-Ring:	NBR
Coupling screw:	GD-Zn, nickel plated
Housing:	PA6 GF, UL 94

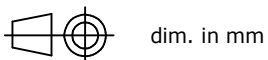
**Installation specification:**

Recommended torque:	0,6 Nm
Conec installation tooling:	Torque wrench: 36-000200 Insert across flats 18: 36-000240

Part no:	Description:	Cable-Ø:
43-00132	SAL - 12 - RSC8 - S	4 - 8 mm

DO NOT ALTER CAD DRAWING BY HAND

Directive 2002/95/EC RoHS compliant



	date	name
drawn	16.10.13	Mankopf
appd.	16.10.13	Franz

general tolerance:	0 ± 0,50mm
	0,0 ± 0,25mm
	0,00 ± 0,10mm



THIS DRAWING MAY NOT BE COPIED OR REPRODUCED IN ANY WAY, AND MAY NOT BE PASSED ON TO A THIRD PARTY WITHOUT WRITTEN PERMISSION. OWNERSHIP AND COPYRIGHT OF CONEC GmbH

title: Male connector M12x1, 8pos, field attachable, axial, with screw connection

dwg no: 43K1A2194

part no: see table