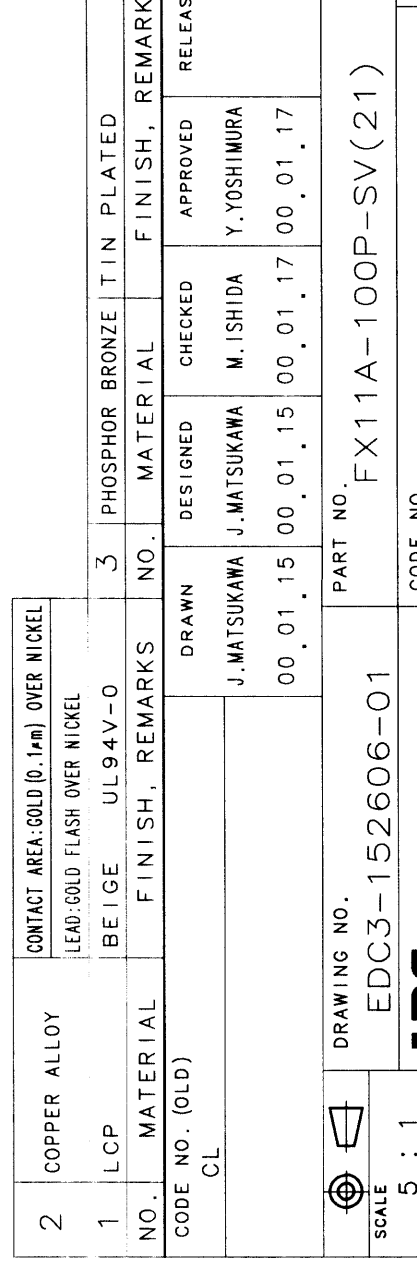
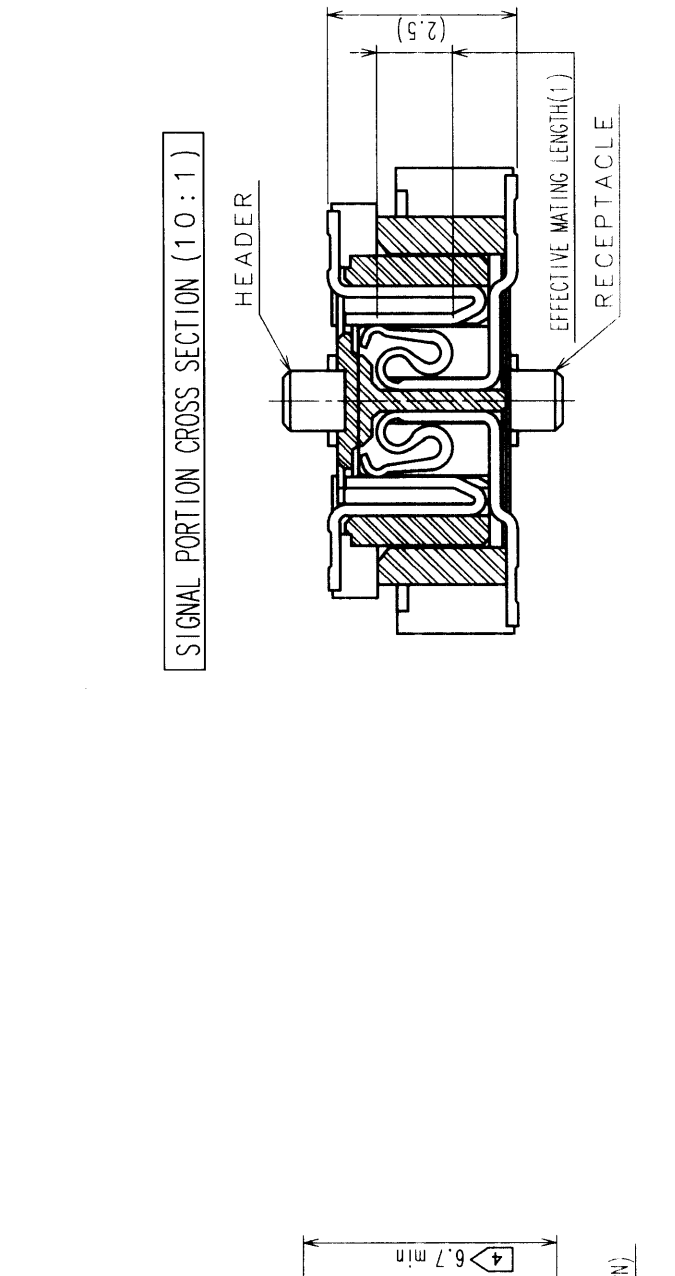
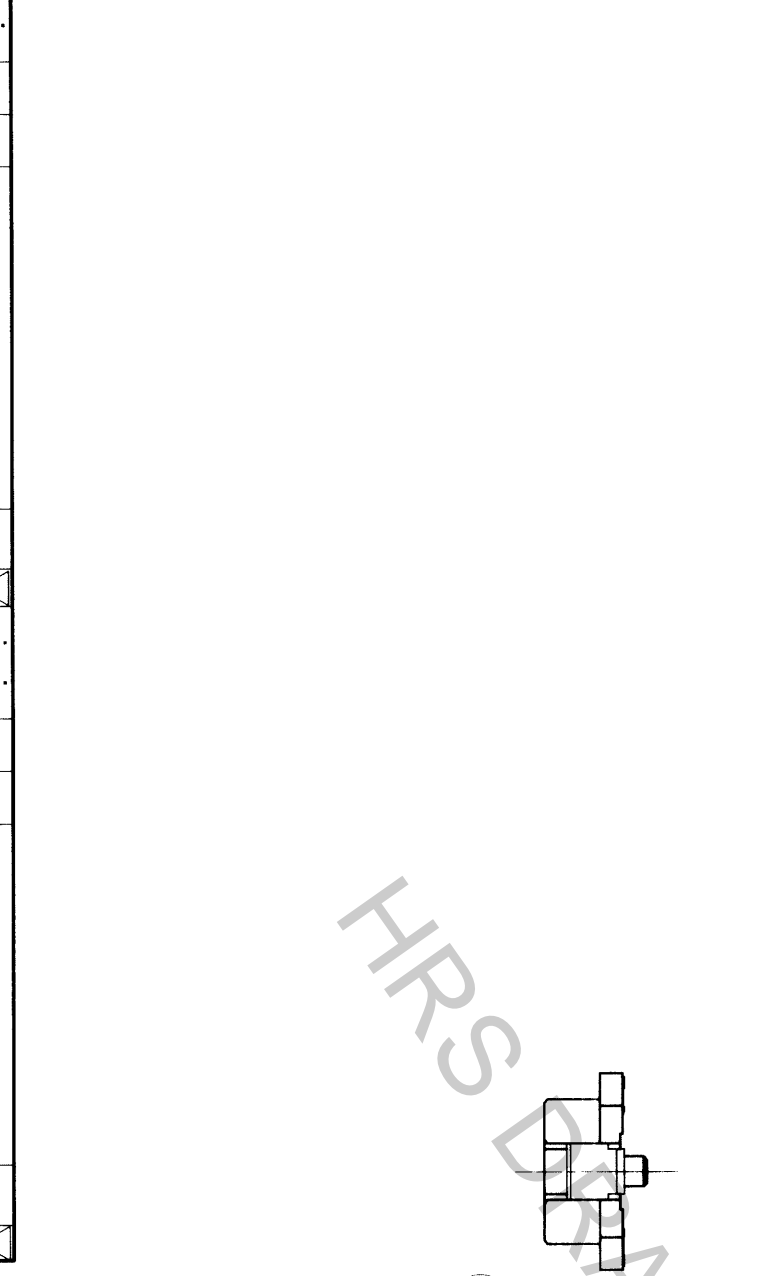


COUNT	DESCRIPTION OF REVISIONS	BY	CHKD	DATE	COUNT	DESCRIPTION OF REVISIONS	BY	CHKD	DATE
1	RE-F-06821	J.M.H.D		00.04.06					



RECOMMENDED LAND PATTERN DIMENSION OF PCB

- NOTES
- 1 SMT LEAD-COPLANARITY: 0.1 MAX.
 - 2 THIS PRODUCT HAS NO POLARITY TO PATTERN FOR MOUNTING.
 - 3 MAKE SURE WIDTH OF PATTERN IS WITHIN THAT OF LAND ,OR LEAD MAY TOUCH PATTERN. (THIS APPLIES TO HATCHED AREA.)
 - 4 DO NOT MOUNT OTHER DEVICES ONTO [] AREA ,OR MATING PAIR CANNOT BE MATED.
 - 5 TO BE EMBOSSED CARRIER TAPED AS SPECIFIED IN SHEET 2.

2	COPPER ALLOY	CONTACT AREA: GOLD (0.1μm) OVER NICKEL			
1	LCP	LEAD: GOLD FLASH OVER NICKEL			
		BEIGE	UL94V-0		
NO.	MATERIAL	FINISH, REMARKS	NO.	MATERIAL	FINISH, REMARKS
			3	PHOSPHOR BRONZE	TIN PLATED
CODE NO. (OLD)		DRAWN		DESIGNED	
CL		J.MATSUKAWA		M. ISHIDA	
		00.01.15		00.01.17	
		00.01.15		00.01.17	
		00.01.15		00.01.17	
		00.01.15		00.01.17	

DRAWING NO. EDC3-152606-01

PART NO. FX11A-100P-SV(21)

SCALE 5 : 1

UNITS mm

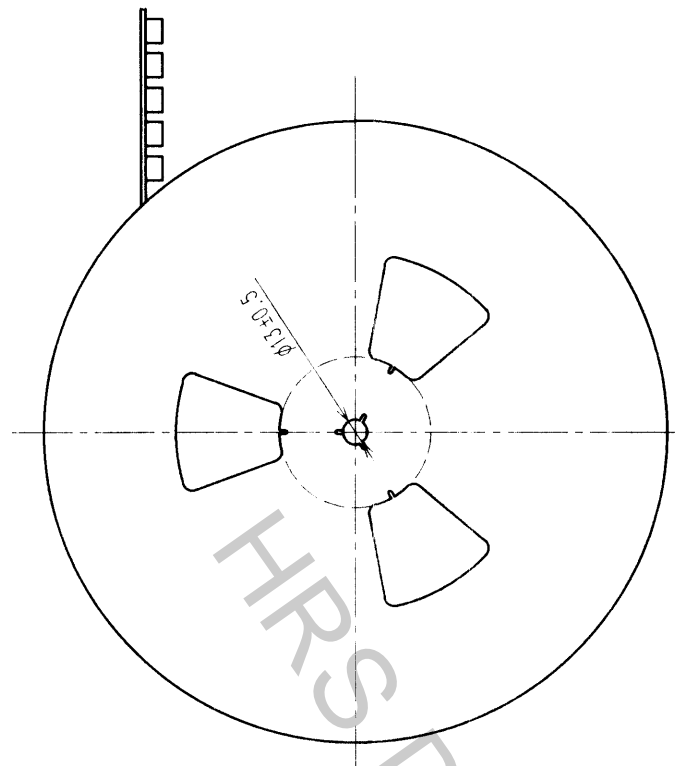
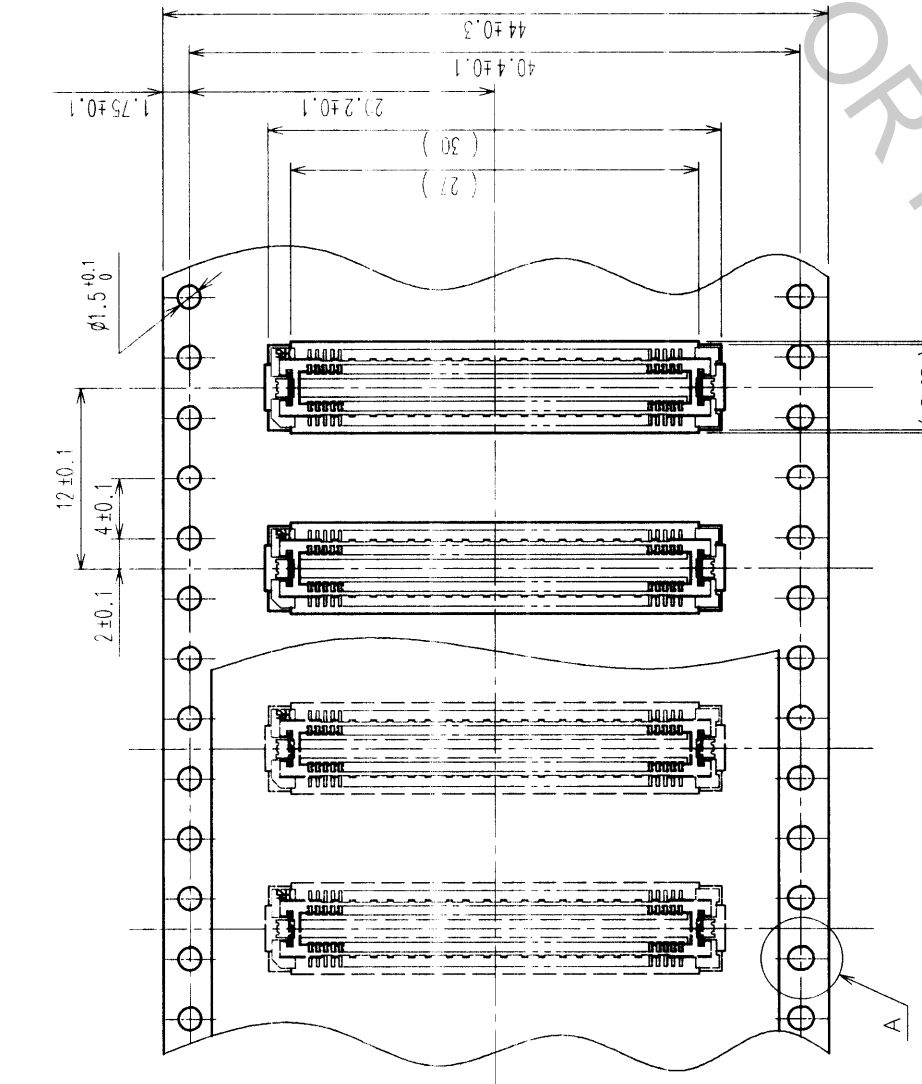
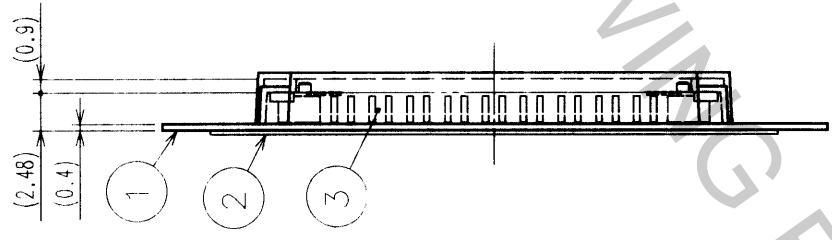
	APPROVED	RELEASED
	J. MATSUKAWA	Y. YOSHIMURA
	00.01.15	00.01.17

CODE NO.	CL573-0543-7-21
PART NO.	FX11A-100P-SV(21)
UNITS	mm
SCALE	5 : 1
DRAWING NO.	EDC3-152606-01
PART NO.	FX11A-100P-SV(21)
CODE NO.	CL573-0543-7-21
FORM NO.	NO. 229

TO	
PCK	

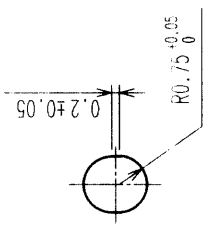
COUNT	DESCRIPTION OF REVISIONS	BY	CHKD	DATE	COUNT	DESCRIPTION OF REVISIONS	BY	CHKD	DATE
△					△				
△					△				
△					△				

REELED DIMENSION (FREE)



THE DIRECTION OF PULLING OUT →

A (5 : 1)



- NOTES
- 1 REEL: 1000 CONNECTORS.
 - 2 MINIMUM 10 COMPARTMENTS FROM BOTH REEL ENDS REMAIN EMPTY.
 - 3 THIS PRODUCT HAS NO POLARITY TO TAPE AND REEL PACKAGING.

2	PET	TOP COVER TAPE	3 (CONNECTOR)			FINISH, REMARKS			
1	PS	EMBOSSED CARRIER TAPE							
NO.	MATERIAL	FINISH, REMARKS	NO.	MATERIAL	NO.	DESIGNED	CHECKED	APPROVED	RELEASED
CODE NO. (OLD)	CL		DRAWN	J. MATSUKAWA	00.01.15	J. MATSUKAWA	M. ISHIDA	Y. YOSHIMURA	
DRAWING FOR PACKING									
DRAWING NO.		EDC3-152606-01	PART NO.		FX11A-100P-SV(21)				
SCALE	2 : 1		CODE NO.		CL573-0543-7-21				
UNITS	MM		HIROSE ELECTRIC CO., LTD						

TO	
PCK	