

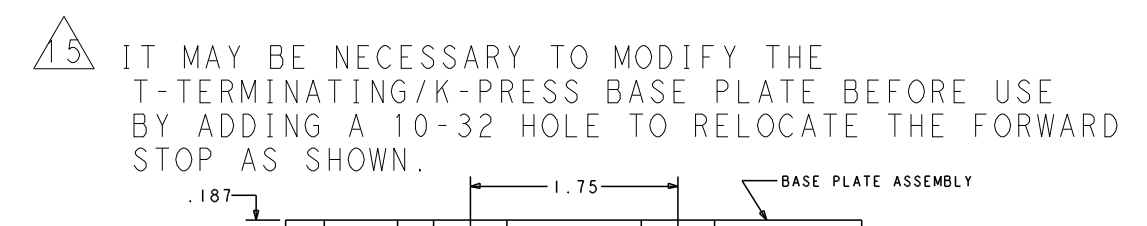
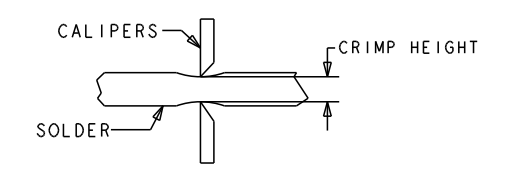
ATLANTIC VERSION TERMINATOR INTERFACE ADAPTER	PART NUMBER	REVISION	DESCRIPTION	FEED TYPE	APPLICATOR STYLE CONVERSION CHART					
					CONVERT TO	PART NUMBERS REQUIRED				
	2151029-2	C	FINE CRIMP HEIGHT ADJUST	PNEUMATIC	-	-	-	-	-	-
	2151029-5	C	FINE CRIMP HEIGHT ADJUST	SERVO LATCH PLATE ⁴	SERVO LATCH PLATE SMART APPLICATOR	2119951-1 2161326-1	2161540-1	8-2151029-5 8-2151029-4	1901094-3	1976043-1 2168400-6 (QUANTITY 2)
	2151029-6	C	NON-CRIMP HEIGHT ADJUST	SERVO LATCH PLATE ⁴	PNEUMATIC FEED	2119950-1	-	-	2119641-1	2119799-1 2063440-2
	2151029-7	C	FINE CRIMP HEIGHT ADJUST	NONE	-	-	-	-	-	-
7-2151029-7	A		CRIMP TOOLING KIT	-	-	-	-	-	-	-

APPLICATOR DATA		
CRIMP WIRE	SIZE	TYPE
	.278 [7.06 mm]	D
INSUL	-	-
APPLICATOR INSTRUCTIONS 408-10389		

TERMINAL DATA: TE TERMINAL		TE CRIMP SPECIFICATION	
TERMINAL NAME: FULLY INSULATED FASTON			
WIRE STRIP LENGTH		INSULATION DIAMETER RANGE	
.296-.328 IN [7.52-8.33 mm]		∅ .320 MAX	
TERMINAL APPLICATION SPECIFICATION	114-2123 ⁸		
TERMINALS APPLIED			
TE TERMINAL	TE TERMINAL	TE TERMINAL	TE TERMINAL
4-520447-2	9-520447-2	4-521097-2	

WIRE SIZE	CRIMP HEIGHT INCH [mm]	CRIMP HEIGHT REFERENCE SETTING	∅ SOLDER
10 ⁹	0.100+/-0.002 [2.54+/-0.05]	5.1	.25 IN [6.35mm]
12 OR (4)18	0.095+/-0.002 [2.41+/-0.05]	6.3	.25 IN [6.35mm]

- ¹ RECOMMENDED SPARE PARTS
- ² GREASE BEARING SURFACES LIGHTLY
- 3. LUBRICATE DAILY PER THE APPLICATOR INSTRUCTION SHEET SUPPLIED WITH THE APPLICATOR.
- ⁴ APPLICATOR SPECIFIC DATA TO BE ENTERED INTO BLANK MEMORY CHIP AT ASSEMBLY. SEE BELOW FOR PART NUMBER:
 PNEUMATIC FEED WITH "SMART APPLICATOR" CONVERSION: 8-2151029-4
 SERVO FEED WITH "FINE CRIMP HEIGHT ADJUST": 8-2151029-5
 SERVO FEED WITH "NON-CRIMP HEIGHT ADJUST": 8-2151029-6
- 5. ADJUSTMENT OF THE STRIPPER MAY BE REQUIRED WHEN MOVING THE APPLICATOR BETWEEN BENCH AND LEADMAKER APPLICATIONS.
- ⁶ GREASE THREADS, GROOVE AND O-RING ON ITEMS 35 & 252.
- ⁷ MAGNET, ITEM 166 MUST BE ORIENTED CORRECTLY IN ORDER TO PROPERLY ACTUATE THE COUNTER.
- ⁸ CRIMP HEIGHT REFERENCE SETTING WAS THE SETTING USED WHEN THE APPLICATOR WAS QUALIFIED AT THE FACTORY. ADJUSTMENT MAY BE NECESSARY WHEN RUNNING APPLICATOR IN THE FIELD.
- ⁹ TO CONVERT THE APPLICATOR TO A NON-CARRIER CUTTING STYLE, REMOVE ITEM 13 AND ATTACH TO THE LOCATION ON THE BACK SIDE OF THE HOUSING. REFER TO INSTRUCTION SHEET FOR ADDITIONAL INFORMATION.
- ¹⁰ WHEN ASSEMBLING -6 NON-CRIMP HEIGHT ADJUST APPLICATOR USE SHIM PACK 2119957-2 TO ALIGN APPLICATOR'S MAXIMUM WIRE CRIMP HEIGHT AT NORMAL TERMINATOR SHUT HEIGHT
- ¹¹ ITEM 7 MUST BE REMOVED IF APPLICATOR IS USED ON BENCH MACHINE.
- ¹² ITEM 5 AND 9 ARE REQUIRED WHEN RUNNING ON A LEADMAKER. ITEM 42 REQUIRED WHEN RUNNING ON A BENCH MACHINE.
- ¹³ FEED ADJUSTMENT MAY BE REQUIRED WHEN SWITCHING TERMINALS.
- ¹⁴ TO CHECK CRIMP HEIGHT, CRIMP SOLDER (∅.25 IN [6.35mm] 60/40 SOLID CORE) AND MEASURE AT CENTER OF SLUG.



- ¹⁵ IT MAY BE NECESSARY TO MODIFY THE T-TERMINATING/K-PRESS BASE PLATE BEFORE USE BY ADDING A 10-32 HOLE TO RELOCATE THE FORWARD STOP AS SHOWN.
- ¹⁶ ITEMS 253 AND 255 MUST BE INSTALLED IN THE G-TERMINATING UNIT CHIP RELIEF HOLE BEFORE INSTALLING THE APPLICATOR.
- ¹⁷ ITEM 257, REQUIRED IF APPLICATOR IS RUN ON T-TERMINATING UNIT/K-PRESS. GUARD, ITEM 256, REQUIRED IF APPLICATOR IS BEING USED ON G-TERMINATOR.
- ¹⁸ TERMINAL PITCH NOT COMPATIBLE WITH MECHANICAL FEED.
- ¹⁹ CONSULT PRODUCT ENGINEERING BEFORE USING 10AWG WIRE
- ²⁰ RECOMMENDED CRIMP HEIGHT FOR (1)12AWG+(1)18AWG IS .095±.002
- ²¹ APPLY PART NUMBER 1-23419-5 LOCTITE TO THREADS OF ITEM 62. FOR -6 ONLY APPLY PART NUMBER 1-23419-5 LOCTITE TO THREADS OF ITEM 37.
- ²² ITEMS NOT SHOWN.
- ²³ ITEM 261 REQUIRED WHEN APPLICATOR IS REMOVED FROM LEADMAKER AND PLACED IN AMP-O-LECTRIC* TERMINATING UNIT.

²²	-	-	-	-	1	1-18023-1	SCR, SHC, M4x10	262
²³	-	-	-	-	1	803931-1	BRACKET, HOLD DOWN	261
²²	-	-	-	-	1	2119957-2	APPLICATOR SHIM PACK	260
²²	-	REF	REF	REF	REF	462992-5	GUARD ASSY	257
²²	-	REF	REF	REF	REF	679532-1	INSERT, GUARD	256
²²	-	1	1	1	1	189728-1	BRACKET, SPACER	255
²²	-	1	1	1	1	568681-1	SPACER, BASE PLATE	253
²²	-	1	-	1	1	8-21084-0	O-RING, .676 ID, .070 DIA. MAT.	252
²²	-	-	-	-	1	2119640-1	PUSH ROD, AIR FEED	250
²²	-	-	-	-	1	2079988-1	BUSHING, LCH5-12, MISUMI	249
²²	-	-	-	-	1	2119641-1	FEED CAM, AIR FEED	248
²²	-	1	-	1	1	2119798-1	DETENT PIN	247
	-77	-7	-6	-5	-2	PART NO	DESCRIPTION	ITEM NO

ATLANTIC VERSION
 Shown on sheets 1 of 4 & 2 of 4
 (Pacific version shown on sheets 3 of 4 & 4 of 4)

SET UP GAUGE	LOC	DIST	REVISIONS					
2119599-1	A	66	P	LTN	DESCRIPTION	DATE	OWN	APVD
			A		RELEASED	120CT2012	LG	MC
			B		ECR-13-010223	25JUN2013	CC	TE
			C		ECR-17-005118	13APR2017	TB	GB

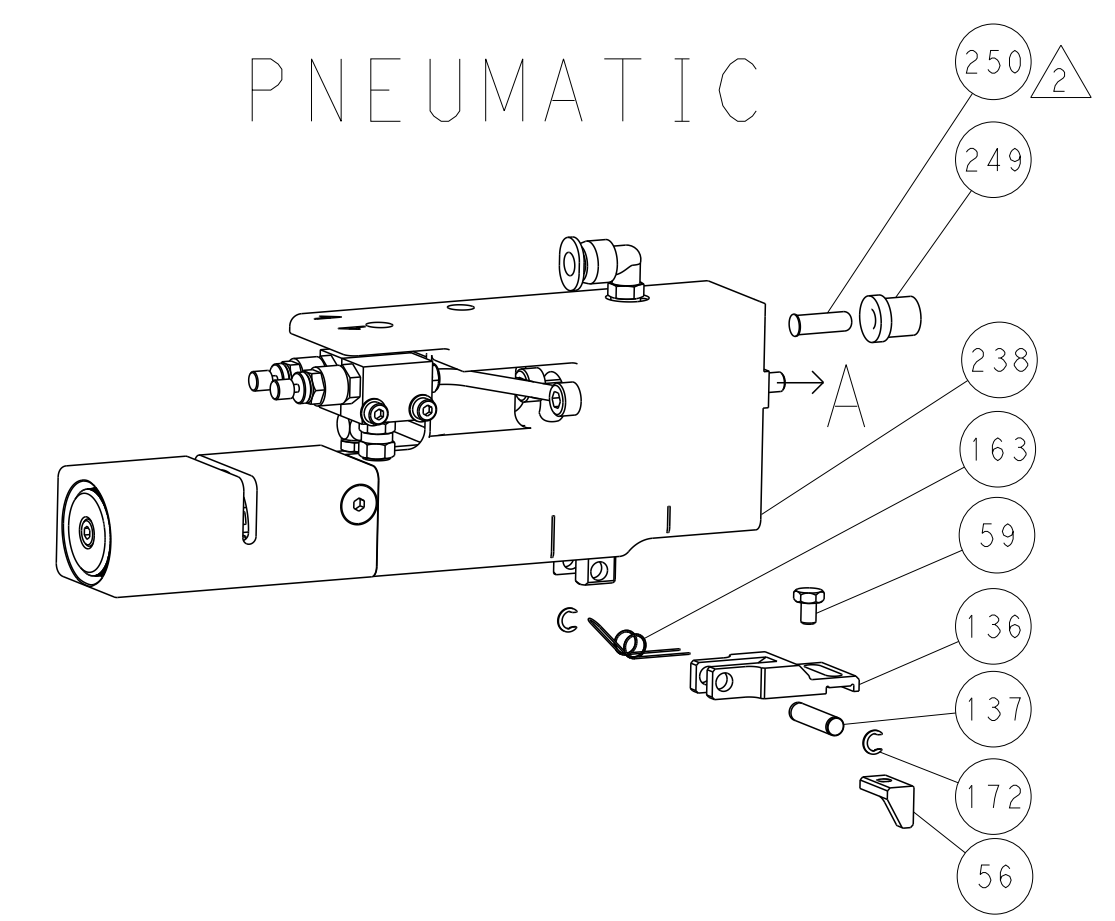
-	1	-	1	1	1	1-22279-3	SPRING, COMPRESSION	246
-	-	1	-	-	-	2119758-1	RAM, AMP STYLE, SIDE FEED, NON-ADJ.	245
-	1	1	1	1	1	7-18023-7	SCR, SKT HD CAP M3 X 4.0	241
-	-	2	2	-	-	2168400-6	SHCS, LOW HEAD, RoHS, M5 X 16	240
-	-	-	-	-	-	2119580-1	MECHANICAL FEED ASSEMBLY	239
-	-	-	-	-	1	2063440-1	AIR FEED MODULE	238
-	-	1	1	-	-	2119740-2	TAG, IDENTIFICATION	213
-	-	1	1	-	-	1901094-3	SPACER, FEEDER	198
-	-	-	-	2	-	21045-3	RING, RETAIN, EXTERN, 3/16 CRESCENT	172
-	1	1	1	1	1	994969-1	MAGNET, RARE EARTH HIGH ENERGY	166
-	REF	REF	REF	REF	REF	994970-2	COUNTER, MAGNETIC	164
-	-	-	-	-	1	240638-1	SPRING, FEED FINGER	163
-	-	-	-	-	1	3-23627-7	PIN, RETAIN, GRVD, 3/16 X .854	137
-	-	-	-	-	1	2119799-1	HOLDER, FEED FINGER, AF	136
⁴	-	-	REF	REF	-	SEE NOTE 4	MEMORY CHIP, PROGRAMMED	135
-	-	1	1	-	-	1633743-1	SERVO FEED LATCH ASM	133
-	1	1	1	1	1	1-22281-8	SPRING, COMPRESSION	121
-	1	1	1	1	1	1-690438-0	FRONT STRIP GUIDE	96
-	6	6	6	6	6	2168083-1	SCR, SKT HD CAP, RoHS, M3 X 8.0	95
-	1	1	1	1	1	2168083-6	SCR, SKT HD CAP, RoHS, M5 X 65	93
-	1	1	1	1	1	455888-4	SPACER, CRIMPER	82
-	1	1	1	1	1	240641-6	SPACER	81
-	1	1	1	1	1	2119956-1	DOCUMENTATION PACKAGE	71
-	1	1	1	1	1	2161332-2	DEPRESSOR, WIRE FUNNEL	70
-	1	1	1	1	1	2161331-1	SPACER, WIRE FUNNEL DEPRESSOR	69
-	2	2	2	2	2	1-18028-4	WASHER, FLAT, REG M3	68
-	1	-	-	-	1	2119740-1	TAG, IDENTIFICATION	67
-	2	2	2	2	2	2168078-1	SCREW, DRIVE, RH, RoHS, 2 x .188	66
-	1	-	1	1	1	2119793-1	LIMITER, ADJUSTMENT BOLT	63
²¹	-	3	-	3	3	992763-5	SCR, SET, SOC, CONE POINT, M3 x 4.0	62
-	2	2	2	2	2	2-18032-5	SCR, SET, FLT POINT M5 X 20.0	61
-	1	1	1	1	1	2079383-4	SCR, BHSC, RoHS (M4 X 8)	60
-	-	-	-	-	1	5-18022-5	SCR, HEX HD CAP, M4 X 6.0	59
-	-	-	-	-	1	462427-2	FINGER, FEED	56
-	4	4	4	4	4	2168400-1	SHCS, LOW HEAD, RoHS, M4 X 12	54
-	2	2	2	2	2	2168083-9	SCR, SKT HD CAP, RoHS, M4 X 20	53
-	-	-	-	-	1	18023-9	SCR, SKT HD CAP M4 X 6.0	49
-	1	1	1	1	1	1-2119656-9	APPLICATOR BASIC ASSEMBLY, SF	46
-	1	-	1	1	1	2119370-1	RAM, AMP STYLE, SIDE FEED	44
²²	-	1	1	1	1	462433-8	SUPPORT, INSULATION	42
-	1	1	1	1	1	2079383-7	SCR, BHSC, RoHS (M8 X 25)	41
-	1	-	1	1	1	2119645-1	DISC, NUMBERED FA WIRE ADJUSTMENT	40
-	1	-	1	1	1	2119957-1	APPLICATOR SHIM PACK	39
-	1	1	1	1	1	2119644-1	RAM WASHER, PRECISION	38
²¹	-	1	1	1	1	2119085-1	FA HEAD, ATLANTIC STYLE	37
⁶	-	1	-	1	1	2119092-1	BOLT, ADJUSTMENT	35
-	2	2	2	2	2	5-22278-1	SPRING, COMPRESSION	33
-	1	1	1	1	1	2161328-1	HEX HEAD, FLANGED, M5 X 8mm LONG	32
-	2	2	2	2	2	1-2168083-4	SCR, SKT HD CAP, RoHS, M4 X 5	30
-	1	1	1	1	1	2161336-1	PLATE, REAR STRIP GUIDE	29
-	2	2	2	2	2	22281-9	SPRING, COMPRESSION	27
-	1	1	1	1	1	356835-1	LEVER, DRAG RELEASE	26
-	1	1	1	1	1	240792-1	DRAG, TERMINAL	25
-	1	1	1	1	1	684042-5	GUIDE, STRIP, FRONT	24
-	1	1	1	1	1	980371-4	SCR, SKT HD SHLDR 5.0 DIA X 6.0	23
-	1	1	1	1	1	2168083-2	SCR, SKT HD CAP, RoHS, M4 X 8.0	21
-	1	1	1	1	1	1-18028-2	WASHER, FLAT, REG M4	20
-	1	1	1	1	1	2119533-1	STRIPPER, SIDE FEED	19
-	1	1	1	1	1	463460-3	HOLD DOWN, TERMINAL	18
¹	-	1	1	1	1	469542-3	REAR FLOATING SHEAR	17
¹	-	2	2	2	2	1-2168083-1	SCR, SKT HD CAP, RoHS, M3 X 6	16
¹	-	1	1	1	1	2161335-2	SHEAR PLATE, REAR	15
-	1	1	1	1	1	2119862-2	SHEAR HOLDER, REAR	14
¹	-	1	1	1	1	2280441-1	INSERT, SHEAR	13
-	1	1	1	1	1	3-22280-3	SPRING, COMPRESSION	12
-	1	1	1	1	1	356885-4	STOP, SHEAR	11
²²	-	1	1	1	1	462843-7	TERMINAL SUPPORT	9
²¹	1	1	1	1	1	464291-5	ANVIL, SAND-BLASTED 22-18	8
²¹	-	1	1	1	1	803925-2	GUIDE, CARRIER SCRAP	7
-	1	1	1	1	1	690468-6	DEPRESSOR SHEAR, REAR	6
²²	-	1	1	1	1	462431-5	WIRE FUNNEL	5
-	1	1	1	1	1	238009-3	BLOCK, FL CRIMPER SPACER	4
¹	1	1	1	1	1	464290-3	CRIMPER, SEMI-FLAT 22-18	1
	-77	-7	-6	-5	-2	PART NO	DESCRIPTION	ITEM NO

DIMENSIONS:		TOLERANCES UNLESS OTHERWISE SPECIFIED:		DRAWING NO		SHEET	
mm	0 PLC ±	1 PLC ±	2 PLC ±	3 PLC ±	4 PLC ±	5 PLC ±	6 PLC ±
	ANGLES	FINISH					
MATERIAL		WEIGHT		SCALE	1:1	SHEET	1 OF 4

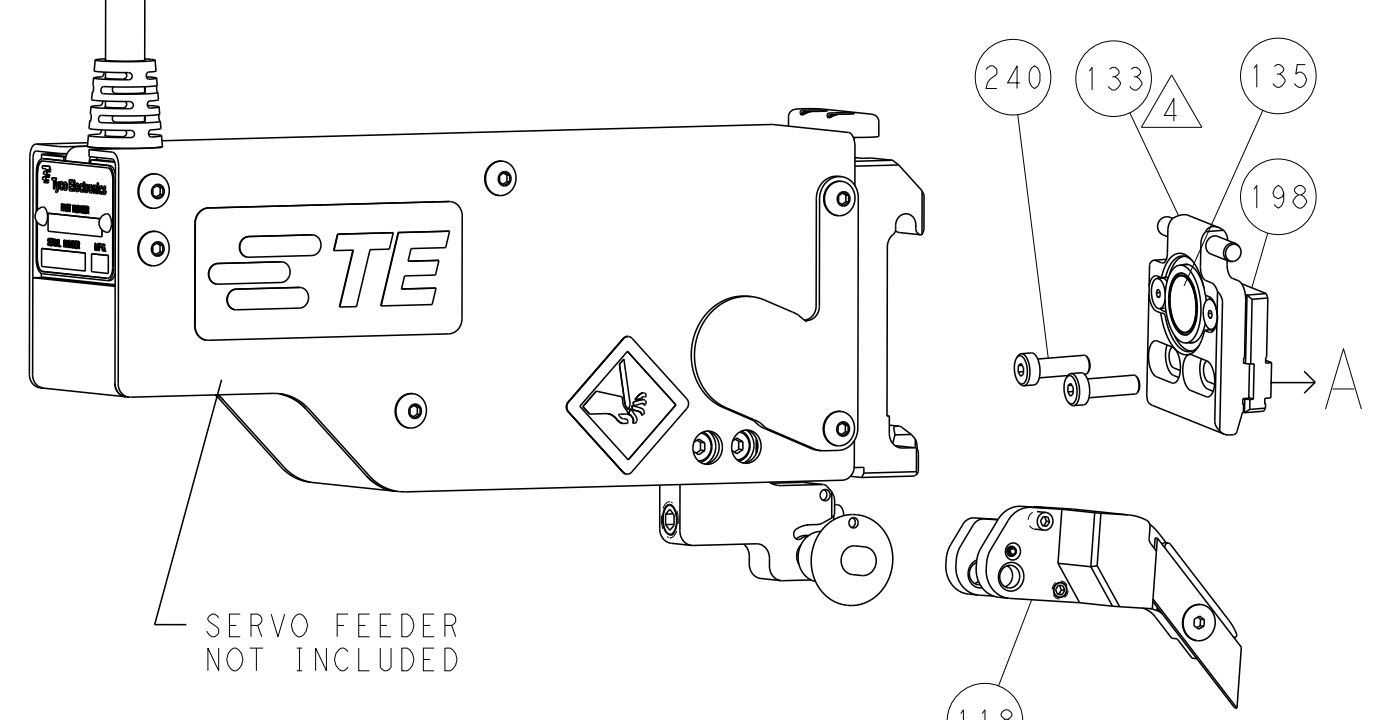
LOC	DIST	REVISIONS			
P	LTN	DESCRIPTION	DATE	OWN	APVD
A	66	SEE SHEET 1	-	-	-

FEED TYPE

PNEUMATIC

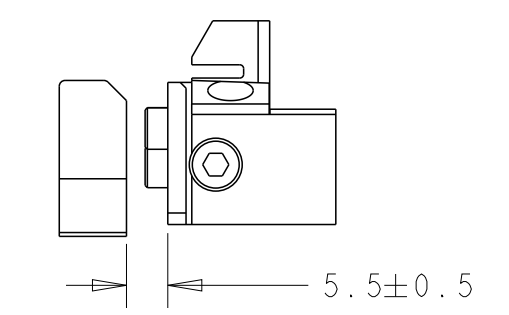
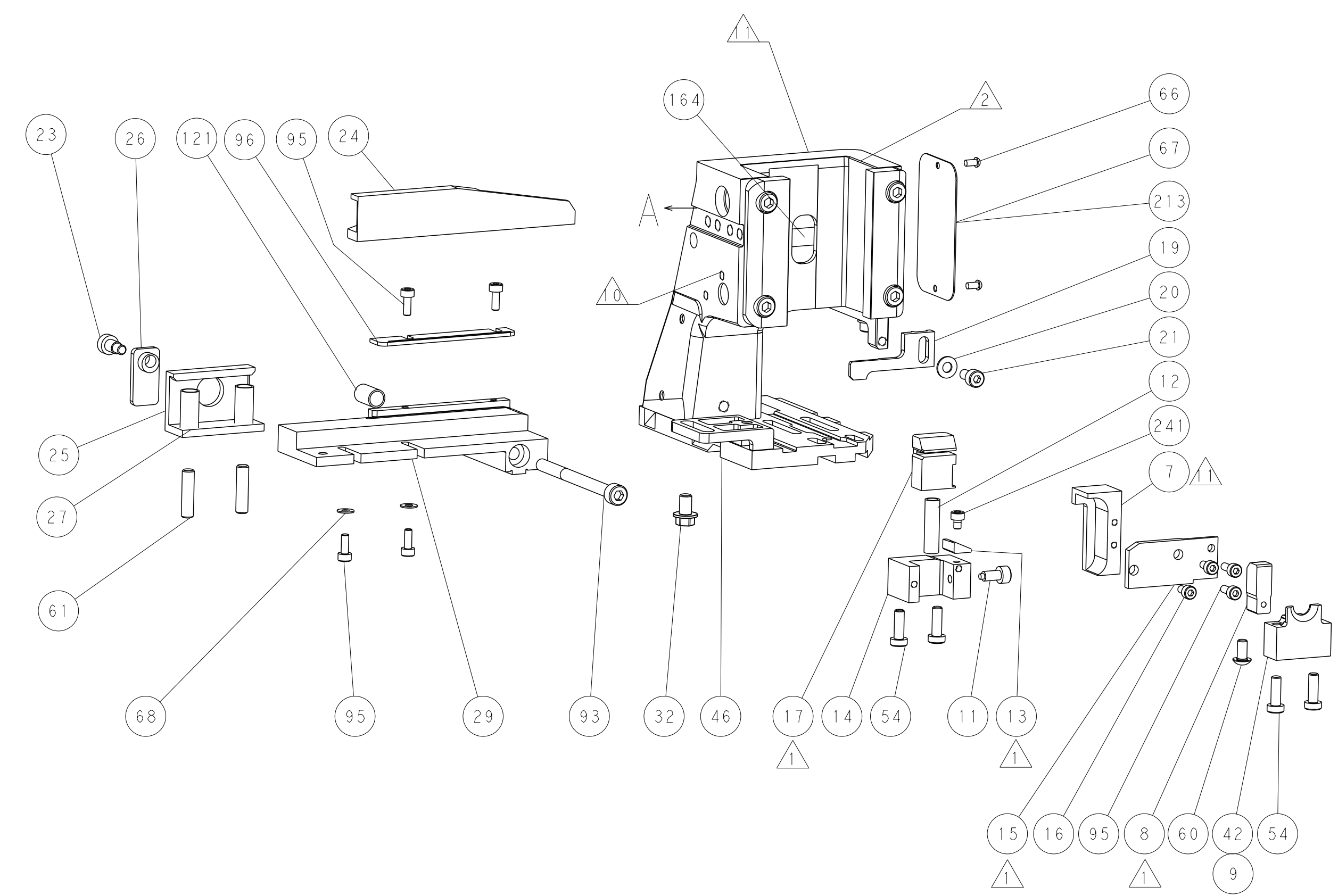
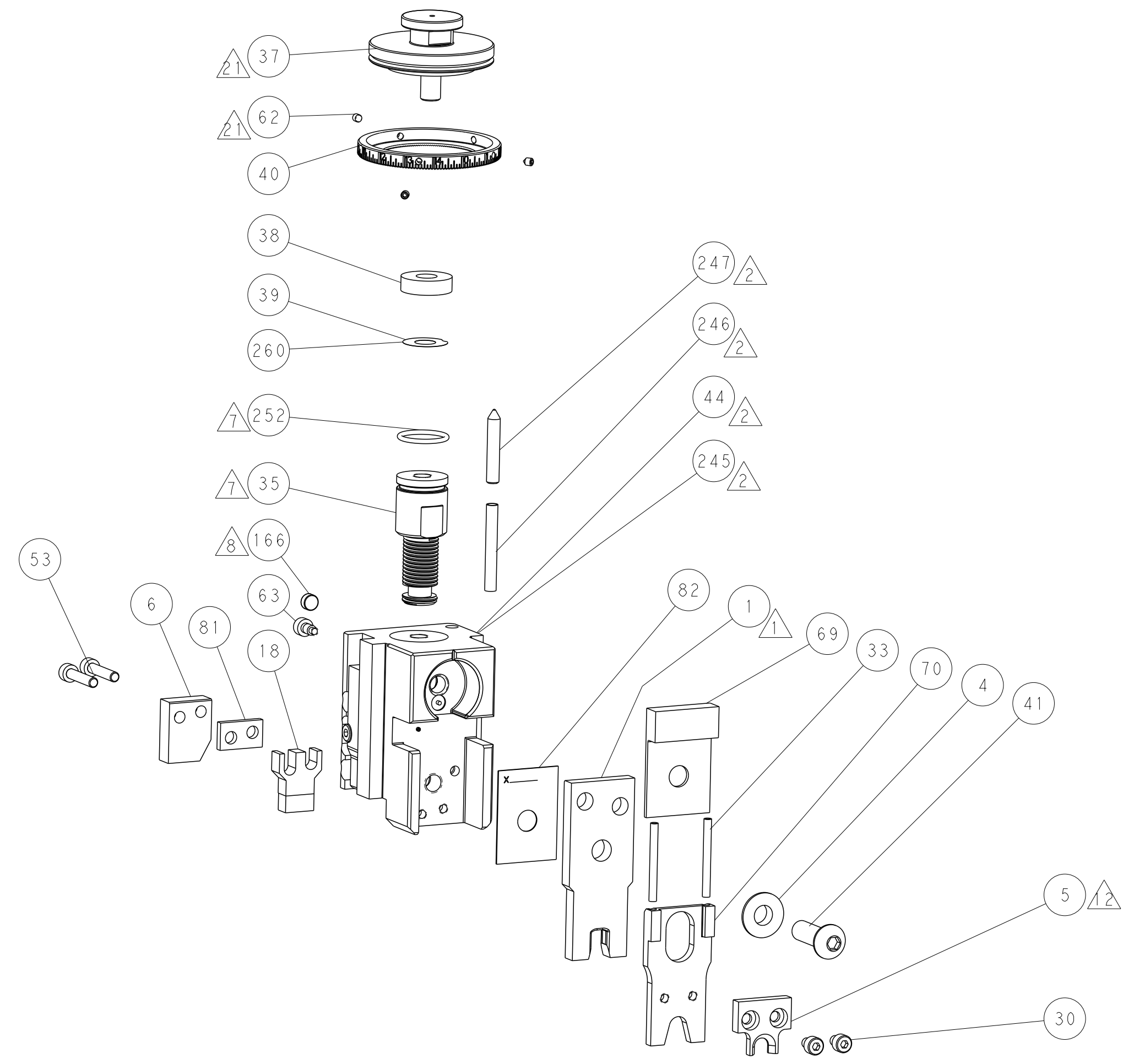
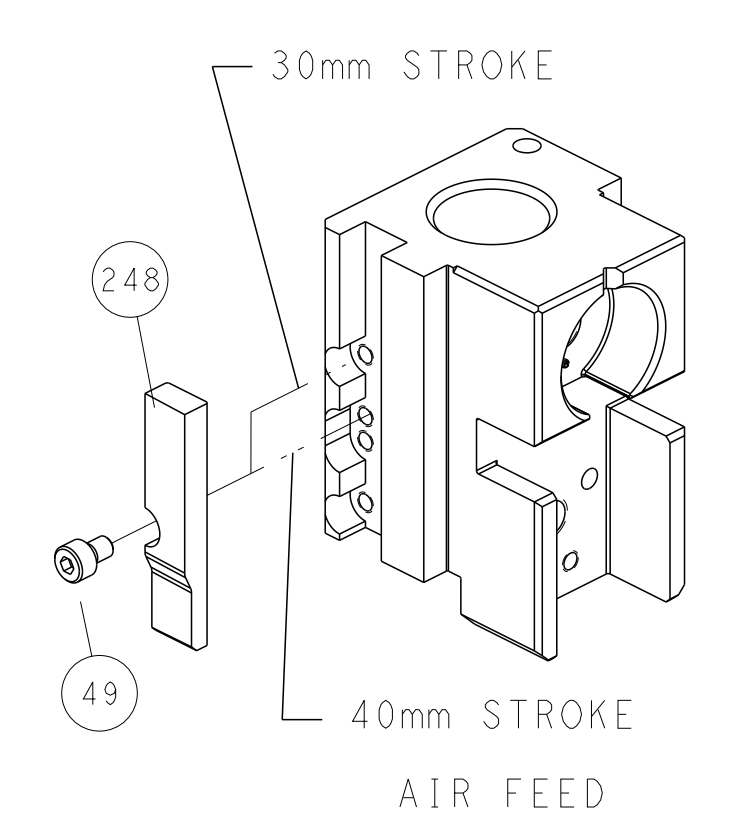


SERVO LATCH PLATE



***FEED FINGER REPRESENTATION ABOVE MAY DIFFER FROM ACTUAL FEED FINGER THAT IS REQUIRED BY THIS APPLICATOR

CAM POSITION



LOWER TOOLING SET-UP

ATLANTIC VERSION
 Shown on sheets 1 of 4 & 2 of 4
 (Pacific version shown on sheets 3 of 4 & 4 of 4)

DIMENSIONS: mm		TOLERANCES UNLESS OTHERWISE SPECIFIED: 0 PLC ± 1 PLC ± 2 PLC ± 3 PLC ± 4 PLC ± ANGLES ± FINISH		DWN B. WEAVER 12JUN2012 CHK G. HOFFNER 12JUN2012 APVD T. ELBIN 12JUN2012		NAME Ocean Side Feed Applicator	
MATERIAL:		WEIGHT:		SIZE: A1 CAGE CODE: 00779 DRAWING NO: C=2151029		RESTRICTED TO:	
Customer Accessible Production Drawing				SCALE: 1:1		SHEET 2 OF 4 REV C	

PACIFIC VERSION TERMINATOR INTERFACE ADAPTER	PART NUMBER	REVISION	DESCRIPTION	FEED TYPE	APPLICATOR STYLE CONVERSION CHART						
					CONVERT TO	PART NUMBERS REQUIRED					
	2-2151029-2	C	FINE CRIMP HEIGHT ADJUST	PNEUMATIC	-	-	-	-	-	-	
					SERVO LATCH PLATE	2119951-1	2161540-1	8-2151029-5	1901094-3	1976043-1	2168400-6 (QUANTITY 2)
	2-2151029-5	C	FINE CRIMP HEIGHT ADJUST	SERVO LATCH PLATE $\Delta 4$	-	-	-	-	-	-	
	2-2151029-7	C	FINE CRIMP HEIGHT ADJUST	NONE	-	-	-	-	-	-	
	7-2151029-7	A	CRIMP TOOLING KIT	-	-	-	-	-	-	-	

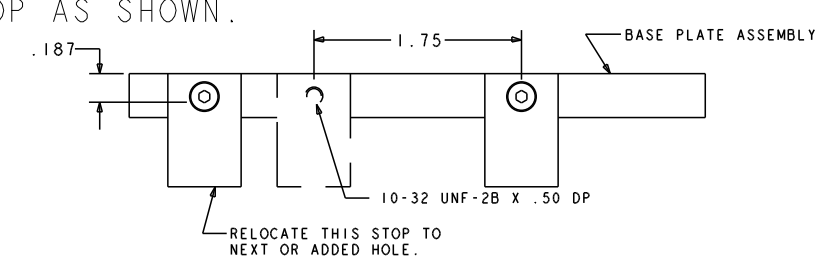
APPLICATOR DATA		
CRIMP	SIZE	TYPE
WIRE	.278 [7.06 mm]	D
INSUL	-	-
APPLICATOR INSTRUCTIONS 408-10389		

TERMINAL DATA: TE TERMINAL		TE CRIMP SPECIFICATION	
TERMINAL NAME: FULLY INSULATED FASTON			
WIRE STRIP LENGTH		INSULATION DIAMETER RANGE	
.296-.328 IN [7.52-8.33 mm]		\varnothing .320 MAX	
TERMINAL APPLICATION SPECIFICATION	114-2123		
TERMINALS APPLIED $\Delta 7$			
TE TERMINAL	TE TERMINAL	TE TERMINAL	TE TERMINAL
4-520447-2	9-520447-2	4-521097-2	

WIRE SIZE	CRIMP HEIGHT INCH [mm]	CRIMP HEIGHT REFERENCE SETTING	\varnothing SOLDER
10 $\Delta 8$	0.100+/-0.002 [2.54+/-0.05]	5.1	.25 IN [6.35mm]
12 OR (4)18	0.095+/-0.002 [2.41+/-0.05]	6.3	.25 IN [6.35mm]

- $\Delta 1$ RECOMMENDED SPARE PARTS
- $\Delta 2$ GREASE BEARING SURFACES LIGHTLY
- 3. LUBRICATE DAILY PER THE APPLICATOR INSTRUCTION SHEET SUPPLIED WITH THE APPLICATOR.
- $\Delta 4$ APPLICATOR SPECIFIC DATA TO BE ENTERED INTO BLANK MEMORY CHIP AT ASSEMBLY. SEE BELOW FOR PART NUMBER:
 PNEUMATIC FEED WITH "SMART APPLICATOR" CONVERSION: 8-2151029-4
 SERVO FEED WITH "FINE CRIMP HEIGHT ADJUST": 8-2151029-5
 SERVO FEED WITH "NON-CRIMP HEIGHT ADJUST": 8-2151029-6
- 5. ADJUSTMENT OF THE STRIPPER MAY BE REQUIRED WHEN MOVING THE APPLICATOR BETWEEN BENCH AND LEADMAKER APPLICATIONS.
- $\Delta 6$ GREASE THREADS, GROOVE AND O-RING ON ITEMS 139 & 152.
- $\Delta 7$ MAGNET MUST BE ORIENTED CORRECTLY IN ORDER TO PROPERLY ACTUATE THE COUNTER.
- $\Delta 8$ CRIMP HEIGHT REFERENCE SETTING WAS THE SETTING USED WHEN THE APPLICATOR WAS QUALIFIED AT THE FACTORY. ADJUSTMENT MAY BE NECESSARY WHEN RUNNING APPLICATOR IN THE FIELD.
- $\Delta 9$ TO CONVERT THE APPLICATOR TO A NON-CARRIER CUTTING STYLE, REMOVE ITEM 13 AND ATTACH TO THE LOCATION ON BACK SIDE OF THE HOUSING. REFER TO INSTRUCTION SHEET FOR ADDITIONAL INFORMATION.
- $\Delta 10$ ITEM 7 MUST BE REMOVED IF APPLICATOR IS USED ON BENCH MACHINE.
- $\Delta 11$ ITEMS 5 AND 9 ARE REQUIRED WHEN RUNNING ON A LEADMAKER. ITEM 42 REQUIRED WHEN RUNNING ON A BENCH MACHINE.
- $\Delta 12$ FEED ADJUSTMENT MAY BE REQUIRED WHEN SWITCHING TERMINALS.
- $\Delta 13$ TO CHECK CRIMP HEIGHT, CRIMP SOLDER (\varnothing .25 IN [6.35mm] 60/40 SOLID CORE) AND MEASURE AT CENTER OF SLUG.

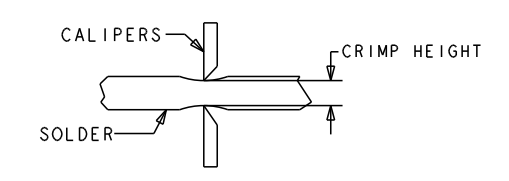
$\Delta 4$ IT MAY BE NECESSARY TO MODIFY THE T-TERMINATING/K-PRESS BASE PLATE BEFORE USE BY ADDING A 10-32 HOLE TO RELOCATE THE FORWARD STOP AS SHOWN.



- $\Delta 5$ ITEMS 253 AND 255 MUST BE INSTALLED IN THE G-TERMINATING UNIT CHIP RELIEF HOLE BEFORE INSTALLING THE APPLICATOR.
- $\Delta 6$ ITEM 257, REQUIRED IF APPLICATOR IS RUN ON T-TERMINATING UNIT/K-PRESS. GUARD, ITEM 256, REQUIRED IF APPLICATOR IS BEING USED ON G-TERMINATOR.
- $\Delta 7$ TERMINAL PITCH NOT COMPATIBLE WITH MECHANICAL FEED.
- $\Delta 8$ CONSULT PRODUCT ENGINEERING BEFORE USING 10AWG WIRE
- $\Delta 9$ RECOMMENDED CRIMP HEIGHT FOR (1)12AWG+(1)18AWG IS .095 \pm .002
- $\Delta 20$ APPLY PART NUMBER 1-23419-5 LOCTITE TO THREADS OF ITEM 62.
- $\Delta 21$ ITEMS NOT SHOWN.
- $\Delta 22$ ITEM 261 REQUIRED WHEN APPLICATOR IS REMOVED FROM LEADMAKER AND PLACED IN AMP-O-LECTRIC* TERMINATING UNIT.

***WARNING**
 ON INSTALLATION, SET WIRE DISC, ITEM 40 TO LARGEST WIRE SIZE SETTING. USE OF SETTINGS BELOW MINIMUM REQUIRED CRIMP HEIGHT SETTING WILL CAUSE DAMAGE TO CRIMP TOOLING.

$\Delta 1$	-	-	-	1	1-18023-1	SCR, SHC, M4x10	262
$\Delta 2$	-	-	-	1	803931-1	BRACKET, HOLD DOWN	261
$\Delta 16$	-	REF	REF	REF	462992-5	GUARD ASSY	257
$\Delta 16$	-	REF	REF	REF	679532-1	INSERT, GUARD	256
$\Delta 15$	-	1	1	1	189728-1	BRACKET, SPACER	255
$\Delta 15$	-	1	1	1	568681-1	SPACER, BASE PLATE	253
	-	1	1	1	2119782-1	FINE ADJUST HEAD ASM, PACIFIC STYLE	251
	-	-	-	1	2119640-1	PUSH ROD, AIR FEED	250
	-	-	-	1	2079988-1	BUSHING, LCH5-12, MISUMI	249
	-77	-27	-25	-22	PART NO	DESCRIPTION	ITEM NO



PACIFIC VERSION
 Shown on sheets 3 of 4 & 4 of 4
 (Atlantic version shown on sheets 1 of 4 & 2 of 4)

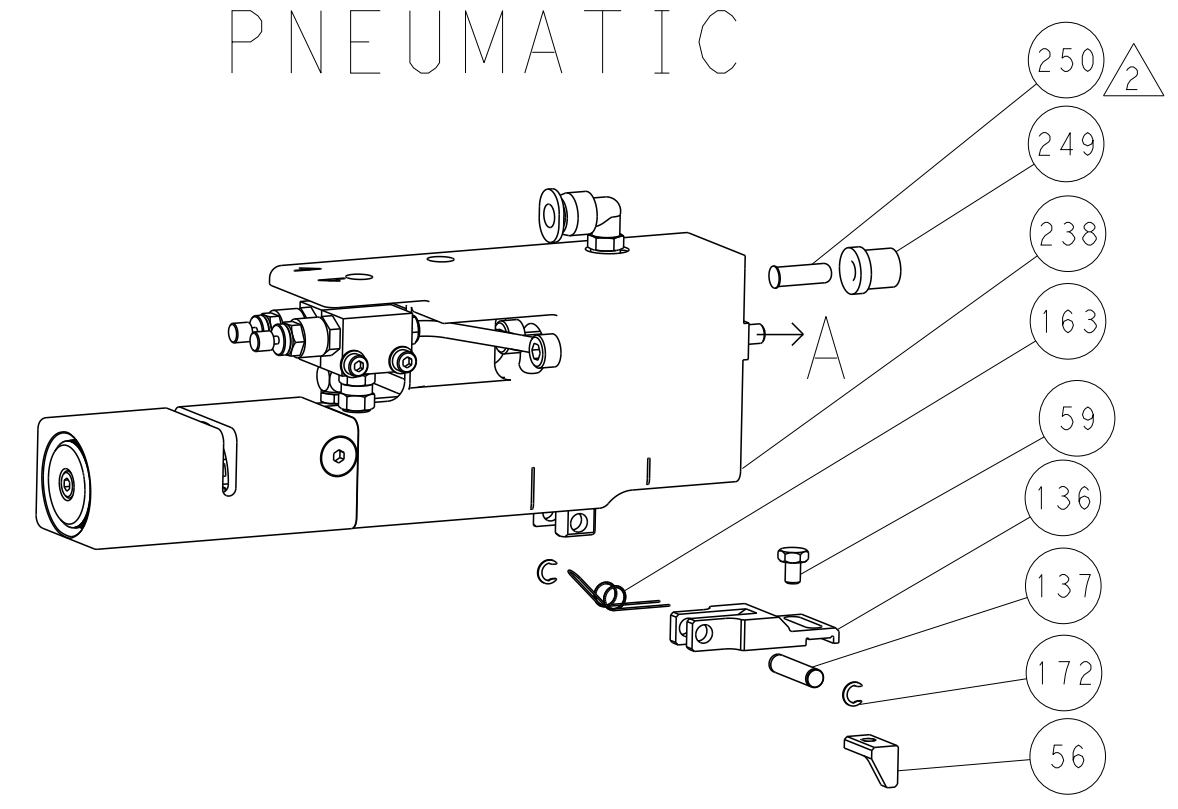
SET UP GAUGE	LOC	DIST	REVISIONS					
2119599-1	A	66	P	LTN	DESCRIPTION	DATE	OWN	APVD
			-	-	SEE SHEET 1	-	-	-

-	1	1	1	1-22279-3	SPRING, COMPRESSION	246	
-	1	1	1	7-18023-7	SCR, SKT HD CAP M3 X 4.0	241	
-	-	2	-	2168400-6	SHCS, LOW HEAD, RoHS, M5 X 16	240	
-	-	-	1	2063440-1	AIR FEED MODULE	238	
-	-	1	-	2119740-2	TAG, IDENTIFICATION	213	
-	-	1	-	1901094-3	SPACER, FEEDER	198	
-	-	-	2	21045-3	RING, RETAIN, EXTERN, 3/16 CRESCENT	172	
-	1	1	1	994969-1	MAGNET, RARE EARTH HIGH ENERGY	166	
-	REF	REF	REF	994970-2	COUNTER, MAGNETIC	164	
-	-	-	1	240638-1	SPRING, FEED FINGER	163	
$\Delta 6$	-	1	1	8-21084-1	O-RING, .801 ID, .070 DIA. MAT.	152	
-	-	-	1	2119641-2	FEED CAM, AIR FEED	151	
-	1	1	1	2119798-2	DETENT PIN	145	
-	1	1	1	2079383-8	SCR, BHSC, RoHS (M4 X 16)	144	
-	4	4	4	2168400-5	SHCS, LOW HEAD, RoHS, M4 X 20	143	
-	1	1	1	2-2119656-0	APPLICATOR BASIC ASSEMBLY, SF	141	
-	1	1	1	2119650-1	RAM, ASIAN STYLE, SIDE FEED	140	
$\Delta 6$	-	1	1	2119092-2	BOLT, ADJUSTMENT	139	
-	-	-	1	3-23627-7	PIN, RETAIN, GRVD, 3/16 X .854	137	
-	-	-	1	2119799-1	HOLDER, FEED FINGER, AF	136	
$\Delta 4$	-	REF	REF	SEE NOTE 4	MEMORY CHIP, PROGRAMMED	135	
-	-	1	-	1633743-1	SERVO FEED LATCH ASM	133	
-	1	1	1	1-22281-8	SPRING, COMPRESSION	121	
-	1	1	1	1-690438-0	FRONT STRIP GUIDE	96	
-	6	6	6	2168083-1	SCR, SKT HD CAP, RoHS, M3 X 8.0	95	
-	1	1	1	2168083-6	SCR, SKT HD CAP, RoHS, M5 X 65	93	
-	1	1	1	455888-4	SPACER, CRIMPER	82	
-	1	1	1	240641-6	SPACER	81	
-	1	1	1	2119956-1	DOCUMENTATION PACKAGE	71	
-	1	1	1	2161332-2	DEPRESSOR, WIRE FUNNEL	70	
-	1	1	1	2161331-1	SPACER, WIRE FUNNEL DEPRESSOR	69	
-	2	2	2	1-18028-4	WASHER, FLAT, REG M3	68	
-	1	-	1	2119740-1	TAG, IDENTIFICATION	67	
-	2	2	2	2168078-1	SCREW, DRIVE, RH, RoHS, 2 x .188	66	
-	1	1	1	2119793-1	LIMITER, ADJUSTMENT BOLT	63	
$\Delta 20$	-	3	3	992763-5	SCR, SET, SOC, CONE POINT, M3 X 4.0	62	
-	2	2	2	2-18032-5	SCR, SET, FLT POINT M5 X 20.0	61	
-	-	-	1	5-18022-5	SCR, HEX HD CAP, M4 X 6.0	59	
-	-	-	1	462427-2	FINGER, FEED	56	
-	2	2	2	2168083-9	SCR, SKT HD CAP, RoHS, M4 X 20	53	
-	-	-	1	18023-9	SCR, SKT HD CAP M4 X 6.0	49	
$\Delta 11$	-	1	1	462433-8	SUPPORT, INSULATION	42	
-	1	1	1	2079383-7	SCR, BHSC, RoHS (M8 X 25)	41	
-	1	1	1	2119645-1	DISC, NUMBERED FA WIRE ADJUSTMENT	40	
-	1	1	1	2119957-1	APPLICATOR SHIM PACK	39	
-	1	1	1	2119644-1	RAM WASHER, PRECISION	38	
-	2	2	2	5-22278-1	SPRING, COMPRESSION	33	
-	1	1	1	2161328-1	HEX HEAD, FLANGED, M5 X 8mm LONG	32	
-	2	2	2	1-2168083-4	SCR, SKT HD CAP, RoHS, M4 X 5	30	
-	1	1	1	2161336-1	PLATE, REAR STRIP GUIDE	29	
-	2	2	2	22281-9	SPRING, COMPRESSION	27	
-	1	1	1	356835-1	LEVER, DRAG RELEASE	26	
-	1	1	1	240792-1	DRAG, TERMINAL	25	
-	1	1	1	684042-5	GUIDE, STRIP, FRONT	24	
-	1	1	1	980371-4	SCR, SKT HD SHLDR 5.0 DIA X 6.0	23	
-	1	1	1	2168083-2	SCR, SKT HD CAP, RoHS, M4 X 8.0	21	
-	1	1	1	1-18028-2	WASHER, FLAT, REG M4	20	
-	1	1	1	2119533-1	STRIPPER, SIDE FEED	19	
-	1	1	1	463460-3	HOLD DOWN, TERMINAL	18	
$\Delta 1$	-	1	1	469542-3	REAR FLOATING SHEAR	17	
-	2	2	2	1-2168083-1	SCR, SKT HD CAP, RoHS, M3 X 6	16	
$\Delta 1$	-	1	1	2161335-2	SHEAR PLATE, REAR	15	
-	1	1	1	2119862-2	SHEAR HOLDER, REAR	14	
$\Delta 1$	-	1	1	2280441-1	INSERT, SHEAR	13	
-	1	1	1	3-22280-3	SPRING, COMPRESSION	12	
-	1	1	1	356885-4	STOP, SHEAR	11	
$\Delta 1$	-	1	1	462843-7	TERMINAL SUPPORT	9	
$\Delta 10$	1	1	1	464291-5	ANVIL, SAND-BLASTED 22-18	8	
-	1	1	1	803925-2	GUIDE, CARRIER SCRAP	7	
-	1	1	1	690468-6	DEPRESSOR SHEAR, REAR	6	
$\Delta 11$	-	1	1	462431-5	WIRE FUNNEL	5	
-	1	1	1	238009-3	BLOCK, FL CRIMPER SPACER	4	
$\Delta 1$	1	1	1	464290-3	CRIMPER, SEMI-FLAT 22-18	1	
	-77	-27	-25	-22	PART NO	DESCRIPTION	ITEM NO

DIMENSIONS:		TOLERANCES UNLESS OTHERWISE SPECIFIED:		DWG		NAME	
mm	0 PLC	±		12 JUN 2012	TE Connectivity		
	1 PLC	±		12 JUN 2012	Harrisburg, PA 17105-3608		
	2 PLC	±					
	3 PLC	±					
	4 PLC	±					
	ANGLES	±					
	FINISH	±					
MATERIAL				WEIGHT	SIZE	CAGE CODE	DRAWING NO
					A1	00779	2151029
					Customer Accessible Production Drawing		
					SCALE	SHEET	OF
					1:1	3	4

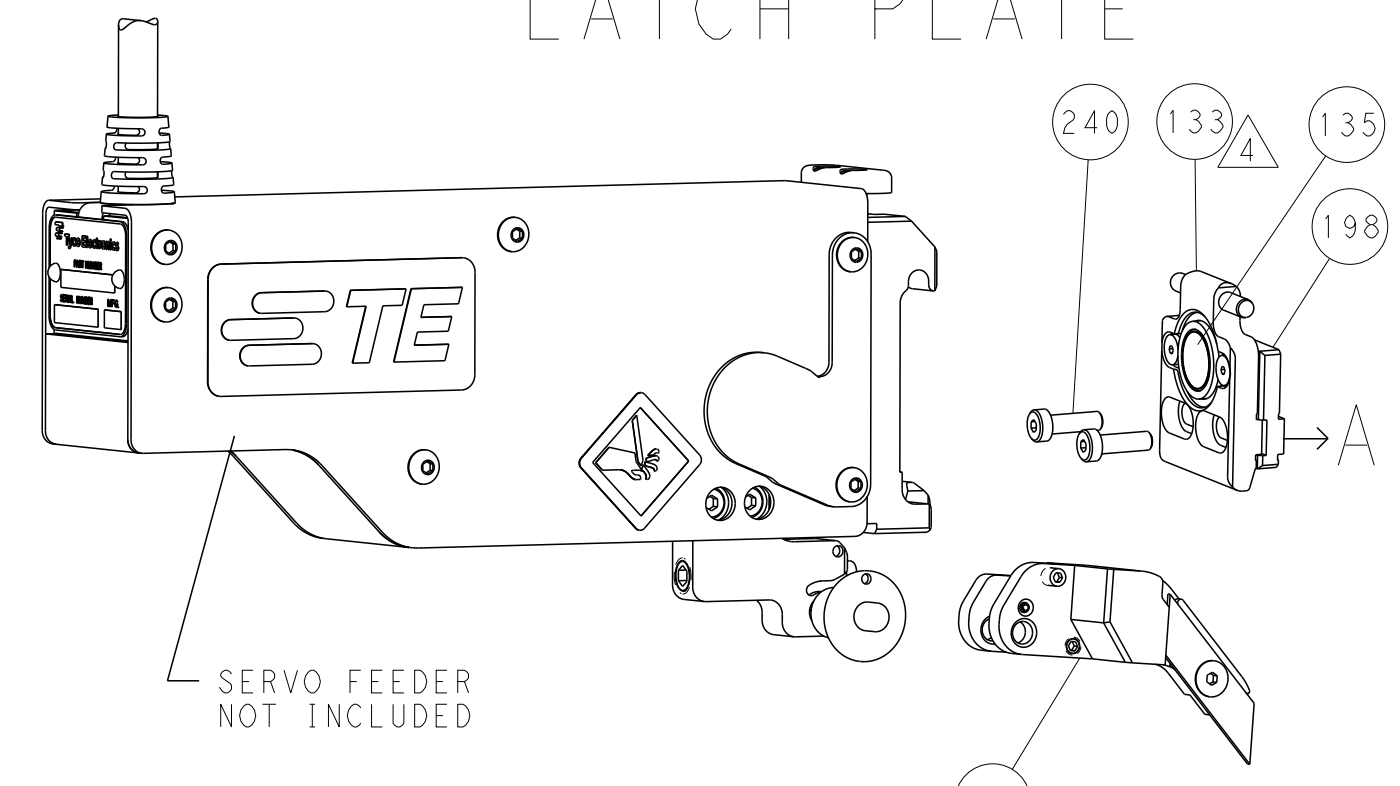
LOC		DIST		REVISIONS			
A	66	P	LTH	DESCRIPTION	DATE	OWN	APVD
-	-	-	-	SEE SHEET 1	-	-	-

FEED TYPE PNEUMATIC



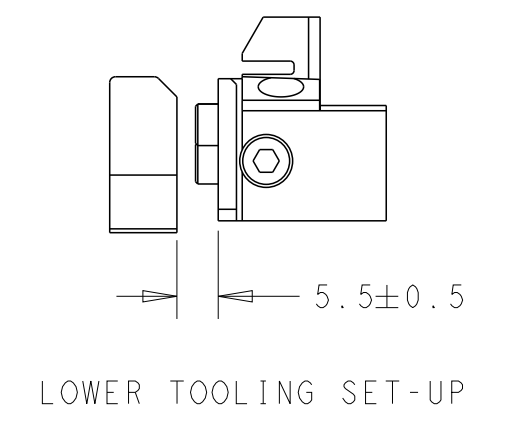
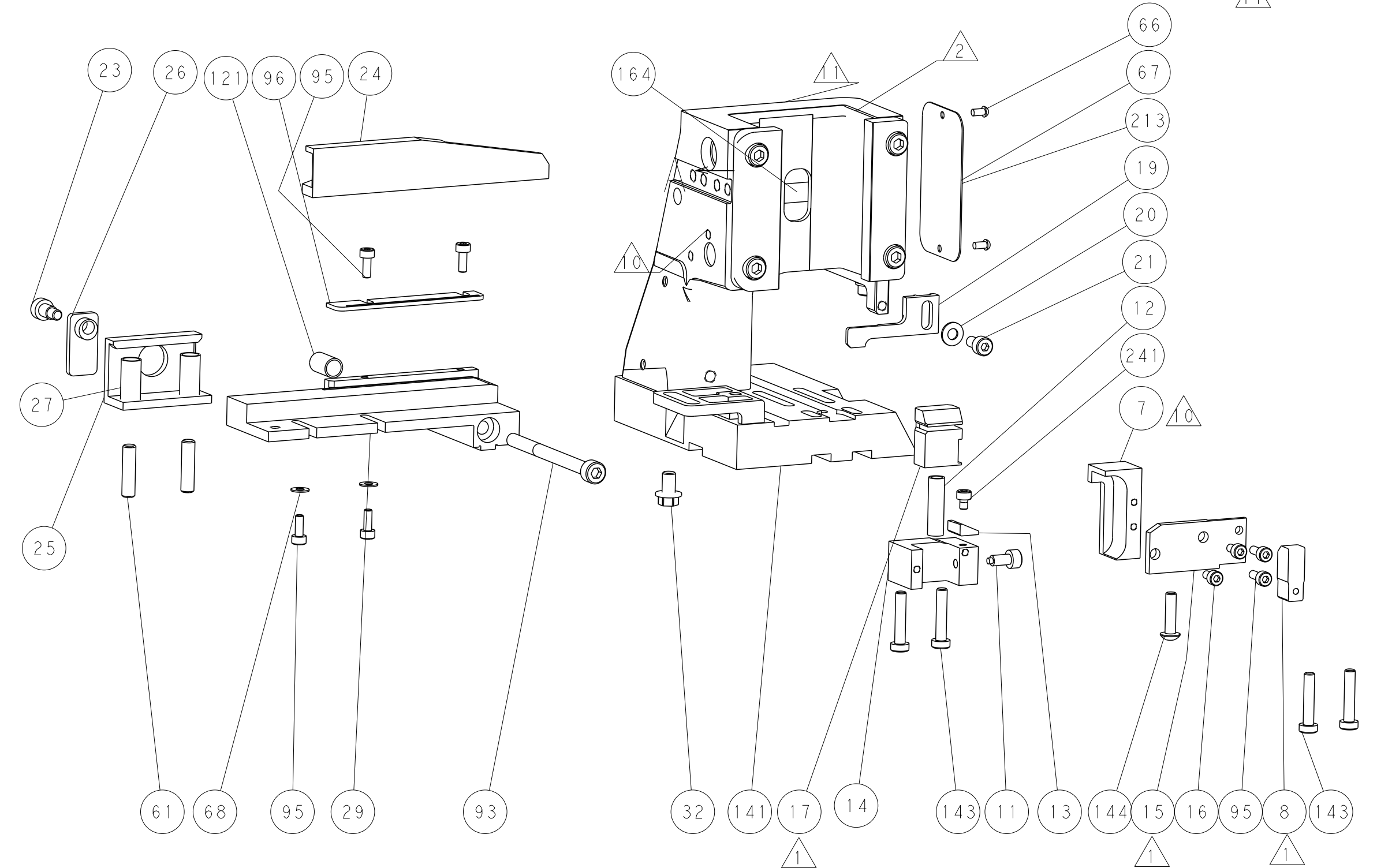
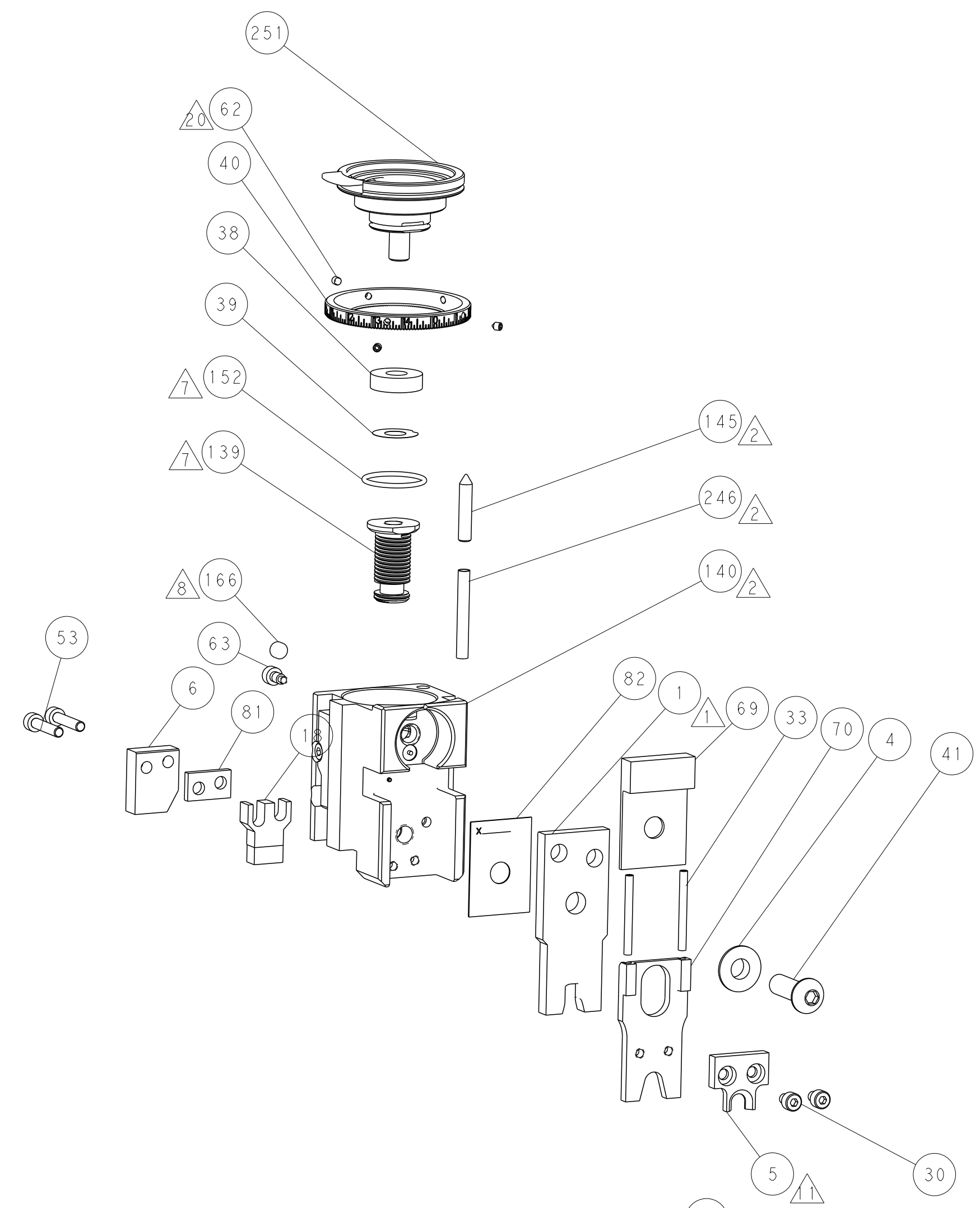
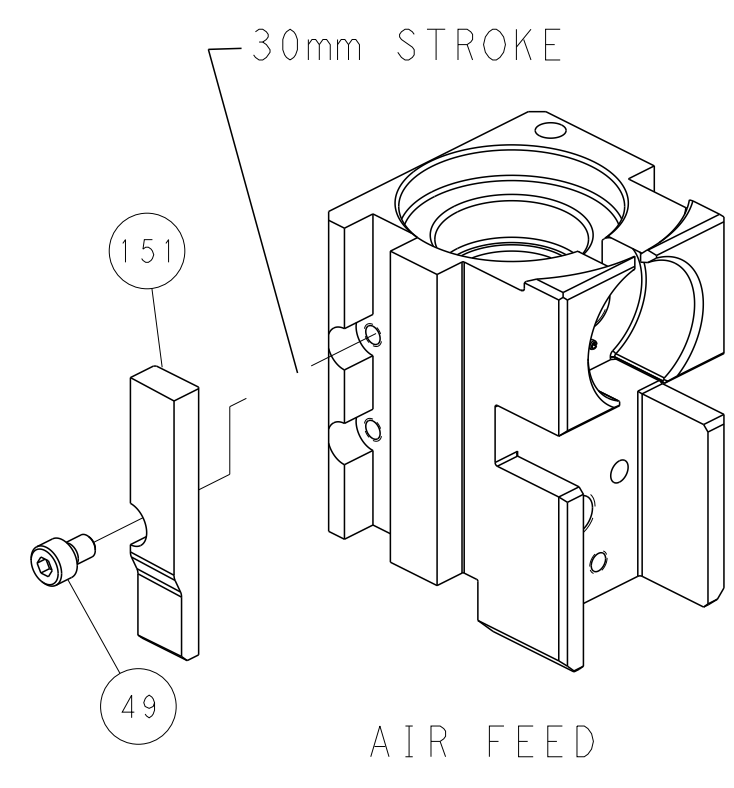
SCALE 1:2

SERVO LATCH PLATE



***FEED FINGER REPRESENTATION ABOVE MAY DIFFER FROM ACTUAL FEED FINGER THAT IS REQUIRED BY THIS APPLICATOR

CAM POSITION



PACIFIC VERSION
 Shown on sheets 3 of 4 & 4 of 4
 (Atlantic version shown on sheets 1 of 4 & 2 of 4)

DIMENSIONS:		TOLERANCES UNLESS OTHERWISE SPECIFIED:		DWN B. WEAVER 12JUN2012		STE Connectivity Harrisburg, PA 17105-3608	
mm	0 PLC ±	1 PLC ±	2 PLC ±	3 PLC ±	4 PLC ±	APVD T. ELBIN 12JUN2012	NAME Ocean Side Feed Applicator
MATERIAL	FINISH	WEIGHT	SIZE	CAGE CODE	DRAWING NO	RESTRICTED TO	
			A	00779	2151029	Customer Accessible Production Drawing	SCALE 1:1 SHEET 4 OF 4 REV C