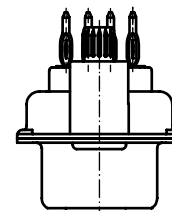
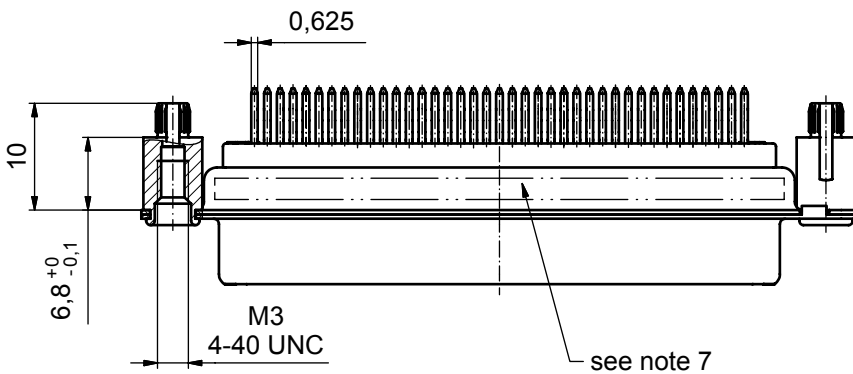
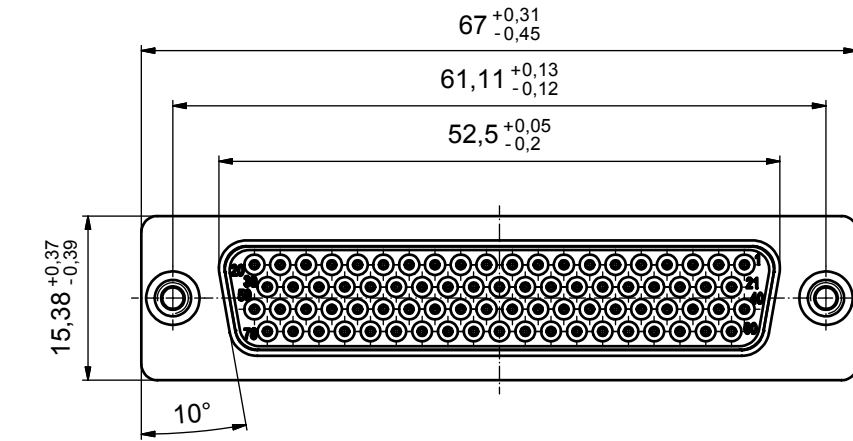
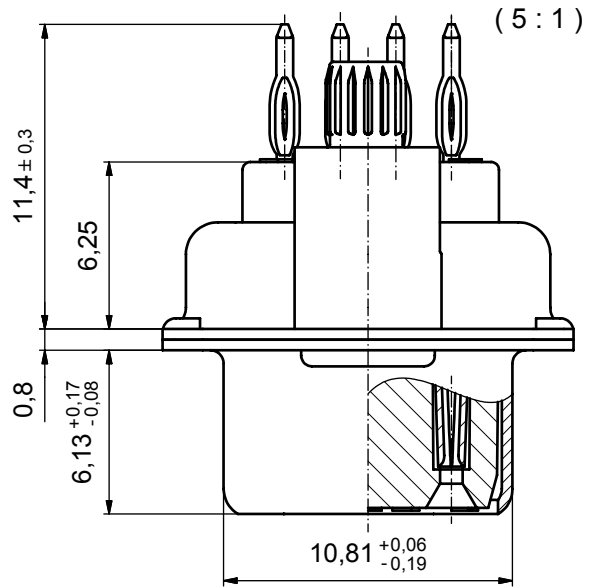


**NOTES:**

1. METALSHELLS: STEEL; min. 315µin TIN over 40-80µin NICKEL
2. INSULATORS: PBT GF UL 94 V-0, BLACK
3. PRESS-FIT CONTACTS: COPPER ALLOY  
 PLATING MATING AREA: FLASH GOLD over NICKEL  
 PLATING TERMINATION AREA: 20-40µin TIN (SN 100)  
 P.C.B. THICKNESS: min. 1,6mm
4. PUSH IN PIN: COPPER ALLOY
5. P.C.B.HOLE DRILLINGS SEE SHEET 2
6. MAXIMUM TORQUE VALUE FOR THREAD: 6 in.LB
7. CONNECTOR IS PART MARKED: PART-NO. CONEC ABC



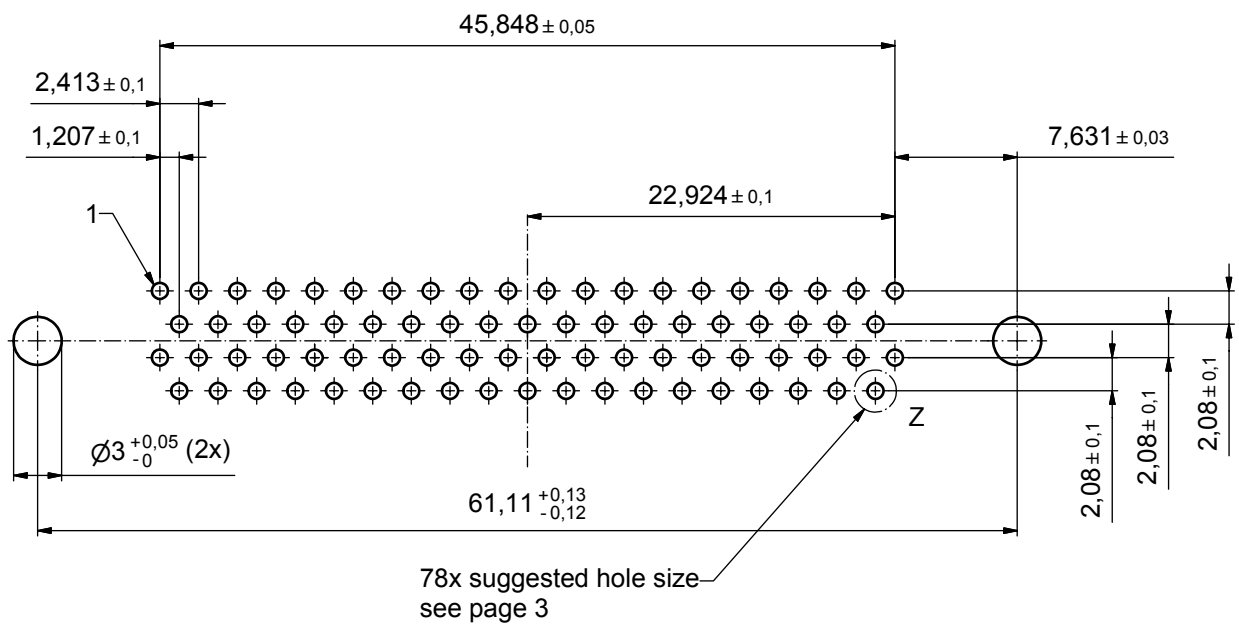
Directive 2002/95/EC  
 „RoHS“  
 Compliant

Art.-Nr. Part-No.	
M3	4-40 UNC
DSH5XSGAA57X	DSH5XSGAA58X

APPROVAL # FREIGABE # DEBLOCAGE # AUTORIZACION # APPROVAL	
CUSTOMER APPROVAL DATE:	
NAME:	TITLE:
COMPANY NAME:	
APPROVAL # FREIGABE # DEBLOCAGE # AUTORIZACION # APPROVAL	

THIS DRAWING MAY NOT BE COPIED OR REPRODUCED IN ANY WAY, AND MAY NOT BE PASSED ON TO A THIRD PARTY WITHOUT WRITTEN PERMISSION. OWNERSHIP AND COPYRIGHT OF CONEC GmbH				tolerance		dim. in mm	scale: 2:1 (5:1)		
DO NOT ALTER CAD DRAWING BY HAND				date			material: see notes		
a Origin				drawn	19.04.07	name		title: <b>D-SUB HD FEMALE</b> 78pos. PRESS-FIT STRAIGHT with push in pin	
rev. description				appd.	19.04.07	norm			
				d-old		dwg no: Inventor 10			DIN-A3
						part no: see table			sh: 1





APPROVAL # FREIGABE # DEBLOCAGE # AUTORIZACION # APPROVAL	
CUSTOMER APPROVAL DATE:	
NAME:	TITLE:
COMPANY NAME:	
APPROVAL # FREIGABE # DEBLOCAGE # AUTORIZACION # APPROVAL	

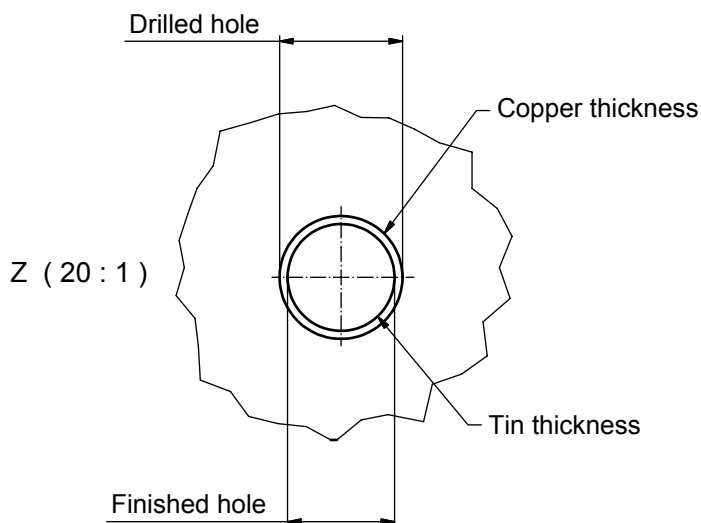
THIS DRAWING MAY NOT BE COPIED OR REPRODUCED IN ANY WAY, AND MAY NOT BE PASSED ON TO A THIRD PARTY WITHOUT WRITTEN PERMISSION. OWNERSHIP AND COPYRIGHT OF CONEC GmbH				tolerance		 dim. in mm	scale: 3:1	
DO NOT ALTER CAD DRAWING BY HAND				date	name		material:	
a	Origin			drawn	06.07.07	Sonnenberg	title:	
rev.	description	date	name	appd.	06.07.07	Kühle	P.C.B. HOLE DRILLINGS	
				norm			D-SUB HD 78pos. PRESS-FIT STRAIGHT	
				d-old			with push in pin	
							dwg no:	Inventor 10
								DIN-A3
								sh: 2
							part no:	SEE SHEET 1



**SUGGESTED PCB HOLE SIZE DIMENSIONS FOR  
D-SUB HD CONNECTORS  
WITH PRESS FIT TERMINATIONS**

**ACCORDING IEC 60352-5**

THROUGH HOLE PLATING	Signal Contact	
	NOMINAL DIAMETER	
TIN-LEAD	DRILLED HOLE	1,15 ±0,025 mm
	COPPER	min. 25µm
	TIN-LEAD	min. 15µm
	FINISHED HOLE	1,0 +0,09 -0,06mm
Galv./HAL TIN	DRILLED HOLE	1,15 ±0,025 mm
	COPPER	min. 25µm
	TIN	5-15µm
	FINISHED HOLE	1,0 +0,09 -0,06mm
CHEM. TIN	DRILLED HOLE	1,15 ±0,025 mm
	COPPER	min. 25µm
	CHEM. TIN	max. 1,5µm
	FINISHED HOLE	1,0 +0,09 -0,06mm



APPROVAL # FREIGABE # DEBLOCAGE # AUTORIZACION # APPROVAL	
CUSTOMER APPROVAL DATE:	
NAME:	TITLE:
COMPANY NAME:	
APPROVAL # FREIGABE # DEBLOCAGE # AUTORIZACION # APPROVAL	

THIS DRAWING MAY NOT BE COPIED OR REPRODUCED IN ANY WAY, AND MAY NOT BE PASSED ON TO A THIRD PARTY WITHOUT WRITTEN PERMISSION. OWNERSHIP AND COPYRIGHT OF CONEC GmbH				tolerance		dim. in mm	scale: 20:1	
				DO NOT ALTER CAD DRAWING BY HAND			material:	
rev.	description	date	name	drawn	date	name	<b>D-SUB HD FEMALE</b> 78pos. PRESS-FIT STRAIGHT with push in pin	
a	Origin			appd.	06.07.07	Kühle		
				norm				
				d-old				
						dwg no: Inventor 10		DIN-A3
						16K1A2053		sh: 3
						part no: SEE SHEET 1		