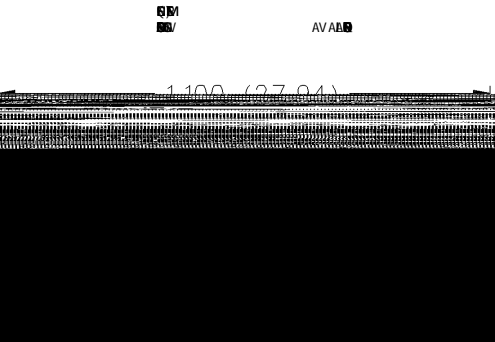
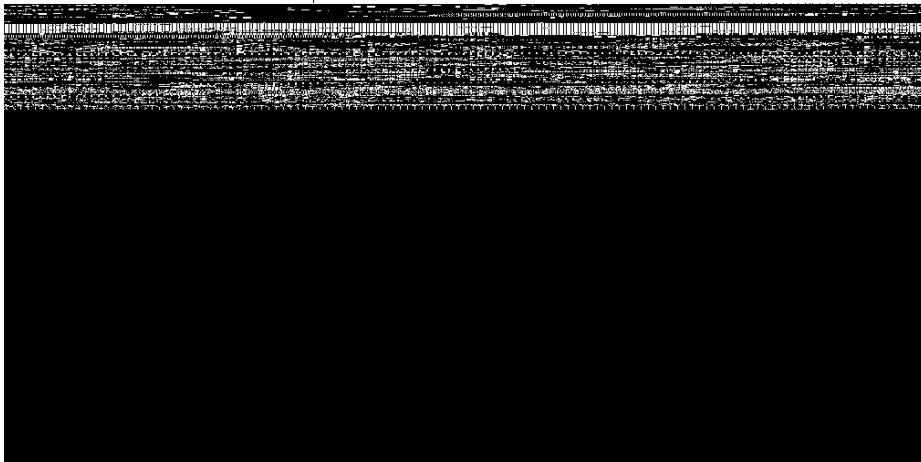
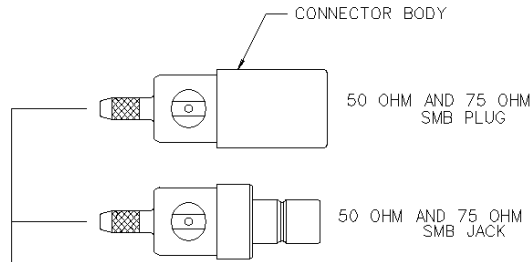


75 Ohm SMB Straight Crimp Type Plug - Solder or Crimp Captivated Contact



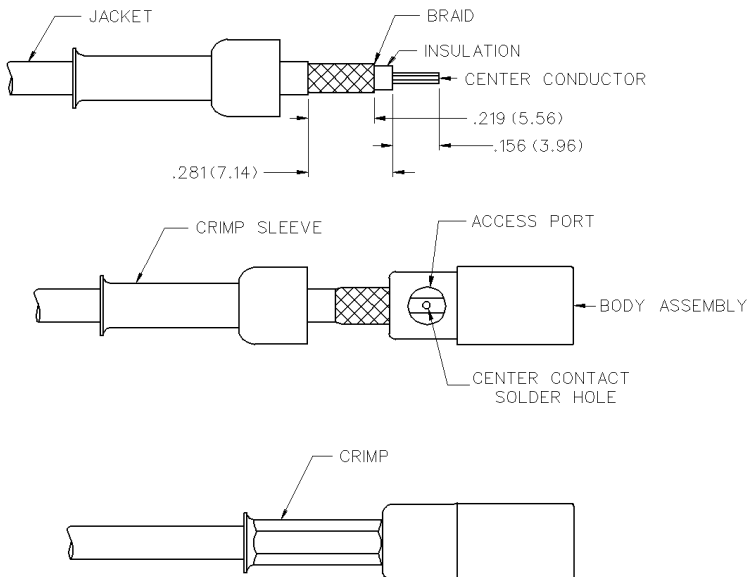
CABLE TYPE	GOLD PLATED	NICKEL PLATED
B 1735 A	131845 -001	131845 -006



CABLE GROUP	PART NUMBER	CRIMP HEX
B -735	131845 -001006	.178452

1. d r a b p t (2p p t e c p t b k t)
2. p b t e n s o s w . D o b t e a e d o A w p b o r e e h t p . w d c a e d o t g t b e d h s e c i m s e e o b e s a w .
3. a b a d s e c a l e h b y a n g a h t t c b a o b t m s c a e o t

Solder Attachment: Solder is recommended. 60/40 tin/lead solder is recommended. 0.020 (0.51) diameter solder is recommended. For 50 Ohm cable, use 141-000091 to 14490 to form. For 75 Ohm cable, use 141000092 to 144000090 to form.



INCHES (MILLIMETERS)
CUSTOMER DRAWINGS AVAILABLE UPON REQUEST