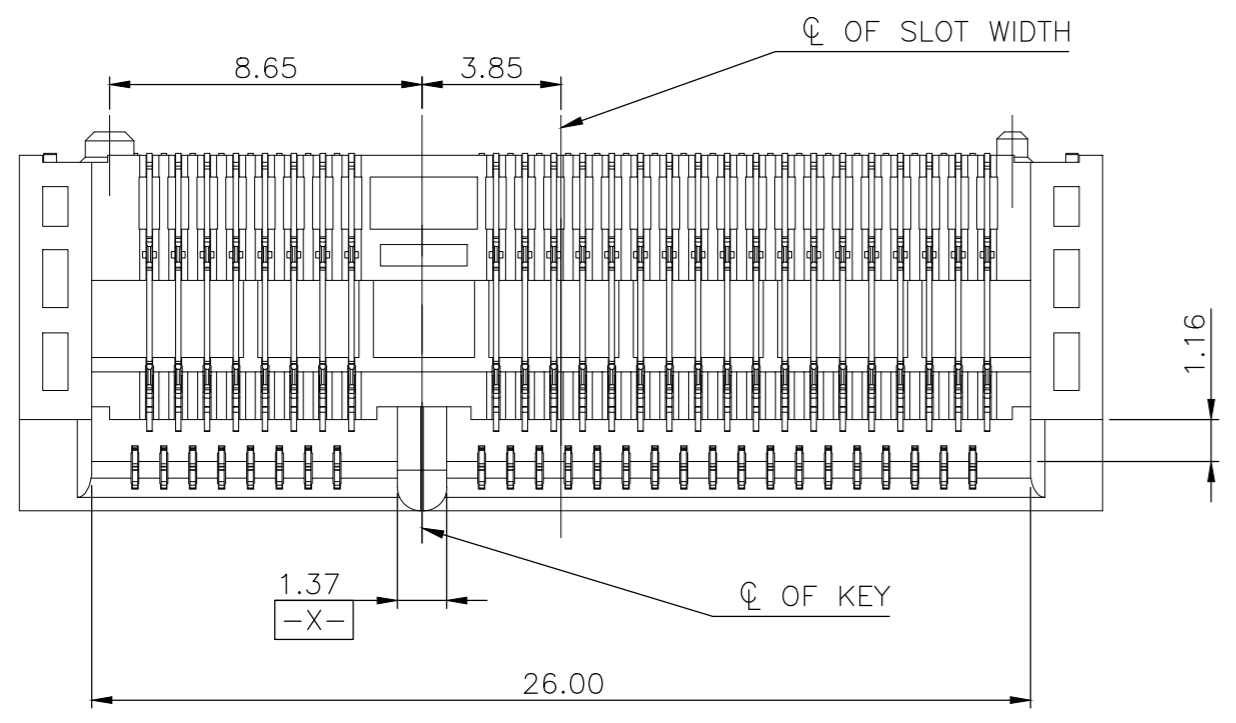


THIS DRAWING IS UNPUBLISHED. RELEASED FOR PUBLICATION  
 © COPYRIGHT 2011 BY TE CONNECTIVITY. ALL RIGHTS RESERVED.

| REVISIONS |     |                           |         |     |      |
|-----------|-----|---------------------------|---------|-----|------|
| P         | LTR | DESCRIPTION               | DATE    | DWN | APVD |
| C         |     | REVISED PER ECR-18-000544 | 15JAN18 | DZ  | SL   |



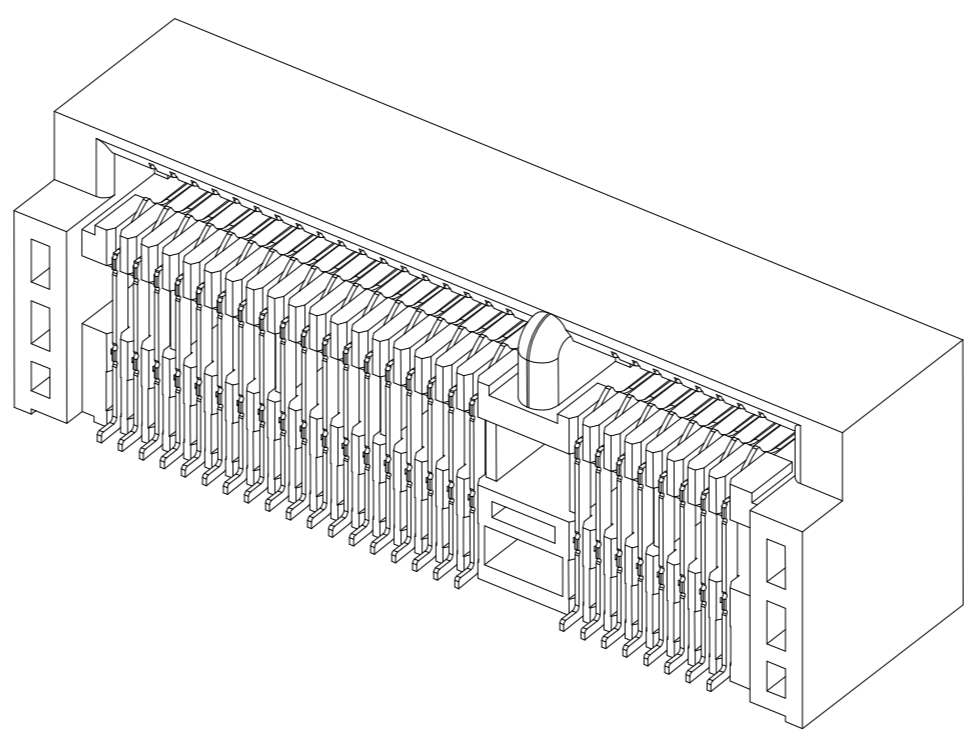
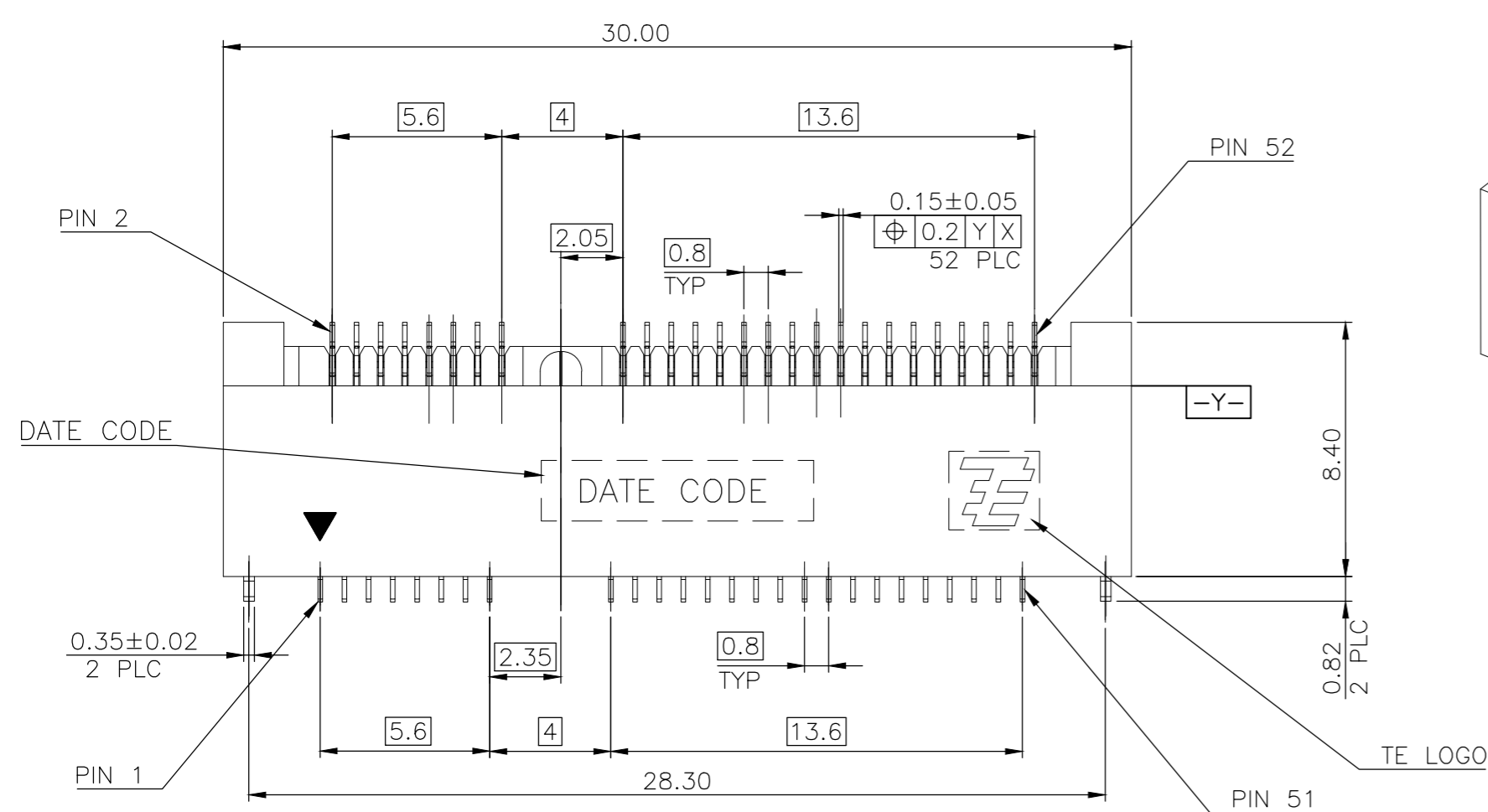
- NOTES:
- MATERIAL:  
HOUSING: LCP WITH 30% GF, UL94 V-0, BLACK COLOR.  
CONTACTS: PHOSPHOR BRONZE.  
PEGS: BRASS.
  - FINISH:  
CONTACTS: (SEE TABLE) GOLD PLATED ON CONTACT AREA, GOLD FLASH ON SOLDER AREA, WITH ENTIRE CONTACT UNDERPLATED 1.27µm [50µ"] MIN. NICKEL.  
PEGS: 3.048µm [120µ"] MIN. MATTE-TIN OVER 1.27µm [50µ"] MIN. NICKEL.
  - REFLOW SOLDER CAPABLE TO 260° PER TEC-109-201, CONDITION B.

PCI-E MINI CARD CONNECTOR  
SIGNAL ASSIGNMENTS

| PIN# | NAME               | PIN# | NAME       |
|------|--------------------|------|------------|
| 51   | Reserved           | 52   | +3.3Vaux   |
| 49   | Reserved           | 50   | GND        |
| 47   | Reserved           | 48   | +1.5V      |
| 45   | Reserved           | 46   | LED_WPAN#  |
| 43   | GND                | 44   | LED_WLAN#  |
| 41   | +3.3Vaux           | 42   | LED_WWAN#  |
| 39   | +3.3Vaux           | 40   | GND        |
| 37   | GND                | 38   | USB_D+     |
| 35   | GND                | 36   | USB_D-     |
| 33   | PETp0              | 34   | GND        |
| 31   | PETn0              | 32   | SMB_DATA   |
| 29   | GND                | 30   | SMB_CLK    |
| 27   | GND                | 28   | +1.5V      |
| 25   | PERp0              | 26   | GND        |
| 23   | PERn0              | 24   | +3.3Vaux   |
| 21   | GND                | 22   | PERST#     |
| 19   | Reserved* (UIM_C4) | 20   | W_DISABLE# |
| 17   | Reserved* (UIM_C8) | 18   | GND        |

mSATA CONNECTOR  
SIGNAL ASSIGNMENTS

| PIN# | NAME               | PIN# | NAME               |
|------|--------------------|------|--------------------|
| 51   | Presence Defection | 52   | +3.3V              |
| 49   | DA/DSS             | 50   | GND                |
| 47   | Vendor             | 48   | +1.5V              |
| 45   | Vendor             | 46   | Reserved           |
| 43   | No Connect         | 44   | Reserved           |
| 41   | +3.3V              | 42   | Reserved           |
| 39   | +3.3V              | 40   | GND                |
| 37   | GND                | 38   | Reserved           |
| 35   | GND                | 36   | Reserved           |
| 33   | +A                 | 34   | GND                |
| 31   | -A                 | 32   | Two Wire Interface |
| 29   | GND                | 30   | Two Wire Interface |
| 27   | GND                | 28   | +1.5V              |
| 25   | -B                 | 26   | GND                |
| 23   | +B                 | 24   | +3.3V              |
| 21   | GND                | 22   | Reserved           |
| 19   | Reserved           | 20   | Reserved           |
| 17   | Reserved           | 18   | GND                |



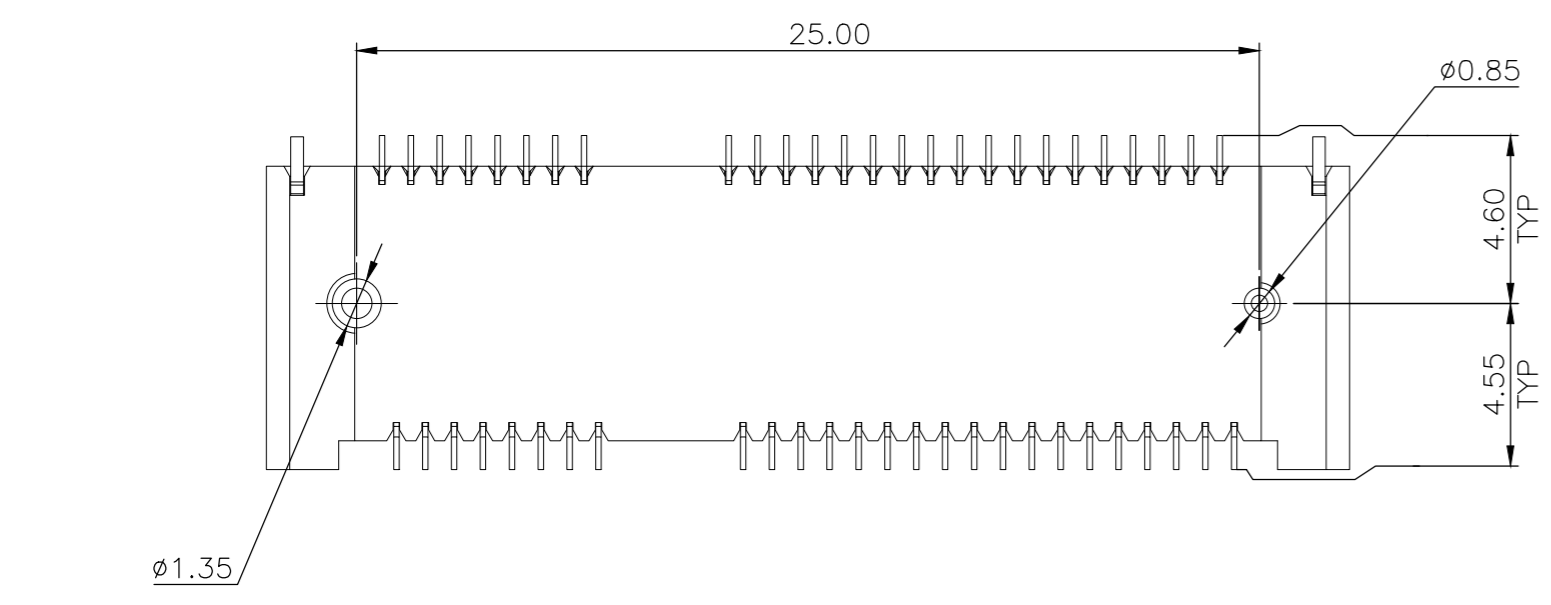
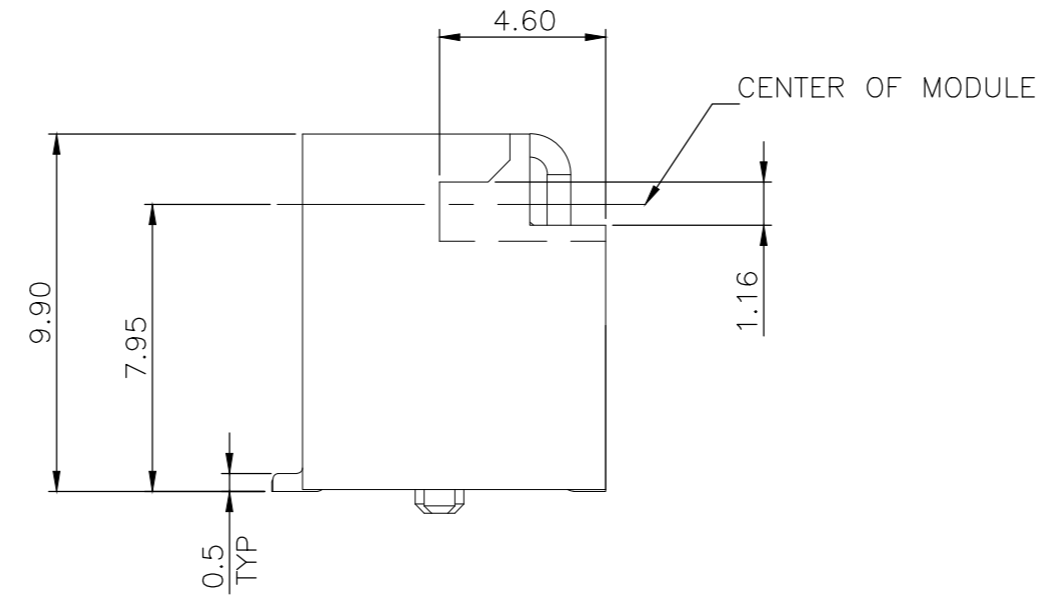
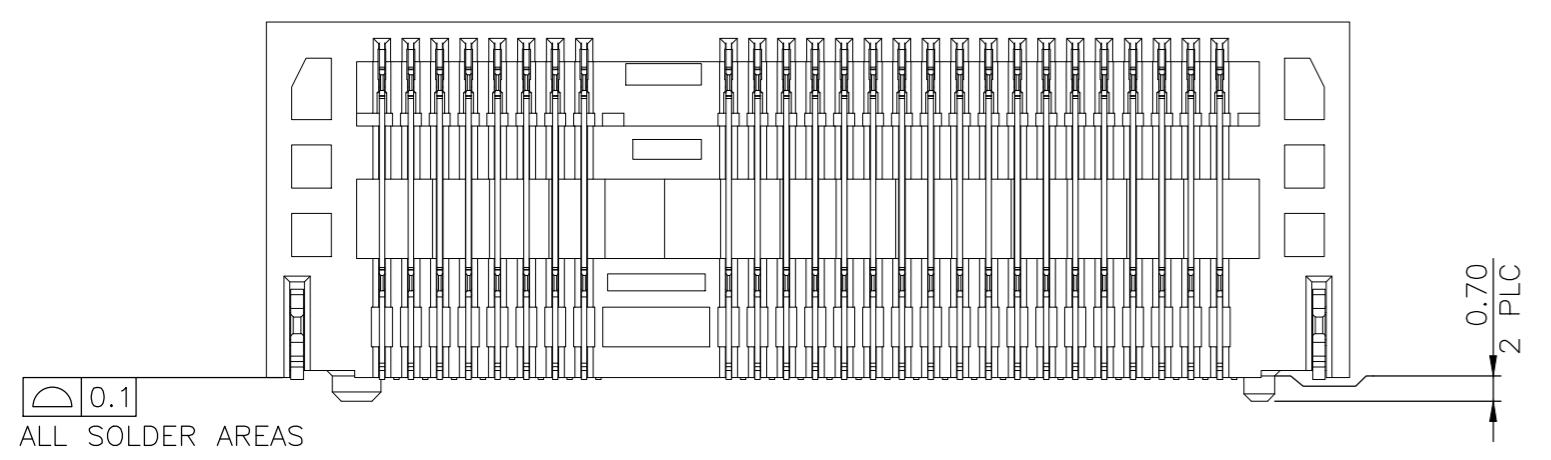
MECHANICAL KEY

|    |         |    |           |
|----|---------|----|-----------|
| 15 | GND     | 16 | UIM_VPP   |
| 13 | REFCLK+ | 14 | UIM_RESET |
| 11 | REFCLK- | 12 | UIM_CLK   |
| 9  | GND     | 10 | UIM_DATA  |
| 7  | CLKREQ# | 8  | UIM_PWR   |
| 5  | COEX2   | 6  | 1.5V      |
| 3  | COEX1   | 4  | GND       |
| 1  | WAKE#   | 2  | 3.3Vaux   |

MECHANICAL KEY

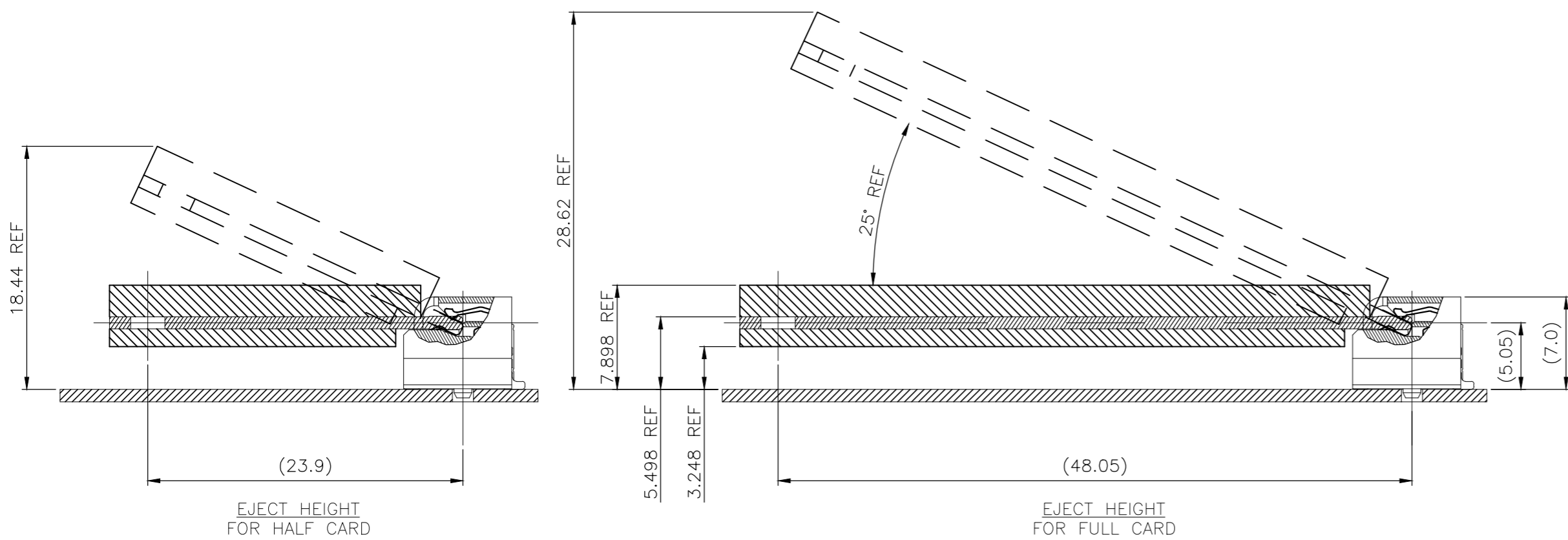
|    |          |    |          |
|----|----------|----|----------|
| 15 | GND      | 16 | Reserved |
| 13 | Reserved | 14 | Reserved |
| 11 | Reserved | 12 | Reserved |
| 9  | GND      | 10 | Reserved |
| 7  | Reserved | 8  | Reserved |
| 5  | Reserved | 6  | +1.5V    |
| 3  | Reserved | 4  | GND      |
| 1  | Reserved | 2  | +3.3V    |

\* Reserved for future UIM interface (if needed)

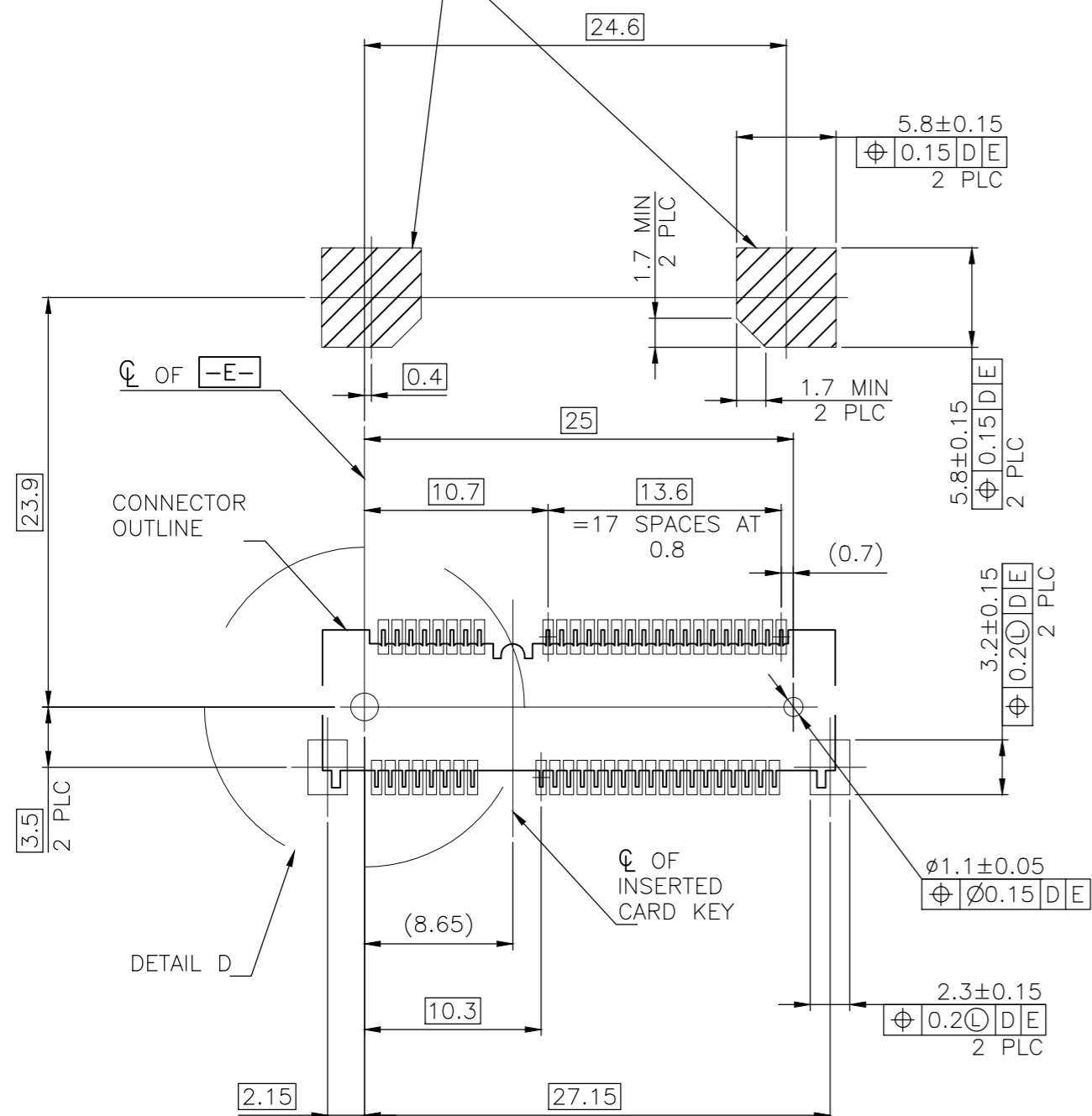


|  |  |                                |   |                          |
|--|--|--------------------------------|---|--------------------------|
| THIS DRAWING IS A CONTROLLED DOCUMENT.   |  | DWN<br>A. WU<br>050CT2011      | GOLD FLASH<br>1759546-1   |                          |
| DIMENSIONS:<br>mm  |  | CHK<br>S. CHIEN<br>050CT2011   | MIN. GOLD THICKNESS<br>PART NUMBER                                    |                          |
| TOLERANCES UNLESS OTHERWISE SPECIFIED:<br>0 PLC ± -<br>1 PLC ± 0.3<br>2 PLC ± 0.2<br>3 PLC ± -<br>4 PLC ± -<br>ANGLES ± 3° |  | APVD<br>W. KODAMA<br>050CT2011 | TE Connectivity   |                          |
| MATERIAL<br>SEE NOTE   |  | FINISH<br>SEE NOTE             | NAME<br>2 IN 1 mSATA & PCI EXPRESS MINI CARD CONNECTOR, 9.9 MM HEIGHT |                          |
| WEIGHT<br>2.95 GRAMS   |  | SIZE<br>A2                     | CAGE CODE<br>00779  | DRAWING NO.<br>C=1759546 |
| CUSTOMER DRAWING   |  | SCALE<br>-                     | SHEET<br>1 of 5   | REV<br>C                 |

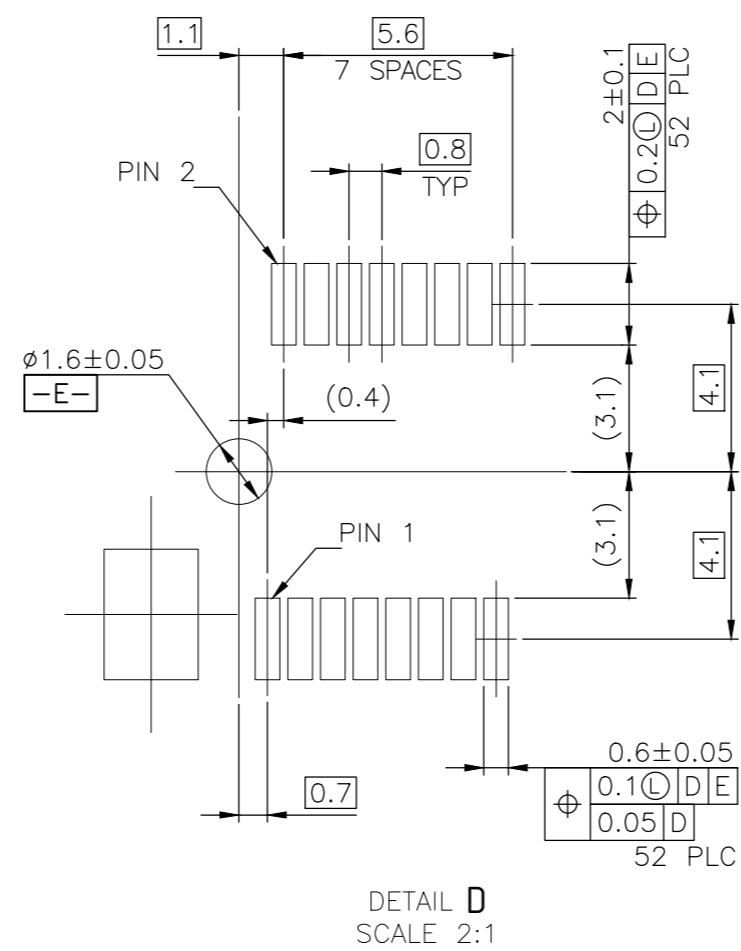
| REVISIONS |     |             |      |      |
|-----------|-----|-------------|------|------|
| P         | LTR | DESCRIPTION | DATE | APVD |
|           |     | SEE SHEET 1 | -    | -    |



COMPONENT KEEP OUT AREA FOR CARD HOLD DOWN SOLUTION

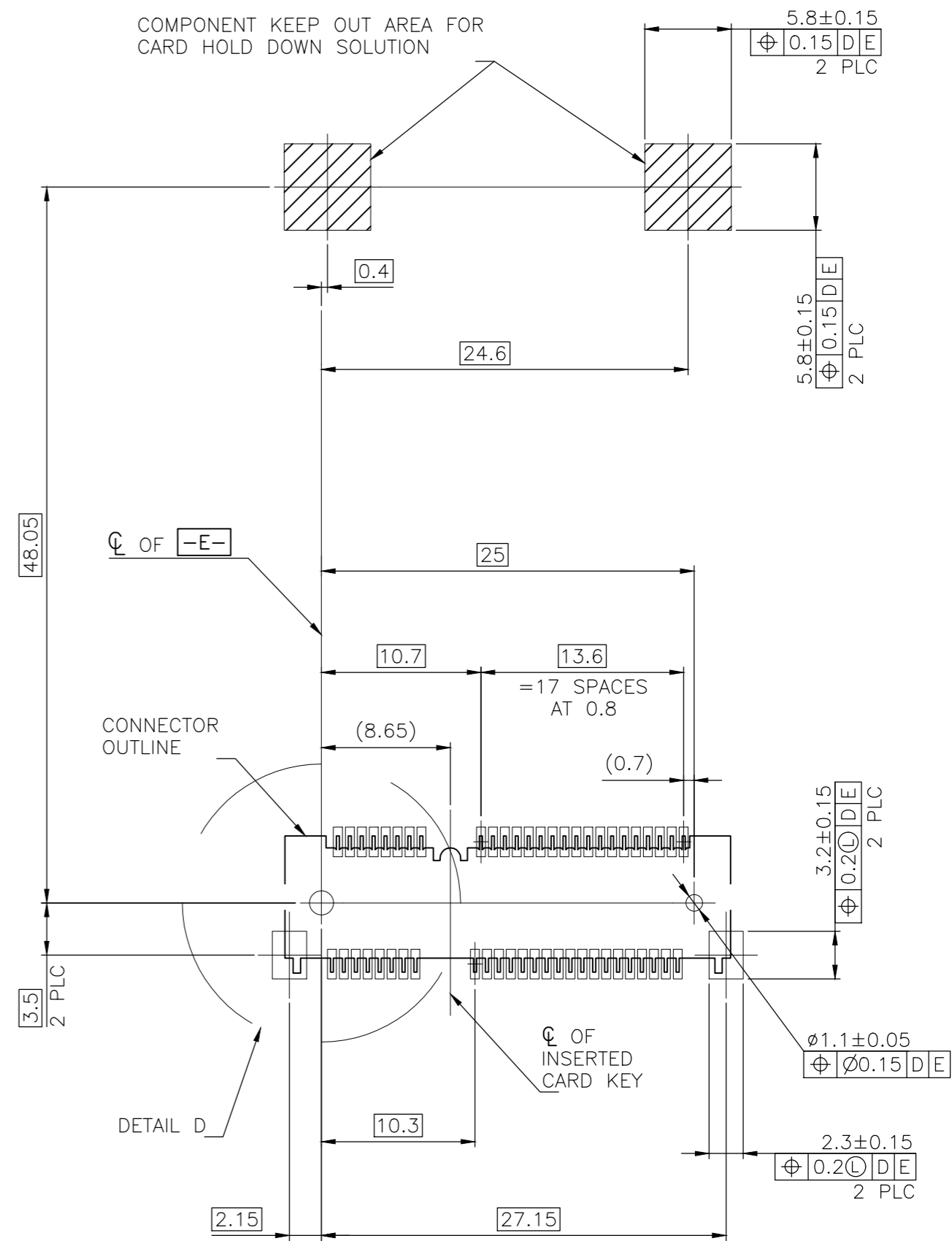


-D- IS THE TOP SURFACE OF PCB.  
 RECOMMENDED P.C. BOARD PATTERN LAYOUT  
 FOR HALF CARD CONNECTOR  
 (TOP VIEW)



DETAIL D  
 SCALE 2:1

COMPONENT KEEP OUT AREA FOR CARD HOLD DOWN SOLUTION

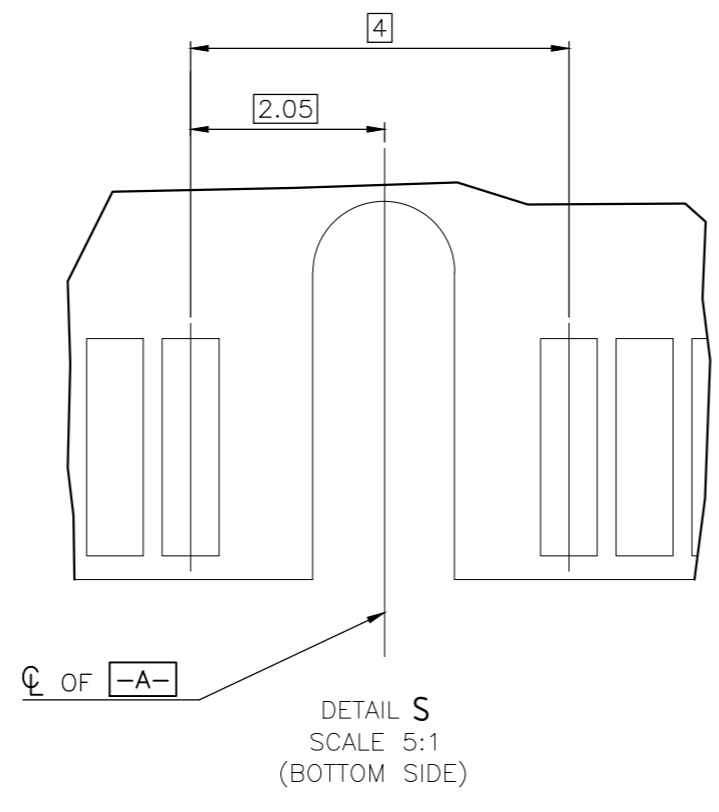
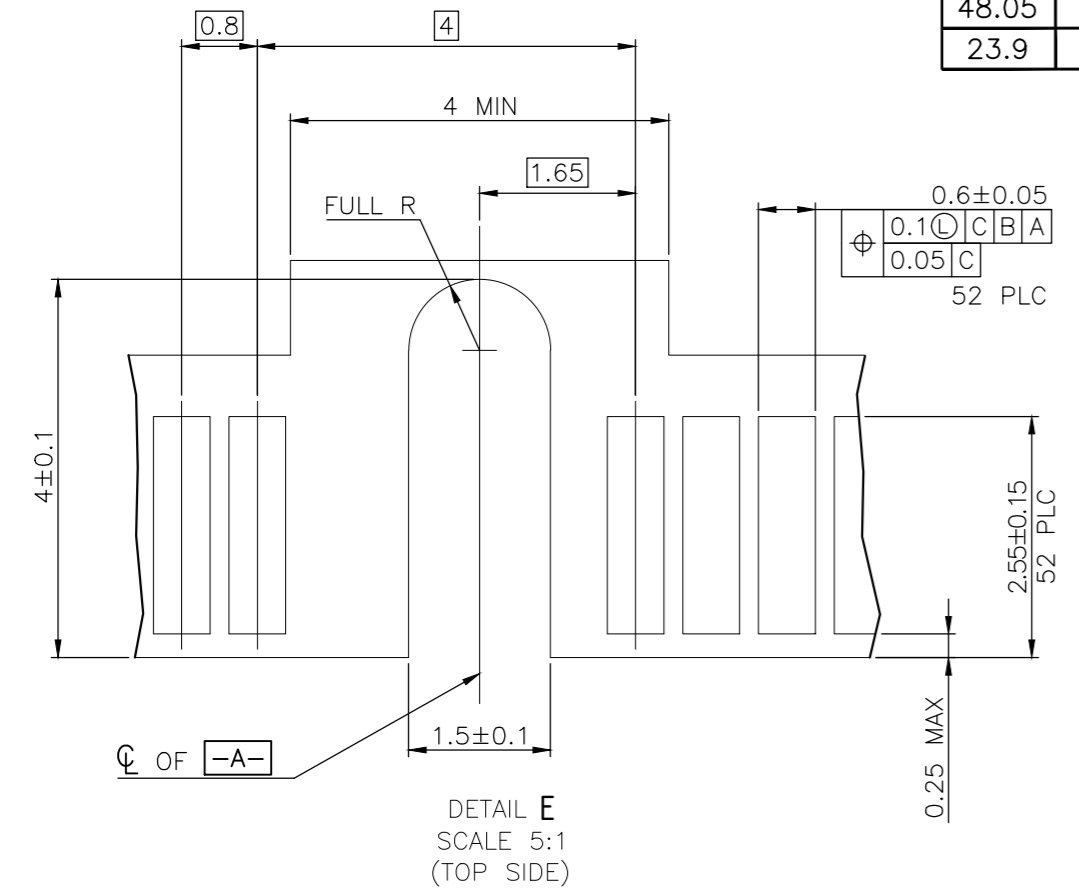
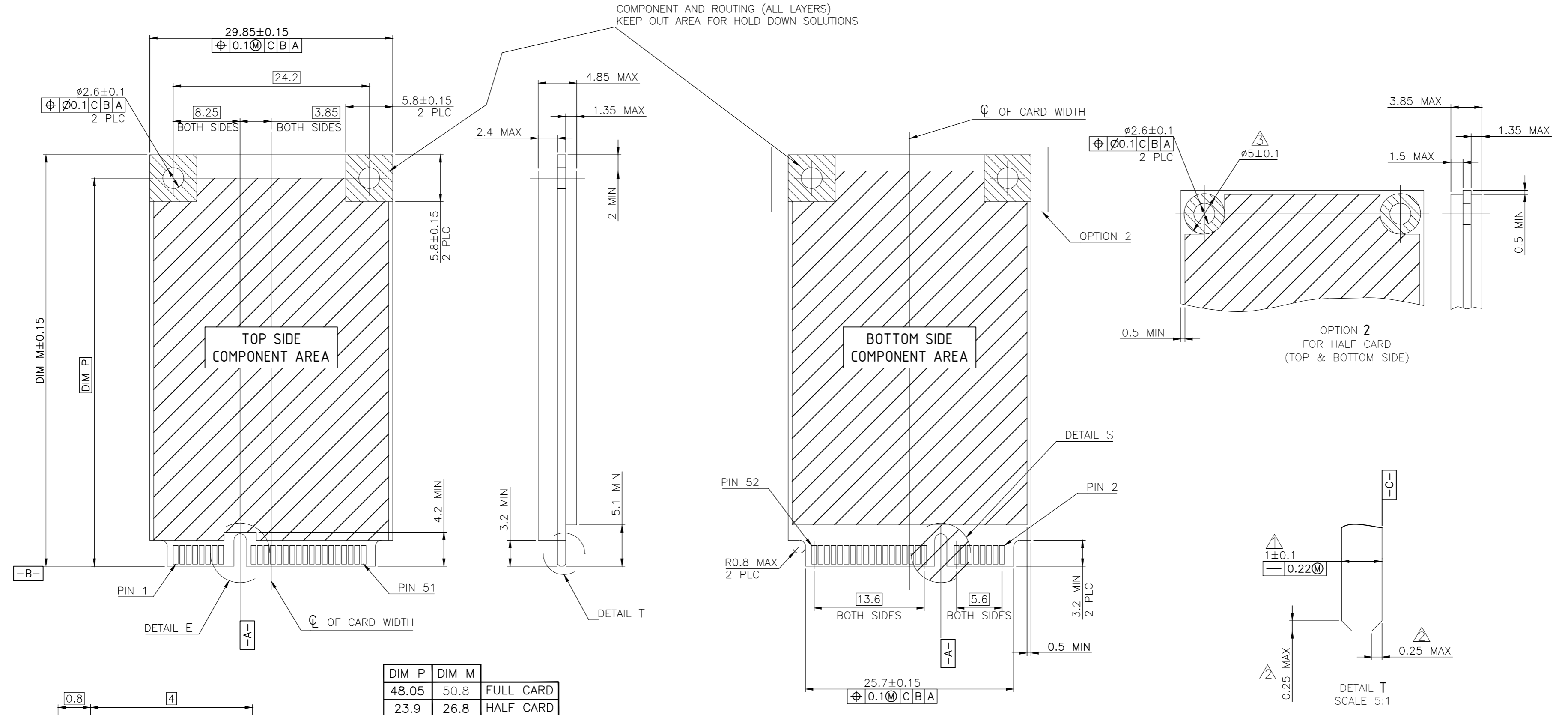


-D- IS THE TOP SURFACE OF PCB.  
 RECOMMENDED P.C. BOARD PATTERN LAYOUT  
 FOR FULL CARD CONNECTOR  
 (TOP VIEW)

|  |     |                  |           |     |   |
|--|-----|------------------|-----------|-----|---|
| THIS DRAWING IS A CONTROLLED DOCUMENT. |     | DWN              | 31MAY2016 |     | <b>TE</b> TE Connectivity                                     |
| DIMENSIONS: mm                         |     | CHK              | -         |     |   |
| TOLERANCES UNLESS OTHERWISE SPECIFIED: |     | APVD             | -         |     | NAME  |
| 0 PLC                                  | ± - | PRODUCT SPEC     | -         |     | 2 IN 1 mSATA & PCI EXPRESS MINI CARD CONNECTOR, 9.9 MM HEIGHT |
| 1 PLC                                  | ± - | APPLICATION SPEC | -         |     |   |
| 2 PLC                                  | ± - | WEIGHT           | -         |     | SIZE  |
| 3 PLC                                  | ± - | CUSTOMER DRAWING | -         |     | CAGE CODE   |
| 4 PLC                                  | ± - |                  | -         |     | DRAWING NO  |
| ANGLES                                 | ± - |                  | -         |     | RESTRICTED TO   |
| FINISH                                 | -   |                  | -         |     | A2 00779 C=1759546  |
|  |     | SCALE            | -         |     | SHEET   |
|  |     |                  |           | 2   | 5   |
|  |     |                  |           | REV | C   |



| REVISIONS |     |             |      |      |
|-----------|-----|-------------|------|------|
| P         | LTR | DESCRIPTION | DATE | APVD |
|           |     | SEE SHEET 1 | -    | -    |



- NOTES:
- ▲ CARD THICKNESS APPLIES ACROSS TABS AND INCLUDES PLATING AND/OR METALLIZATION.
  - ▲ EDGE BEVEL MUST BE PRESENT AND FREE OF CUTTING BURRS FROM PCB AND CONTACT MATERIALS.
  - ▲ COMPONENT AND ROUTING (TOP/BOTTOM LAYER) KEEP OUT AREA FOR HOLD DOWN SOLUTIONS.

FOR mSATA

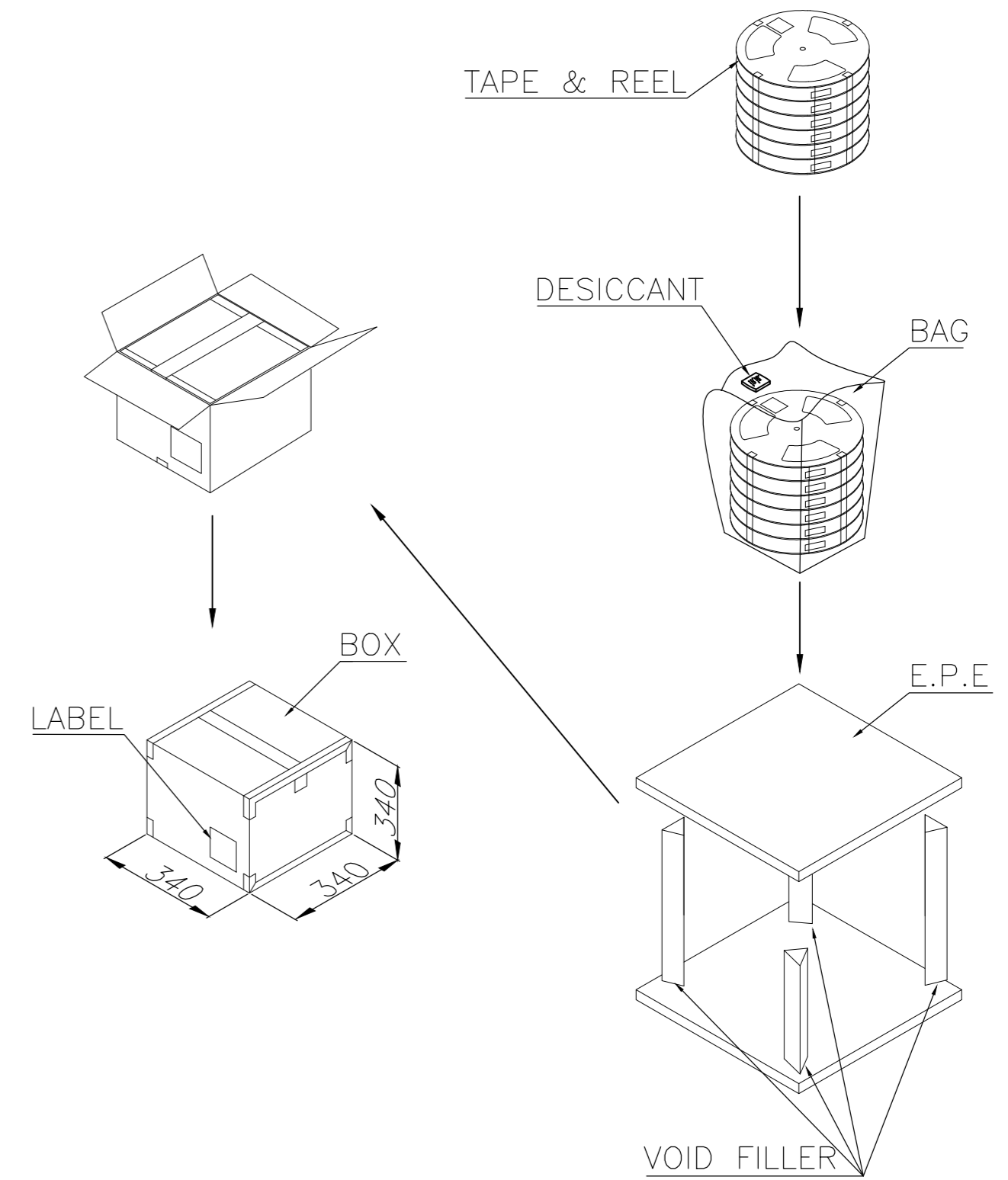
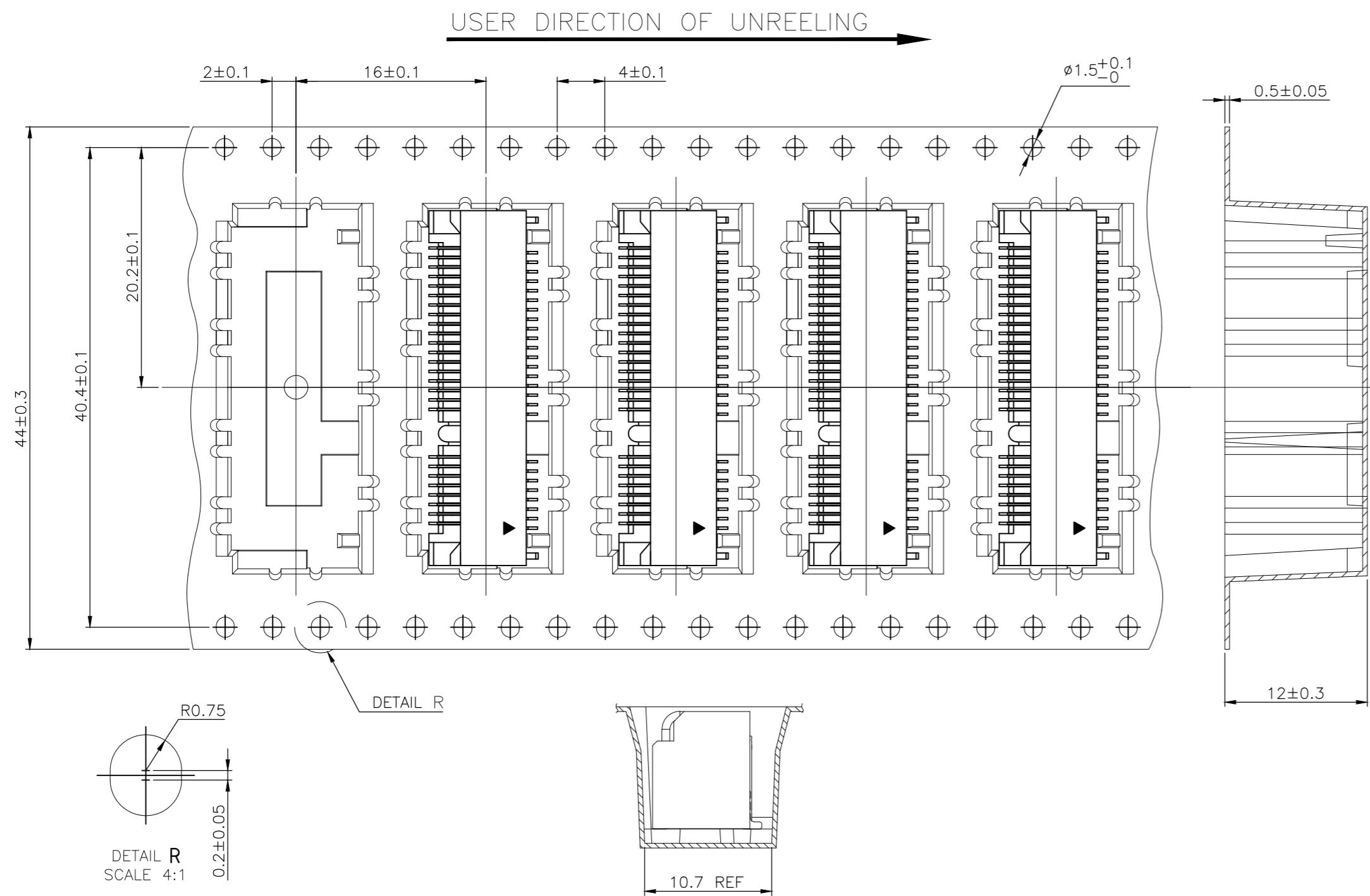
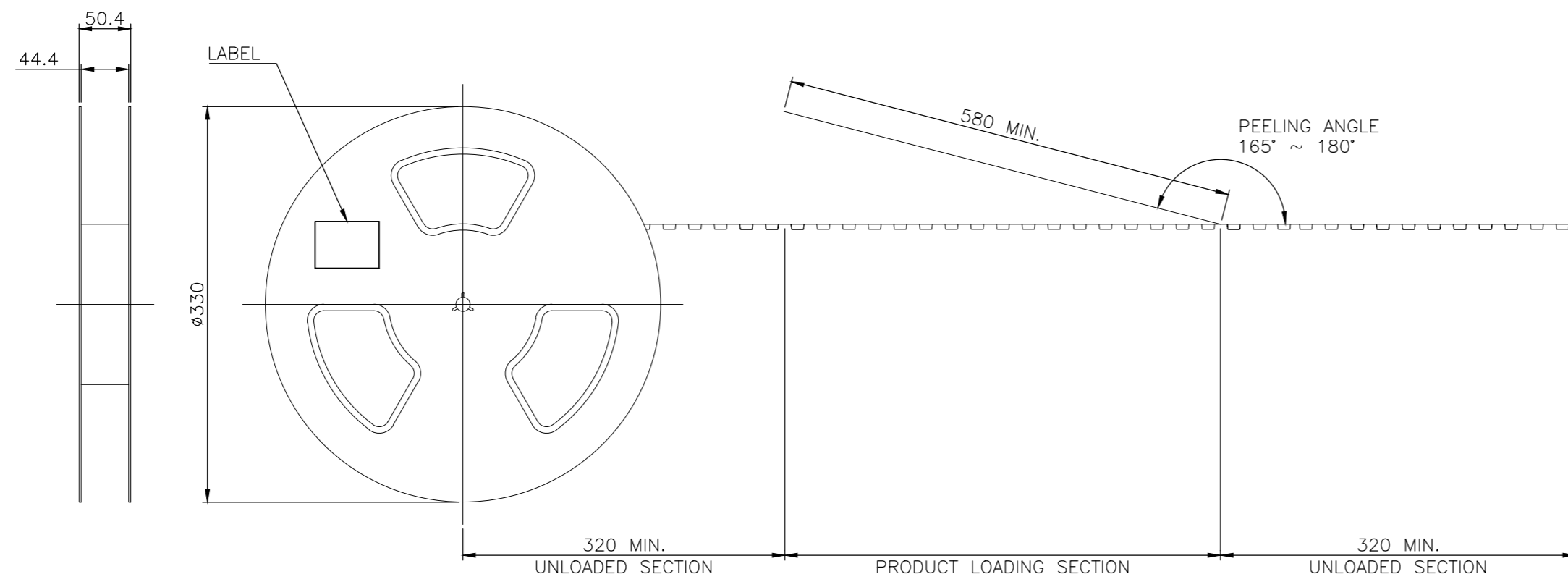
|  |     |                  |           |   |               |
|--|-----|------------------|-----------|---|---------------|
| THIS DRAWING IS A CONTROLLED DOCUMENT. |     | DWN              | 31MAY2016 | <b>TE</b> TE Connectivity                                     |               |
| DIMENSIONS: mm                         |     | CHK              | -         |   |               |
| TOLERANCES UNLESS OTHERWISE SPECIFIED: |     | APVD             | -         | NAME  |               |
| 0 PLC                                  | ± - | PRODUCT SPEC     | -         | 2 IN 1 mSATA & PCI EXPRESS MINI CARD CONNECTOR, 9.9 MM HEIGHT |               |
| 1 PLC                                  | ± - | APPLICATION SPEC | -         | SIZE  | CAGE CODE     |
| 2 PLC                                  | ± - |                  |           | A2  | 00779         |
| 3 PLC                                  | ± - |                  |           | DRAWING NO  | RESTRICTED TO |
| 4 PLC                                  | ± - |                  |           | C=1759546   | -             |
| ANGLES                                 | ± - | WEIGHT           | -         | SCALE   | SHEET         |
| FINISH                                 | -   | CUSTOMER DRAWING | -         | -   | 4 OF 5        |
|  |     |                  |           | REV   | C             |

THIS DRAWING IS UNPUBLISHED. RELEASED FOR PUBLICATION  
 © COPYRIGHT 2011 BY TE CONNECTIVITY. ALL RIGHTS RESERVED.

| REVISIONS |     |             |      |      |
|-----------|-----|-------------|------|------|
| P         | LTR | DESCRIPTION | DATE | APVD |
|           |     | SEE SHEET 1 | -    | -    |

NOTES:

- MATERIAL:  
 BOX: FIBREBOARD, CORRUGATED, DOUBLE WALL.  
 COVER TAPE: POLYSTYRENES, TRANSPARENT COLOR.  
 CARRIER TAPE: POLYSTYRENES, TRANSPARENT COLOR.  
 REEL: HIPS, BLUE COLOR.  
 BAG: POLYETHYLENES, TRANSPARENT .
- EACH BAG SHALL BE INCLUDED DESICCANT.
- PEELING STRENGTH: 0.1 ~ 1.3 N (10 ~ 130 GRAMS).
- PEELING SPEED: 300 mm/min.



|              |            |          |           |         |
|--------------|------------|----------|-----------|---------|
| 10.31 Kg     | 5.31 Kg    | 350      | 6         | 2100    |
| GROSS WEIGHT | NET WEIGHT | PCS/TAPE | REELS/BOX | PCS/BOX |

|  |  |                  |           |  |
|--|--|------------------|-----------|--|
| THIS DRAWING IS A CONTROLLED DOCUMENT. |  | DWN              | 31MAY2016 |  |
| DIMENSIONS: mm                         |  | CHK              | -         |  |
| TOLERANCES UNLESS OTHERWISE SPECIFIED: |  | APVD             | -         |  |
| 0 PLC ± -                              |  | PRODUCT SPEC     | -         |  |
| 1 PLC ± -                              |  | APPLICATION SPEC | -         |  |
| 2 PLC ± -                              |  | WEIGHT           | -         |  |
| 3 PLC ± -                              |  | CUSTOMER DRAWING | -         |  |
| 4 PLC ± -                              |  | SCALE            | -         |  |
| ANGLES ± -                             |  | SHEET            | 5 of 5    |  |
| FINISH -                               |  | REV              | C         |  |

TE Connectivity

2 IN 1 mSATA & PCI EXPRESS MINI CARD CONNECTOR, 9.9 MM HEIGHT

RESTRICTED TO

A2 00779 C=1759546