

| ATLANTIC VERSION TERMINATOR INTERFACE ADAPTER | PART NUMBER | REVISION | DESCRIPTION | FEED TYPE | APPLICATOR STYLE CONVERSION CHART | | | | | | |
|---|-------------|----------|--------------------------|--------------------------------|-----------------------------------|-----------------------|-----------|-------------|-----------|-----------|------------------------|
| | | | | | CONVERT TO | PART NUMBERS REQUIRED | | | | | |
| | 2151808-2 | B | FINE CRIMP HEIGHT ADJUST | PNEUMATIC | - | 1338685-1 | 5-18022-5 | - | - | - | |
| | 2151808-5 | B | FINE CRIMP HEIGHT ADJUST | SERVO LATCH PLATE ⁴ | SERVO LATCH PLATE | 2119951-1 | - | 8-2151808-5 | 1901094-3 | - | 2168400-6 (QUANTITY 2) |
| | | | | | SMART APPLICATOR | 2161326-1 | - | 8-2151808-4 | - | - | |
| | 2151808-6 | B | NON-CRIMP HEIGHT ADJUST | SERVO LATCH PLATE ⁴ | PNEUMATIC FEED | 2119950-1 | 1338685-1 | 5-18022-5 | 2119641-1 | 2119799-1 | 2063440-1 |
| | | | | | - | - | - | - | - | - | |
| | 2151808-7 | B | FINE CRIMP HEIGHT ADJUST | NONE | - | - | - | - | - | - | - |
| | 7-2151808-7 | A | CRIMP TOOLING KIT | - | - | - | - | - | - | - | - |

| APPLICATOR DATA | | |
|-----------------|----------------|------|
| CRIMP | SIZE | TYPE |
| WIRE | 1.58 mm [.062] | F |
| INSUL | 2.30 mm [.091] | F |

APPLICATOR INSTRUCTIONS 408-10389

| TERMINAL DATA: TE TERMINAL | | TE CRIMP SPECIFICATION | |
|-------------------------------------|--------------|------------------------------|-------------|
| TERMINAL NAME: JUNIOR-TIMER CONTACT | | | |
| WIRE STRIP LENGTH | | INSULATION DIAMETER RANGE | |
| 3.40-4.00 mm [.134-.157 IN] | | Ø1.20-1.60 mm [.047-.063 IN] | |
| TERMINAL APPLICATION SPECIFICATION | (A)114-18079 | - | - |
| TERMINALS APPLIED | | - | - |
| TE TERMINAL | TE TERMINAL | TE TERMINAL | TE TERMINAL |
| (A) 927871-1 | (A) 927871-2 | (A) 927871-4 | |

| TERMINAL DATA: TE TERMINAL | | TE CRIMP SPECIFICATION | |
|-------------------------------------|--------------|------------------------------|-------------|
| TERMINAL NAME: JUNIOR-TIMER CONTACT | | | |
| WIRE STRIP LENGTH | | INSULATION DIAMETER RANGE | |
| 3.40-4.00 mm [.134-.157 IN] | | Ø1.00-1.60 mm [.039-.063 IN] | |
| TERMINAL APPLICATION SPECIFICATION | (A)114-18079 | - | - |
| TERMINALS APPLIED | | - | - |
| TE TERMINAL | TE TERMINAL | TE TERMINAL | TE TERMINAL |
| (B) 926984-1 | (B) 926984-2 | (B) 1-926984-1 | |

| WIRE SIZE | CRIMP HEIGHT mm [INCH] | CRIMP HEIGHT REFERENCE SETTING |
|-----------|----------------------------|--------------------------------|
| 0.50mm2 | 1.06+/-0.05 [.042+/- .002] | 6.9 |
| 0.37mm2 | 0.99+/-0.05 [.039+/- .002] | 7.8 |
| 0.25mm2 | 0.93+/-0.05 [.037+/- .002] | 8.2 |
| 0.20mm2 | 0.91+/-0.05 [.036+/- .002] | 8.4 |

| WIRE SIZE | CRIMP HEIGHT mm [INCH] | CRIMP HEIGHT REFERENCE SETTING |
|-----------|----------------------------|--------------------------------|
| 0.50mm2 | 1.06+/-0.05 [.042+/- .002] | 6.9 |
| 0.37mm2 | 0.99+/-0.05 [.039+/- .002] | 7.8 |
| 0.25mm2 | 0.93+/-0.05 [.037+/- .002] | 8.2 |
| 0.20mm2 | 0.91+/-0.05 [.036+/- .002] | 8.4 |

- RECOMMENDED SPARE PARTS
- GREASE BEARING SURFACES LIGHTLY
- 3. LUBRICATE DAILY PER THE APPLICATOR INSTRUCTION SHEET SUPPLIED WITH THE APPLICATOR.
- APPLICATOR SPECIFIC DATA TO BE ENTERED INTO BLANK MEMORY CHIP AT ASSEMBLY. SEE BELOW FOR PART NUMBER:
 PNEUMATIC FEED WITH "SMART APPLICATOR" CONVERSION: 8-2151808-4
 SERVO FEED WITH "FINE CRIMP HEIGHT ADJUST": 8-2151808-5
 SERVO FEED WITH "NON-CRIMP HEIGHT ADJUST": 8-2151808-6
- 5. ADJUSTMENT OF THE STRIPPER MAY BE REQUIRED WHEN MOVING THE APPLICATOR BETWEEN BENCH AND LEADMAKER APPLICATIONS.
- APPLY PART NUMBER 1-23419-5 LOCTITE TO THREADS OF ITEMS 50 & 62. APPLY PART NUMBER 2-23419-6 LOCTITE TO THREADS OF ITEM 242. FOR -6 ONLY APPLY PART NUMBER 1-23419-5 LOCTITE TO THREADS OF ITEMS 37, 50 & 242.
- GREASE THREADS, GROOVE AND O-RING ON ITEMS 35 & 252.
- MAGNET, ITEM 166 MUST BE ORIENTED CORRECTLY IN ORDER TO PROPERLY ACTUATE THE COUNTER.
- CRIMP HEIGHT REFERENCE SETTING WAS THE SETTING USED WHEN THE APPLICATOR WAS QUALIFIED AT THE FACTORY. ADJUSTMENT MAY BE NECESSARY WHEN RUNNING APPLICATOR IN THE FIELD.
- TERMINAL PITCH NOT COMPATIBLE WITH MECHANICAL FEED.
- TO CONVERT THE APPLICATOR TO A NON-CARRIER CUTTING STYLE, REMOVE ITEM 13 AND ATTACH TO THE LOCATION ON THE BACK SIDE OF THE HOUSING. REFER TO INSTRUCTION SHEET FOR ADDITIONAL INFORMATION.
- WHEN ASSEMBLING A NON CRIMP HEIGHT ADJUST APPLICATOR (-6) USE SHIMS FROM ITEM 260 TO ACHIEVE A NOMINAL SHIM HEIGHT OF 4.74.
- TERMINAL LUBRICANT IS RECOMMENDED.

***WARNING**
 ON INSTALLATION, SET WIRE DISC, ITEM 40 TO LARGEST WIRE SIZE SETTING. USE OF SETTINGS BELOW MINIMUM REQUIRED CRIMP HEIGHT SETTING WILL CAUSE DAMAGE TO CRIMP TOOLING.

| | | | | | | | | |
|--|-----|----|----|----|----|-----------|---------------------------------|---------|
| | - | - | 1 | - | - | 2119957-2 | APPLICATOR SHIM PACK | 260 |
| | - | 1 | - | 1 | 1 | 8-21084-0 | O-RING, .676 ID, .070 DIA. MAT. | 252 |
| | - | - | - | - | 1 | 2119640-1 | PUSH ROD, AIR FEED | 250 |
| | -77 | -7 | -6 | -5 | -2 | PART NO | DESCRIPTION | ITEM NO |

ATLANTIC VERSION
 Shown on sheets 1 of 4 & 2 of 4
 (Pacific version shown on sheets 3 of 4 & 4 of 4)

| SET UP GAUGE | LOC | DIST | REVISIONS | | | | | |
|--------------|-----|------|-----------|-----|---------------|-----------|-----|------|
| 2119599-1 | A | 66 | # | LTN | DESCRIPTION | DATE | OWN | APVD |
| | | | 1 | | ORIGINAL | 08NOV2012 | GH | TE |
| | | | A | | RELEASED | 02JAN2013 | GH | TE |
| | | | B | | ECR-17-005521 | 17APR2017 | TB | TE |

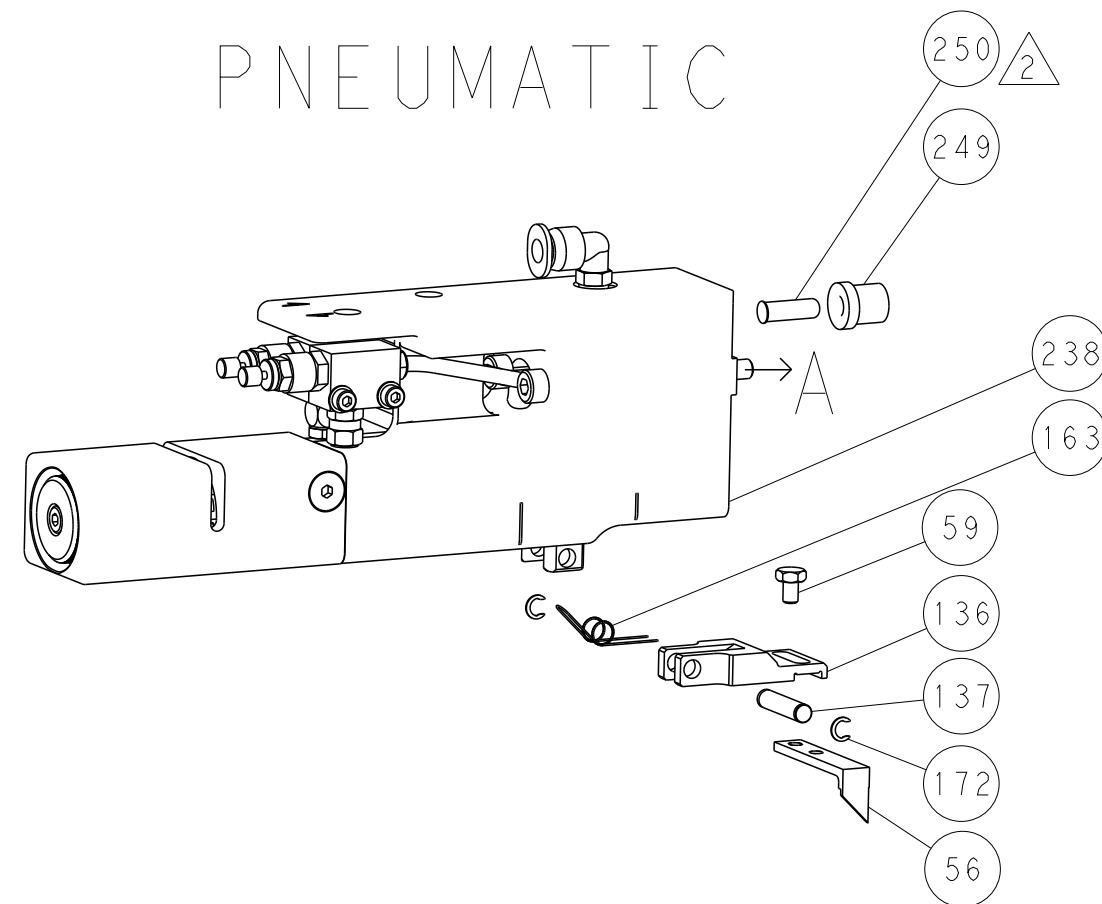
| | | | | | | | | |
|---|-----|-----|-----|-----|-------------|-------------------------------------|-------------|---------|
| - | - | - | - | 1 | 1803259-1 | BUSHING, FLANGED | 249 | |
| - | - | - | - | 1 | 2119641-1 | FEED CAM, AIR FEED | 248 | |
| - | 1 | - | 1 | 1 | 2119798-1 | DETENT PIN | 247 | |
| - | 1 | - | 1 | 1 | 1-22279-3 | SPRING, COMPRESSION | 246 | |
| - | - | 1 | - | - | 2119758-1 | RAM, AMP STYLE, SIDE FEED, NON-ADJ. | 245 | |
| - | 1 | 1 | 1 | 1 | 2119082-8 | CAM, SNAIL, INSULATION ADJUSTMENT | 244 | |
| - | 1 | 1 | 1 | 1 | 2079764-1 | WASHER, WAVE SPRING, CREST-TO-CREST | 243 | |
| | - | 1 | 1 | 1 | 2119083-1 | RETAINER, INSULATION DIAL | 242 | |
| - | 1 | 1 | 1 | 1 | 7-18023-7 | SCR, SKT HD CAP M3 X 4.0 | 241 | |
| - | - | 2 | 2 | - | 2168400-6 | SHCS, LOW HEAD, RoHS, M5 X 16 | 240 | |
| - | - | - | - | 1 | 2063440-1 | AIR FEED MODULE | 238 | |
| - | - | 1 | 1 | - | 2119740-2 | TAG, IDENTIFICATION | 213 | |
| - | - | 1 | 1 | - | 1901094-3 | SPACER, FEEDER | 198 | |
| - | 1 | 1 | 1 | 1 | 993111-1 | PIN, SLOTTED SPRING 3.0 X 20.0 | 177 | |
| - | 1 | 1 | 1 | 1 | 8-22280-7 | SPRING, COMPRESSION | 176 | |
| - | 1 | 1 | 1 | 1 | 1752353-2 | GUIDE PIN, HOLDDOWN | 175 | |
| - | 1 | 1 | 1 | 1 | 1901680-2 | GUIDE PIN, HOLDDOWN | 174 | |
| - | - | - | - | 2 | 21045-3 | RING, RETAIN, EXTERN, 3/16 CRESCENT | 172 | |
| - | 1 | 1 | 1 | 1 | 994969-1 | MAGNET, RARE EARTH HIGH ENERGY | 166 | |
| - | REF | REF | REF | REF | 994970-2 | COUNTER, MAGNETIC | 164 | |
| - | - | - | - | 1 | 240638-1 | SPRING, FEED FINGER | 163 | |
| - | - | - | - | 1 | 3-23627-7 | PIN, RETAIN, GRVD, 3/16 X .854 | 137 | |
| - | - | - | - | 1 | 2119799-1 | HOLDER, FEED FINGER, AF | 136 | |
| - | - | REF | REF | - | SEE NOTE 4 | MEMORY CHIP, PROGRAMMED | 135 | |
| - | - | 1 | 1 | - | 1633743-1 | SERVO FEED LATCH ASM | 133 | |
| - | 1 | 1 | 1 | 1 | 1-18028-2 | WASHER, FLAT, REG M4 | 119 | |
| - | - | REF | REF | - | 2119944-1 | FEED FINGER ASSEMBLY, SF | 117 | |
| | - | 1 | 1 | 1 | 2119955-1 | ASSY, LUBRICATOR, SIDE FEED | 113 | |
| - | 1 | 1 | 1 | 1 | 455888-5 | SPACER, CRIMPER | 82 | |
| - | 1 | 1 | 1 | 1 | 2119956-1 | DOCUMENTATION PACKAGE | 71 | |
| - | 1 | - | - | 1 | 2119740-1 | TAG, IDENTIFICATION | 67 | |
| - | 2 | 2 | 2 | 2 | 2168078-1 | SCREW, DRIVE, RH, RoHS, 2 x .188 | 66 | |
| - | 1 | - | 1 | 1 | 2119793-1 | LIMITER, ADJUSTMENT BOLT | 63 | |
| | - | 3 | - | 3 | 992763-5 | SCR, SET, SOC, CONE POINT, M3 X 4.0 | 62 | |
| - | 1 | 1 | 1 | 1 | 2079383-4 | SCR, BHSC, RoHS (M4 X 8) | 60 | |
| - | - | - | - | 1 | 5-18022-5 | SCR, HEX HD CAP, M4 X 6.0 | 59 | |
| - | - | - | - | 1 | 1338685-1 | PAWL, FEED | 56 | |
| - | 4 | 4 | 4 | 4 | 2168400-1 | SHCS, LOW HEAD, RoHS, M4 X 12 | 54 | |
| - | 1 | 1 | 1 | 1 | 1-5018030-0 | NUT, HEX, REG, RoHS, M3.5 | 52 | |
| | - | 1 | 1 | 1 | 1901681-1 | HOLDDOWN, TERMINAL | 51 | |
| | - | 1 | 1 | 1 | 2-1752354-0 | STANDOFF, HOLD-DOWN | 50 | |
| - | - | - | - | 1 | 18023-9 | SCR, SKT HD CAP M4 X 6.0 | 49 | |
| - | 1 | 1 | 1 | 1 | 2119656-9 | APPLICATOR BASIC ASSEMBLY, SF | 46 | |
| - | 1 | - | 1 | 1 | 2119370-1 | RAM, AMP STYLE, SIDE FEED | 44 | |
| - | 1 | 1 | 1 | 1 | 2079383-7 | SCR, BHSC, RoHS (M8 X 25) | 41 | |
| - | 1 | - | 1 | 1 | 2119645-1 | DISC, NUMBERED FA WIRE ADJUSTMENT | 40 | |
| - | 1 | - | 1 | 1 | 2119957-1 | APPLICATOR SHIM PACK | 39 | |
| - | 1 | 1 | 1 | 1 | 2119644-1 | RAM WASHER, PRECISION | 38 | |
| | - | 1 | 1 | 1 | 2119085-1 | FA HEAD, ATLANTIC STYLE | 37 | |
| - | 1 | - | 1 | 1 | 2119092-1 | BOLT, ADJUSTMENT | 35 | |
| - | 1 | 1 | 1 | 1 | 1752356-3 | SUPPORT, TERMINAL | 34 | |
| - | 2 | 2 | 2 | 2 | 2079383-5 | SCR, BHSC, RoHS (M4 X 20) | 33 | |
| - | 1 | 1 | 1 | 1 | 2161328-1 | HEX HEAD, FLANGED, M5 X 8mm LONG | 32 | |
| - | 1 | 1 | 1 | 1 | 1320908-3 | SPACER, STRIP GUIDE | 30 | |
| - | 1 | 1 | 1 | 1 | 2119959-1 | ASSEMBLY, STRIP GUIDE | 29 | |
| - | 1 | 1 | 1 | 1 | 1-455888-0 | SPACER, CRIMPER | 28 | |
| - | 1 | 1 | 1 | 1 | 1320928-2 | STRIP GUIDE | 24 | |
| - | 1 | 1 | 1 | 1 | 2168083-2 | SCR, SKT HD CAP, RoHS, M4 X 8.0 | 21 | |
| - | 1 | 1 | 1 | 1 | 1-18028-2 | WASHER, FLAT, REG M4 | 20 | |
| - | 1 | 1 | 1 | 1 | 2119533-1 | STRIPPER, SIDE FEED | 19 | |
| | - | 1 | 1 | 1 | 2119806-1 | INSERT, SHEAR | 13 | |
| - | 1 | 1 | 1 | 1 | 3-22280-3 | SPRING, COMPRESSION | 12 | |
| - | 1 | 1 | 1 | 1 | 1-356885-4 | STOP, SHEAR | 11 | |
| | - | 1 | 1 | 1 | 2119805-1 | SHEAR HOLDER, FRONT | 10 | |
| | - | 1 | 1 | 1 | 462006-6 | FLOATING SHEAR, FRONT | 9 | |
| | 1 | 1 | 1 | 1 | 1-1333202-0 | ANVIL, COMBINATION | 8 | |
| - | - | - | - | - | - | - | 7 | |
| - | - | - | - | - | - | - | 6 | |
| - | 1 | 1 | 1 | 1 | 2119757-5 | DEPRESSOR, SHEAR | 5 | |
| - | 1 | 1 | 1 | 1 | 2-238011-2 | BLOCK, CRIMPER SPACER | 4 | |
| | 1 | 1 | 1 | 1 | 1-2119582-1 | CRIMPER, INSULATION F PREMIUM | 3 | |
| | - | 1 | 1 | 1 | 455888-8 | SPACER, CRIMPER | 2 | |
| | 1 | 1 | 1 | 1 | 1-456403-3 | CRIMPER, WIRE PREMIUM | 1 | |
| | -77 | -7 | -6 | -5 | -2 | PART NO | DESCRIPTION | ITEM NO |

| DIMENSIONS: | | TOLERANCES UNLESS OTHERWISE SPECIFIED: | | DRAWING NO | | RESTRICTED TO | |
|--|---------|--|---------|------------|---------|---------------|------------|
| mm | 0 PLC ± | 1 PLC ± | 2 PLC ± | 3 PLC ± | 4 PLC ± | ANGLES ± | FINISH |
| MATERIAL | | | | WEIGHT | SIZE | CAGE CODE | DRAWING NO |
| - | | | | - | A1 | 00779 | ©=2151808 |
| Customer Accessible Production Drawing | | | | SCALE | SHEET | 1 OF 4 | REV |
| - | | | | 1:2 | | | B |

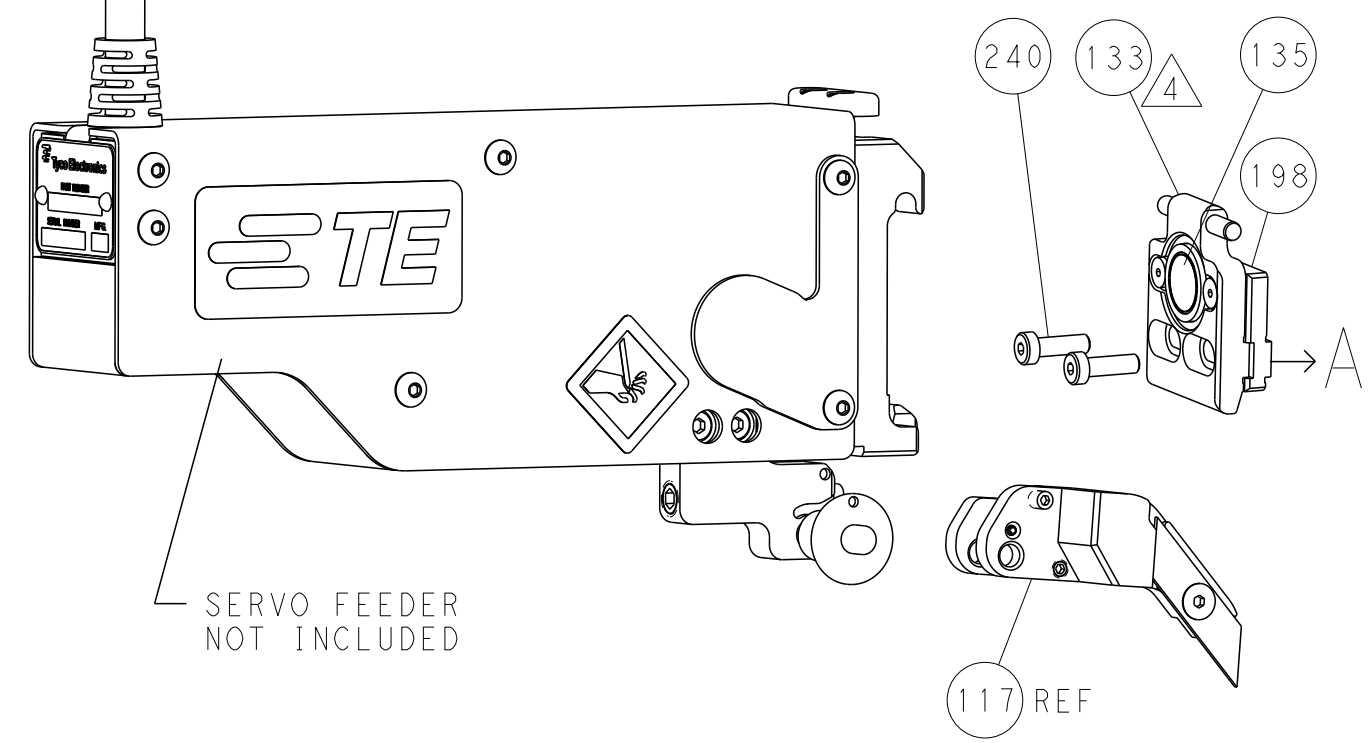
| LOC | | DIST | | REVISIONS | | | | |
|-----|-----|------|-----|-----------|-------------|------|-----|------|
| P | LTN | DATE | DMN | APVD | DESCRIPTION | DATE | DMN | APVD |
| A | 66 | - | - | - | SEE SHEET 1 | - | - | - |

FEED TYPE

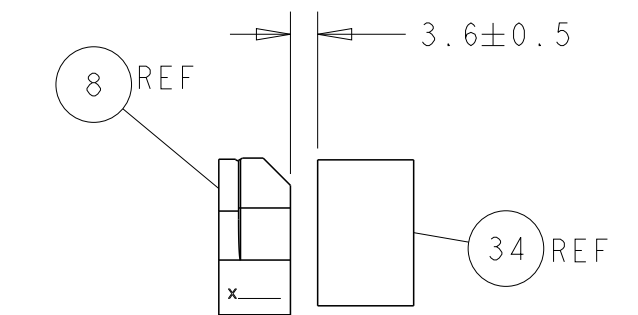
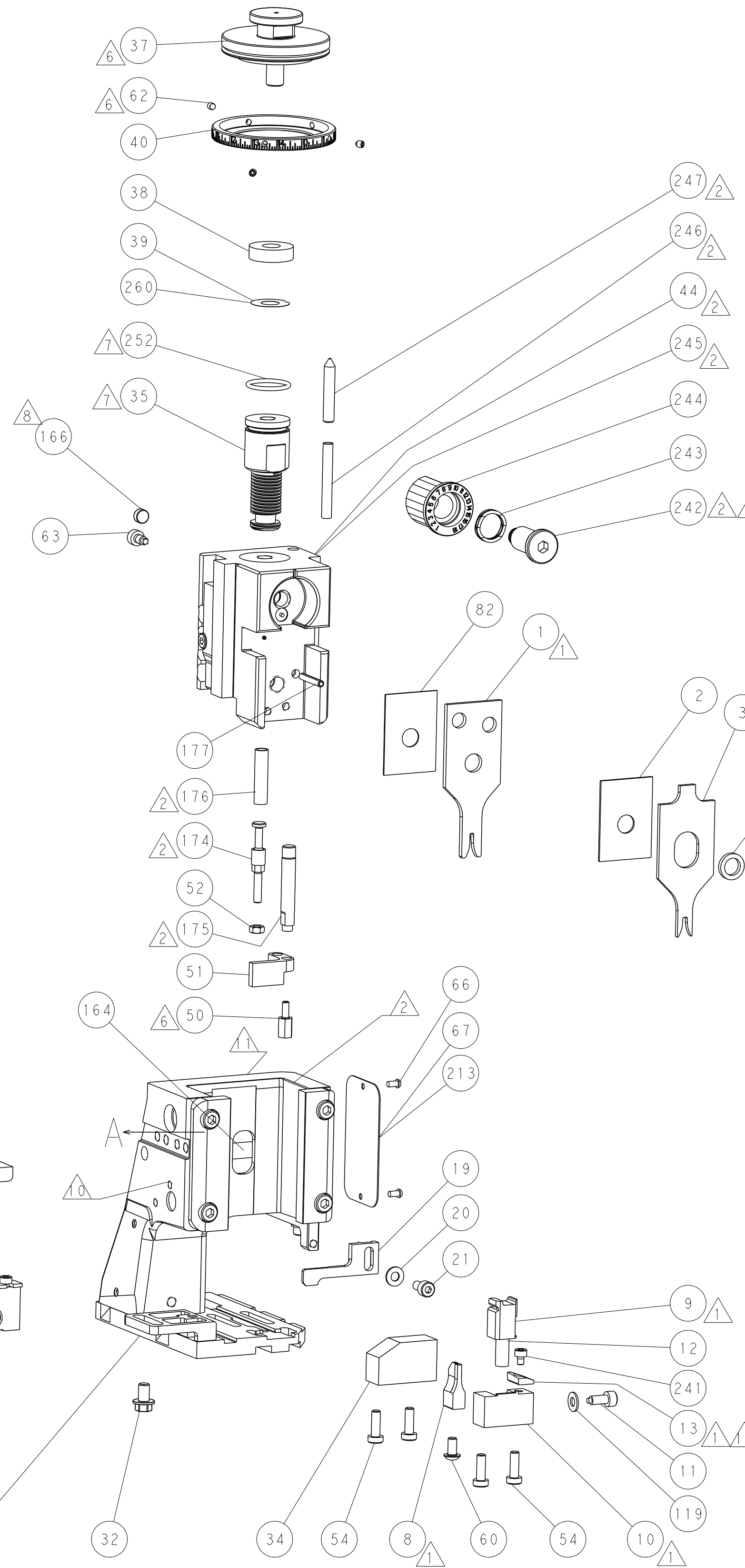
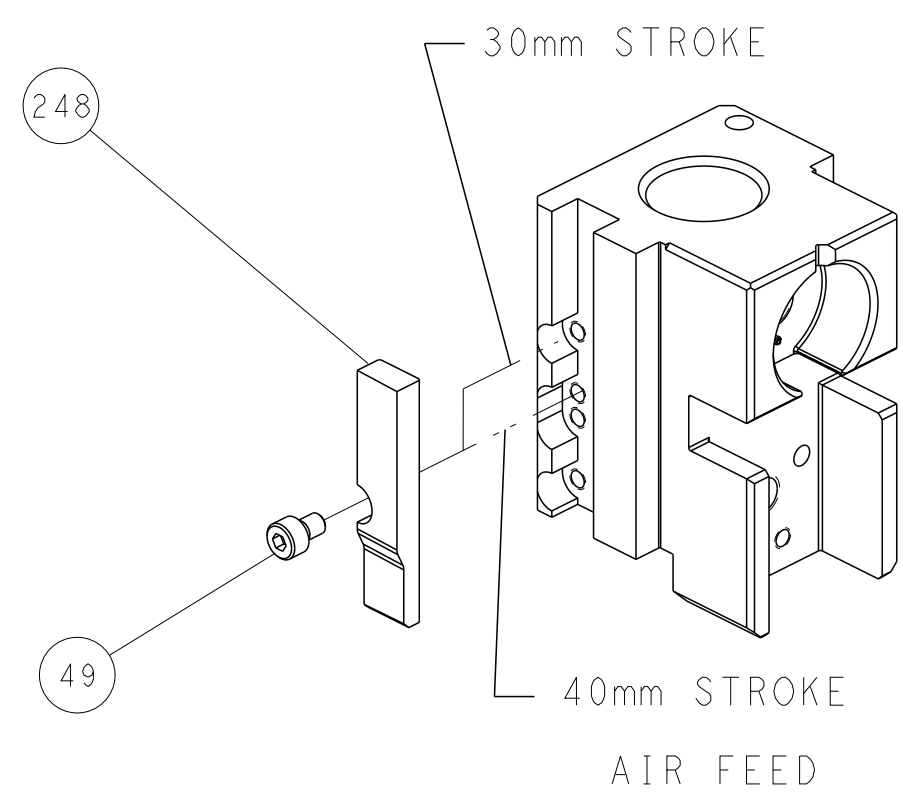
PNEUMATIC



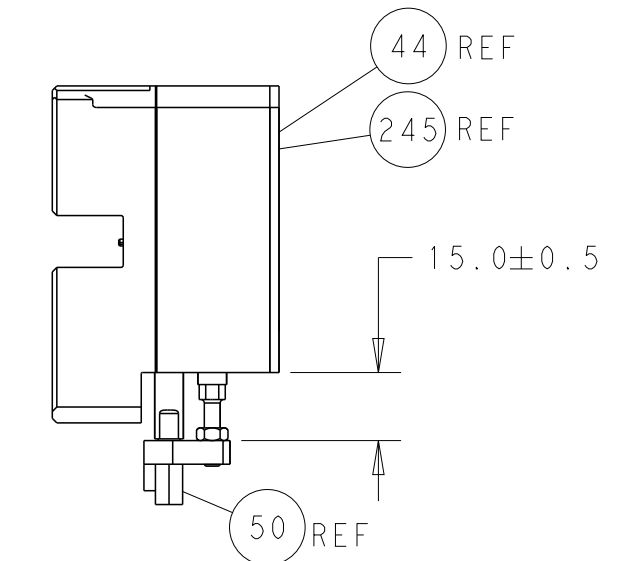
SERVO LATCH PLATE



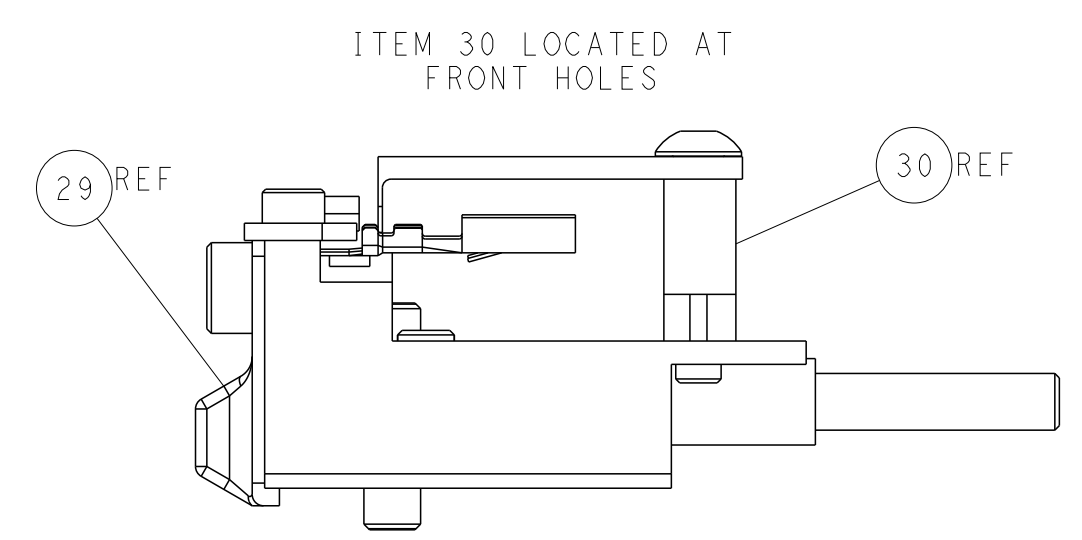
CAM POSITIONS



TERMINAL SUPPORT LOCATION



HOLDDOWN SET-UP



FEED TRACK POSITION GUIDE BY INSULATION BARREL

ATLANTIC VERSION
 Shown on sheets 1 of 4 & 2 of 4
 (Pacific version shown on sheets 3 of 4 & 4 of 4)

| | | | |
|--|---|---|--|
| <small>THIS DRAWING IS UNPUBLISHED. RELEASED FOR PUBLICATION. IT IS THE BUYER'S RESPONSIBILITY TO CONTACT THE SUPPLIER FOR THE LATEST REVISIONS. DIMENSIONS UNLESS OTHERWISE SPECIFIED ARE IN MILLIMETERS.</small> | | DWN: HOFFNER 07NOV2012 CHK: T. ELBIN 08NOV2012 APVD: T. ELBIN 08NOV2012 | TE Connectivity Harrisburg, PA 17105-3608 |
| DIMENSIONS: mm TOLERANCES UNLESS OTHERWISE SPECIFIED: 0 PLC ± 1 PLC ± 2 PLC ± 3 PLC ± 4 PLC ± ANGLES ° ± | NAME: Ocean Side Feed Applicator SIZE: A1 CAGE CODE: 00779 DRAWING NO: 2151808 | PRODUCT SPEC: APPLICATION SPEC: WEIGHT: | RESTRICTED TO: |
| MATERIAL: | | FINISH: | SCALE: 1:2 SHEET: 2 OF 4 REV: B |

| PACIFIC VERSION TERMINATOR INTERFACE ADAPTER | PART NUMBER | REVISION | DESCRIPTION | FEED TYPE | APPLICATOR STYLE CONVERSION CHART | | | | | |
|--|-------------|--------------------------|--------------------------|-------------------|-----------------------------------|-----------------------|-------------|-----------|------------------------|-----------|
| | | | | | CONVERT TO | PART NUMBERS REQUIRED | | | | |
| | 2-2151808-2 | B | FINE CRIMP HEIGHT ADJUST | PNEUMATIC | - | 1338685-1 | 5-18022-5 | - | - | - |
| | | | | | SERVO LATCH PLATE | 2119951-1 | 8-2151808-5 | 1901094-3 | 2168400-6 (QUANTITY 2) | |
| | 2-2151808-5 | B | FINE CRIMP HEIGHT ADJUST | SERVO LATCH PLATE | - | 1338685-1 | 5-18022-5 | - | - | - |
| | | | | | PNEUMATIC FEED | 2119950-1 | 1338685-1 | 5-18022-5 | 2119641-2 | 2119799-1 |
| 2-2151808-7 | B | FINE CRIMP HEIGHT ADJUST | NONE | - | - | - | - | - | - | |
| 7-2151808-7 | A | CRIMP TOOLING KIT | - | - | - | - | - | - | - | |

| APPLICATOR DATA | | |
|--------------------------------------|----------------|------|
| CRIMP | SIZE | TYPE |
| WIRE | 1.58 mm [.062] | F |
| INSUL | 2.30 mm [.091] | F |
| APPLICATOR INSTRUCTIONS 408-10389 | | |

| TERMINAL DATA: TE TERMINAL | | TE CRIMP SPECIFICATION | |
|-------------------------------------|--------------|------------------------------|-------------|
| TERMINAL NAME: JUNIOR-TIMER CONTACT | | | |
| WIRE STRIP LENGTH | | INSULATION DIAMETER RANGE | |
| 3.40-4.00 mm [.134-.157 IN] | | Ø1.20-1.60 mm [.047-.063 IN] | |
| TERMINAL APPLICATION SPECIFICATION | (A)114-18079 | - | - |
| TERMINALS APPLIED | | | |
| TE TERMINAL | TE TERMINAL | TE TERMINAL | TE TERMINAL |
| (A) 927871-1 | (A) 927871-2 | (A) 927871-4 | |

| TERMINAL DATA: TE TERMINAL | | TE CRIMP SPECIFICATION | |
|-------------------------------------|--------------|------------------------------|-------------|
| TERMINAL NAME: JUNIOR-TIMER CONTACT | | | |
| WIRE STRIP LENGTH | | INSULATION DIAMETER RANGE | |
| 3.40-4.00 mm [.134-.157 IN] | | Ø1.00-1.60 mm [.039-.063 IN] | |
| TERMINAL APPLICATION SPECIFICATION | (A)114-18079 | - | - |
| | (B)114-18080 | - | - |
| TERMINALS APPLIED | | | |
| TE TERMINAL | TE TERMINAL | TE TERMINAL | TE TERMINAL |
| (B) 926984-1 | (B) 926984-2 | (B) 1-926984-1 | |

| WIRE SIZE | CRIMP HEIGHT mm [INCH] | CRIMP HEIGHT REFERENCE SETTING |
|-----------|----------------------------|--------------------------------|
| 0.50mm2 | 1.06+/-0.05 [.042+/-0.002] | 6.9 |
| 0.37mm2 | 0.99+/-0.05 [.039+/-0.002] | 7.8 |
| 0.25mm2 | 0.93+/-0.05 [.037+/-0.002] | 8.2 |
| 0.20mm2 | 0.91+/-0.05 [.036+/-0.002] | 8.4 |

| WIRE SIZE | CRIMP HEIGHT mm [INCH] | CRIMP HEIGHT REFERENCE SETTING |
|-----------|----------------------------|--------------------------------|
| 0.50mm2 | 1.06+/-0.05 [.042+/-0.002] | 6.9 |
| 0.37mm2 | 0.99+/-0.05 [.039+/-0.002] | 7.8 |
| 0.25mm2 | 0.93+/-0.05 [.037+/-0.002] | 8.2 |
| 0.20mm2 | 0.91+/-0.05 [.036+/-0.002] | 8.4 |

- RECOMMENDED SPARE PARTS
- GREASE BEARING SURFACES LIGHTLY
- 3. LUBRICATE DAILY PER THE APPLICATOR INSTRUCTION SHEET SUPPLIED WITH THE APPLICATOR.
- APPLICATOR SPECIFIC DATA TO BE ENTERED INTO BLANK MEMORY CHIP AT ASSEMBLY. SEE BELOW FOR PART NUMBER:
PNEUMATIC FEED WITH "SMART APPLICATOR" CONVERSION: 8-2151808-4
SERVO FEED WITH "FINE CRIMP HEIGHT ADJUST": 8-2151808-5
- 5. ADJUSTMENT OF THE STRIPPER MAY BE REQUIRED WHEN MOVING THE APPLICATOR BETWEEN BENCH AND LEADMAKER APPLICATIONS.
- APPLY PART NUMBER 1-23419-5 LOCTITE TO THREADS OF ITEMS 50 & 62. APPLY PART NUMBER 2-23419-6 LOCTITE TO THREADS OF ITEM 242.
- GREASE THREADS, GROOVE AND O-RING ON ITEMS 139 & 152.
- MAGNET MUST BE ORIENTED CORRECTLY IN ORDER TO PROPERLY ACTUATE THE COUNTER.
- CRIMP HEIGHT REFERENCE SETTING WAS THE SETTING USED WHEN THE APPLICATOR WAS QUALIFIED AT THE FACTORY. ADJUSTMENT MAY BE NECESSARY WHEN RUNNING APPLICATOR IN THE FIELD.
- TERMINAL PITCH NOT COMPATIBLE WITH MECHANICAL FEED.
- TO CONVERT THE APPLICATOR TO A NON-CARRIER CUTTING STYLE, REMOVE ITEM 13 AND ATTACH TO THE LOCATION ON BACK SIDE OF THE HOUSING. REFER TO INSTRUCTION SHEET FOR ADDITIONAL INFORMATION.
- TERMINAL LUBRICANT IS RECOMMENDED.

***WARNING**
 ON INSTALLATION, SET WIRE DISC, ITEM 40 TO LARGEST WIRE SIZE SETTING. USE OF SETTINGS BELOW MINIMUM REQUIRED CRIMP HEIGHT SETTING WILL CAUSE DAMAGE TO CRIMP TOOLING.

| - | 1 | 1 | 1 | 2119782-1 | FINE ADJUST HEAD ASM, PACIFIC STYLE | 251 |
|-----|-----|-----|-----|-----------|-------------------------------------|---------|
| -77 | -27 | -25 | -22 | PART NO | DESCRIPTION | ITEM NO |

PACIFIC VERSION
 Shown on sheets 3 of 4 & 4 of 4
 (Atlantic version shown on sheets 1 of 4 & 2 of 4)

| SET UP GAUGE | LOC | DIST | REVISIONS | | | | | |
|--------------|-----|------|-----------|-----|-------------|------|-----|------|
| 2119599-1 | A | 66 | P | LTN | DESCRIPTION | DATE | OWN | APVD |
| | | | - | - | SEE SHEET 1 | - | - | - |

| | | | | | | |
|-----|-----|-----|-----|-------------|-------------------------------------|---------|
| - | - | - | 1 | 2119640-1 | PUSH ROD, AIR FEED | 250 |
| - | - | - | 1 | 1803259-1 | BUSHING, FLANGED | 249 |
| - | 1 | 1 | 1 | 1-22279-3 | SPRING, COMPRESSION | 246 |
| - | 1 | 1 | 1 | 2119082-8 | CAM, SNAIL, INSULATION ADJUSTMENT | 244 |
| - | 1 | 1 | 1 | 2079764-1 | WASHER, WAVE SPRING, CREST-TO-CREST | 243 |
| | 1 | 1 | 1 | 2119083-1 | RETAINER, INSULATION DIAL | 242 |
| - | 1 | 1 | 1 | 7-18023-7 | SCR, SKT HD CAP M3 X 4.0 | 241 |
| - | - | 2 | - | 2168400-6 | SHCS, LOW HEAD, RoHS, M5 X 16 | 240 |
| - | - | - | 1 | 2063440-1 | AIR FEED MODULE | 238 |
| - | - | - | 1 | 2119740-2 | TAG, IDENTIFICATION | 213 |
| - | - | - | 1 | 1901094-3 | SPACER, FEEDER | 198 |
| - | 1 | 1 | 1 | 993111-1 | PIN, SLOTTED SPRING 3.0 X 20.0 | 177 |
| - | 1 | 1 | 1 | 8-22280-7 | SPRING, COMPRESSION | 176 |
| - | 1 | 1 | 1 | 1752353-2 | GUIDE PIN, HOLDDOWN | 175 |
| - | 1 | 1 | 1 | 1901680-2 | GUIDE PIN, HOLDDOWN | 174 |
| - | - | - | 2 | 21045-3 | RING, RETAIN, EXTERN, 3/16 CRESCENT | 172 |
| - | 1 | 1 | 1 | 994969-1 | MAGNET, RARE EARTH HIGH ENERGY | 166 |
| - | REF | REF | REF | 994970-2 | COUNTER, MAGNETIC | 164 |
| - | - | - | 1 | 240638-1 | SPRING, FEED FINGER | 163 |
| | 1 | 1 | 1 | 8-21084-1 | O-RING, .801 ID, .070 DIA. MAT. | 152 |
| - | - | - | 1 | 2119641-2 | FEED CAM, AIR FEED | 151 |
| - | 1 | 1 | 1 | 2119798-2 | DETENT PIN | 145 |
| - | 1 | 1 | 1 | 2079383-8 | SCR, BHSC, RoHS (M4 X 16) | 144 |
| - | 4 | 4 | 4 | 2168400-5 | SHCS, LOW HEAD, RoHS, M4 X 20 | 143 |
| - | 1 | 1 | 1 | 1-2119656-0 | APPLICATOR BASIC ASSEMBLY, SF | 141 |
| - | 1 | 1 | 1 | 2119650-1 | RAM, ASIAN STYLE, SIDE FEED | 140 |
| | 1 | 1 | 1 | 2119092-2 | BOLT, ADJUSTMENT | 139 |
| - | - | - | 1 | 3-23627-7 | PIN, RETAIN, GRVD, 3/16 X .854 | 137 |
| - | - | - | 1 | 2119799-1 | HOLDER, FEED FINGER, AF | 136 |
| - | - | REF | - | SEE NOTE 4 | MEMORY CHIP, PROGRAMMED | 135 |
| - | - | - | 1 | 1633743-1 | SERVO FEED LATCH ASM | 133 |
| - | 1 | 1 | 1 | 1-18028-2 | WASHER, FLAT, REG M4 | 119 |
| - | - | REF | - | 2119944-1 | FEED FINGER ASSEMBLY, SF | 117 |
| | 1 | 1 | 1 | 2119955-1 | ASSY, LUBRICATOR, SIDE FEED | 113 |
| - | 1 | 1 | 1 | 455888-5 | SPACER, CRIMPER | 82 |
| - | 1 | 1 | 1 | 2119956-1 | DOCUMENTATION PACKAGE | 71 |
| - | 1 | - | 1 | 2119740-1 | TAG, IDENTIFICATION | 67 |
| - | 2 | 2 | 2 | 2168078-1 | SCREW, DRIVE, RH, RoHS, 2 x .188 | 66 |
| | 1 | 1 | 1 | 2119793-1 | LIMITER, ADJUSTMENT BOLT | 63 |
| - | 3 | 3 | 3 | 992763-5 | SCR, SET, SOC, CONE POINT, M3 x 4.0 | 62 |
| - | - | - | 1 | 5-18022-5 | SCR, HEX HD CAP, M4 X 6.0 | 59 |
| - | - | - | 1 | 1338685-1 | PAWL, FEED | 56 |
| - | 1 | 1 | 1 | 1-5018030-0 | NUT, HEX, REG, RoHS, M3.5 | 52 |
| - | 1 | 1 | 1 | 1901681-1 | HOLDDOWN, TERMINAL | 51 |
| | 1 | 1 | 1 | 2-1752354-0 | STANDOFF, HOLD-DOWN | 50 |
| - | - | - | 1 | 18023-9 | SCR, SKT HD CAP M4 X 6.0 | 49 |
| - | 1 | 1 | 1 | 2079383-7 | SCR, BHSC, RoHS (M8 X 25) | 41 |
| - | 1 | 1 | 1 | 2119645-1 | DISC, NUMBERED FA WIRE ADJUSTMENT | 40 |
| - | 1 | 1 | 1 | 2119957-1 | APPLICATOR SHIM PACK | 39 |
| - | 1 | 1 | 1 | 2119644-1 | RAM WASHER, PRECISION | 38 |
| - | 1 | 1 | 1 | 1752356-3 | SUPPORT, TERMINAL | 34 |
| - | 2 | 2 | 2 | 2079383-5 | SCR, BHSC, RoHS (M4 X 20) | 33 |
| - | 1 | 1 | 1 | 2161328-1 | HEX HEAD, FLANGED, M5 x 8mm LONG | 32 |
| - | 1 | 1 | 1 | 1320908-3 | SPACER, STRIP GUIDE | 30 |
| - | 1 | 1 | 1 | 2119959-1 | ASSEMBLY, STRIP GUIDE | 29 |
| - | 1 | 1 | 1 | 1-455888-0 | SPACER, CRIMPER | 28 |
| - | 1 | 1 | 1 | 1320928-2 | STRIP GUIDE | 24 |
| - | 1 | 1 | 1 | 2168083-2 | SCR, SKT HD CAP, RoHS, M4 X 8.0 | 21 |
| - | 1 | 1 | 1 | 1-18028-2 | WASHER, FLAT, REG M4 | 20 |
| - | 1 | 1 | 1 | 2119533-1 | STRIPPER, SIDE FEED | 19 |
| | 1 | 1 | 1 | 2119806-1 | INSERT, SHEAR | 13 |
| - | 1 | 1 | 1 | 3-22280-3 | SPRING, COMPRESSION | 12 |
| - | 1 | 1 | 1 | 1-356885-4 | STOP, SHEAR | 11 |
| | 1 | 1 | 1 | 2119805-1 | SHEAR HOLDER, FRONT | 10 |
| | 1 | 1 | 1 | 462006-6 | FLOATING SHEAR, FRONT | 9 |
| | 1 | 1 | 1 | 1-1333202-0 | ANVIL, COMBINATION | 8 |
| - | - | - | - | - | - | 7 |
| - | - | - | - | - | - | 6 |
| - | 1 | 1 | 1 | 2119757-5 | DEPRESSOR, SHEAR | 5 |
| - | 1 | 1 | 1 | 2-238011-2 | BLOCK, CRIMPER SPACER | 4 |
| | 1 | 1 | 1 | 1-2119582-1 | CRIMPER, INSULATION F PREMIUM | 3 |
| - | 1 | 1 | 1 | 455888-8 | SPACER, CRIMPER | 2 |
| | 1 | 1 | 1 | 1-456403-3 | CRIMPER, WIRE PREMIUM | 1 |
| -77 | -27 | -25 | -22 | PART NO | DESCRIPTION | ITEM NO |

| DIMENSIONS: | | TOLERANCES UNLESS OTHERWISE SPECIFIED: | | DWG | | TE Connectivity | |
|-------------|---------|--|----------|--|-----------|-----------------|-----------|
| mm | 0 PLC ± | 1 PLC ± | 2 PLC ± | OFFNER | 07NOV2012 | CHS | 08NOV2012 |
| | 3 PLC ± | 4 PLC ± | ANGLES ± | ELBIN | 08NOV2012 | APVD | 08NOV2012 |
| MATERIAL | FINISH | WEIGHT | SCALE | Ocean Side Feed Applicator | | | |
| | | | 1:2 | Customer Accessible Production Drawing | | | |

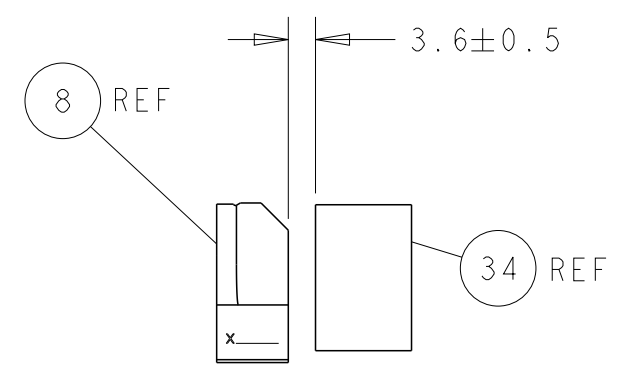
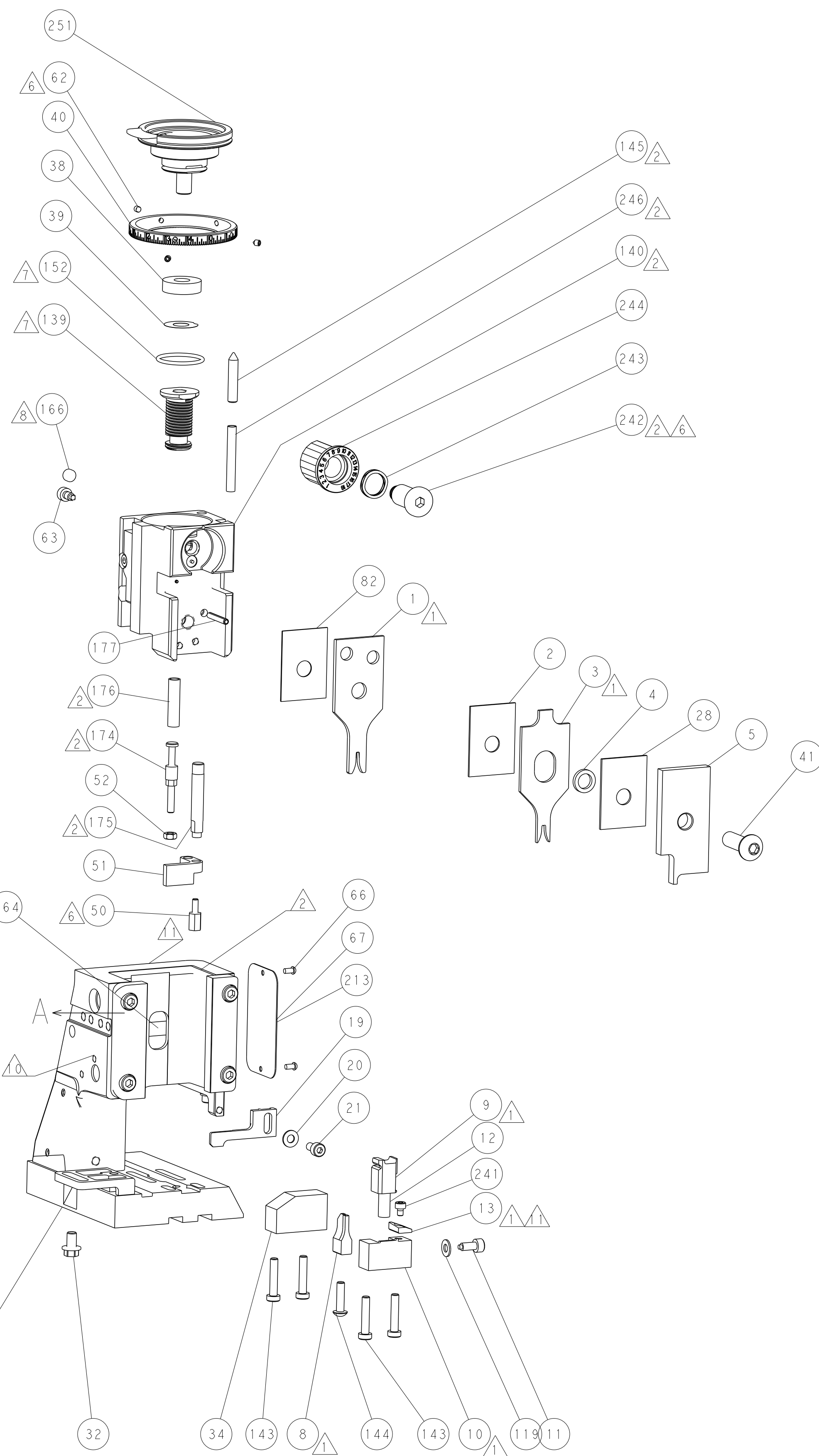
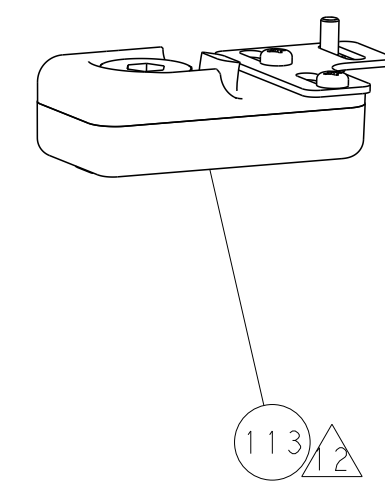
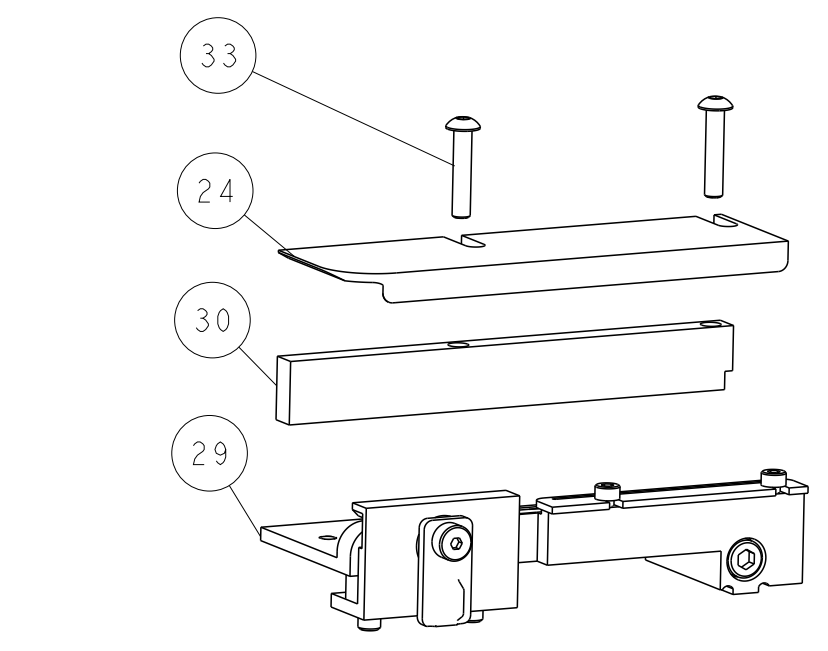
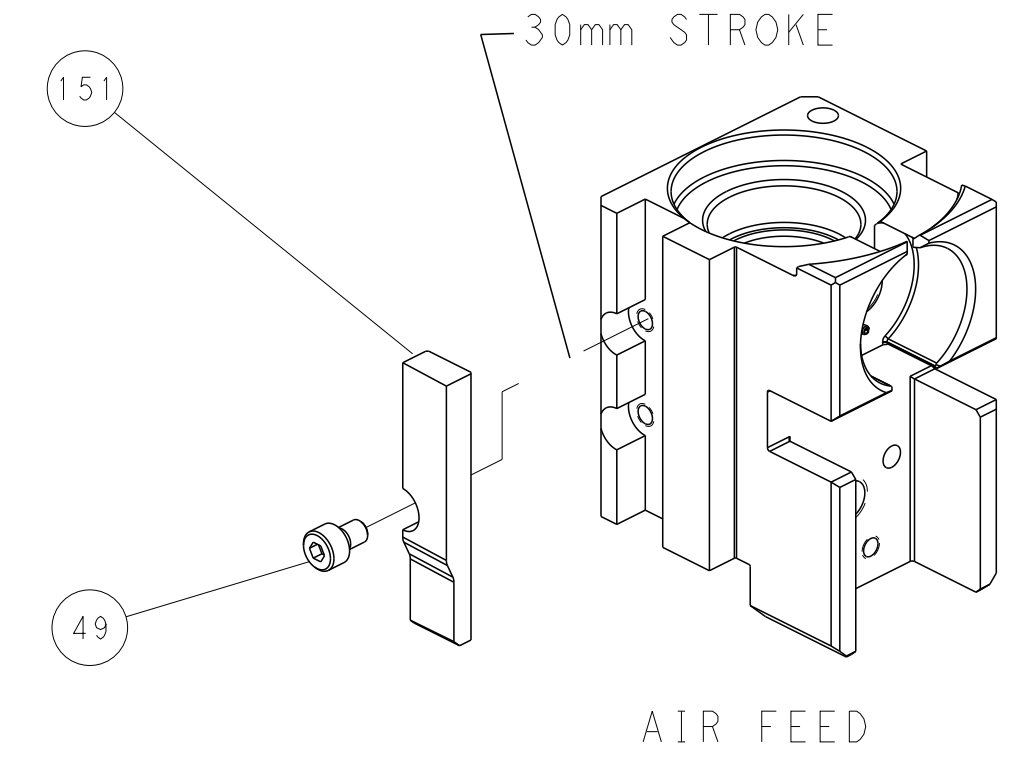
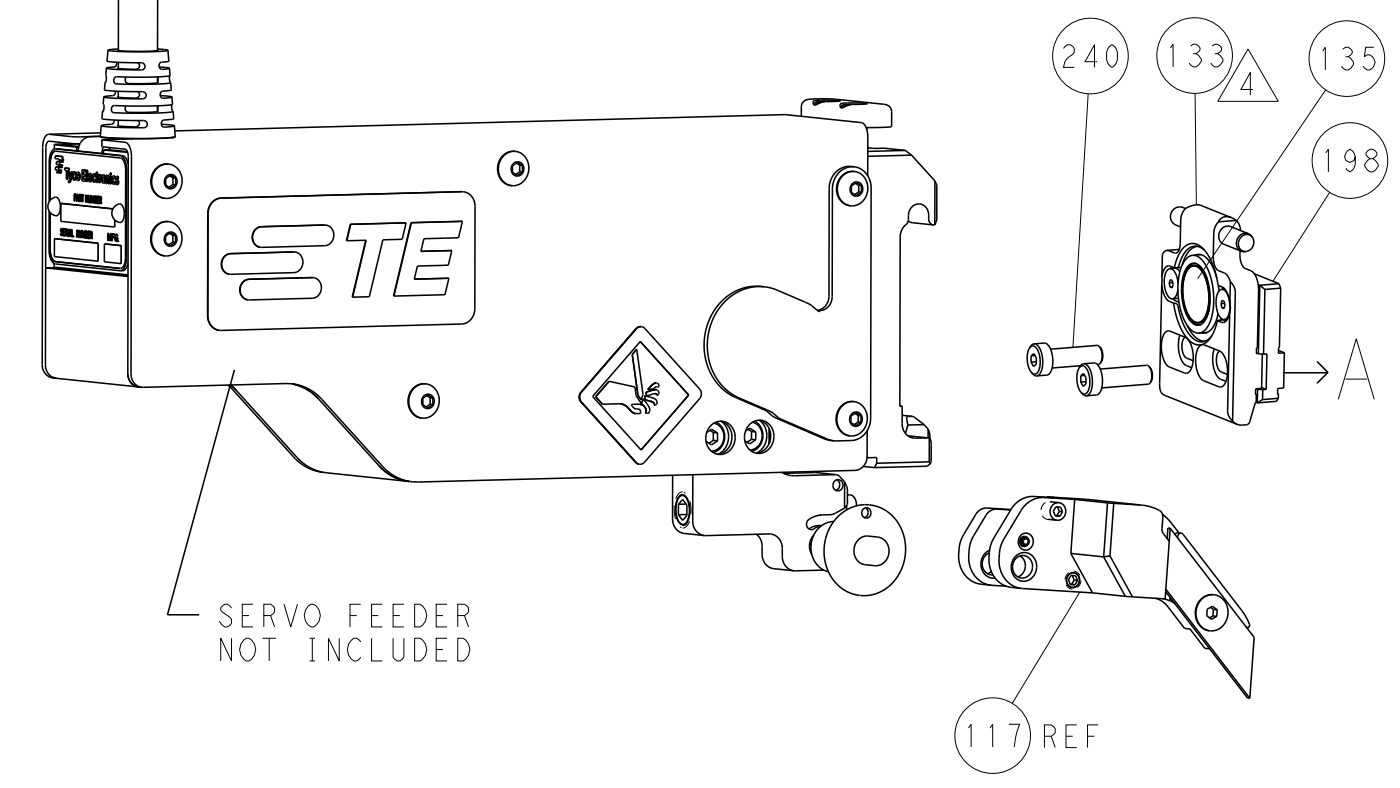
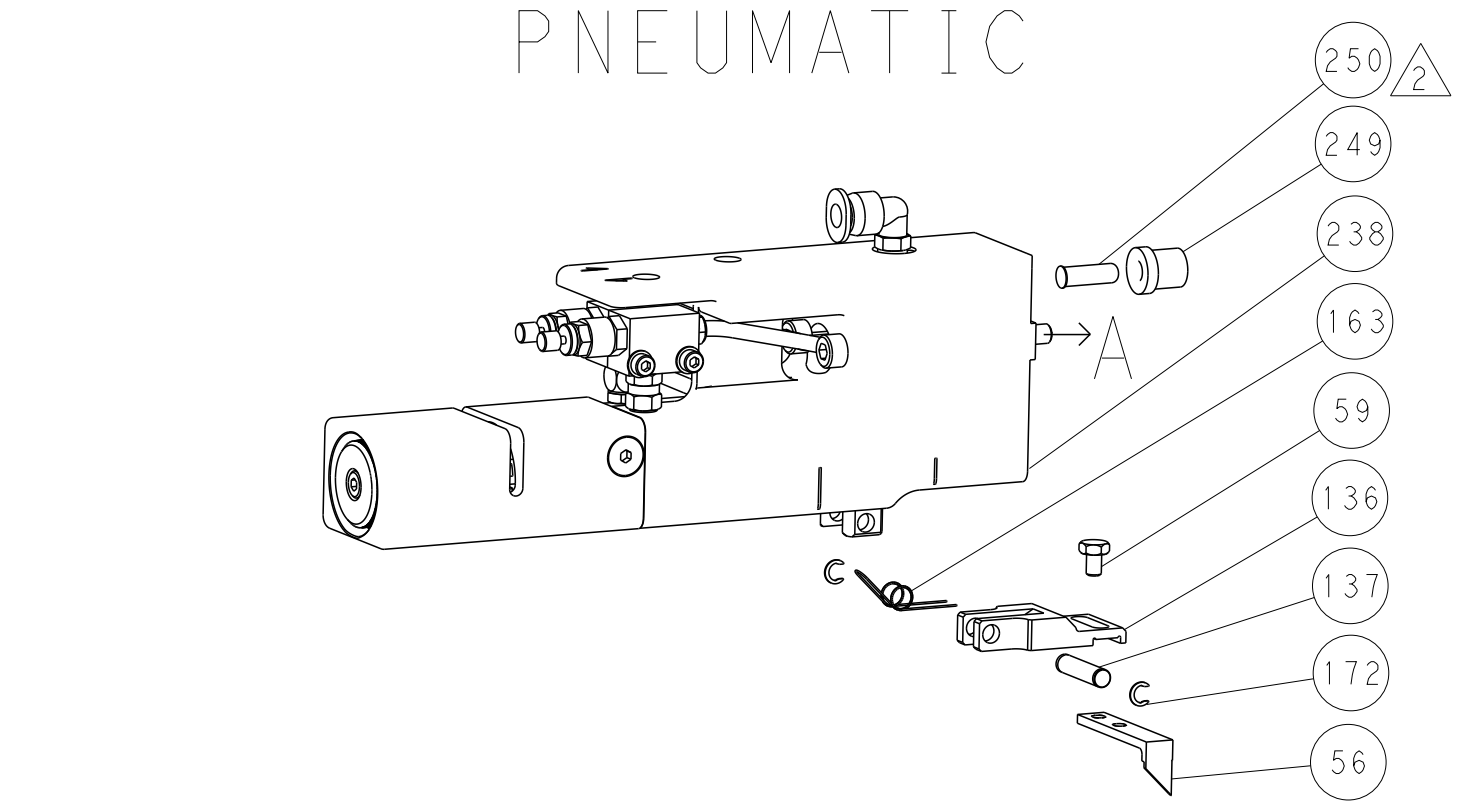
| LOC | DIST | REVISIONS | | | | | |
|-----|------|-----------|-----|-------------|------|-----|------|
| A | 66 | P | LTN | DESCRIPTION | DATE | DMN | APVD |
| | | - | | SEE SHEET 1 | | | |

FEED TYPE

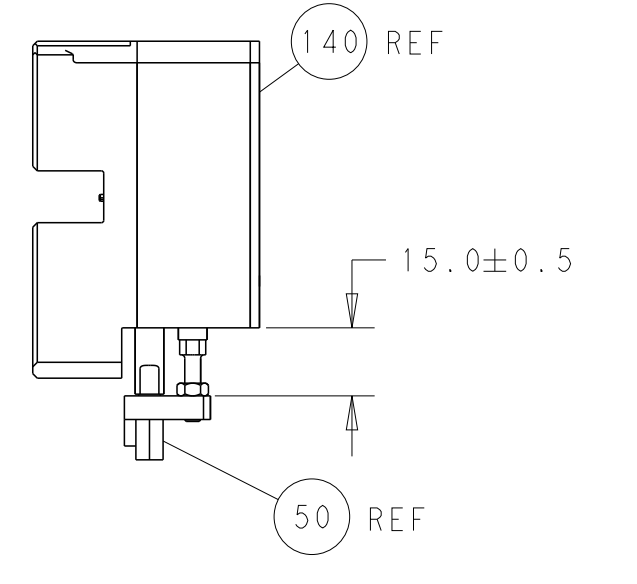
PNEUMATIC

SERVO LATCH PLATE

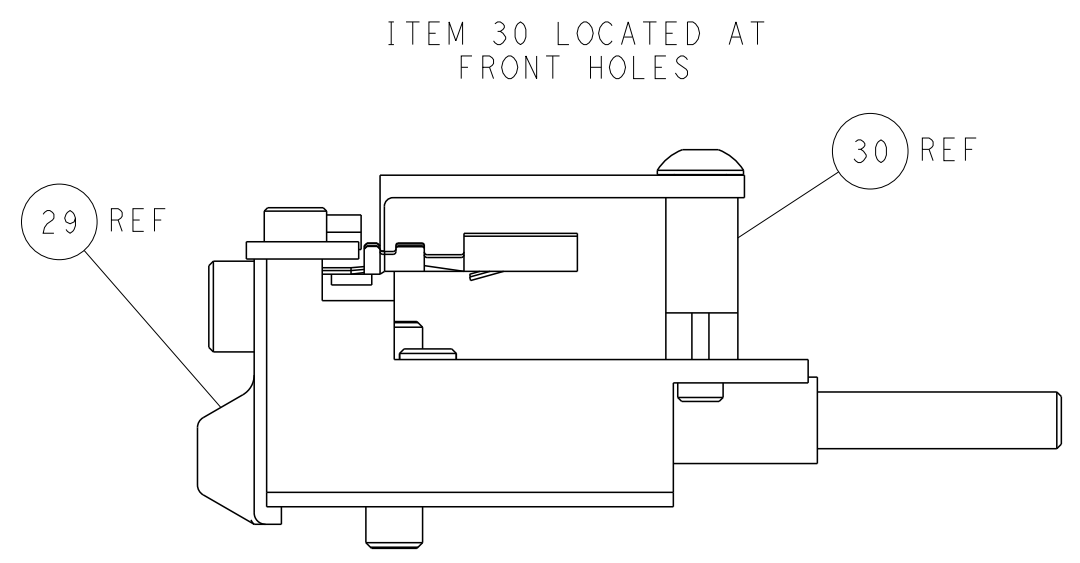
CAM POSITIONS



TERMINAL SUPPORT LOCATION



HOLDDOWN SET-UP



FEED TRACK POSITION GUIDE BY INSULATION BARREL

PACIFIC VERSION
 Shown on sheets 3 of 4 & 4 of 4
 (Atlantic version shown on sheets 1 of 4 & 2 of 4)

| | | | |
|--|--------------------------|---|---|
| <small>THIS DRAWING IS UNPUBLISHED. RELEASED FOR PUBLICATION. IT IS THE PROPERTY OF TYCO ELECTRONICS CORPORATION. IT IS TO BE USED ONLY FOR THE PURPOSES SPECIFIED. IT IS TO BE RETURNED TO TYCO ELECTRONICS CORPORATION UPON THE COMPLETION OF THE PROJECT. IT IS NOT TO BE REPRODUCED OR TRANSMITTED IN ANY FORM OR BY ANY MEANS, ELECTRONIC OR MECHANICAL, INCLUDING PHOTOCOPYING, RECORDING, OR BY ANY INFORMATION STORAGE AND RETRIEVAL SYSTEM. PERMISSION TO REPRODUCE THIS DRAWING IN WHOLE OR IN PART IS GRANTED BY TYCO ELECTRONICS CORPORATION TO THE USER OF THIS DRAWING FOR THE USER'S OWN USE ONLY. ALL RIGHTS RESERVED.</small> | | DWN: HOFFNER 07NOV2012 CHK: T.ELBIN 08NOV2012 APVD: T.ELBIN 08NOV2012 | TE Connectivity Harrisburg, PA 17105-3608 |
| DIMENSIONS: mm TOLERANCES UNLESS OTHERWISE SPECIFIED: 0 PLC ± 1 PLC ± 2 PLC ± 3 PLC ± 4 PLC ± ANGLES ° ± | MATERIAL: - FINISH: - | NAME: Ocean Side Feed Applicator APPLICATION SPEC: - PRODUCT SPEC: - SIZE: A1 CAGE CODE: 00779 DRAWING NO: C=2151808 | RESTRICTED TO: - SCALE: 1:2 SHEET: 4 OF 4 REV: B |