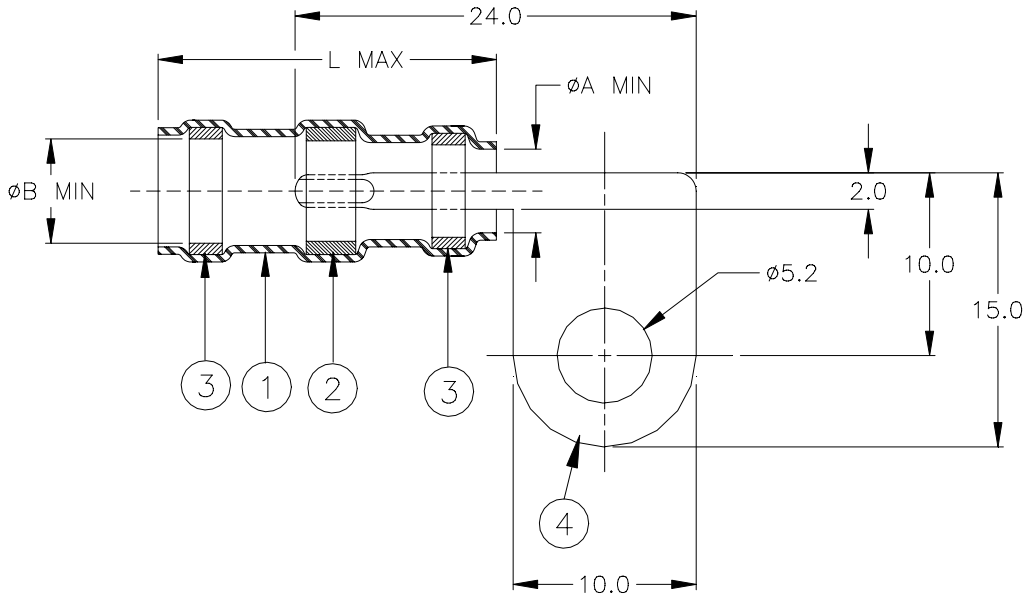


## SPECIFICATION CONTROL DRAWING



Product Revision		Product Dimensions			Cable Dimensions		
Product Name		$\phi A$ min	$\phi B$ min	L max	$\phi E$ min	$\phi G$ max	$J \pm 0.5$ ( $J \pm 0.020$ )
B-150-05-F	B	4.3 (0.169)	4.8 (0.189)	18.5 (0.728)	2.0 (0.078)	4.3 (0.169)	6.5 (0.256)
B-150-07-F	B	6.8 (0.267)	7.3 (0.287)	21.0 (0.827)	3.3 (0.130)	6.8 (0.267)	8.0 (0.315)

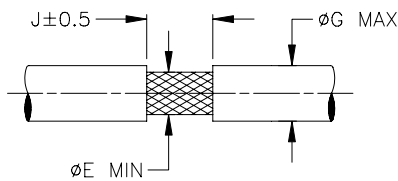
### MATERIALS

- INSULATION SLEEVE: Heat-shrinkable, transparent clear, radiation cross-linked modified polyolefin.
- SOLDER PREFORM WITH FLUX.  
SOLDER: TYPE Cd18 per ANSI-J-STD-006.  
FLUX: TYPE ROM1 per ANSI-J-STD-004.
- MELTABLE SEALING RINGS: Thermally stabilized thermoplastic.
- GROUNDING BAR: Tin plated brass alloy.

### APPLICATION

- These controlled soldering, grounding devices are designed for termination of a bare or tin plated copper shield on a cable having an insulation rated for at least +85°C.
- Temperature range: -55°C to +125°C.
- For installation procedure and application equipment, consult RPIP-688-02.

For best results, prepare the cable as shown:



<b>Raychem</b>		THERMOFIT DEVICES		Raychem Corporation 300 Constitution Drive Menlo Park, CA 94025 USA		TITLE: <b>SOLDERSLEEVE WITH FLAG TERMINAL</b>	
UNLESS OTHERWISE SPECIFIED DIMENSIONS ARE IN MILLIMETERS. INCHES DIMENSIONS ARE BETWEEN BRACKETS.				DOCUMENT NO: <b>B-150-XX-F</b>			
TOLERANCES: 0.00 N/A 0.0 N/A 0 N/A		ANGLES: N/A ROUGHNESS IN MICRON		Raychem reserves the right to amend this drawing at any time. Users should evaluate the suitability of the product for their application.		DCR NUMBER: D990885	
REPLACES: D990628		PREPARED BY: M. FORONDA		DATE: 10/20/99		REV. SEE TABLE	
DOC ISSUE: 1		SCALE: None		SIZE: A		SHEET: 1 of 1	

If this document is printed it becomes uncontrolled. Check for the latest revision.