

THIS DRAWING IS UNPUBLISHED. RELEASED FOR PUBLICATION

© COPYRIGHT BY TYCO ELECTRONICS CORPORATION. ALL RIGHTS RESERVED.

LOC FT	DIST 0	REVISIONS		
P	LTR	DESCRIPTION	DATE	DWN
	B	REVISED PER ECO-10-012476	17JUN10	HMR
				APVD CR

NOTES:

MATERIALS:

HOUSING: THERMOPLASTIC, UL94V-0, BLACK.
 TERMINALS: BRIGHT TIN PLATED, COPPER ALLOY.
 SCREWS: 6-32, STEEL, ZINC PLATED WITH CLEAR CHROMATE.

ELECTRICAL:

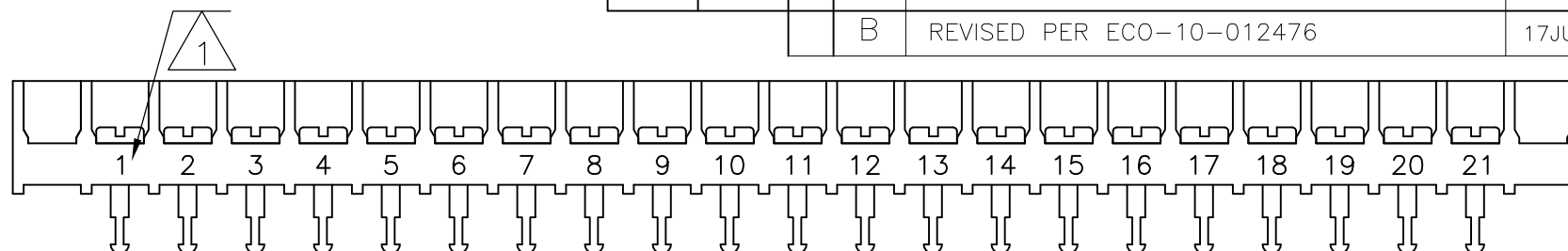
MAXIMUM CURRENT: 25A
 OPERATING VOLTAGE: 300V.
 WIRE RANGE: 12-22 AWG.

ENVIRONMENTAL:

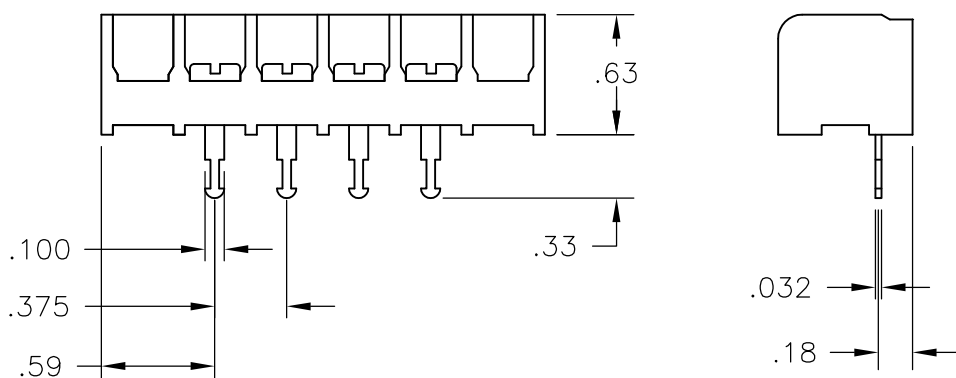
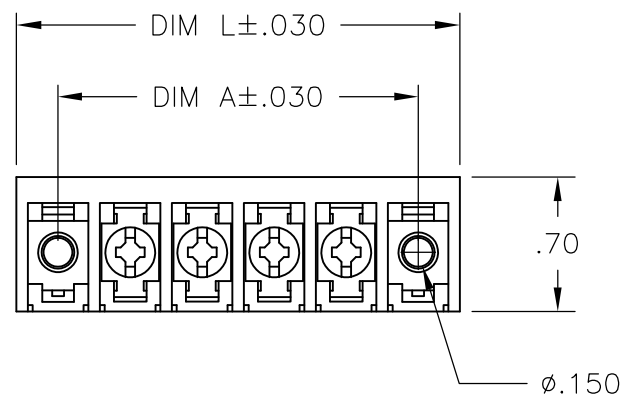
OPERATING TEMP.: 150°C MAX

1 WHITE LETTERING AS SHOWN.

2 PRELIMINARY PART NUMBER.



2-1776235-9



11.747	11.311	28	6STV-28-007	2-1776325-8
11.372	10.936	27	6STV-27-007	2-1776325-7
10.997	10.561	26	6STV-26-007	2-1776325-6
10.622	10.186	25	6STV-25-007	2-1776325-5
10.247	9.811	24	6STV-24-007	2-1776325-4
9.872	9.436	23	6STV-23-007	2-1776325-3
9.497	9.061	22	6STV-22-007	2-1776325-2
9.122	8.686	21	6STV-21-404	2-1776325-9
9.122	8.686	21	6STV-21-007	2-1776325-1
8.747	8.311	20	6STV-20-007	2-1776325-0
8.373	7.936	19	6STV-19-007	1-1776325-9
7.997	7.561	18	6STV-18-007	1-1776325-8
7.622	7.186	17	6STV-17-007	1-1776325-7
7.247	6.811	16	6STV-16-007	1-1776325-6
6.872	6.436	15	6STV-15-007	1-1776325-5
6.497	6.061	14	6STV-14-007	1-1776325-4
6.304	5.686	13	6STV-13-007	1-1776325-3
5.747	5.311	12	6STV-12-007	1-1776325-2
5.372	4.936	11	6STV-11-007	1-1776325-1
4.997	4.561	10	6STV-10-007	1-1776325-0
4.622	4.186	9	6STV-09-007	1776325-9
4.247	3.811	8	6STV-08-007	1776325-8
3.872	3.436	7	6STV-07-007	1776325-7
3.497	3.061	6	6STV-06-007	1776325-6
3.122	2.686	5	6STV-05-007	1546159-5
2.747	2.311	4	6STV-04-007	1776325-4
2.372	1.936	3	6STV-03-007	1776325-3
1.997	1.561	2	6STV-02-007	1776325-2
DIM. 'L'	DIM. 'A'	NO. OF POS.	CATALOG NUMBER	TE PART NO.

THIS DRAWING IS A CONTROLLED DOCUMENT.		DWN S SCHLEGEL 11/10/04	Tyco Electronics Corporation Harrisburg, Pa 17105-3608													
DIMENSIONS: INCHES		CHK S YODER 11/10/04	NAME													
TOLERANCES UNLESS OTHERWISE SPECIFIED:		APVD S YODER 11/10/04	6STV-XX-007													
<table border="0"> <tr><td>0 PLC</td><td>± -</td></tr> <tr><td>1 PLC</td><td>± -</td></tr> <tr><td>2 PLC</td><td>± .02</td></tr> <tr><td>3 PLC</td><td>± .010</td></tr> <tr><td>4 PLC</td><td>± -</td></tr> <tr><td>ANGLES</td><td>± 1°</td></tr> </table>		0 PLC	± -	1 PLC	± -	2 PLC	± .02	3 PLC	± .010	4 PLC	± -	ANGLES	± 1°	PRODUCT SPEC	SIZE	CAGE CODE
0 PLC	± -															
1 PLC	± -															
2 PLC	± .02															
3 PLC	± .010															
4 PLC	± -															
ANGLES	± 1°															
MATERIAL		APPLICATION SPEC	—	00779												
FINISH		WEIGHT	—	1546159-5												
—		CUSTOMER DRAWING	SCALE	SHEET												
—		—	NTS	1 OF 1												
—		—	REV	B												