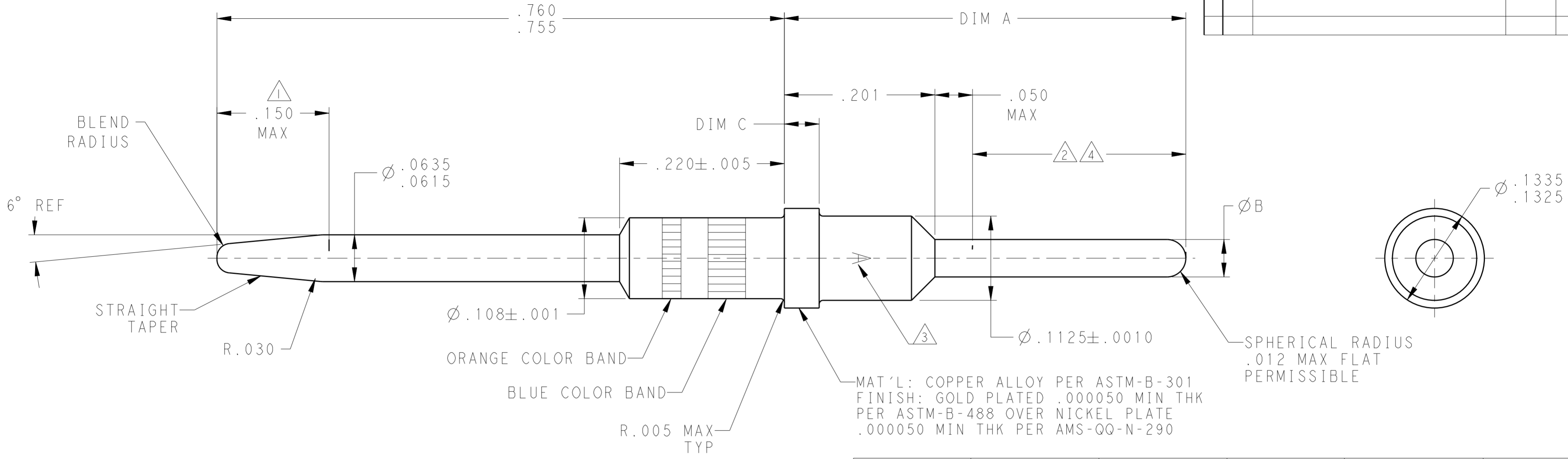


THIS DRAWING IS UNPUBLISHED. RELEASED FOR PUBLICATION
 © COPYRIGHT - BY TYCO ELECTRONICS CORPORATION. ALL INTERNATIONAL RIGHTS RESERVED.

LOC	DIST	REVISIONS			
P	LTR	DESCRIPTION	DATE	DWN	APVD
	U	REV PER ECO 10-024936	1-5-11	CT	KT
	V	REV PER ECO-12-014446	19DEC2012	RJM3	RG



--	.0445-.0485	.048-.052	.776	--	4-448139-3
2 4	.044-.048	.059 MAX	.701	--	4-448139-0
2	.044-.048	.059 MAX	.701	--	3-448139-9
--	.044-.048	.048-.052	.701±.005	--	3-448139-8
2	.044-.048	.059 MAX	.617±.005	--	3-448139-5
2 4	.044-.048	.059 MAX	.617±.005	--	3-448139-4
2	.0445-.0485	.048-.052	.606	--	3-448139-3
--	.0445-.0485	.059 MAX	.826±.005	--	3-448139-0
2	.0445-.0485	.048-.052	.826±.005	--	2-448139-9
--	.0445-.0485	.048-.052	.576	--	2-448139-5
2	.0445-.0485	.059 MAX	.651	--	2-448139-2
--	.044-.048	.048-.052	.468±.005	--	2-448139-1
2	.044-.048	.048-.052	.617±.005	--	1-448139-8
2	.0445-.0485	.059 MAX	.536±.005	--	1-448139-5
--	.044-.048	.048-.052	.505±.005	--	1-448139-4
--	.0445-.0485	.048-.052	.536	906-60033-18	1-448139-1
5	.0445-.0485	.0615-.0630	.415	--	448139-8
--	.0445-.0485	.048-.052	.651	906-60033-8	448139-6
--	.0445-.0485	.048-.052	.536	906-60033-4	448139-3
REMARKS	DIM C	DIM B	DIM A	CUSTOMER PART NO.	PART NO.

- 1 ELECTRICAL ENGAGEMENT POINT.
- 2 THIS AREA SOLDER DIPPED.
- 3 MANUFACTURERS LOGO; LACATION & ORIENTATION OPTIONAL.
- 4 SOLDER IS RoHS-COMPLIANT Sn.
- 5 COLOR CODE OMITTED.

THIS DRAWING IS A CONTROLLED DOCUMENT FOR TYCO ELECTRONICS CORPORATION. IT IS SUBJECT TO CHANGE AND THE CONTROLLING ENGINEERING ORGANIZATION SHOULD BE CONTACTED FOR THE LATEST REVISION.

DWN: C.C. THOMAS 27OCT2009
 CHK: K. THACKSTON 27OCT2009
 APVD: K. THACKSTON 27OCT2009

Tyco Electronics
 Tyco Electronics
 Harrisburg, PA 17105-3608

NAME: POSTED PIN CONTACT, SIZE 16, ARINC 600
 PRODUCT SPEC: -
 APPLICATION SPEC: -
 WEIGHT: -

MATERIAL: SEE TABLE
 FINISH: SEE CALLOUTS

SIZE: A200779
 CAGE CODE: C-448139
 DRAWING NO: -
 RESTRICTED TO: -

CUSTOMER DRAWING
 SCALE: 10:1
 SHEET 1 OF 1
 REV V