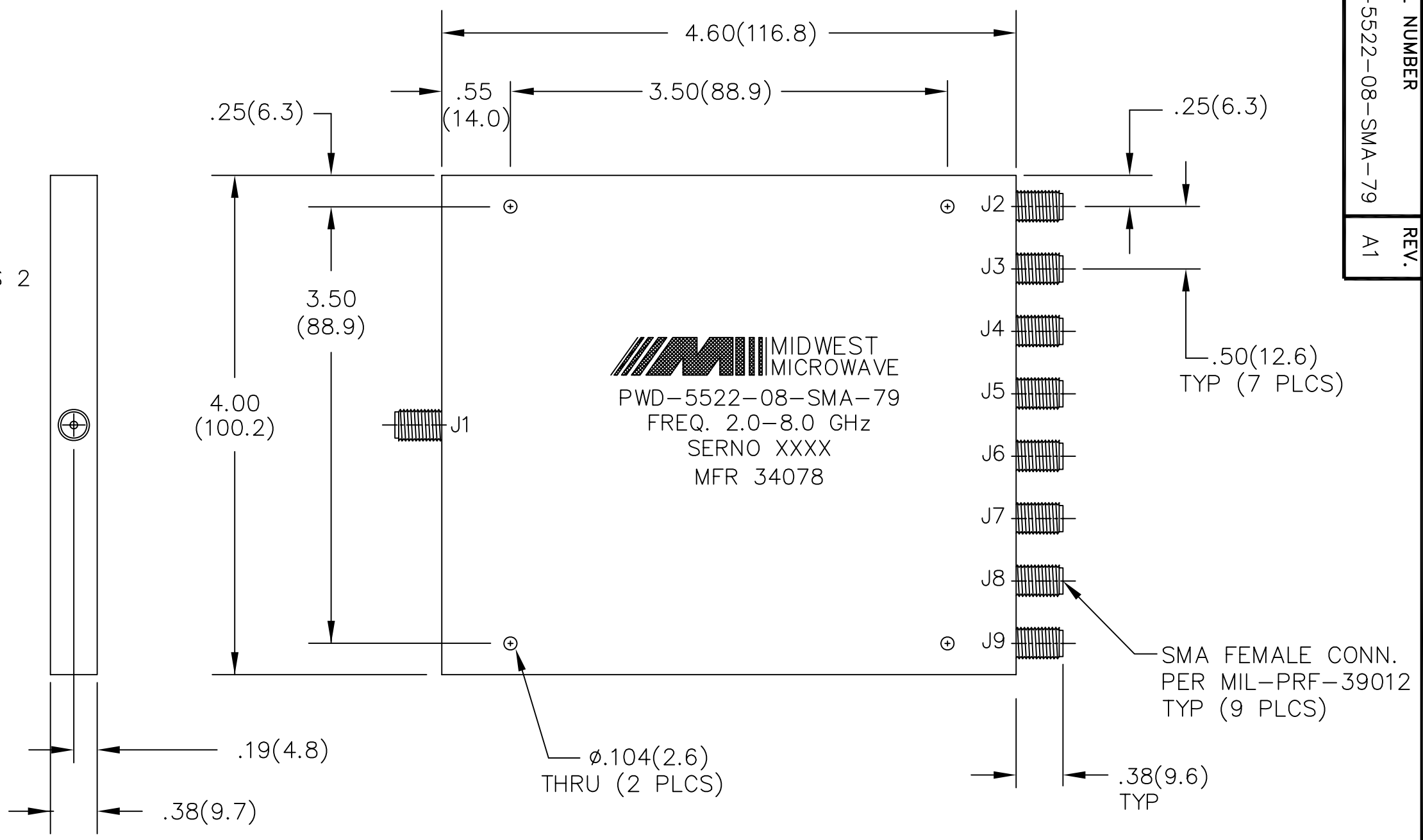


MODEL NUMBER  
PWD-5522-08-SMA-79  
REV.  
A1

- NOTES:
- 1.0 SPECIFICATIONS:
    - 1.1 FREQUENCY RANGE: 2.0 to 8.0 GHz
    - 1.2 INSERTION LOSS: 1.2dB MAX.
    - 1.3 AMPLITUDE BALANCE: 0.8dB MAX.
    - 1.4 PHASE BALANCE: 10° MAX.
    - 1.5 VSWR: 1.50:1 MAX.
    - 1.6 ISOLATION: 15dB MIN.
    - 1.7 INPUT POWER: 30 WATTS MAX.
    - 1.8 WEIGHT: 12.3 Oz. (349 GRAMS)

- 2.0 FINISH:
  - 2.1 GREY PER MIL-E-15090 TYPE II, CLASS 2  
OVER MIL-C-5541 CLASS 3A  
MEETS MIL-F-14072  
MEETS MIL-E-5400
  - 2.2 MARKING: MARK UNIT AS SHOWN.  
(REF.: SLK-09427-82-05)
- 3.0 DIMENSIONS IN PARENTHESIS ARE  
IN MILLIMETERS.



REV.	DESCRIPTION	DATE
-	RELEASED	5/2/96
A	ECN 15416	7/22/96
A1	ADDED TITLEBLOCK	7/19/05

UNLESS OTHERWISE NOTED DIMENSIONS ARE IN INCHES AND TOLERANCES ARE: 3 PLACE DECIMALS ±.005 2 PLACE DECIMALS ±.02 FRACTIONS ±1/64 PARALLELITY: T.I.R. _____ FLATNESS: T.I.R. _____ CONCENTRICITY: T.I.R. _____ ANGLES AND PERPENDICULARITY: ±1°	FSCM NO. <b>34078</b>	<b>MIDWEST MICROWAVE</b>	
	NOTICE: The information contained in this drawing is proprietary and must not be used without the permission of Midwest Microwave		TITLE POWER DIVIDER
	DRAWN/DATE M.STAFFORD 1/31/96	ENG./DATE P.GOODMAN 5/1/96	DRAWING NUMBER PWD-5522-08-SMA-79
	CHECKED/DATE	APPROVED/DATE	SCALE: 1=1 SHEET 1 of 1