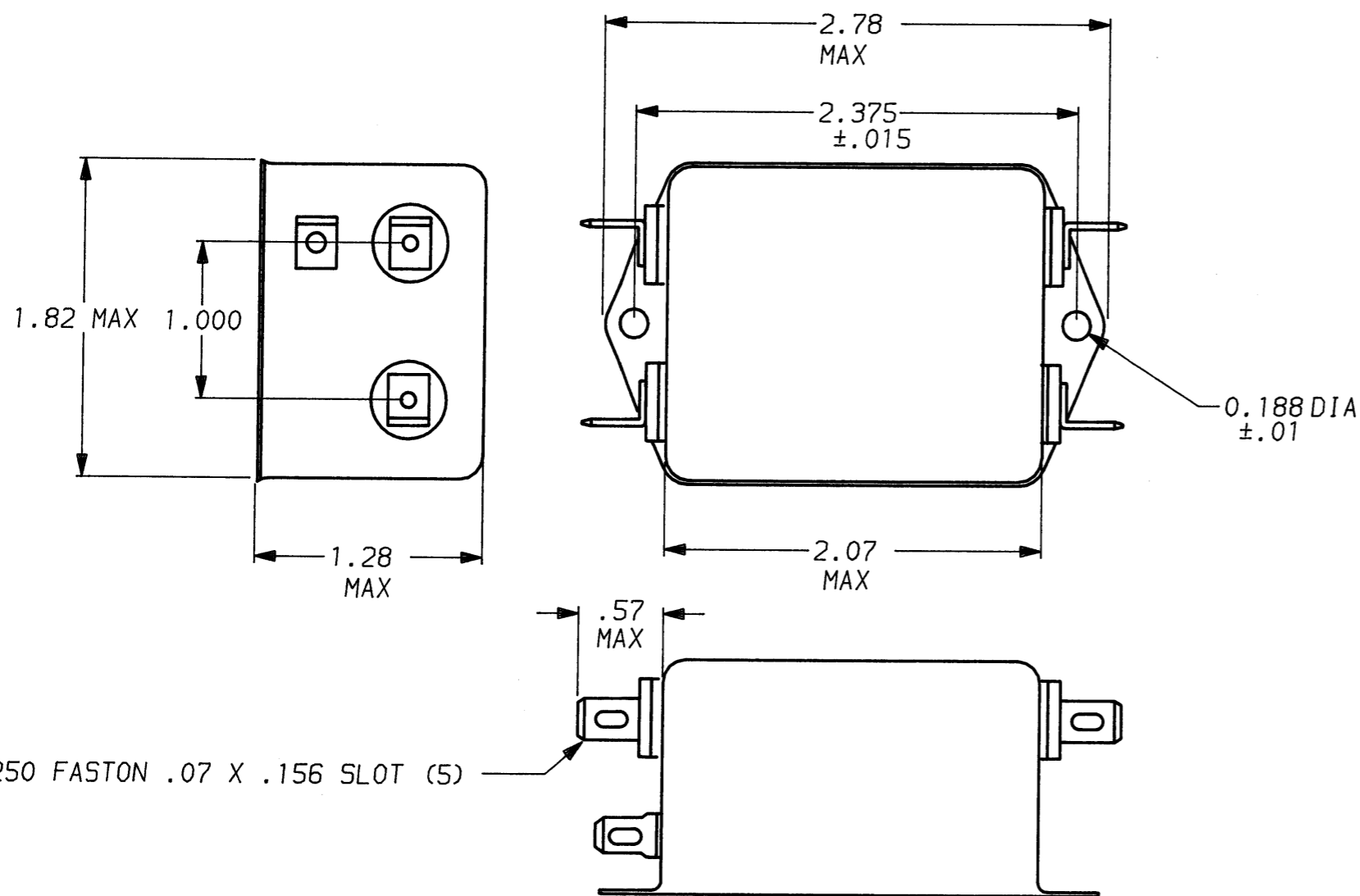


DESCRIPTION	APPROVED BY	DATE	REV
	<i>C. West</i>	8-2-90	3
ECO-09-026495	AEG	10DEC09	4



SAFETY ORGANIZATION(S):

THIS FILTER HAS BEEN FORMALLY RECOGNIZED, CERTIFIED OR APPROVED BY THE LISTED AGENCY. THEREFORE, ALL TEST/REQUIREMENTS SPECIFIED IN THE LATEST REVISION OF THE FOLLOWING AGENCY STANDARDS HAVE BEEN MET:

UL RECOGNIZED

UL 1283

OPERATING SPECIFICATIONS:

LINE VOLTAGE/CURRENT: 3.0 AMP., 120/250 VAC

LINE FREQUENCY: 50-60Hz

MAX. CASE RISE @ RATED CURRENT: 40°C

MAX. LEAKAGE CURRENT, EACH

LINE TO GROUND

0.5mA at 120V 60 Hz

OPERATING AMBIENT TEMP. RANGE:

-10°C TO +40°C @ RATED CURRENT,  $I_r$

IN AN AMBIENT,  $T_a$ , HIGHER THAN 40°C, THE MAXIMUM OPERATING CURRENT,  $I_o$ , IS AS FOLLOWS:

$$I_o = I_r \sqrt{\frac{85 - T_a}{45}}$$

RELIABILITY SPECIFICATIONS:

STORAGE TEMPERATURE:

-40°C TO +85°C

HUMIDITY:

21 DAYS @ 40°C 95% RH

CURRENT OVERLOAD TEST:

6 TIMES RATED CURRENT FOR 8 SECONDS

TEST SPECIFICATIONS:

INDUCTANCE:

1.05 mH NOMINAL

CAPACITANCE: (MEASURED @ 1 KHz, 0.25 VAC MAX., 25°C ±1°C)

LINE TO GROUND:

.013µF ±20%

LINE TO LINE:

.813µF ±20%

DISCHARGE RESISTOR:

10 MΩ

LINE/GROUND AND LINE/LINE

6000 MΩ (MIN) AT 100 VDC

INSULATION RESISTANCE

20°C AND 50% RH

(W/O DISCHARGE RESISTOR)

RECOMMENDED RECEIVING INSPECTION HIPOT:

LINES TO GROUND:

2250 VDC FOR 1 MINUTE

LINE TO LINE:

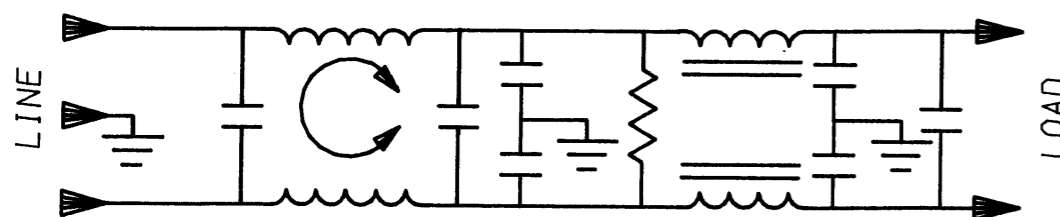
1450 VDC FOR 1 MINUTE

FILTER APPROVAL:

THE BEST WAY TO SELECT AND QUALIFY A FILTER IS FOR YOUR ENGINEERING TO TEST THE UNIT IN YOUR EQUIPMENT.

**1** OBSOLETE PARTS: OBSOLETE CIS STREAMLINING  
PER D.RENAUD/D.SINISI

1609041-1	OBSOLETE	<b>1</b>
6609041-1		



50Ω - 50Ω (MINIMUM) INSERTION LOSS									TOLERANCE EXCEPT AS NOTED					
FREQUENCY MHz	.15	.5	1	2	5	10	20	30	DECIMAL: .XXX .XX .X	ANGLES ± 1°				
COMMON dB	13	25	34	60	65	65	65	63	ENGLISH: ±.025	METRIC: ± —				
DIFF. dB	25	65	65	65	65	60	45	38	MATERIAL: AS SUPPLIED					
This document is proprietary to CORCOM INC. and is not to be reproduced nor used for manufacturing purposes except on CORCOM's order or prior written consent.									FINISH: AS SUPPLIED		SCALE: NTS	DATE: 7-31-90	DRG. NO.:	REV.:
											DRW. BY: CFW	ORIGINATOR: CFW	3W1A.4	



POWER LINE FILTER