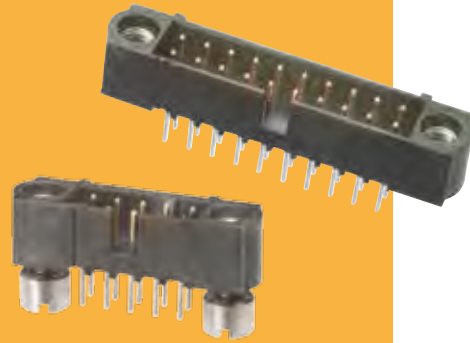


# Datamate J-Tek Connectors

## Male Vertical PC Tail

- Polarised mouldings.
- Fully shrouded contacts.
- Jackscrews are assembled where specified.
- Choice of PC tail length.
- Board Mount provides PCB strain relief.
- Mates with female Datamate J-Tek connectors with compatible jackscrews.



DATAMATE J-TEK

WITHOUT JACKSCREWS		WITH JACKSCREWS		WITH BOARD MOUNT		CALCULATION							
						<table border="1"> <tr> <td><b>A</b></td> <td>B + 12</td> </tr> <tr> <td><b>B</b></td> <td>Total no. of contacts - 2</td> </tr> <tr> <td><b>C</b></td> <td>B + 7</td> </tr> </table>		<b>A</b>	B + 12	<b>B</b>	Total no. of contacts - 2	<b>C</b>	B + 7
<b>A</b>	B + 12												
<b>B</b>	Total no. of contacts - 2												
<b>C</b>	B + 7												
<p>Recommended PC Board Pattern</p>													
				<p><b>Board Mount Nut, 2 per connector</b></p>									
<b>HOW TO ORDER</b>													
<b>M80 - 5 X X XX XX</b>													
<b>SERIES CODE</b>						<b>FINISH</b>							
0	With Jackscrews					05	Gold						
1	With Board Mount					42	Gold + Tin						
2	Without Jackscrews												
						<b>TOTAL NO. OF CONTACTS</b>							
0	3mm Tails					04, 06, 08, 10, 12, 14, 20, 26, 34, 42, 50							
1	4.5mm Tails												

All dimensions in mm.