

DETAILS

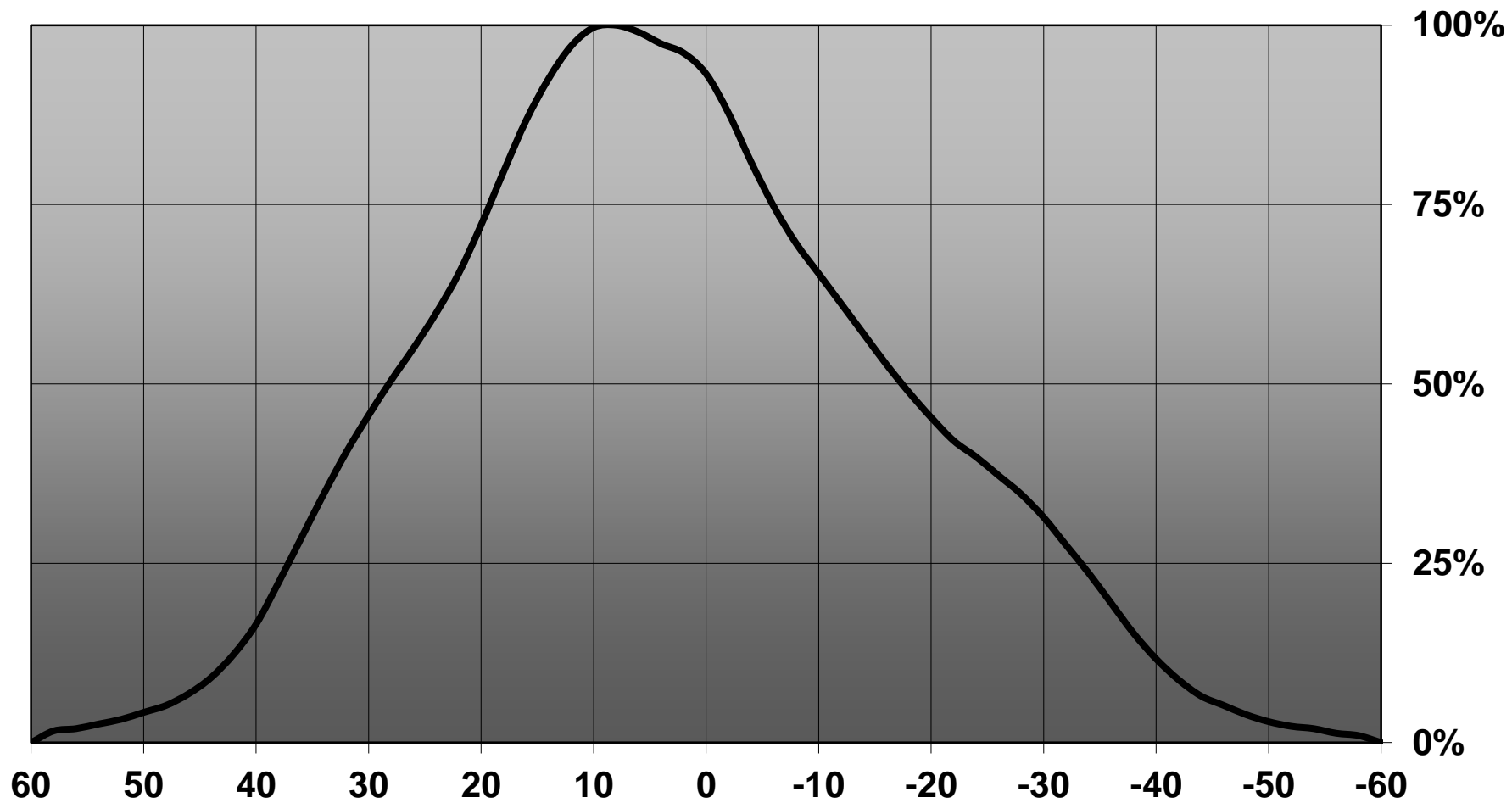
Product Number	FP11003_LISA2-WW-PIN
Family	Lisa
Type	Assembly
Color	black
Diameter	9,9 mm
Height	7 mm
Style	round
Optic Material	PMMA
Holder Material	
Fastening	glue, pin
Status	production ready
ROHS Compliant	Yes
Date Updated	13/09/2016



OPTICAL PROPERTIES

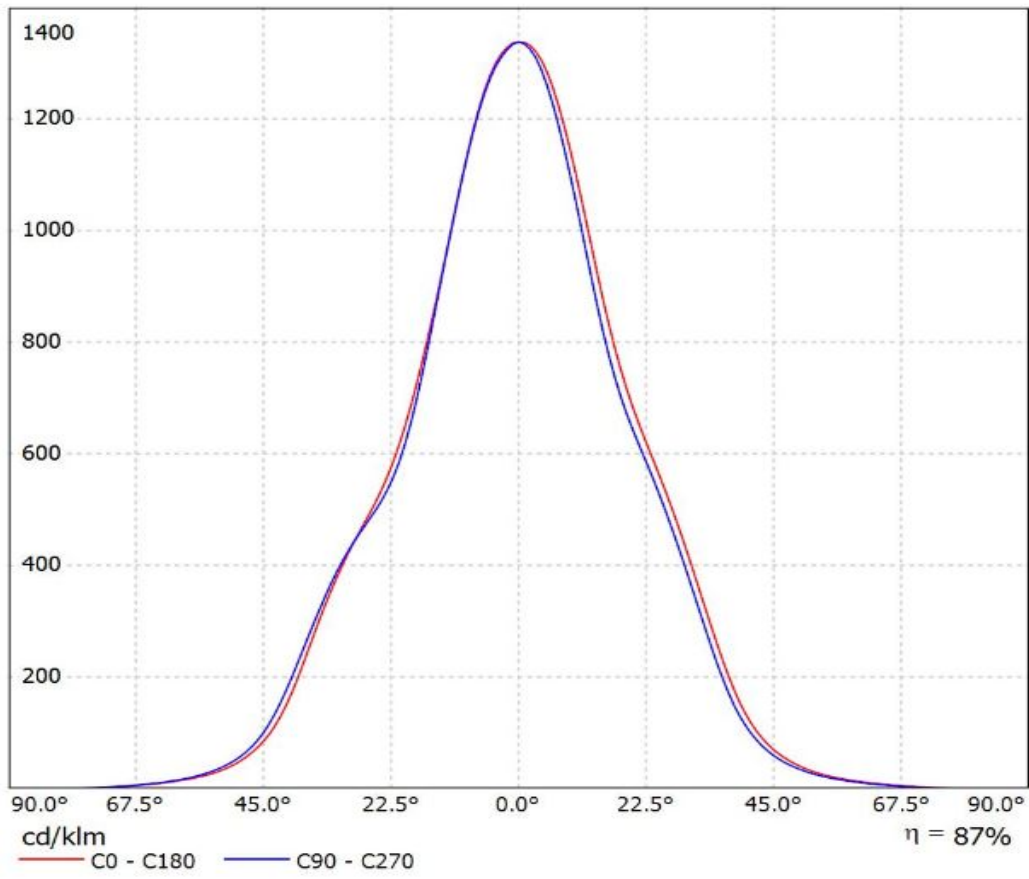
LED	Viewing	Light	Effi-		Connector
	Angle	Beam	ciency	cd/lm	
Oslon SSL 80	40 deg	Very Wide	87 %	1.340	-
Oslon SSL 150	45 deg	Very Wide	91 %	1.200	-
Oslon Square EC	48 deg	Very Wide	89 %	0.870	-
SFH 4770S	sim: 36	Very Wide	sim: 96 %	-	-
Synios P2720 1 mm	sim: 43	Very Wide	sim: 93 %	sim: 1.920	-

Relative intensity of FP11003-LISA2-WW-PIN_(SSL80)

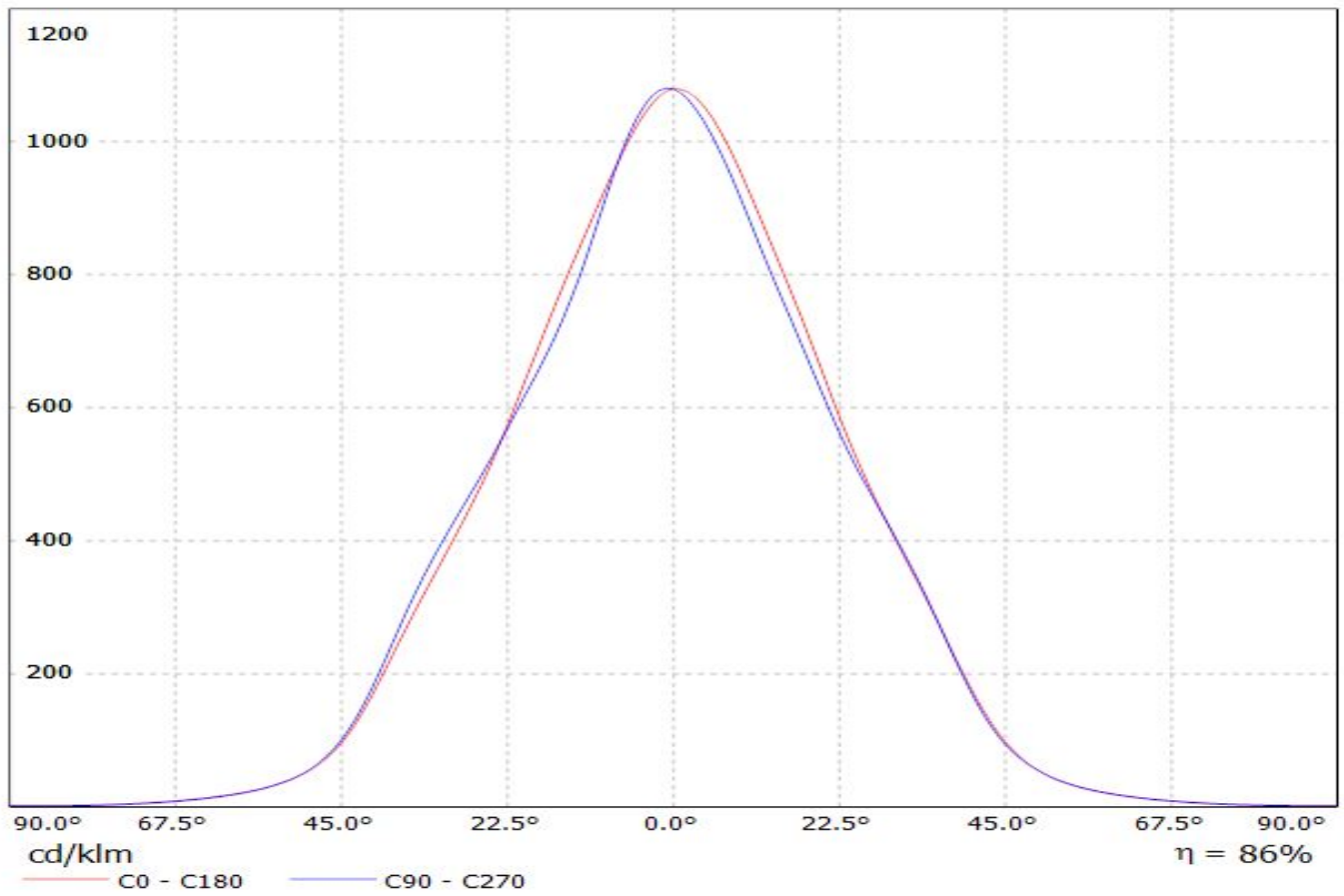


Luminaire: Ledil FP11003_LISA2-WW-PIN_(SSL80)

Lamps: 1 x Osram_Oslon_SSL80_(GW_CS8PM1.EM-KULQ-A7371)_88.4565lm@250mA_CCT=3000K_P=0.768825W_I=0.250A_CRI=Typ82

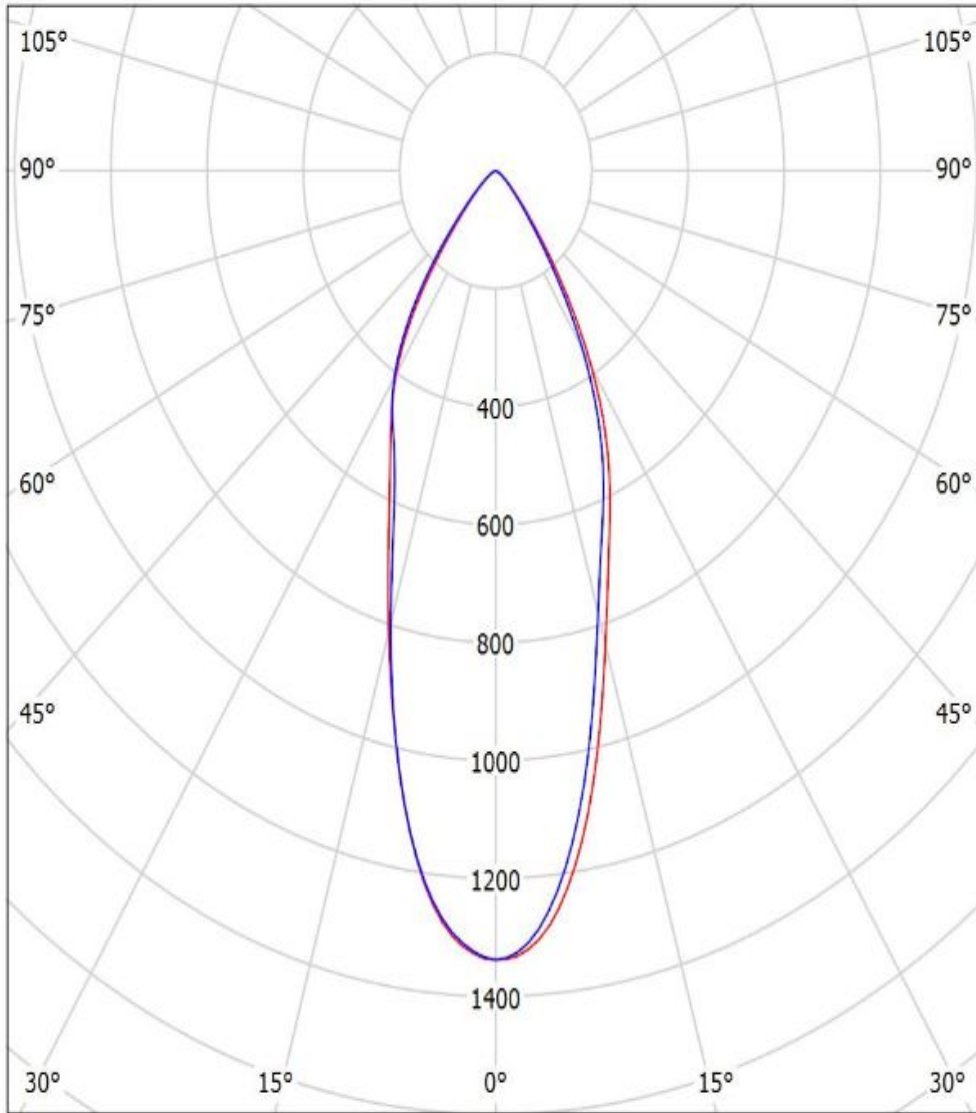


Luminaire: LEDiL Oy Lisa2-WW-PIN/CLIP_(Oslo Square_EC)
Lamps: 1 x Oslo Square EC 79lm@250mA CCT:3000K



Luminaire: Ledil FP11003_LISA2-WW-PIN_(SSL80)

Lamps: 1 x Osram_Oslon_SSL80_(GW_CS8PM1.EM-KULQ-A7371)_88.4565lm@250mA_CCT=3000K_P=0.768825W_I=0.250A_CRI=Typ82

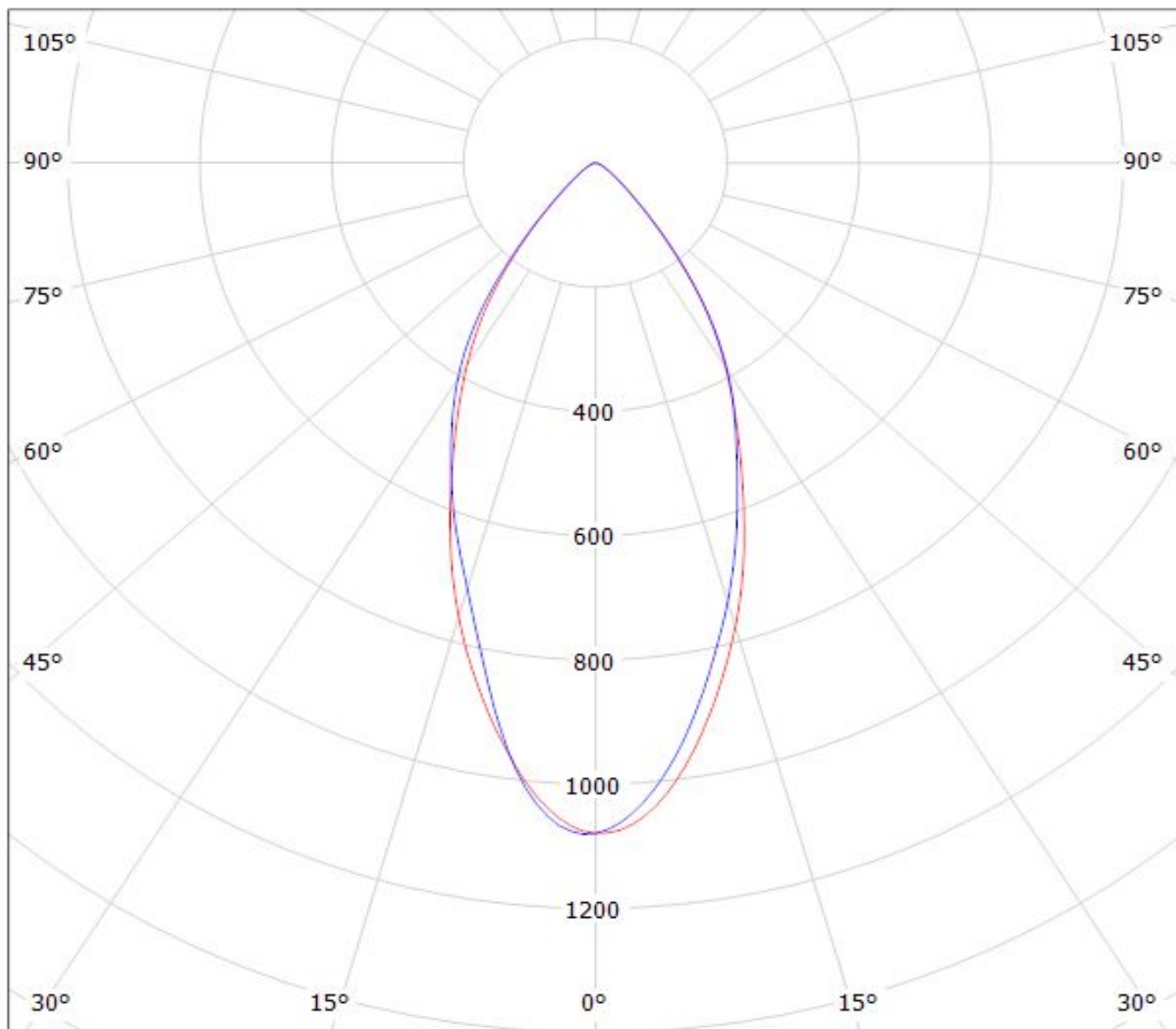


cd/klm

— C0 - C180 — C90 - C270

$\eta = 87\%$

Luminaire: LEDiL Oy Lisa2-WW-PIN/CLIP_(Oslon_Square_EC)
Lamps: 1 x Oslon Square EC 79lm@250mA CCT:3000K

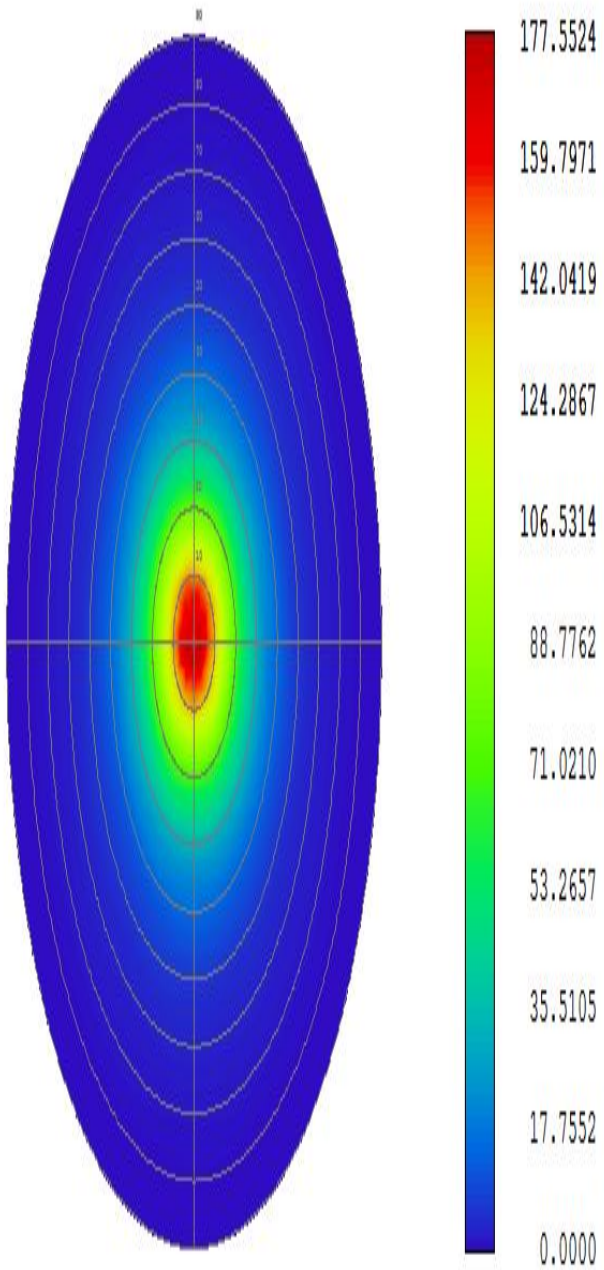


cd/klm

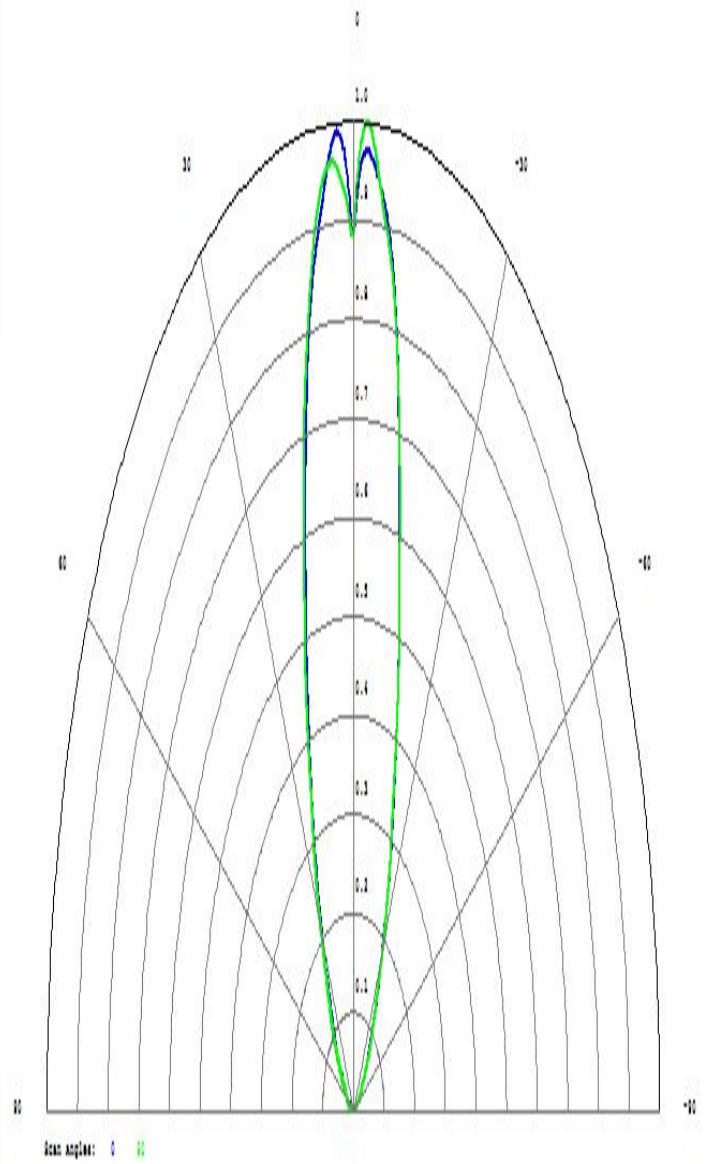
— C0 - C180

— C90 - C270

$\eta = 86\%$



Detector Image: Radiant Intensity



Detector Image: Radiant Intensity

NOTE: The typical divergence will be changed by different color, chip size and chip position tolerance. The typical total divergence is the full angle measured where the luminous intensity is half of the peak value.