

ADuCM322 Development Systems Getting Started Tutorial

DEVELOPMENT SYSTEM KIT CONTENTS

An evaluation board (**EVAL-ADuCM322EBZ**) that facilitates performance evaluation of the device with a minimum of external components

An Analog Devices, Inc., Segger J-Link OB emulator (**USB-SWD/UART-EMUZ**)

1 USB cable

1 installation DVD

INTRODUCTION

The **ADuCM322** is an on-chip, dual-die stack system designed for diagnostic control on fixed wavelength laser optical module applications. It features a 16-bit (12-bit accurate) multichannel SAR analog-to-digital converter (ADC), an ARM® Cortex™-M3 processor, eight voltage digital-to-analog converters (DACs), four current output DACs, and flash/EE memory packaged in a 6 mm × 6 mm, 96-ball CSP_BGA package.

GENERAL DESCRIPTION

The **ADuCM322** development system evaluates the **ADuCM322**. This quick start guide introduces the support features and tools supplied with the evaluation kit. In addition, this guide shows and describes how to connect the evaluation hardware.

The getting started guide works as a tutorial, providing instructions on how to download third party evaluation software tools. Instructions are also provided on how to load code examples supplied with the software tools.

This guide gives users the ability to generate and download user code for use in unique end system requirements.

TYPICAL SETUP OF THE **EVAL-ADUCM322EBZ** AND J-LINK OB EMULATOR

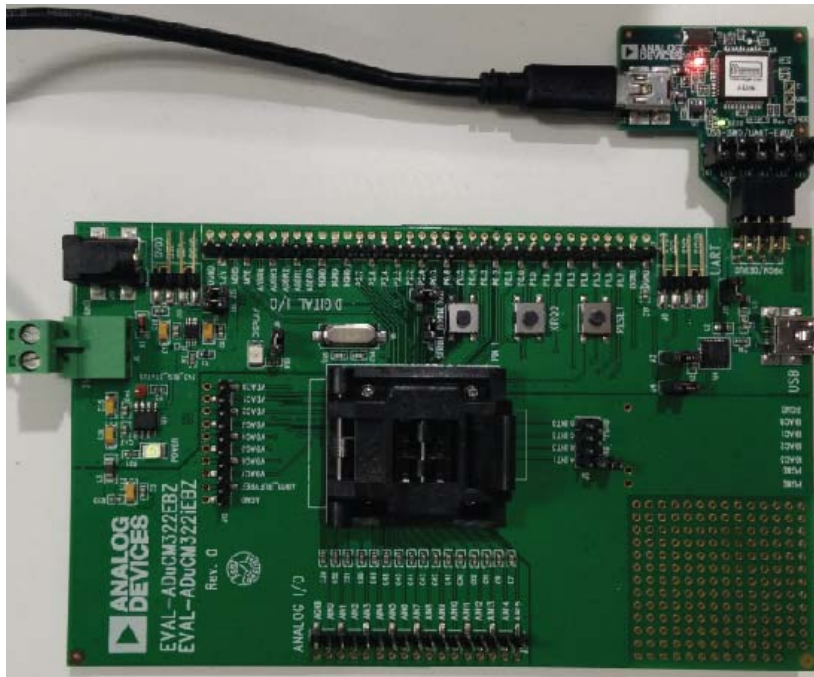


Figure 1.

TABLE OF CONTENTS

Development System Kit Contents	1	Getting Started.....	3
Introduction	1	Software Installation Procedures.....	3
General Description	1	Keil μ Vision5.....	3
Typical Setup of the EVAL-ADuCM322EBZ and J-Link OB Emulator	1	IAR EWARM.....	4
Revision History	2	Elves	4
		Evaluation Board Setup Procedures	4

REVISION HISTORY

2/16—Revision 0: Initial Version

GETTING STARTED

SOFTWARE INSTALLATION PROCEDURES

Perform the steps described in this section before plugging any of the USB devices into the PC.

1. Close all open applications.
2. Insert the installation DVD into a DVD drive.
3. Double-click **ADuCM310_32x.exe** and follow the on-screen instructions. A menu displays installation options as shown in Figure 2.

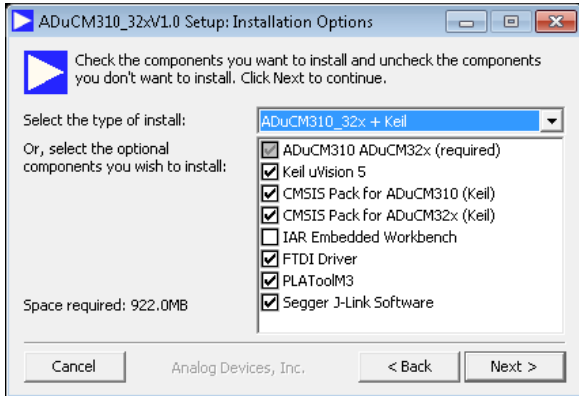


Figure 2. Installation Options

The following components install by default:

- FTDI drivers for the evaluation board.
- Example code and function sets for most peripherals.
- An **Elves.exe** application to easily choose functions from the provided function sets followed by choosing from the function parameters.

The following components are optional installations:

- Keil development tools (a compiler, debugger, and programming tools). The Keil software Revision v5.14 is used. Analog Devices added a patch to this revision of the MDK460 tools to support the **ADuCM322**.
- IAR development tools (a compiler, debugger, and programming tools).
- Segger J-Link drivers. These are the drivers for the J-Link emulator.

The J-Link software is selected by default in the installation menu shown in Figure 2. It is advised to leave it selected. The J-Link software automatically installs the J-Link serial port driver. Select **Install USB Driver for J-Link-OB with CDC** as shown in Figure 3. If that step is missed, run **JLinkCDCInstaller_V1.2b.exe** located in the **ADuCM322\Segger** folder.

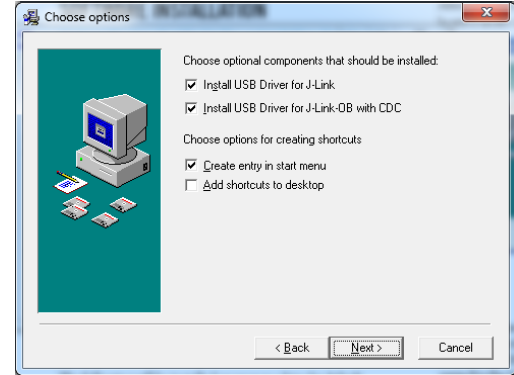


Figure 3. Installing Link Software

If using the IAR tools, the entire contents of the supplied **arm** directory (for example, **C:\ADuCM322... \IAR\IAR_M320_Patch0.2.zip\arm**) must be copied to the IAR tools directory (for example, **C:\Program Files\IAR Systems\ Embedded Workbench 6.5 Kickstart\arm**).

Future updates may be available from the Analog Devices **FTP** site.

KEIL μ VISION5

The Kiel μ Vision5 integrated development environment (IDE) integrates all the tools necessary to edit, assemble, and debug code. The fastest way to get started is to open an existing Kiel μ Vision5 project by following these steps:

1. In Keil μ Vision5, select **Project > Open Project**.
2. Browse to the folder where the **ADuCM322** software is installed (such as, **C:\ADuCM322...**).
3. Open the file **DIO.uvproj** in the folder **code\ADuCM322\examples\DIO**. This file launches an example project.
4. Compile and download to the device.
5. To run the example code, press **RESET** on the board or enter debug mode and select **Run**.
6. When running, the red LED marked **DISPLAY** on the board flashes.

IAR EWARM

The IAR EWARM IDE integrates all the tools necessary to edit, assemble, and debug code. The fastest way to get started is to open an existing workspace by following these steps:

1. Open the IAR tools from **C:\Program Files (x86)\IAR Systems\Embedded Workbench 6.5\common\binIarIdePm.exe**.
2. Within the IAR IDE, click **File > Open > workspace** and open a workspace provided by Analog Devices (for example, **C:\ADuCM322...\code\ADuCM322\examples\DIO\DIO.eww**).
3. Compile and download the code to the device using **Project > Rebuild All** and then to **Project > Download Active Application**.
4. Click **No** if a pop-up window appears identifying an unknown device.
5. To run the code, press **RESET** on the board or enter debug mode and select **Go**.
6. When running, the red LED marked **DISPLAY** on the board flashes.

ELVES.EXE

Elves.exe is an application that chooses functions from the provided function sets and function parameters. Elves.exe can be integrated into the Keil μ Vision5 and IAR tools under the tool menu. For instructions, run **Elves.exe** (for example, at **C:\ADuCM322...\Software Tools\Elves\Elves.exe**) and press the **F1** key or click the **Help** button.

EVALUATION BOARD SETUP PROCEDURES

Assembling and Connecting the Hardware

Do not plug in the USB cable before the software is installed. Use the following steps to connect the hardware:

1. Insert the USB cable provided between the PC and the J-Link OB emulator (emulator shown in Figure 4).
2. The red LED (LED1) flashes until initialization of the drivers is complete.
3. Details for installation of the drivers may appear on the screen. Allow the installation of these drivers to complete as they provide a virtual communication port on the PC that allows the evaluation board to appear as a virtual serial communication port to the UART port of the **ADuCM322** device.
4. If using the virtual serial communication port to the UART, ensure Jumpers LK3 and LK5 are in place on the board (see Figure 5). If using the UART on the J8 connector, remove Jumpers LK3 and LK5 to prevent contention.
5. Plug the 10-pin DIL connector of the J-Link OB emulator into the **EVAL-ADuCM322EBZ**.
6. To power up the evaluation board, apply a voltage between 4 V and 5.5 V to the J5 connector or a voltage between 4.7 V and 6.2 V to the J14 connector. The green **POWER** LED turns on.

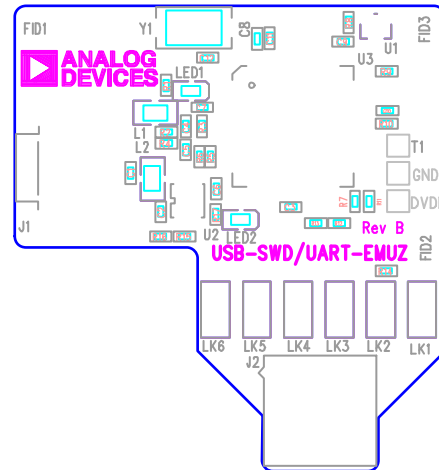
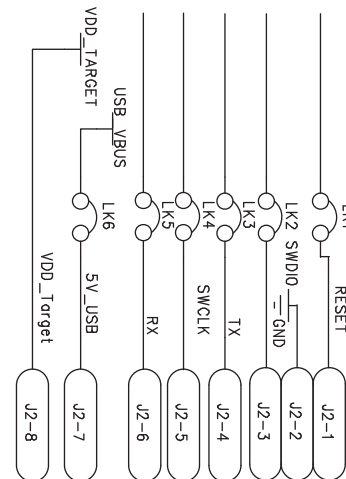


Figure 4. Emulator, Top View



TO MINIKIT BOARD CONNECTOR

Figure 5. J-Link OB Connection Details

Evaluating the MSDIO Download Mode

To evaluate the MSDIO download mode using the MDIOWSD software, use the SUB-20 multi interface USB adapter (not included). This allows connectivity between the ADuCM322 evaluation board and PC via the MDIOWSD software. The following is the procedure to download code to the device using the MSDIO interface.

1. Connect the relevant pins of the SUB-20 board to the pins of the EVAL-ADuCM322EBZ as detailed in Table 1.

Table 1. Pin Connection Guide

EVAL-ADuCM322EBZ Pins	SUB-20 Pins
DGND	J6-10
1.2 V	J6-9
MDIO	J6-7
MCK	J6-1

2. On the SUB-20 board, ensure
 - a. Pin J7 is set to 3.3 V.
 - b. Pins JP1, JP2 JP3, JP4, and JP5 are set to connect Pin 1 to Pin 2.
 - c. Pin JP6 is set to connect Pin 2 to Pin 3.
3. Connect the USB cable from the PC to the SUB-20 board and run `C:\ADuCM322...\Software Tools\MDIOWSD\MDIOWSD.exe`
4. Click **Browse** and navigate to a specific code to download.
5. To download the code, select **Program and Verify, Start** and follow the instructions.



ESD Caution

ESD (electrostatic discharge) sensitive device. Charged devices and circuit boards can discharge without detection. Although this product features patented or proprietary protection circuitry, damage may occur on devices subjected to high energy ESD. Therefore, proper ESD precautions should be taken to avoid performance degradation or loss of functionality.

Legal Terms and Conditions

By using the evaluation board discussed herein (together with any tools, components documentation or support materials, the "Evaluation Board"), you are agreeing to be bound by the terms and conditions set forth below ("Agreement") unless you have purchased the Evaluation Board, in which case the Analog Devices Standard Terms and Conditions of Sale shall govern. Do not use the Evaluation Board until you have read and agreed to the Agreement. Your use of the Evaluation Board shall signify your acceptance of the Agreement. This Agreement is made by and between you ("Customer") and Analog Devices, Inc. ("ADI"), with its principal place of business at One Technology Way, Norwood, MA 02062, USA. Subject to the terms and conditions of the Agreement, ADI hereby grants to Customer a free, limited, personal, temporary, non-exclusive, non-sublicensable, non-transferable license to use the Evaluation Board FOR EVALUATION PURPOSES ONLY. Customer understands and agrees that the Evaluation Board is provided for the sole and exclusive purpose referenced above, and agrees not to use the Evaluation Board for any other purpose. Furthermore, the license granted is expressly made subject to the following additional limitations: Customer shall not (i) rent, lease, display, sell, transfer, assign, sublicense, or distribute the Evaluation Board; and (ii) permit any Third Party to access the Evaluation Board. As used herein, the term "Third Party" includes any entity other than ADI, Customer, their employees, affiliates and in-house consultants. The Evaluation Board is NOT sold to Customer; all rights not expressly granted herein, including ownership of the Evaluation Board, are reserved by ADI. CONFIDENTIALITY. This Agreement and the Evaluation Board shall all be considered the confidential and proprietary information of ADI. Customer may not disclose or transfer any portion of the Evaluation Board to any other party for any reason. Upon discontinuation of use of the Evaluation Board or termination of this Agreement, Customer agrees to promptly return the Evaluation Board to ADI. ADDITIONAL RESTRICTIONS. Customer may not disassemble, decompile or reverse engineer chips on the Evaluation Board. Customer shall inform ADI of any occurred damages or any modifications or alterations it makes to the Evaluation Board, including but not limited to soldering or any other activity that affects the material content of the Evaluation Board. Modifications to the Evaluation Board must comply with applicable law, including but not limited to the RoHS Directive. TERMINATION. ADI may terminate this Agreement at any time upon giving written notice to Customer. Customer agrees to return to ADI the Evaluation Board at that time. LIMITATION OF LIABILITY. THE EVALUATION BOARD PROVIDED HEREUNDER IS PROVIDED "AS IS" AND ADI MAKES NO WARRANTIES OR REPRESENTATIONS OF ANY KIND WITH RESPECT TO IT. ADI SPECIFICALLY DISCLAIMS ANY REPRESENTATIONS, ENDORSEMENTS, GUARANTEES, OR WARRANTIES, EXPRESS OR IMPLIED, RELATED TO THE EVALUATION BOARD INCLUDING, BUT NOT LIMITED TO, THE IMPLIED WARRANTY OF MERCHANTABILITY, TITLE, FITNESS FOR A PARTICULAR PURPOSE OR NON-INFRINGEMENT OF INTELLECTUAL PROPERTY RIGHTS. IN NO EVENT WILL ADI AND ITS LICENSORS BE LIABLE FOR ANY INCIDENTAL, SPECIAL, INDIRECT, OR CONSEQUENTIAL DAMAGES RESULTING FROM CUSTOMER'S POSSESSION OR USE OF THE EVALUATION BOARD, INCLUDING BUT NOT LIMITED TO LOST PROFITS, DELAY COSTS, LABOR COSTS OR LOSS OF GOODWILL. ADI'S TOTAL LIABILITY FROM ANY AND ALL CAUSES SHALL BE LIMITED TO THE AMOUNT OF ONE HUNDRED US DOLLARS (\$100.00). EXPORT. Customer agrees that it will not directly or indirectly export the Evaluation Board to another country, and that it will comply with all applicable United States federal laws and regulations relating to exports. GOVERNING LAW. This Agreement shall be governed by and construed in accordance with the substantive laws of the Commonwealth of Massachusetts (excluding conflict of law rules). Any legal action regarding this Agreement will be heard in the state or federal courts having jurisdiction in Suffolk County, Massachusetts, and Customer hereby submits to the personal jurisdiction and venue of such courts. The United Nations Convention on Contracts for the International Sale of Goods shall not apply to this Agreement and is expressly disclaimed.