

PART NUMBER	REV	FIRST USED	TERMINATOR	FEED TYPE	DESCRIPTION
1339634-1	C		- BENCH & LEADMAKER	MECH POST FEED	HD-I APPLICATOR
7-1339634-1	C		- BENCH & LEADMAKER	MECH POST FEED	-1 AND SPARE PARTS
7-1339634-7	A		-	-	SPARE PARTS KIT



**CRIMP DATA AMP TERMINAL AMP CRIMP SPECS**

TERMINAL NAME: .250" SERIES FASTON REC.

CRIMP	SIZE	TYPE	RANGE
WIRE	2.29 [.090 IN]	F	0.32-0.80mm <sup>2</sup>
INSUL	3.30 [.130 IN]	F	2.30-3.30 [.090-.130 IN]

WIRE STRIP LENGTH: 4.80-5.60 [.189-.220 IN]      APPL INSTRUCTION: 408-8323

TERMINAL APPL SPEC: 114-3118      FEED: 18.80 [.740 IN]

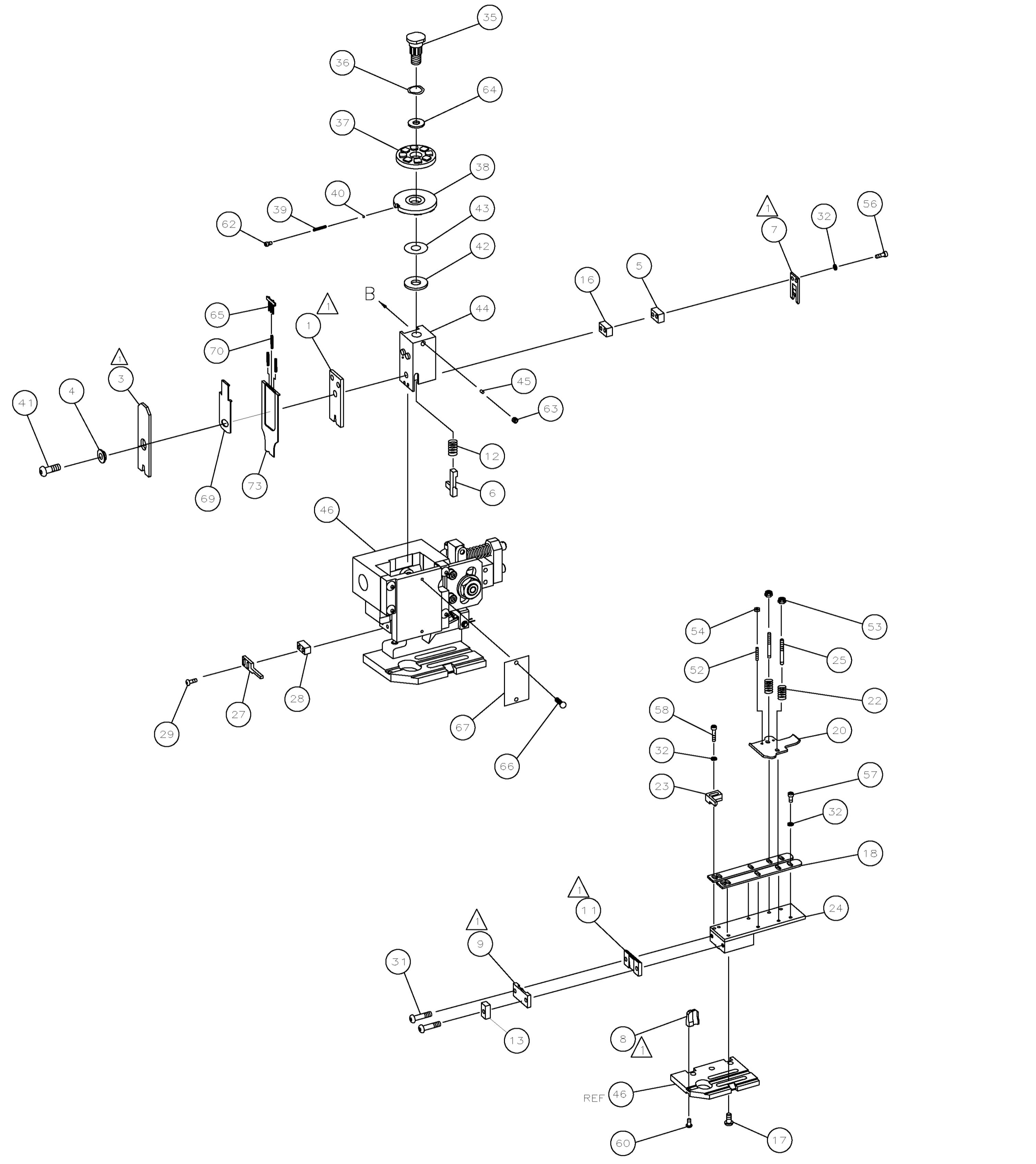
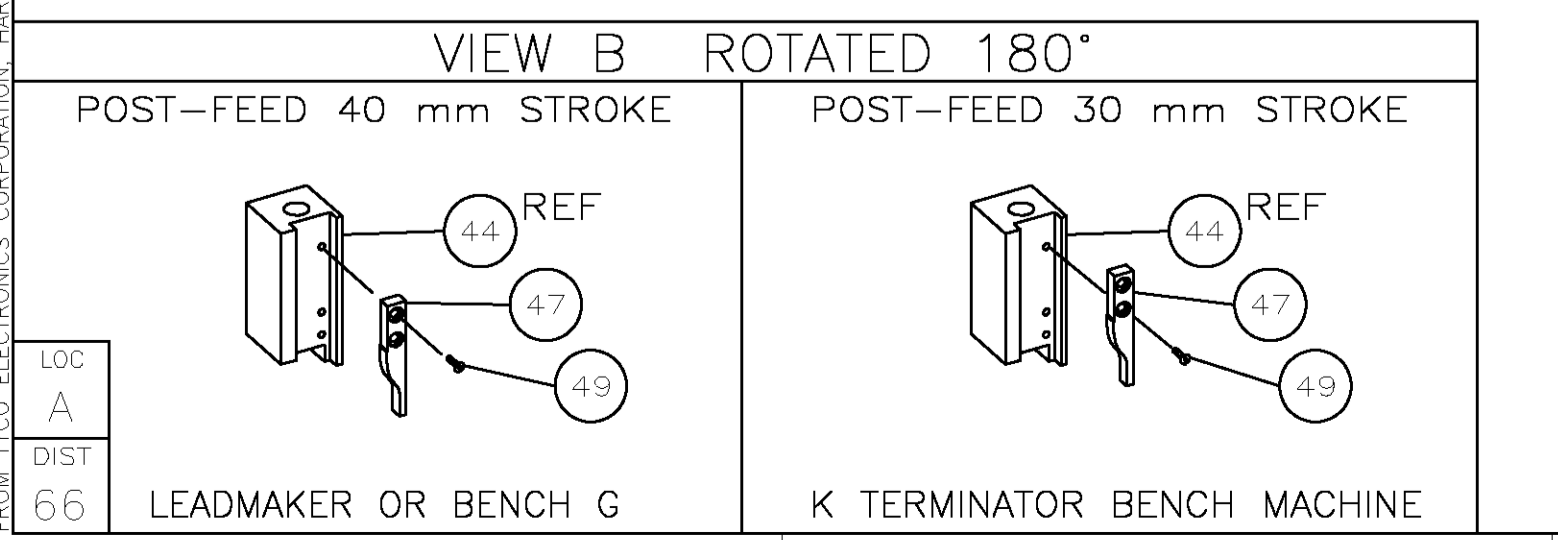
**TERMINALS APPLIED**

Terminal Part No.	Wire Size	Wire Length	Terminal Type
336235	-	-	-
735209	-	-	-
737439	-	-	-
737669	-	-	-
444334	-	-	-

WIRE SIZE mm <sup>2</sup> AWG	CRIMP HEIGHT	PIN PN AND LENGTH [IN]
0.80mm <sup>2</sup>	1.42 ±0.05 [.056 ±.002 IN]	1-354779-7 [.3075]
0.50mm <sup>2</sup>	1.32 ±0.05 [.052 ±.002 IN]	2-354779-7 [.3125]
0.32mm <sup>2</sup>	1.20 ±0.05 [.047 ±.002 IN]	4-354779-1 [.3195]

SET UP GAGE: 458638-3      LAYOUT: L1339634

- RECOMMENDED SPARE PARTS.
- GREASE RAM, CAM, CAM FOLLOWER AND FEED ROD LIGHTLY.
  - LUBRICATE DAILY PER THE APPLICATOR INSTRUCTION SHEET SUPPLIED WITH THE APPLICATOR.



QTY	RECD	PER ASSY	PART NO	DESCRIPTION	ITEM NO	
-	1	1	1490525-1	DEPRESSOR, WIRE	73	
-	1	1	1339634	PRINT, APPLICATOR LOG SHEET	72	
-	1	1	1338705-2	DOCUMENTATION PACKAGE	71	
-	3	3	2-23147-2	SPRING, DEPRESSOR	70	
-	1	1	1490524-2	SPACER, DEPRESSOR	69	
-	1	1	461264-1	PLATE, IDENTIFICATION	68	
-	2	2	21017-2	SCR,DRIVE(#2X.19)ID PLATE	66	
-	1	1	1424350-1	HOLDER, PIN, WIRED	65	
-	1	1	986950-1	WASHER, FLAT PRECISION	64	
-	1	1	3-18031-0	SCR,SKT SET(M6X6)RAM	63	
-	1	1	18023-9	SCR,SKT CAP(M4X6)CP DSC	62	
-	1	1	18024-7	SCR,BHC(M4X10)ANVIL	60	
-	2	2	1-18023-3	SCR,SHC(M4X16)HOLD DOWN	58	
-	5	5	18023-9	SCR,SHC(M4X6)STRIP GUIDE	57	
-	2	2	1-18023-1	SCR,SHC(M4X10)SLUG BLADE	56	
-	2	2	18029-1	NUT,HEX(M3)DRAG	54	
-	2	2	986965-1	NUT,HEX SL(M4)DRAG STUD	53	
-	2	2	2-18032-2	SCR,SKT SET(M3X10)DRAG	52	
-	1	1	18024-3	SCR,BHC(M3X10)CAM	49	
-	1	1	1338676-1	CAM, POST-FEED 30 & 40 mm ST	47	
-	1	1	1338662-1	APPLICATOR, BASIC (SUBASSY)	46	
-	1	1	690191-1	PLUG, NYLON	45	
-	1	1	1320998-1	RAM	44	
-	1	1	690125-1	WASHER, LAMINATED	43	
-	1	1	690124-1	WASHER, RAM	42	
-	1	1	2-18024-6	SCREW,BHC(M8X25)CRIMPER	41	
-	1	1	23241-1	BALL, STEEL	40	
-	1	1	2-22278-7	SPRING, COMPRESSION	39	
-	1	1	1320922-1	DISC, INSULATION	38	
-	1	1	354777-1	WIRE DISC, PLASTIC	37	
-	1	1	22480-5	WASHER, SPRING	36	
-	1	1	690212-1	POST, RAM	35	
-	9	9	18025-2	WASHER,LOCK(M4)SHEAR BL	32	
-	2	2	1-18024-0	SCR,BHC(M4X20)SHEAR PL	31	
-	2	2	18024-8	SCR,BHC(M4X12)STRIPPER	29	
-	1	1	3-690451-2	SPACER, STRIPPER	28	
-	1	1	240639-1	STRIPPER	27	
-	2	2	1320906-1	DRAG, STUD	25	
-	1	1	1320995-1	STRIP GUIDE	24	
-	1	1	240825-2	PLATE, STRIP HOLD DOWN	23	
-	2	2	4-22281-1	SPRING, DRAG	22	
-	1	1	1338665-1	DRAG, STOCK	20	
-	2	2	1338663-5	GUIDE, LOWER STRIP	18	
-	4	4	1-18024-8	SCR,BHC(M6X12)STRIP GD PL	17	
-	1	1	1338708-1	SPACER, SLUG BLADE	16	
-	1	1	690481-3	SPACER, HOLD DOWN	15	
-	1	1	23846-1	SPRING, HOLD DOWN	14	
-	1	1	240644-1	PLATE, REAR SHEAR	13	
-	1	1	1-690495-5	PLATE, FRONT SHEAR	12	
-	1	1	1333217-2	ANVIL	11	
-	1	1	690474-8	BLADE, SLUG	10	
-	1	1	3-455892-7	HOLD DOWN, TERMINAL	9	
-	1	1	240641-9	SPACER, SLUG BLADE	8	
-	1	1	238009-1	SPACER, BLOCK CRIMPER	7	
-	1	2	5-683453-4	CRIMPER, INSULATION	6	
-	1	2	1-456406-2	CRIMPER, WIRE	5	
-	77	-71	-1	PART NO	DESCRIPTION	ITEM NO

**PARTS LIST**

QTY RECD PER ASSY

DWN: M. CLIFFORD      11MAR02      MATERIAL: -      HEAT TREAT: -

CHK: -

APVD: F. BACKHURST      11MAR02

NAME: F. BACKHURST      END FEED HD-I APPLICATOR

SCALE: -      SIZE: A1      DRAWING NO: 1339634      SHEET: 1 of 1      REV: C1

14JAN2010 8:49am

**CUSTOMER ACCESSIBLE PRODUCTION DRAWING**

THIS INFORMATION IS CONFIDENTIAL AND PROPRIETARY TO TYCO ELECTRONICS CORPORATION AND ITS WORLDWIDE SUBSIDIARIES AND AFFILIATES. IT MAY NOT BE DISCLOSED TO ANY OTHER PERSON OR ENTITY WITHOUT THE WRITTEN AUTHORIZATION OF TYCO ELECTRONICS CORPORATION, HARRISBURG, PENNSYLVANIA, USA.