

A

B

C

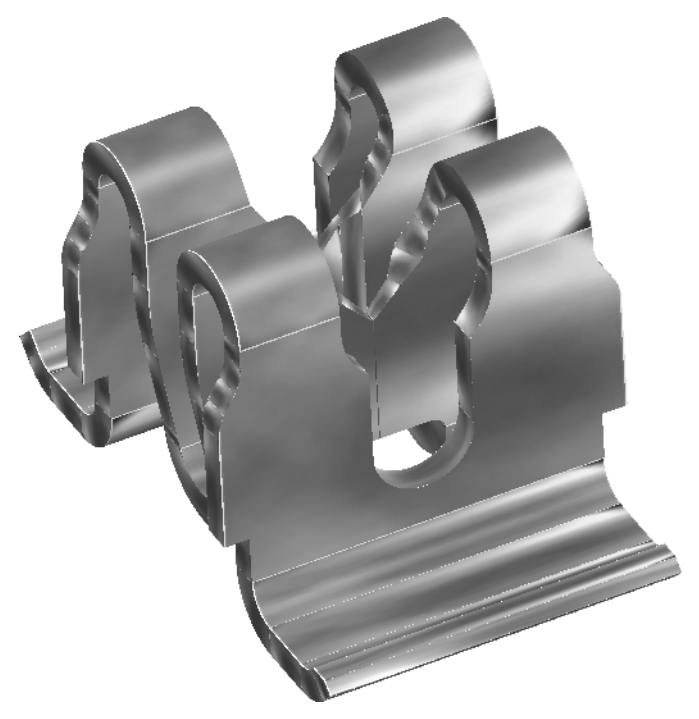
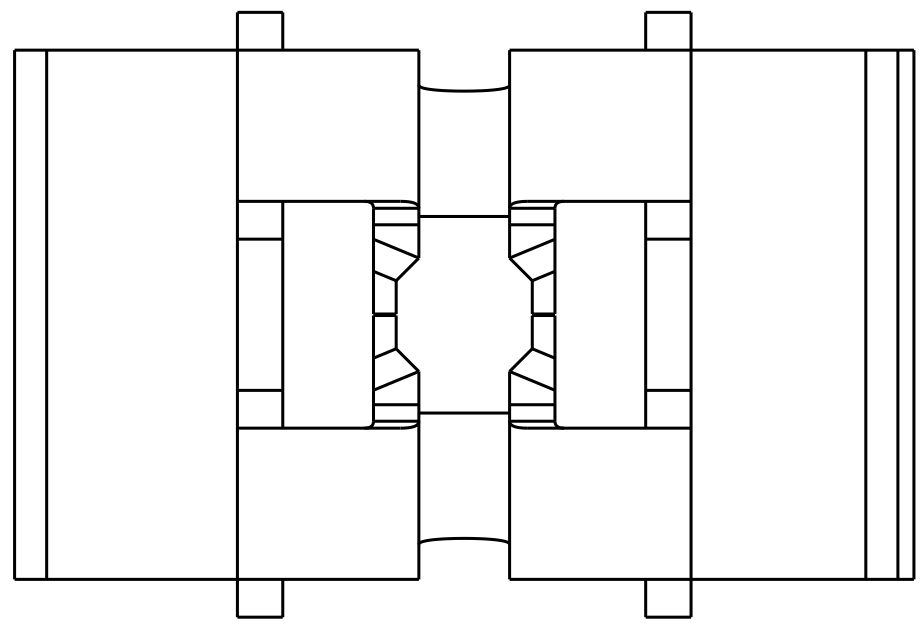
D

A

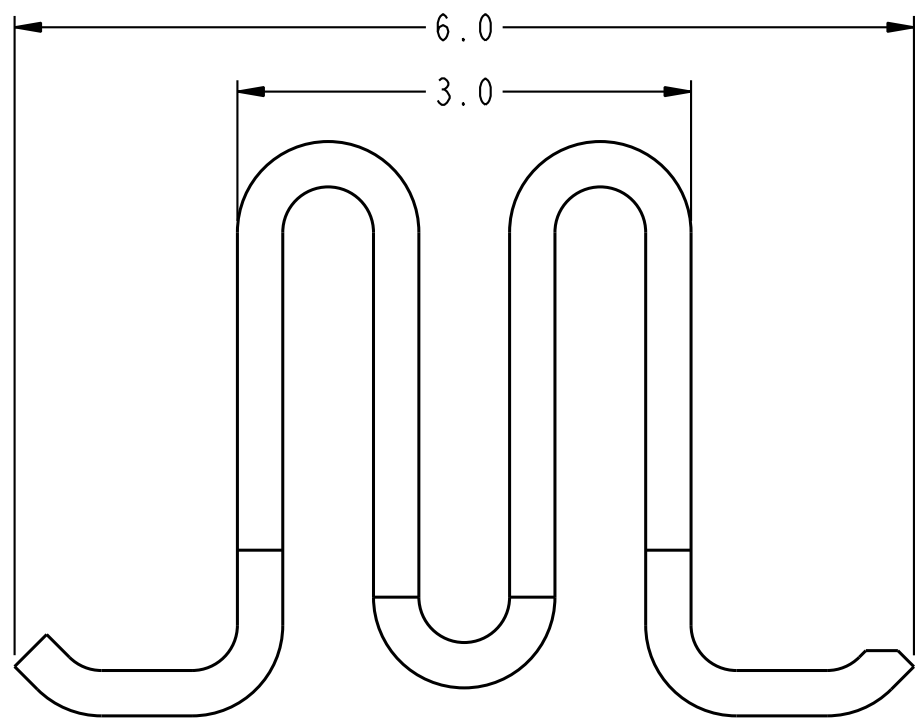
B

C

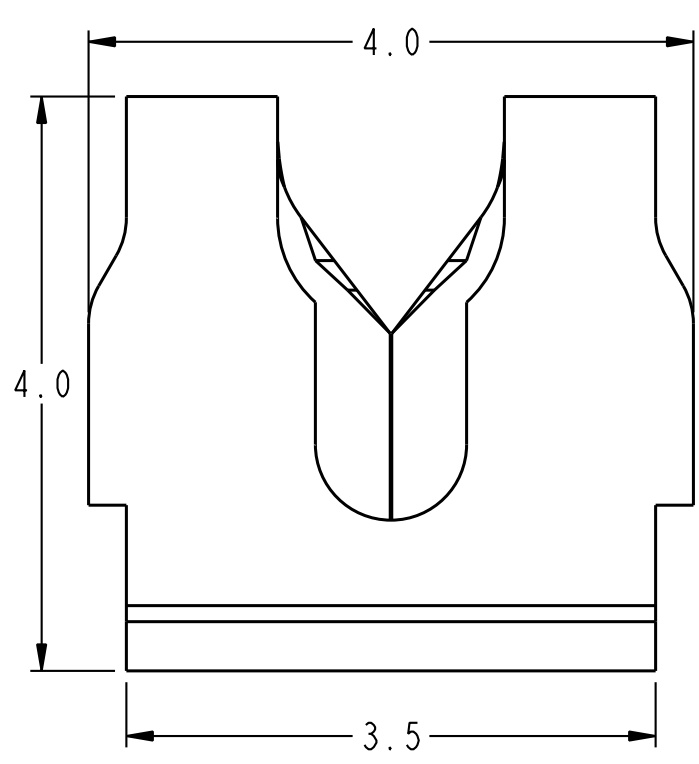
D



SCALE 15:1



SCALE 20:1

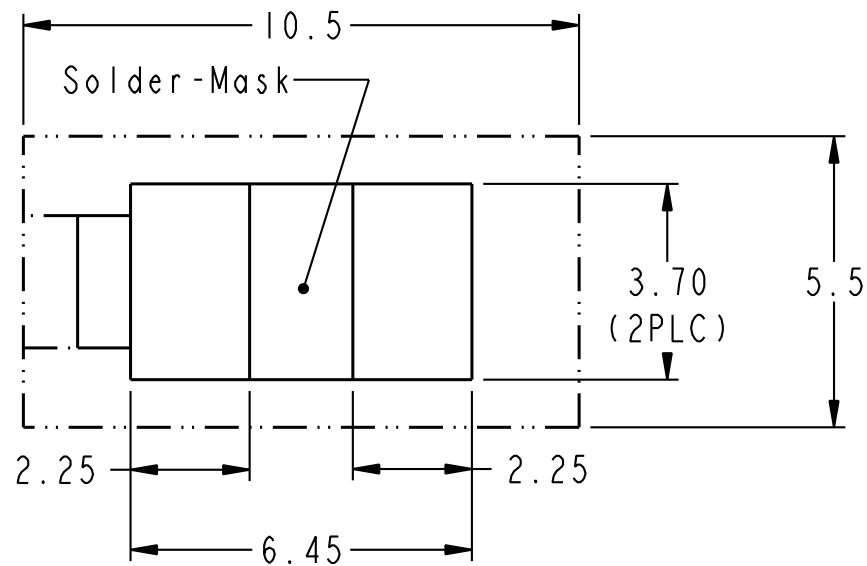


PART NUMBER	QUANTITY	DESCRIPTION	NOTES
-00ITRLF	1,150	WITHOUT PICK & PLACE CAP, IN TAPE & REEL	△3
-10ITRLF	1,150	WITH PICK & PLACE CAP, IN TAPE & REEL	△3
-10ILF	1	SINGULATED	△10
-00ILF	7,500	ON REEL	△9

spec ref	-	dr	James Sabo	2014/03/17	projection	mm	size	A3	scale	10:1
tolerance std	ISO 406 ISO 1101	eng	James Sabo	2015/08/10			ecn no	ELX-V-20987-1		
TOLERANCES UNLESS OTHERWISE SPECIFIED		chr	-	-			rel level	Released		
surface	ISO 1302	appr	R Marshall	2015/08/10	product family	-	rel level	Released		
linear	0.X ±0.3 0.XX ±0.05 0.XXX ±0.025			title	TERMINAL, GRIPLET,™ SMT			dwg no	10127850C	
angular	0° ±2°	www.fci.com		cat. no.	-	Product - Customer Drw	rev	B		
sheet 1 of 3										

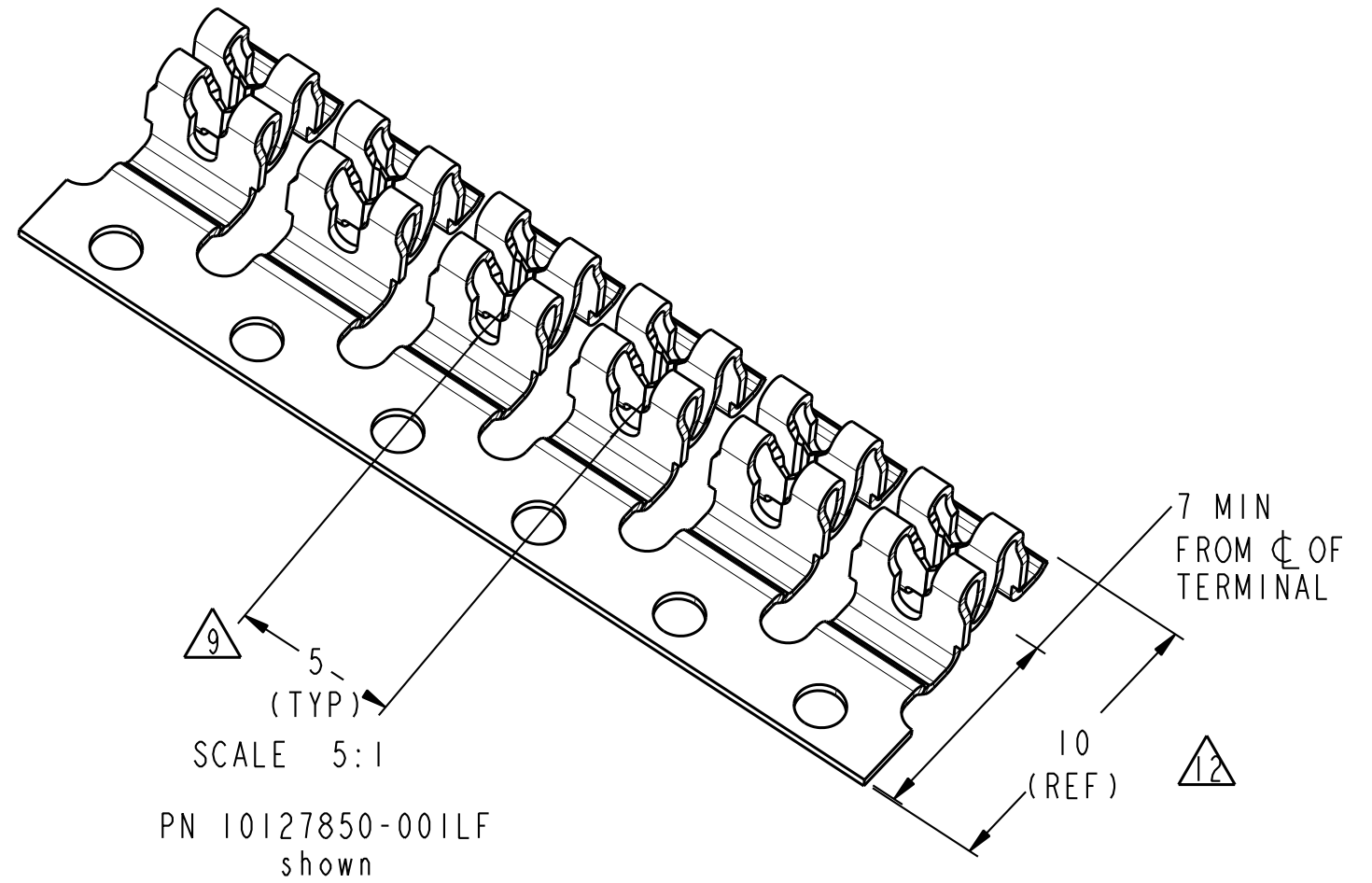


Copyright FCI.



△11 △14 RECOMMENDED SOLDER-PAD FOOTPRINT AND KEEP-OUT ZONE FOR WIRE INSTALLATION TOOL.

1. CONNECTOR MATERIAL: COPPER ALLOY
2. PLATING: TIN OVER NICKEL.
3. PRODUCT SPECIFICATION: GS-12-1234.
4. PACKAGING MEETS GS-14-920 LEAD-FREE LABELING SPECIFICATION.
5. PRODUCT MARKING: N/A
6. MINIMUM CENTERLINE SPACING BETWEEN ADJACENT TERMINALS IS 5MM.
7. WIRE INSERTION TOOL REQUIRES KEEP-OUT ZONE AS SHOWN.
8. LEAD-FREE PRODUCT MEETS THE EUROPEAN UNION DIRECTIVES & OTHER COUNTRY REGULATIONS AS DESCRIBED IN GS-22-008.



△9 AVAILABLE ON 24 INCH REEL, QUANTITY 7500 PER REEL.  
REELING SPECIFICATION: GS-14-2273 AND FCI  
PACKAGING SPECIFICATION GS-14-2461.

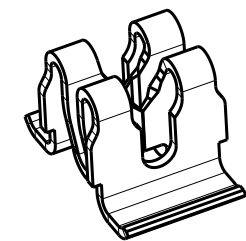
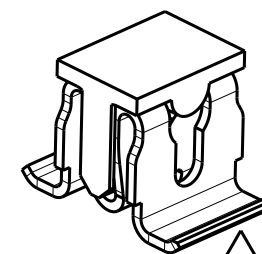
△10 AVAILABLE LOOSE-IN-BAG. PACKAGE QUANTITY 1000 PER BAG.

△11 RECOMMENDED KEEP-OUT ZONE FOR WIRE-INSTALLATION TOOL.

△12 DIMENSIONS FOR TERMINALS PRIOR TO BREAK-OFF FROM CARRIER.

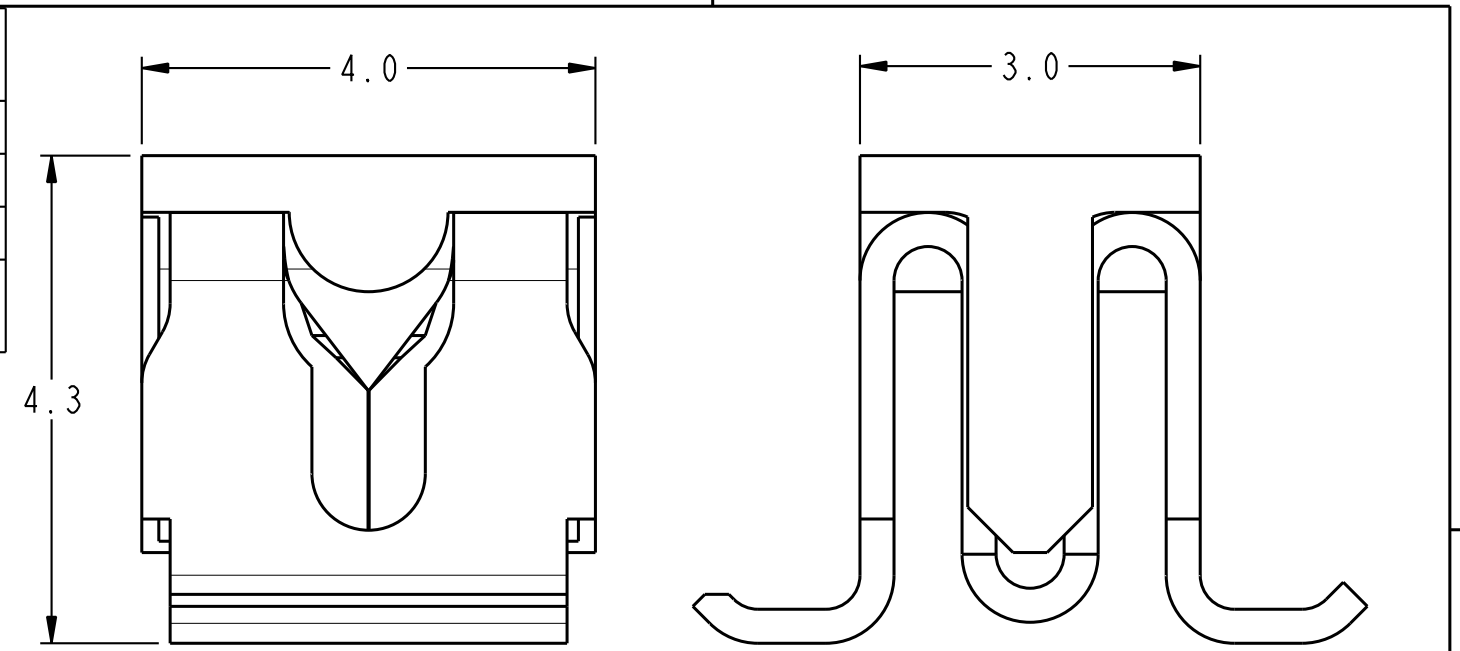
△13 AVAILABLE WITH AND WITHOUT PICK & PLACE CAPS  
ON 13 INCH DIAMETER REEL,  
SEE TABLE FOR QUANTITY PER REEL.  
TAPE & REEL SPECIFICATION: EIA-481B AND  
FCI PACKAGING SPECIFICATION GS-14-2461.

△14 RECOMMENDED NOMINAL SOLDER  
STENCIL THICKNESS:  
0.127MM (0.005 INCH)

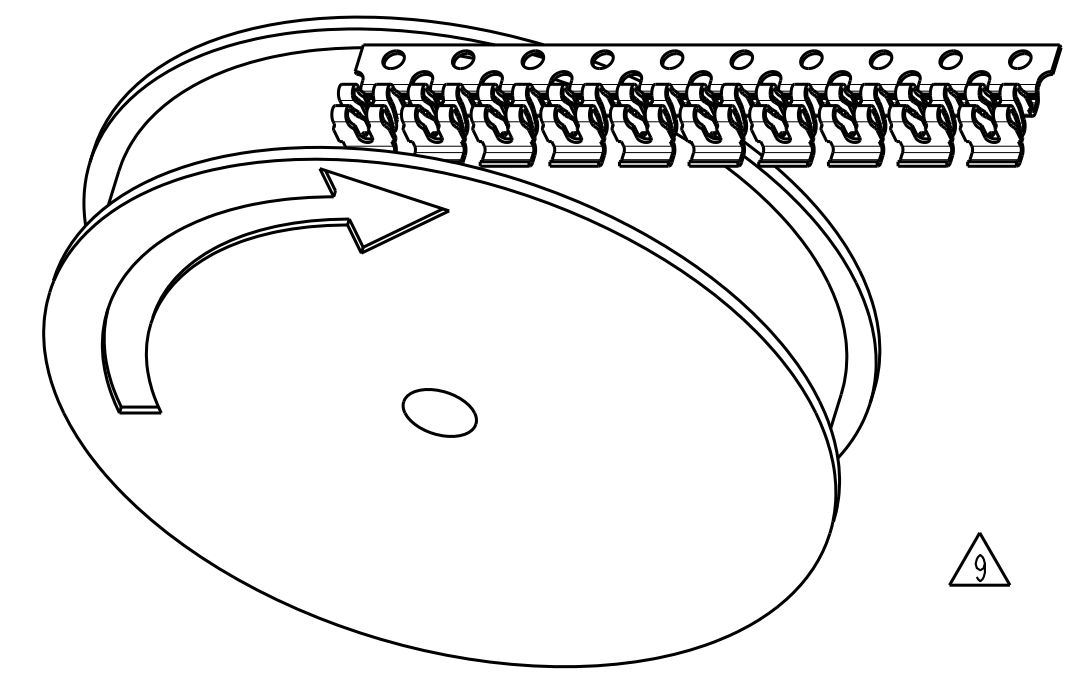


spec ref	-	dr	James Sabo	2014/03/17	projection	mm	size	A3	scale	10:1	
tolerance std	ISO 406 ISO 1101	eng	James Sabo	2015/08/10			ecn no	ELX-V-20987-1			
TOLERANCES UNLESS OTHERWISE SPECIFIED		chr	-	-			rel level	Released			
surface	ISO 1302	appr	R Marshall	2015/08/10	product family	-	dwg no	10127850C		rev	B
	linear	0.X	±0.3		TERMINAL, GRIPLET,™ SMT		cat. no. - Product - Customer Drw	sheet 2 of 3			
		0.XX	±0.05		20-32AWG						
	angular	0°	±2°		www.fci.com						

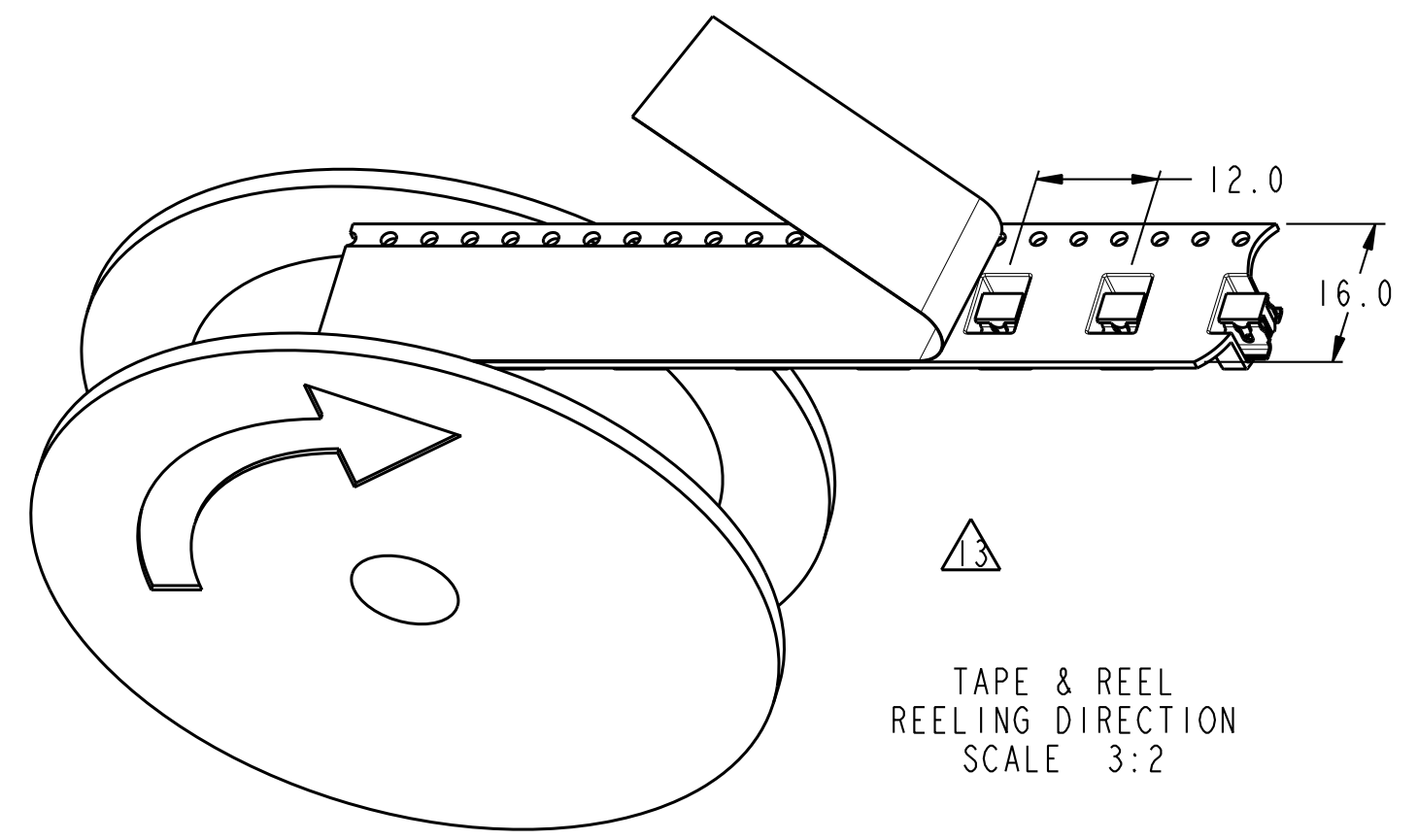
REV	DATE	RESPONSIBLE ENGINEER	PURPOSE
1	21FEB2014	J. SABO	ORIGINAL
2	31OCT2014	J. SABO	ADD COINING. REV SOLDER-PAD.
A	13APR2015	J. SABO	ADD T&R AND T-CAP.
B	03JUN2015	J. SABO	DIMENSION T-CAP. ADD AS-STAMPED REELING. ADDED PN FOR W/O CAP IN T&R.



PICK & PLACE  
T-CAP SEATING  
SCALE 15:1



AS-STAMPED  
REELING DIRECTION  
SCALE 2:1



TAPE & REEL  
REELING DIRECTION  
SCALE 3:2

spec ref	-	dr	James Sabo	2014/03/17	projection	mm	size	A3	scale	10:1	
tolerance std	ISO 406 ISO 1101	eng	James Sabo	2015/08/10			ecn no	ELX-V-20987-1			
TOLERANCES UNLESS OTHERWISE SPECIFIED		chr	-	-			rel level	Released			
surface	ISO 1302	appr	R Marshall	2015/08/10	product family	-	dwg no	10127850C		rev	B
	linear	0.X	±0.3		title		TERMINAL, GRIPLET, SMT		cat. no. - Product - Customer Drw	sheet 3 of 3	
		0.XX	±0.05		20-32AWG						
	angular	0°	±2°		www.fci.com						