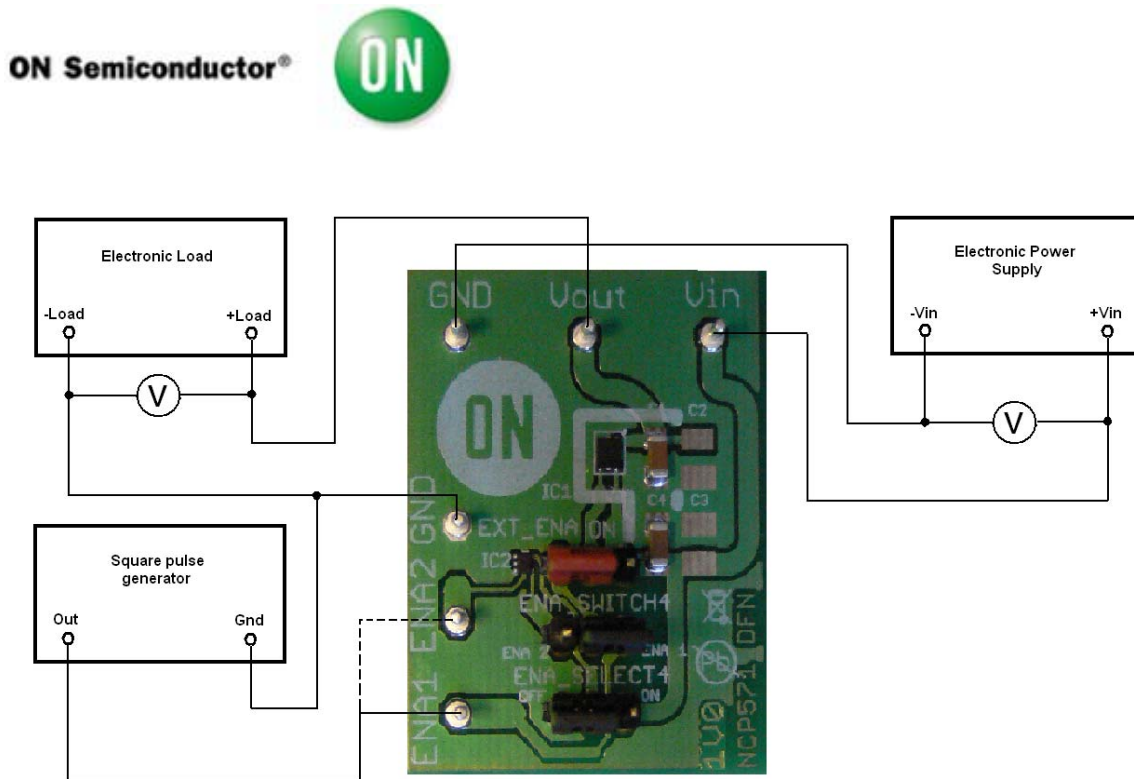


Test Procedure for NCP571 DFN6 1V0 LDO Demoboard



1. Enable pin connected to Vin

1. Check the position of jumper and correct it if necessary.

- a) **EXT_ENA** - ON
- b) **ENA_SELECT** - ENA1 or ENA2
- c) **POWER ENA2** - OFF

2. Connect the test setup as shown Figure 1

3. Apply an input voltage **Vin = 2.7 V**

4. Apply Iout = 0mA load.

5. Check that Vout is **1.0 V**.

6. Increase Iout up to **150 mA**

7. Increase Vin up to **12 V** and decrease the load in accordance with SOA

8. Power down the Load

9. Power down the Vcc

10. End of test

