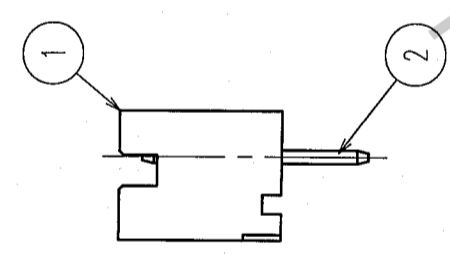
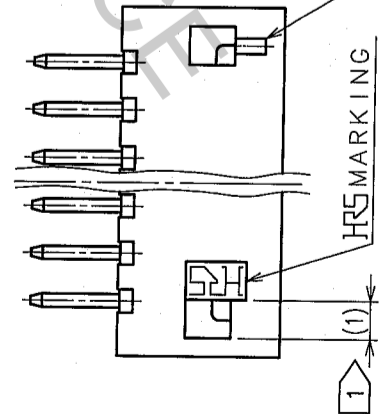
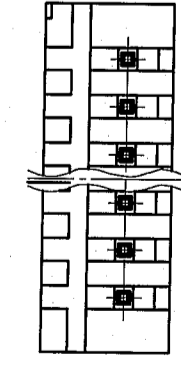
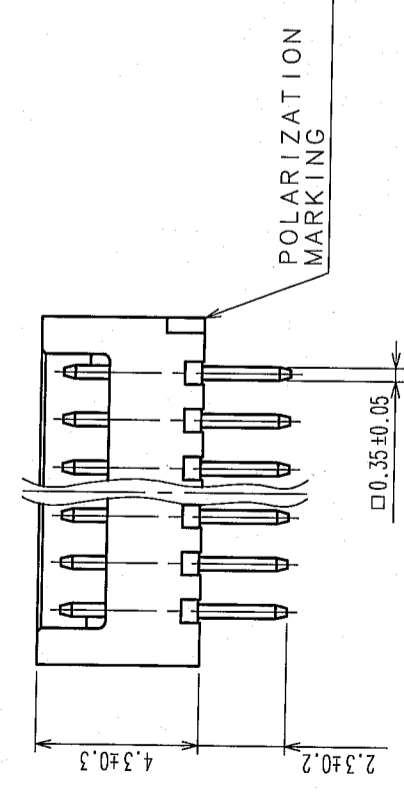
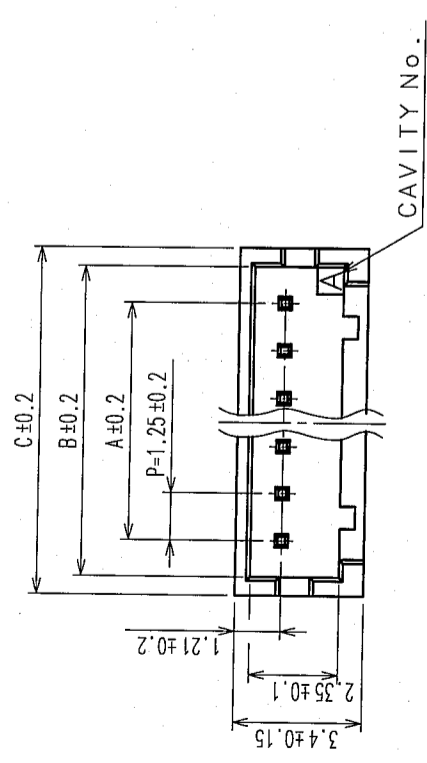
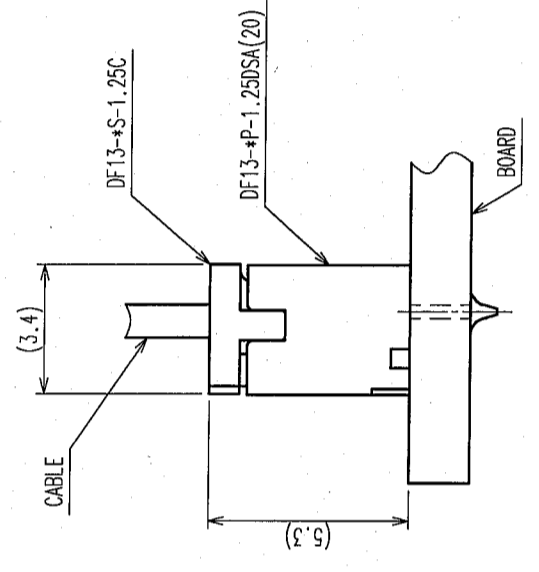


| COUNT | DESCRIPTION OF REVISIONS | BY | CHKD | DATE | COUNT | DESCRIPTION OF REVISIONS | BY | CHKD | DATE |
|-------|--------------------------|----|------|------|-------|--------------------------|----|------|------|
| △     |                          |    |      |      | △     |                          |    |      |      |
| △     |                          |    |      |      | △     |                          |    |      |      |
| △     |                          |    |      |      | △     |                          |    |      |      |

| PART No.             | CODE No.        | NUMBER OF CONTACTS | A     | B     | C     |
|----------------------|-----------------|--------------------|-------|-------|-------|
| DF13-2P-1.25DSA(20)  | CL536-0101-9-20 | 2                  | 1.25  | 3.15  | 4.15  |
| DF13-3P-1.25DSA(20)  | CL536-0102-1-20 | 3                  | 2.5   | 4.4   | 5.4   |
| DF13-4P-1.25DSA(20)  | CL536-0103-4-20 | 4                  | 3.75  | 5.65  | 6.65  |
| DF13-5P-1.25DSA(20)  | CL536-0104-7-20 | 5                  | 5     | 6.9   | 7.9   |
| DF13-6P-1.25DSA(20)  | CL536-0105-0-20 | 6                  | 6.25  | 8.15  | 9.15  |
| DF13-7P-1.25DSA(20)  | CL536-0106-2-20 | 7                  | 7.5   | 9.4   | 10.4  |
| DF13-8P-1.25DSA(20)  | CL536-0107-5-20 | 8                  | 8.75  | 10.65 | 11.65 |
| DF13-9P-1.25DSA(20)  | CL536-0108-8-20 | 9                  | 10    | 11.9  | 12.9  |
| DF13-10P-1.25DSA(20) | CL536-0109-0-20 | 10                 | 11.25 | 13.15 | 14.15 |
| DF13-11P-1.25DSA(20) | CL536-0110-0-20 | 11                 | 12.5  | 14.4  | 15.4  |
| DF13-12P-1.25DSA(20) | CL536-0111-2-20 | 12                 | 13.75 | 15.65 | 16.65 |
| DF13-13P-1.25DSA(20) | CL536-0112-5-20 | 13                 | 15    | 16.9  | 17.9  |
| DF13-14P-1.25DSA(20) | CL536-0113-8-20 | 14                 | 16.25 | 18.15 | 19.15 |
| DF13-15P-1.25DSA(20) | CL536-0114-0-20 | 15                 | 17.5  | 19.4  | 20.4  |



2 APPLICATION FIGURE



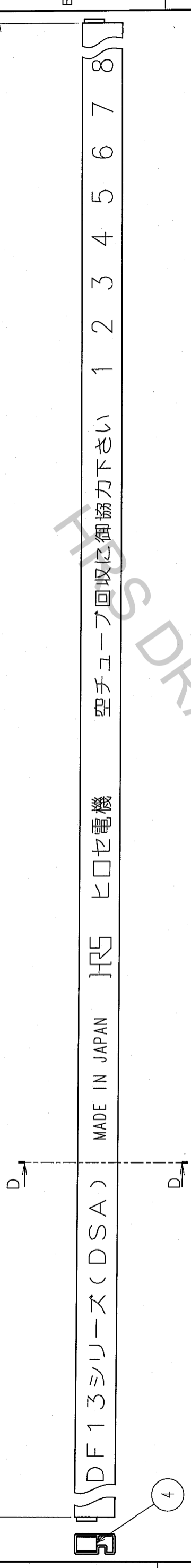
- 1 WHEN THIS CONNECTOR HAS TWO OR THREE CONTACTS, THE LOCK OF CONNECTOR SHALL BE SET AT THE CENTER OF HOUSING. IN CASE THAT THE NUMBER OF CONTACTS IS MORE THAN FOUR, THE TWO LOCKS SHALL BE SET IN ACCORDANCE WITH THE DRAWINGS.
- 2 WHEN THIS CONNECTOR MATES WITH DF13-\*S-1.25C, THE MATING LENGTH IS 5.3mm.
- 3 RECOMMENDED DIP POST DIA. : φ 0.6±0.03

|                |           |                              |                |                           |                                 |
|----------------|-----------|------------------------------|----------------|---------------------------|---------------------------------|
| 2              | BRASS     | SURFACE: TIN PLATED 1μm min. | 4              | STYRENIC-BASED ELASTOMERS | STOPPER, GREEN                  |
| 1              | POLYAMIDE | BEIGE(NATURAL), UL94V-0      | 3              | PS                        | ELECTROSTATIC PROTECTION, CLEAR |
| NO.            | MATERIAL  | FINISH, REMARKS              | NO.            | MATERIAL                  | FINISH, REMARKS                 |
| CODE NO. (OLD) |           |                              | CODE NO. (NEW) |                           |                                 |
| DRAWN          |           | DESIGNED                     | CHECKED        | APPROVED                  | RELEASED                        |
| T. Kumogawa    |           | T. Kumogawa                  | H. Tanaka      | J. Ono                    |                                 |
| 05.11.16       |           | 05.11.16                     | 05.11.16       | 05.11.16                  |                                 |
| DRAWING NO.    |           | PART NO.                     |                |                           |                                 |
| EDC3-083673-05 |           | DF13-*P-1.25DSA(20)          |                |                           |                                 |
| SCALE          |           | CODE NO.                     |                |                           |                                 |
| 5 : 1          |           | CL536-                       |                |                           |                                 |
| UNITS          |           |                              |                |                           |                                 |
| mm             |           |                              |                |                           |                                 |

TO

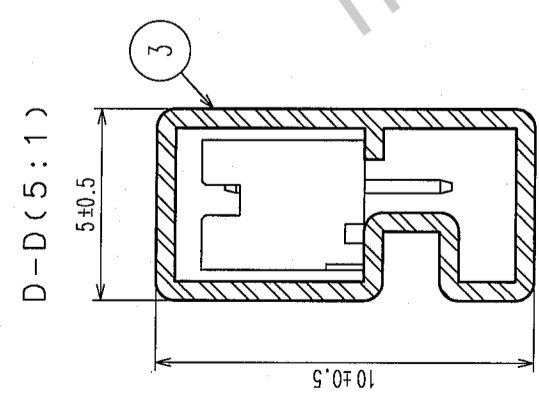
| COUNT | DESCRIPTION OF REVISIONS | BY | CHKD | DATE | COUNT | DESCRIPTION OF REVISIONS | BY | CHKD | DATE |
|-------|--------------------------|----|------|------|-------|--------------------------|----|------|------|
| △     |                          |    |      |      | △     |                          |    |      |      |
| △     |                          |    |      |      | △     |                          |    |      |      |
| △     |                          |    |      |      | △     |                          |    |      |      |

510-3



DF13シリーズ(DSA) MADE IN JAPAN HRS ヒロセ電機 空チューブ回収に御協力下さい 1 2 3 4 5 6 7 8

| PART No.             | CODE No.        | NUMBER OF CONTACTS | QUANTITY OF CONNECTORS |
|----------------------|-----------------|--------------------|------------------------|
| DF13-2P-1.25DSA(20)  | CL536-0101-9-20 | 2                  | 115                    |
| DF13-3P-1.25DSA(20)  | CL536-0102-1-20 | 3                  | 89                     |
| DF13-4P-1.25DSA(20)  | CL536-0103-4-20 | 4                  | 72                     |
| DF13-5P-1.25DSA(20)  | CL536-0104-7-20 | 5                  | 61                     |
| DF13-6P-1.25DSA(20)  | CL536-0105-0-20 | 6                  | 52                     |
| DF13-7P-1.25DSA(20)  | CL536-0106-2-20 | 7                  | 46                     |
| DF13-8P-1.25DSA(20)  | CL536-0107-5-20 | 8                  | 41                     |
| DF13-9P-1.25DSA(20)  | CL536-0108-8-20 | 9                  | 37                     |
| DF13-10P-1.25DSA(20) | CL536-0109-0-20 | 10                 | 34                     |
| DF13-11P-1.25DSA(20) | CL536-0110-0-20 | 11                 | 31                     |
| DF13-12P-1.25DSA(20) | CL536-0111-2-20 | 12                 | 29                     |
| DF13-13P-1.25DSA(20) | CL536-0112-5-20 | 13                 | 27                     |
| DF13-14P-1.25DSA(20) | CL536-0113-8-20 | 14                 | 25                     |
| DF13-15P-1.25DSA(20) | CL536-0114-0-20 | 15                 | 23                     |



NOTE4. MINIMUM UNIT OF PURCHASE SHALL BE THE QUANTITY OF CONNECTORS IN TUBE.

TO

| NO.            | MATERIAL | FINISH, REMARKS | NO.                                | MATERIAL                 | FINISH, REMARKS |
|----------------|----------|-----------------|------------------------------------|--------------------------|-----------------|
| CODE NO. (OLD) |          |                 | DRAWN                              | DESIGNED                 | CHECKED         |
|                |          |                 | 7. Kumagawa T. Kumagawa H. Umehara |                          | J. Ota          |
|                |          |                 | '05.11.16                          | '05.11.16                | '05.11.16       |
| DRAWING NO.    |          | PART NO.        |                                    | FINISH, REMARKS          |                 |
| SCALE          |          | EDC3-083673-05  |                                    | DF13-*P-1.25DSA(20)      |                 |
| FREE           |          | HRS             |                                    | HIROSE ELECTRIC CO., LTD |                 |
| UNITS          |          | CL536-          |                                    | 2                        |                 |