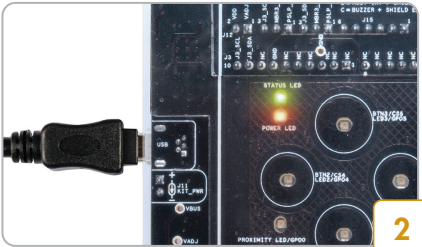


CAPSENSE® MECHANICAL BUTTON REPLACEMENT KIT



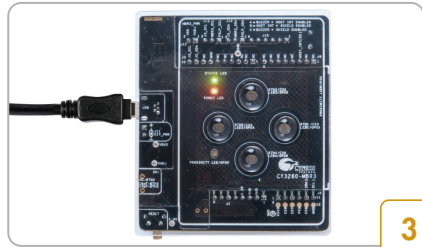
1

- Download and install the latest kit software and examples from www.cypress.com/go/CY3280-MBR3



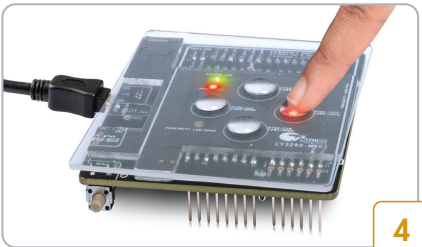
2

- Place the provided 1mm overlay on top of the kit. Connect the kit to your computer using the provided USB cable



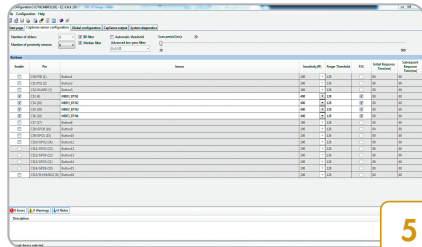
3

- Place water droplets onto CapSense® buttons using the dropper provided



4

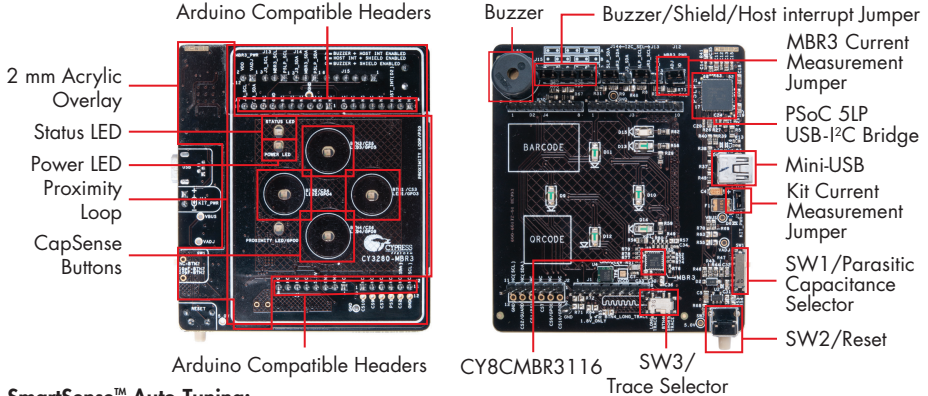
- Press BTN1 with the water on the overlay to evaluate CapSense water tolerance



5

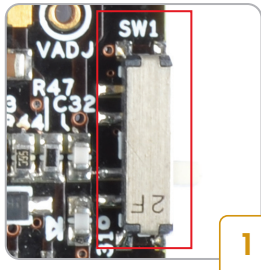
- Configure different features with the EZ-Click™ Software Tool

CAPSENSE® MECHANICAL BUTTON REPLACEMENT KIT



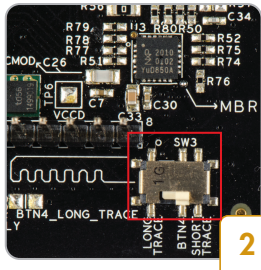
SmartSense™ Auto-Tuning:

Easily evaluate the SmartSense™ Auto-Tuning algorithm, which continuously compensates for system, manufacturing, and environmental changes. Easily evaluate the SmartSense algorithm by varying the parasitic capacitance in one of three ways:



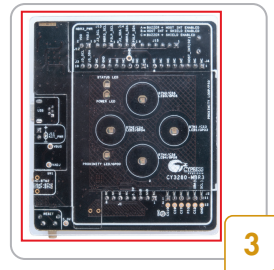
1

- Use SW1 to vary an external capacitor in parallel with the trace to BTN2



2

- Use SW3 to vary the trace length to BTN4



3

- Place the provided 1 mm overlay over the kit

Note: Reset the kit using SW2 switch after changing any parasitic capacitance values. The button performance remains the same due to SmartSense Auto-tuning

For the latest information about this kit and to download kit software and hardware files, visit <http://www.cypress.com/go/CY3280-MBR3>