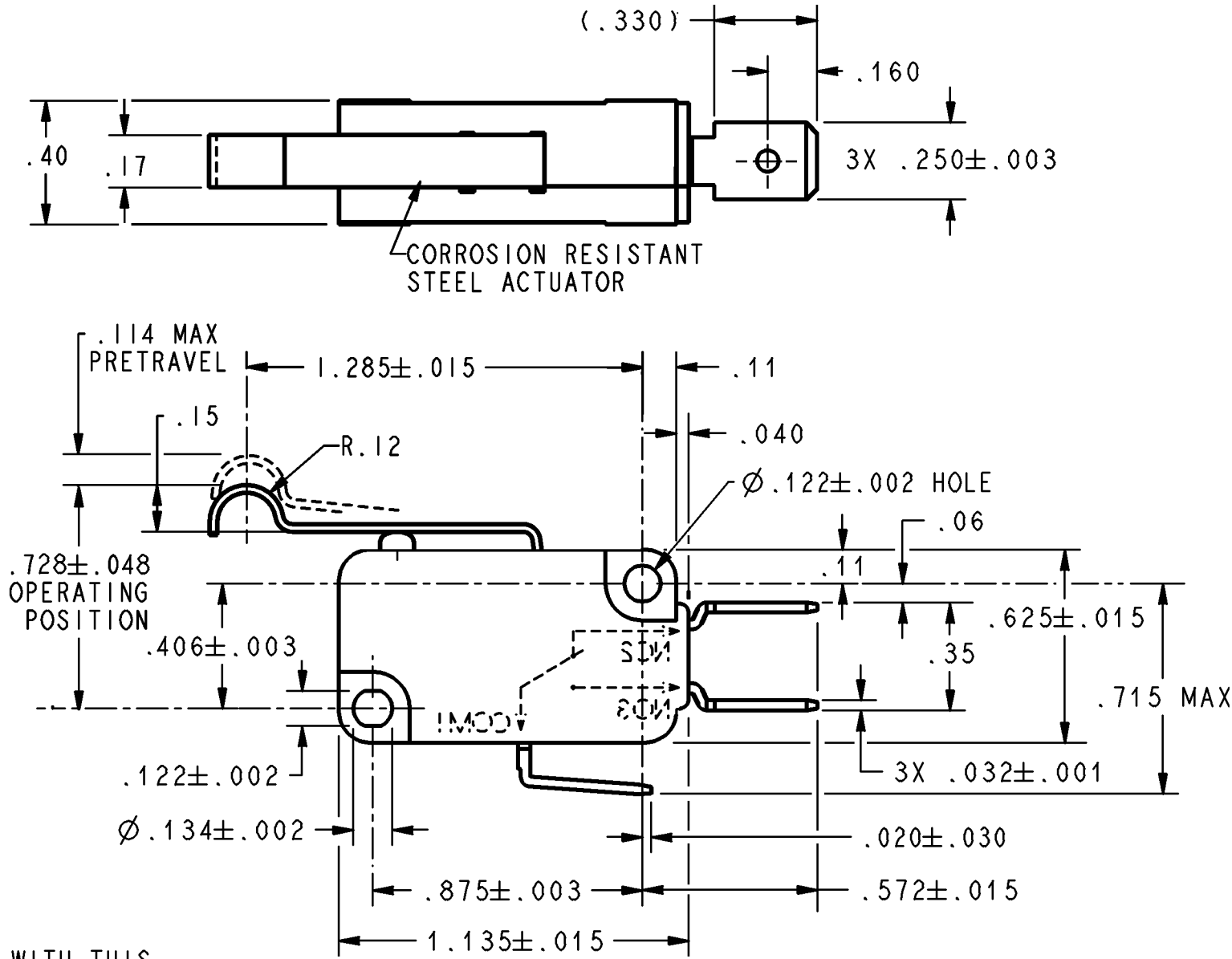


HONEYWELL  
PART NUMBER  
V7-1Z10E9-263  
PRODUCT CODE  
CW-B9707

REV	DOCUMENT	CHANGED BY	CHECK
A	0059780	SJK 22DEC09	CMH



NOTES:  
1 - MAXIMUM MECHANICAL DEAD BREAK OF .0063 MAY BE EXPECTED WITH THIS SWITCH CONSTRUCTION

CHARACTERISTICS
OPERATING FORCE ---- 136 GRAMS MAX
RELEASE FORCE ----- 7 GRAMS MIN
DIFFERENTIAL TRAVEL ---- .025 MAX
OVERTRAVEL ----- .064 MIN
FREE POSITION -----
RELEASE TRAVEL ----- .015 MIN

ELECTRICAL DATA
CONTACT ARRANGEMENT S P D T
25A, 277 VAC
1HP, 125 VAC
2HP, 250 VAC

DESIGN UNITS: INCH
TOLERANCES UNLESS NOTED:
NO PLACES    x    ±    .040
ONE PLACE    .x    ±    .030
TWO PLACE    .xx    ±    .015
THREE PLACE .xxx    ±    .005
ANGLES        x    ±    -
THIRD ANGLE PROJECTION

DRAWN	SJK	22DEC09
CHECK	TGP	22DEC09
THIS DRAWING COVERS A PROPRIETARY ITEM AND IS THE PROPERTY OF HONEYWELL. THIS DRAWING IS NOT TO BE COPIED OR USED WITHOUT THE PERMISSION OF HONEYWELL.		
INTERPRET PER ASME Y14.5M-1994 OTHER HONEYWELL ENGINEERING STANDARDS MAY APPLY		
RASTER		

<b>Honeywell</b>				
TITLE <b>SWITCH, BASIC</b>				
SIZE	TYPE	CAGE CODE	DRAWING NAME	REV
<b>B</b>	<b>I</b>	-	<b>V7-1Z10E9-263</b>	<b>A</b>
SCALE	NONE	SHEET		1 OF 1