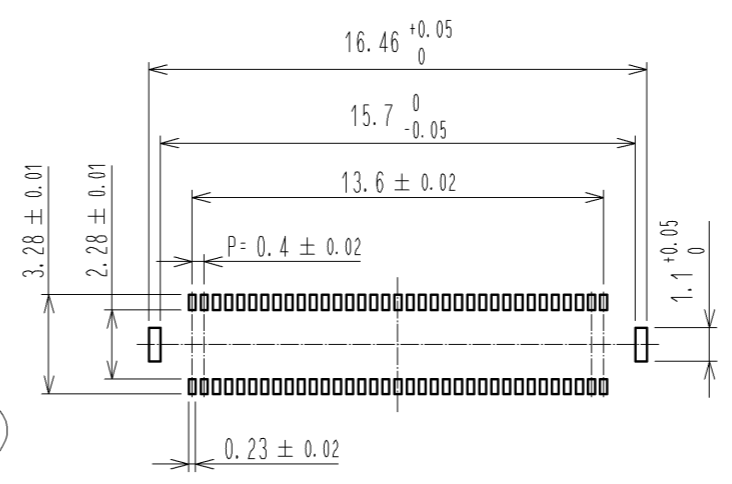
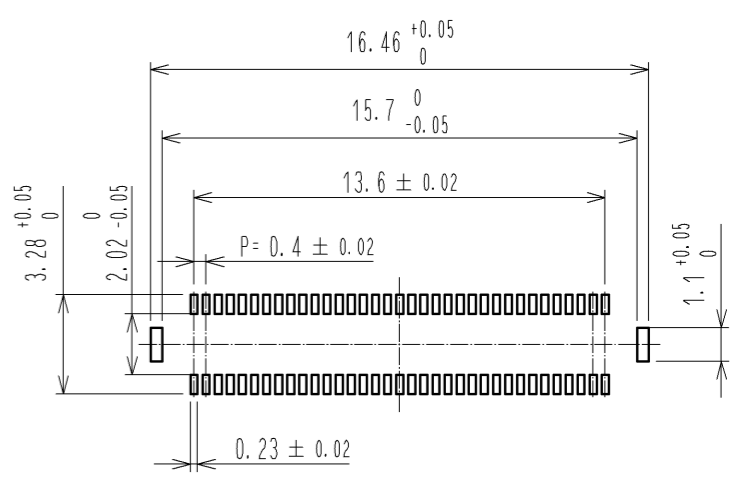


RECOMMENDED METAL MASK
OPENING PATTERN

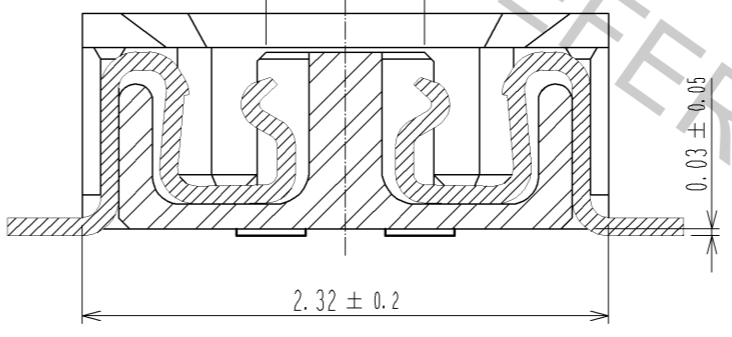


RECOMMENDED PATTERN

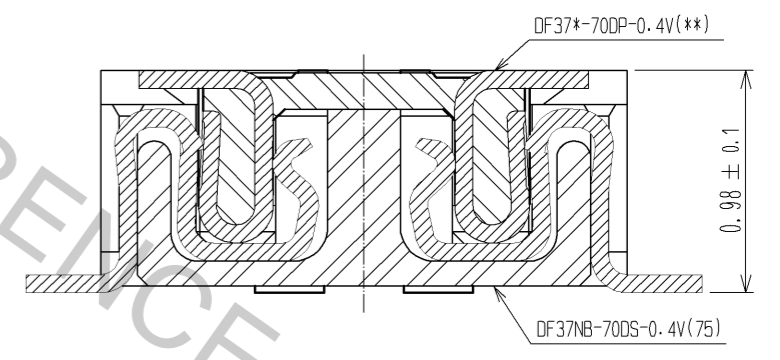


RECOMMENDED SOLDER PASTE THICKNESS : 120µm

A-A
PICK AND PLACE AREA : 0.7 ± 0.2

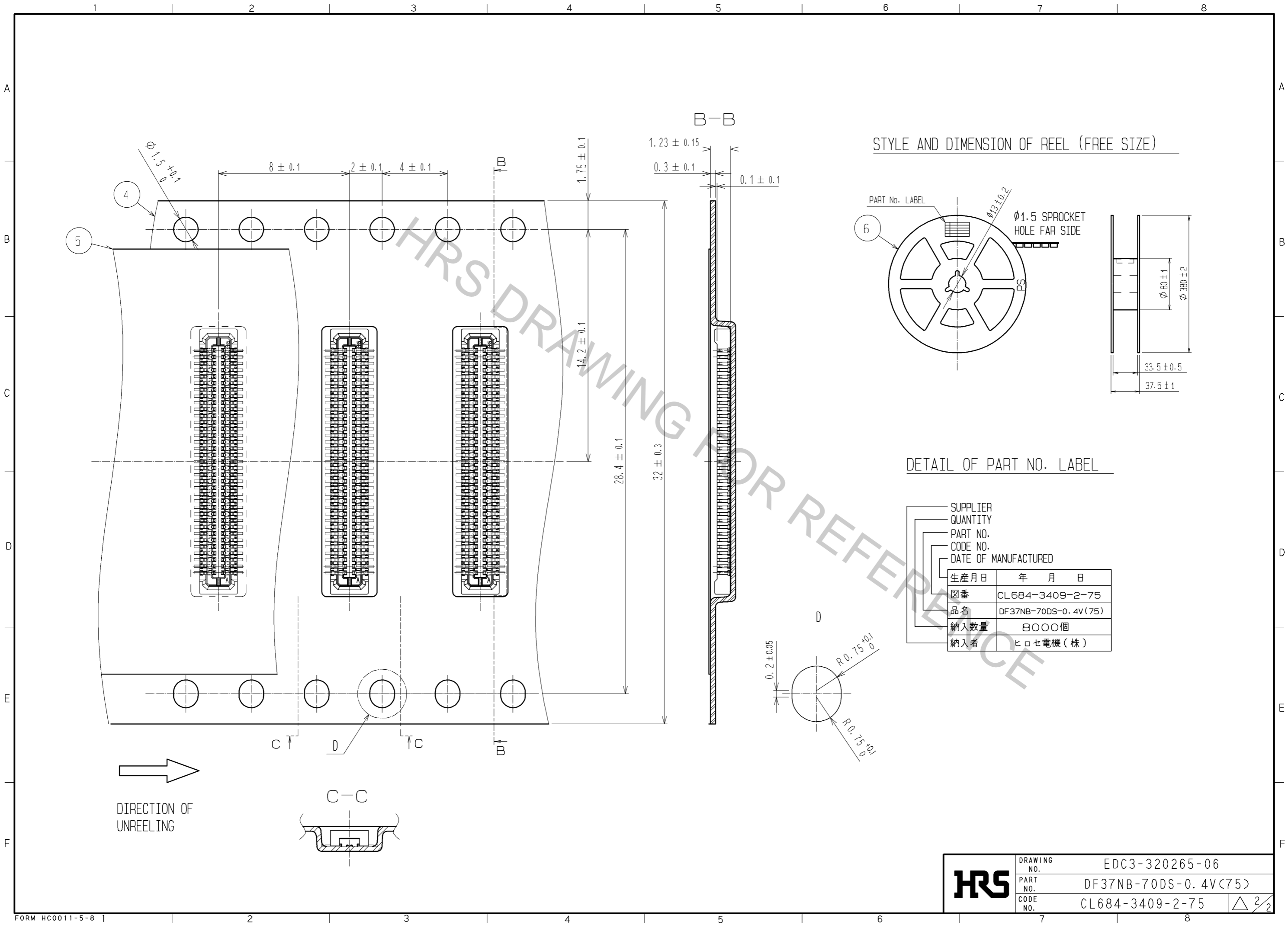


ENGAGEMENT FIGURE



- NOTE 1. ALL LEADS CO-PLANARITY SHALL BE 0.1 MAX.
 2. PER REEL : 8000 CONNECTORS.
 3. AT THE BEGINNING OF THE REEL, 100 mm AT MIN SHALL BE EMPTY POCKETS.
 AT THE END OF THE REEL, 160 mm AT MIN SHALL BE EMPTY.
 4 CONTACT PLATING SPECIFICATIONS.
 CONTACT AREA : GOLD 0.1µm MIN.
 SMT LEAD : GOLD 0.05µm MIN.
 UNDERPLATING : NICKEL 1µm MIN.
 (SURFACE : SEALING)
 5 METAL HOLD DOWN PLATING SPECIFICATIONS.
 MOUNTING AREA: GOLD 0.05µm MIN.
 UNDERPLATING : NICKEL 1µm MIN.
 6. PEEL FORCE OF COVER TAPE REFERS TO JIS C 0806.

3	PHOSPHOR BRONZE	5	6	PS	PLASTIC REEL (BLACK)			
2	PHOSPHOR BRONZE	4	5	POLYESTER	CLEAR (COVER TAPE)			
1	LCP	UL94V-0, BLACK	4	PS	CLEAR (EMBOSSED CARRIER TAPE)			
NO.	MATERIAL	FINISH, REMARKS	NO.	MATERIAL	FINISH, REMARKS			
UNITS	mm	SCALE	FREE	COUNT	DESCRIPTION OF REVISIONS	DESIGNED	CHECKED	DATE
HRS HIROSE ELECTRIC CO., LTD.		APPROVED : KH. IKEDA	10.11.23	DRAWING NO. EDC3-320265-06				
		CHECKED : TS. MIYAZAKI	10.11.22	PART NO. DF37NB-70DS-0.4V(75)				
		DESIGNED : RT. SHIMIZU	10.11.22	CODE NO. CL684-3409-2-75				
		DRAWN : YN. SAKAMOTO	10.11.19					



HRS	DRAWING NO.	EDC3-320265-06
	PART NO.	DF37NB-70DS-0.4V(75)
	CODE NO.	CL684-3409-2-75
		△ 2/2