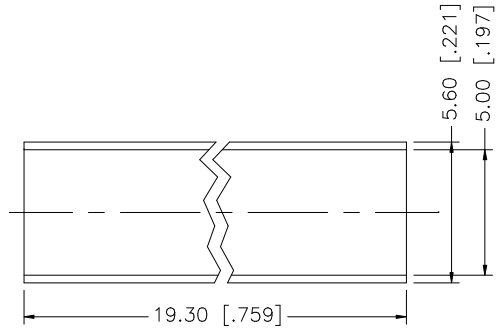
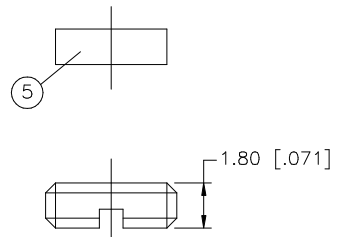
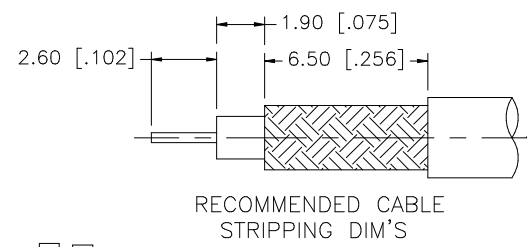
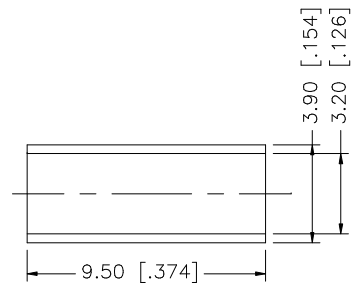
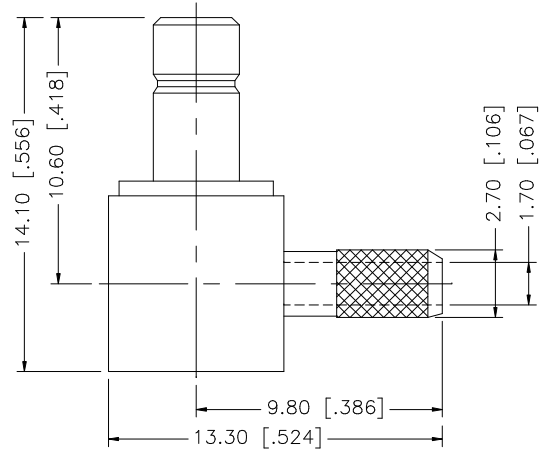


| REV. | DATE     | DESCRIPTION     |
|------|----------|-----------------|
| NC   | 02/24/03 | INITIAL RELEASE |



- NOTE:
1. CRIMPED FERRULE  
HEX CRIMP SIZE .128"
  2. CONTACT PIN TO SOLDER

| DESCRIPTION        | MATERIAL | FINISH  | QTY |
|--------------------|----------|---------|-----|
| 8 HEAT SHRINK TUBE |          |         | 1   |
| 7 FERRULE          | COPPER   | GOLD    | 1   |
| 6 COVER            | BRASS    | GOLD    | 1   |
| 5 INSULATOR        | P.E.     | NATURAL | 1   |
| 4 INSULATOR        | TEFLON   | NATURAL | 1   |
| 3 CONTACT PIN      | BRASS    | GOLD    | 1   |
| 2 BARREL           | BRASS    | GOLD    | 1   |
| 1 BODY             | BRASS    | GOLD    | 1   |

UNLESS OTHERWISE SPECIFIED DIMENSIONS ARE IN MILLIMETERS. DIMENSIONS IN [ ] ARE IN INCHES AND FOR CUSTOMER REFERENCE ONLY.

UNLESS OTHERWISE SPECIFIED TOLERANCES FOR MILLIMETERS ARE:  
0.5 - 8mm ± 0.20mm  
8 - 30mm ± 0.40mm  
30 - 120mm ± 0.50mm

UNLESS OTHERWISE SPECIFIED TOLERANCES FOR INCHES ARE:  
.020 - .315 = ± 0.007"  
.315 - 1.180 = ± 0.015"  
1.180 - 4.724 = ± 0.020"

DO NOT SCALE DRAWING

| APPROVALS                  | DATE     |
|----------------------------|----------|
| DRAWN G.R.S.               | 02/24/03 |
| CHECKED                    |          |
| ISSUED                     |          |
| SHEET 1 OF 1               |          |
| CAD FILE C:/142/142252.DWG |          |

**Amphenol Connex**

PART DESCRIPTION  
**SMB R/A CRIMP JACK  
(FOR RG-174/U, 188A/U, 316/U CABLE)**

PART NO.  
**142252**

DWG. NO. 142252.DWG    REV. NC    SIZE A    SCALE NA