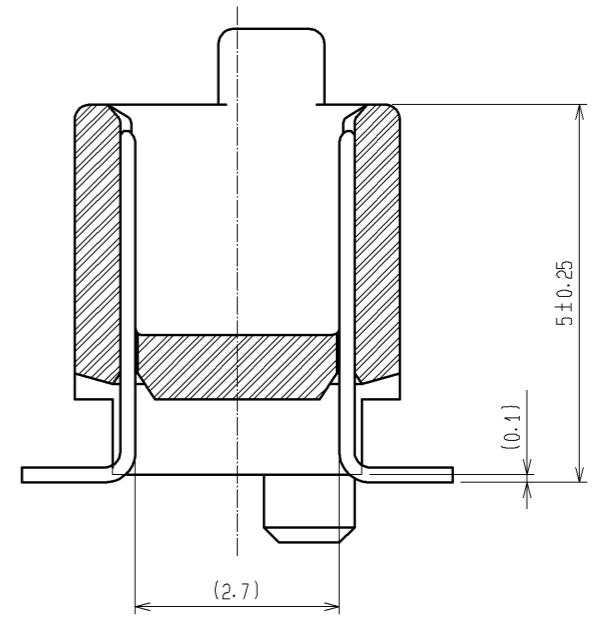
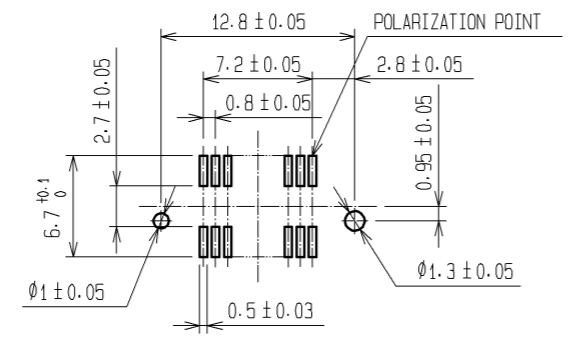


A-A (10:1)

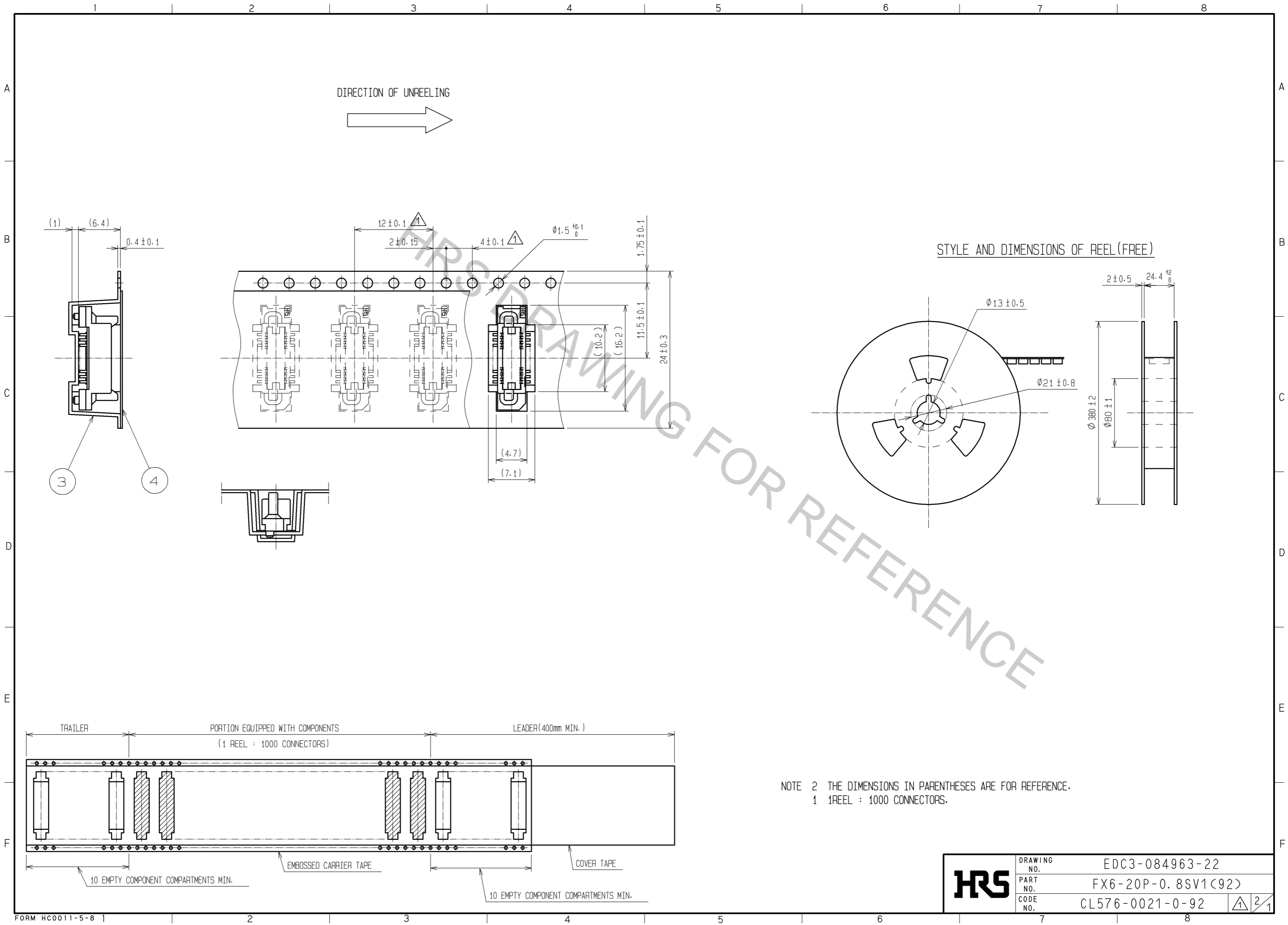


- NOTE
- 1 HRS MARK SHALL BE OPTIONAL.
  - 2 LEAD CO-PLANARITY SHALL BE 0.1mm MAX.
  - 3 THE DIMENSIONS IN PARENTHESES ARE FOR REFERENCE.
  - 4 PACKING SHALL BE EMBOSSED CARRIER TAPE. SEE NEXT PAGE FOR DETAILS.
  - 5 FOR MODIFICATION, ETC., PREVENTIVE HOLE FOR SINK MARK MAY BE ADDED ACCORDING TO CIRCUMSTANCES.

RECOMMENDED LAND PATTERN DIMENSION OF PCB (MOUNT SIDE)  
(RECOMMENDED METAL MASK THICKNESS: 0.15mm)  $\Delta$



1	POLYPHENYLENE SULFIDE	LIGHT BROWN UL94V-0	4	POLYESTER	COVER TAPE		
			3	POLYSTYRENE	EMBOSSED CARRIER TAPE		
			2	PHOSPHOR BRONZE	CONTACT AREA: GOLD 0.1μm min. LEAD AREA: TIN-PLATING 1μm min. UNDER PLATING: NICKEL 1μm min.		
NO.	MATERIAL	FINISH, REMARKS	NO.	MATERIAL	FINISH, REMARKS		
UNITS mm	$\oplus$ $\triangle$	SCALE 2:1	COUNT $\triangle$ 3	DESCRIPTION OF REVISIONS DIS-F-006187	DESIGNED Y.J. ASAO	CHECKED HT. YAMAGUCHI	DATE 12.05.11
<b>HRS</b> HIROSE ELECTRIC CO., LTD.		APPROVED : HS. OKAWA 05.08.03	DRAWING NO. EDC3-084963-22				
		CHECKED : HS. OZAWA 05.08.02	PART NO. FX6-20P-0.8SV1(92)				
		DESIGNED : TK. YANAGISAWA 05.08.02	CODE NO. CL576-0021-0-92				
		DRAWN : TK. YANAGISAWA 05.08.02					



<b>HRS</b>	DRAWING NO.	EDC3-084963-22
	PART NO.	FX6-20P-0.8SV1(92)
	CODE NO.	CL576-0021-0-92
		2/1