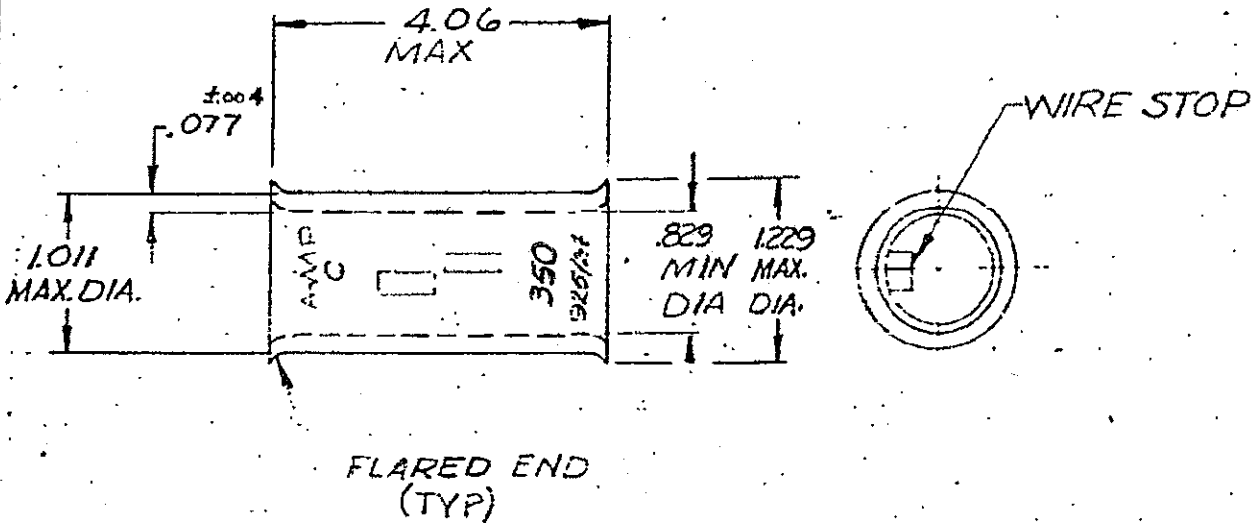


DRAWING MADE IN AMERICAN PROJECTION

LOC 6 PRINT DIR 3613

© 1972 BY AMP INCORPORATED. ALL RIGHTS RESERVED. AMP PATENTS COVERED BY PATENTS ARE NOT TO BE REPRODUCED OR PUBLISHED WITHOUT WRITTEN PERMISSION OF AMP INCORPORATED.

REVISIONS			
LTH	DESCRIPTION	DATE	APPROVED
0	NFS 71-0919	2-14-72	Jme
A	ADDED RP STAMPING ECN P-7365	12-30-74	W2M
B	OBSOLETE PER. G-3121	8/17/88	PMF
C	REV PER G-5815	1/27/92	DKS ATK
D	REV / DG 10-0030-99	3-10-99	ME/SU
E	REVISED PER CG3A-0637-02	01/10/02	JAL



UNLESS OTHERWISE SPECIFIED DIMENSIONS ARE IN INCHES FRACTIONS: 16 DECIMALS: .008 ANGLES: °	CONTRACT NO. <u> </u>		AMP INCORPORATED HARRISBURG, PENNSYLVANIA		
	DR. <u>Harry Bab 2-14-72</u>		NAME <u>WIRE SPLICE</u>		
MATERIAL: <u>ANNIELED COPPER (ASTM-B-75)</u> FINISH: <u>TIN PLATE (ASTM B 545)</u>	CR. <u>Am. Engrs 2-18-72</u> APPD. <u>Abel 2-16-72</u> DESG APPD. <u>Engrs 2-16-72</u> OTHER APPD.	WIRE SPLICE AMP POWER-BUTT WIRE SIZE: 350 MCM	SIZE <u>A</u>	CODE IDENT NO. <u>00779</u>	NUMBER <u>53087</u>
			SCALE <u>NTS</u>	SHEET <u>1 OF 1</u>	