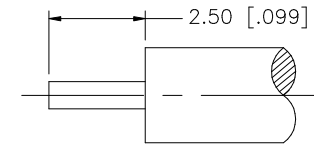
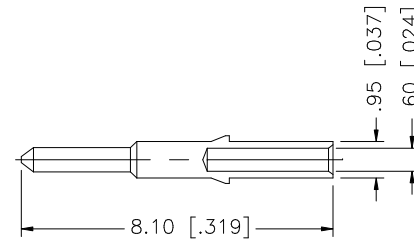
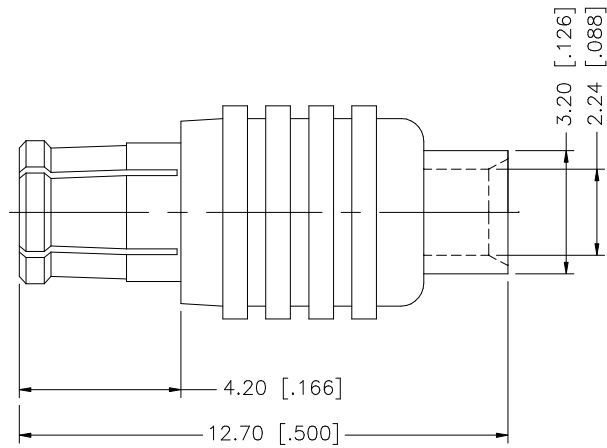


REV.	DATE	DESCRIPTION
A	04/31/03	UPDATE DRAWING FORMAT



RECOMMENDED CABLE STRIPPING DIMENSIONS

8				<p>UNLESS OTHERWISE SPECIFIED DIMENSIONS ARE IN MILLIMETERS. DIMENSIONS IN [] ARE IN INCHES AND FOR CUSTOMER REFERENCE ONLY.</p> <p>UNLESS OTHERWISE SPECIFIED TOLERANCES FOR MILLIMETERS ARE: 0.5 - 8mm ± 0.20mm 8 - 30mm ± 0.40mm 30 - 120mm ± 0.50mm</p> <p>UNLESS OTHERWISE SPECIFIED TOLERANCES FOR INCHES ARE: .020 - .315 = ± 0.007" .315 - 1.180 = ± 0.015" 1.180 - 4.724 = ± 0.020"</p>	APPROVALS	DATE	<h1 style="color: blue;">Amphenol Connex</h1>				
7					DRAWN	G.R.S.		04/31/03	PART DESCRIPTION		
6					CHECKED					<p>MCX DIRECT SOLDER PLUG (FOR .085", .086")</p>	
5								PART NO.			
4					ISSUED				252107		
3	CONTACT PIN	BRASS	GOLD		1	SHEET	1 OF 1				
2	INSULATOR	TEFLON	NATURAL		1						
1	BODY	BER. COPPER	GOLD		1						
	DESCRIPTION	MATERIAL	FINISH	QTY	DO NOT SCALE DRAWING		CAD FILE	DWG. NO.	REV.	SIZE	SCALE
							C:/252/252107.DWG	252107.DWG	A	A	NA