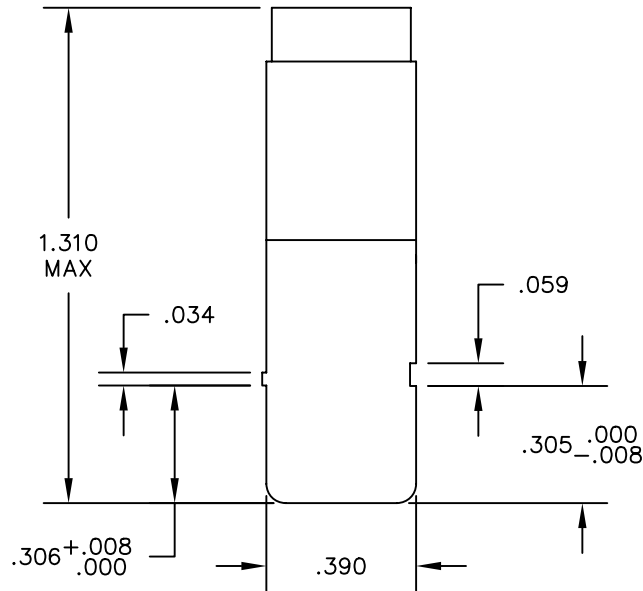
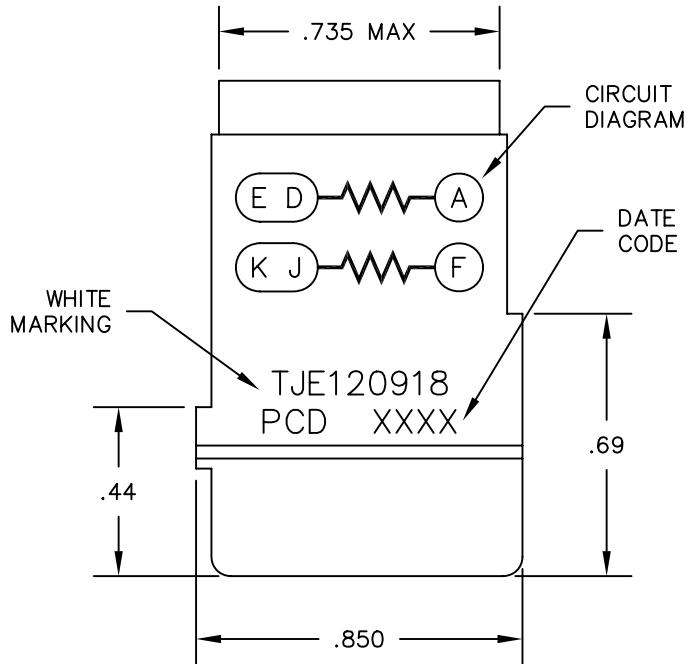
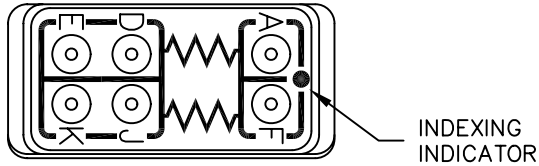


REV	ECN	APP'D
A	5790	JT 1/27/06



NOTES:

- MATERIALS:
HOUSING - POLYETHERIMIDE, COLOR: BLACK.
GROMMET - SILICONE ELASTOMER, COLOR: BLUE
RESISTOR A - $10K\Omega \pm 1\%$, 1/2 W, RLR20C1002FS
RESISTOR F - $300K\Omega \pm 2\%$, 1/2 W, RLR20C3003GS
- MODULE SUPPLIED WITH 7 PIN CONTACTS, M39029/1-101 AND 2 SEALING PLUGS, MS24788-20.

DIMENSIONS ANSI Y14.5M UNITS: INCHES ACAD FILE	TOLERANCES .XX $\pm .01$.XXX $\pm .005$ ANGLES $\pm 2^\circ$	PROJECTION 	<i>SPECIFICATION DRAWING</i>			<i>TITLE</i> ELECTRONIC MODULE RESISTOR, $10K\Omega + 300K\Omega$ 1/2W	
			ENGR D. LANG 03/29/05				
ORIGINAL	<i>THIS DOCUMENT CONTAINS PROPRIETARY INFORMATION WHICH IS THE CONFIDENTIAL PROPERTY OF PCD, INC. PEABODY, MA, USA</i>		CHKD	SIZE A	DWG NO. TJE120918		REV A
			APPD	CODE: 58982			SCALE: 2X