

Panduct[®] Duct Corner Strip with 1" Bend Radius Control

- Create a strong rigid corner at wiring duct junctions
- Provide bend radius protection for cabling as required in NFPA 79-2007 section 13.1.5.9 and TIA/EIA-568-B and 569-A
- Available in 6 foot lengths that can be cut to size to meet any size requirement
- Easy to install two-piece design
- Compatible with all styles of Panduit wiring duct
- UL 94 flammability rating of V-0
- Material: Lead-free PVC



Cutting Guide for Duct Corner Strips

Part Number	Part Description	For Duct Height		Color	Std. Pkg. Qty. (Pcs.)	Std. Ctn. Qty. (Pcs.)
		In.	mm			
6' Lengths for use with all Types of PVC Wiring Duct						
CSC1LG6	Cut-to-size 6 foot corner strip with a 1" bend radius.	All sizes (Cut to height)*	All sizes (Cut to height)*	Light Gray	6	120

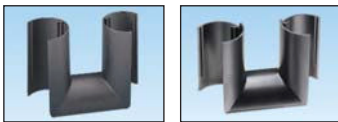
Order number of feet required, in multiples of 6' or Standard Package Quantity.
*Refer to Cutting Guide below.

Used with Duct Height	Cut-to-Size*	Used with Metric Duct Height	Cut-to-Size*
1 inch	0.47" (11.9)	25mm	0.43" (10.9)
1.5 inch	1.04" (26.4)	37mm	0.91" (23.1)
2 inch	1.23" (31.2)	50mm	1.39" (35.3)
2.5 inch	1.97" (50.0)	62mm	1.85" (47.0)
3 inch	2.27" (57.7)	75mm	2.38" (60.5)
4 inch	3.25" (82.5)	100mm	3.35" (85.1)
5 inch	4.47" (113.5)		

*Cut-to-size measure fits into the flat area of the duct sidewall.

Fiber-Duct[™] Bend Radius Control Trumpets

- Available for 2" and 4" wall height type G slotted wall wiring duct and type FS solid wall raceway
- TRC2HDBL is available for 2" wall height type H hinged cover wiring duct
- Provide method to transition cabling from wall mounted hardware to wiring duct channel
- Maintain complete 1" bend radius control



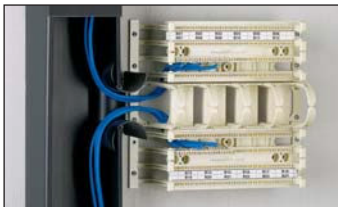
TRC2BL

TRC4BL



TRC2HDBL

TRC4HDBL



Part Number	Part Description	For Duct Height		Std. Pkg. Qty. (Pcs.)	Std. Ctn. Qty. (Pcs.)
		In.	mm		
TRC2BL	Bend radius control trumpet for exiting at the sidewall of 2" wall heights of type G, FS, or E Fiber-Duct [™] Channels.	2.00	50.8	1	10
TRC4BL	Bend radius control trumpet for exiting at the sidewall of 4" wall heights of type G, FS, or E Fiber-Duct [™] Channels.	4.00	101.6	1	10
TRC2HDBL	Bend radius control trumpet for exiting at the sidewall of 2" wall heights of type H hinged cover wiring duct channels.	2.00	50.8	1	10
TRC4HDBL	Bend radius control trumpet for exiting at the sidewall of 4" wall heights of type H hinged cover wiring duct channels.	4.00	101.6	1	10

All product color is black.