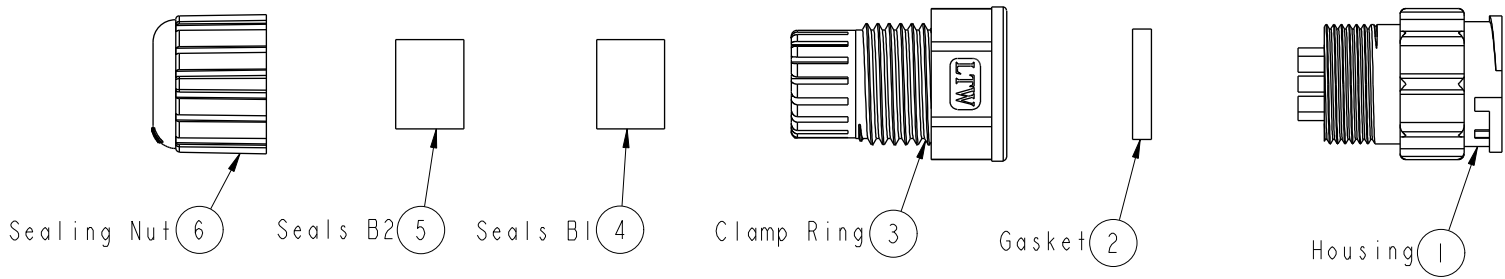


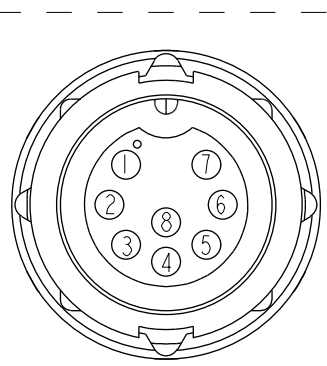
REV.	ECN NO.	DATE	SIGN	DESCRIPTION
B	LEN-0C0102	2009/11/23	Ivan	Change 前導角 View

△B

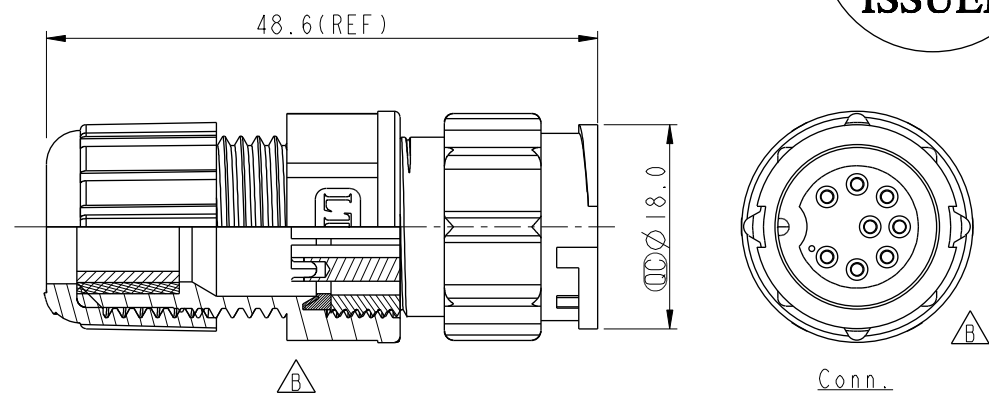


ALTW
CONFIDENTIAL
 2012-04-11
R&D DEPT.

ALTW
 DCC. DEPT.
 CONFIDENTIAL
 2012-05-21
ISSUED



Pin Assignments
Front View



Conn.

- Note:
- * ⌀ Important Dimension To Check.
 - * Waterproof Rate: IP67
 - * Housing: Nylon+GF, Black
 - * Female Pin: Copper Alloy, Gold Plated
 - * Gasket: Silicon, Black
 - * Clamp Ring: Nylon, Black
 - * Sealing Nut: Nylon, Black
 - * Seal B1 for Cable OD: $\text{⌀}7.6\text{mm} \sim \text{⌀}9.6\text{mm}$
 - * Seal B2 for Cable OD: $\text{⌀}4.0\text{mm} \sim \text{⌀}7.6\text{mm}$
 - * One Set Unassembled in One PE Bag

UNIT:mm		
TOLERANCE	.X	± 0.25
	.XX	± 0.1
	.XXX	± 0.05
ANGLES		$\pm 1^\circ$

TITLE Middle, Assy Lock 8Pin M Conn F Pin			
SCALE	SIZE	SHEET	OF
1:1	A4	1	1
REV.	WC-REV.	⌀ : Inspection item	
B	A.2		

Amphenol LTW
 安費諾亮泰企業股份有限公司

ITEM NO.	CD-08BMFA-LL7001	DRAWN BY	SamChang	DATE	2012-04-11
DWG NO.	CD-08BMFA-LL7001	CHECKED BY	Jeffrey	DATE	2012-05-21
CUSTOMER	ALTW	APPROVED BY	Lion	DATE	2012-05-21

THIS DOCUMENT IS SUBJECT TO CHANGE WITHOUT NOTICE. IT IS CONFIDENTIAL AND A PROPERTY OF AMPHENOL LTW. DISCLOSURE TO THIRD PARTY HAS TO BE AUTHORIZED BY AMPHENOL LTW.