

NOTES:

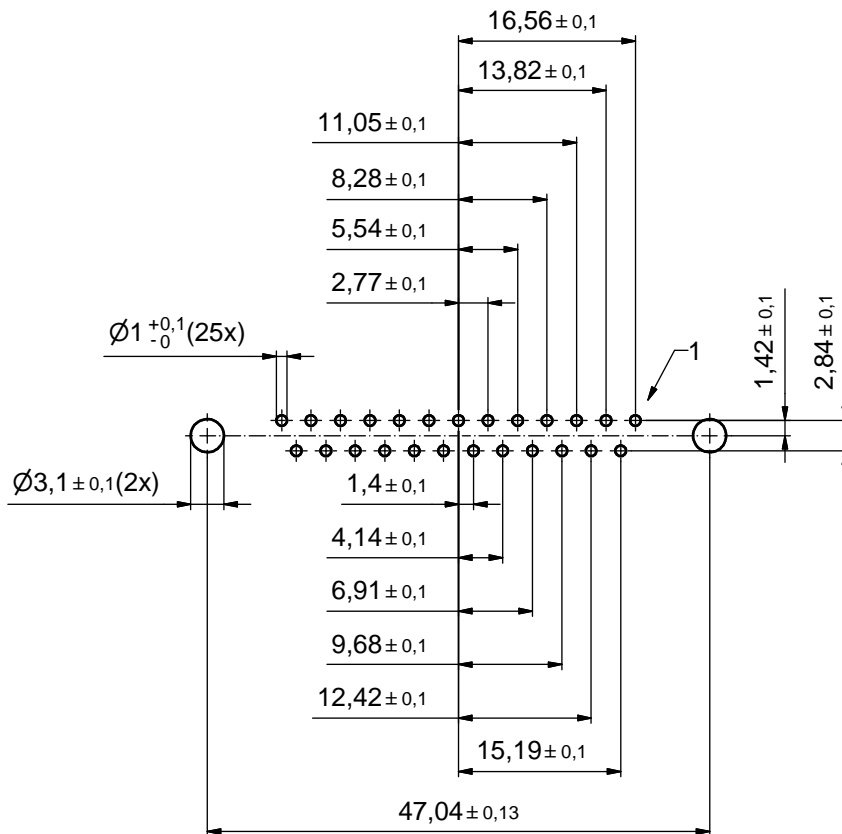
1. METALSHELLS: STEEL; min. 315µin TIN over 40-80µin NICKEL
2. INSULATORS: PBT GF UL 94 V-0; BLACK
3. CONTACTS: COPPER ALLOY
PLATING: GOLD FLASH over NICKEL
4. THREADED REAR SPACERS / FRONT THREADED LOCKS:
COPPER ALLOY; min. 200µin TIN over 80µin NICKEL
5. SLEEVES: COPPER ALLOY; min. 200µin TIN over 80µin NICKEL
6. MAXIMUM TORQUE VALUE FOR THREAD: 6 in.LB
7. P.C.B. HOLE DRILLINGS ON SHEET 2
8. CONNECTOR IS PART MARKED: 164A12199X CONEC ABC

Directive 2002/95/EC RoHS compliant

THIS DRAWING MAY NOT BE COPIED OR REPRODUCED IN ANY WAY, AND MAY NOT BE PASSED ON TO A THIRD PARTY WITHOUT WRITTEN PERMISSION. OWNERSHIP AND COPYRIGHT OF CONEC GmbH

DO NOT ALTER CAD DRAWING BY HAND

tolerance		dim. in mm	scale: 2:1 (5:1)		
			material: see notes		
drawn	16.03.11	Schmidt	title: D-SUB FEMALE 25pos. SOLDER PIN STRAIGHT with threaded rear spacer and front threaded lock		
appd.	16.03.11	Fischer			
norm					
d-old					
a	Origin	CONEC [®]		dwg no: Inventor 10	DIN-A3
rev.	description			date	name
				part no: 164A12199X	



P.C.B. HOLE DRILLINGS
(P.C.B. TOP SIDE)

THIS DRAWING MAY NOT BE COPIED OR REPRODUCED IN ANY WAY, AND MAY NOT BE PASSED ON TO A THIRD PARTY WITHOUT WRITTEN PERMISSION. OWNERSHIP AND COPYRIGHT OF CONEC GmbH DO NOT ALTER CAD DRAWING BY HAND				tolerance		scale: 2:1	
				date	name	material: see sheet 1	
				drawn	16.03.11	Schmidt	title: P.C.B. HOLE DRILLINGS D-SUB FEMALE 25pos. SOLDER PIN STRAIGHT with threaded rear spacer and front threaded lock
				appd.	16.03.11	Fischer	
				norm			
				d-old			dwg no: Inventor 10
	a	Origin		CONEC ®			DIN-A3
rev.	description	date	name				part no: see sheet 1