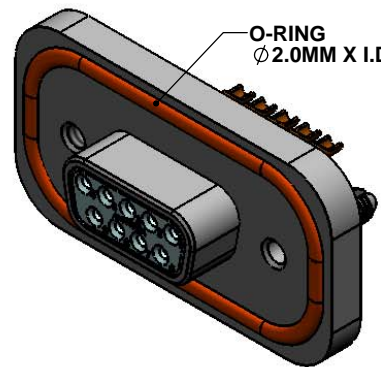
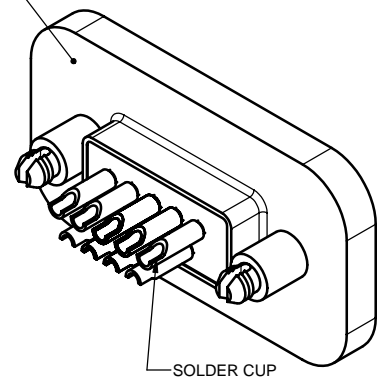


METAL DIE CAST OUTER SHELL

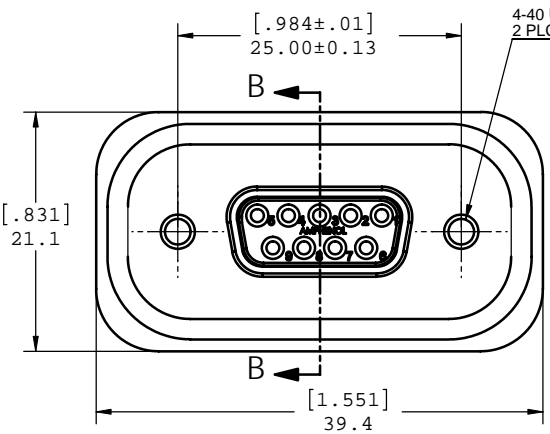


O-RING  
 Ø2.0MM X I.D. 27MM

[.435±.02]  
 11.05±0.50

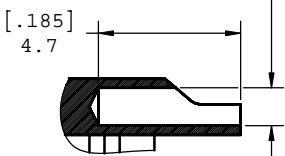
[.323]  
 8.2  
 [.197]  
 5.0

[.645]  
 16.38 MAX.



4-40 UNC  
 2 PLCS. DEPTH 5.0

[.049±.01]  
 Ø1.25±0.15



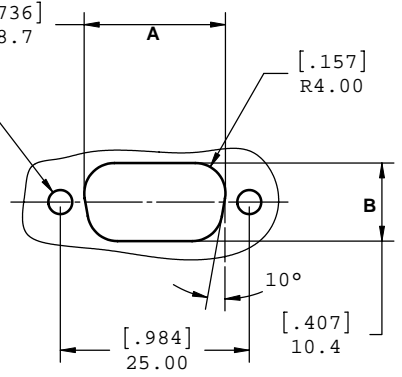
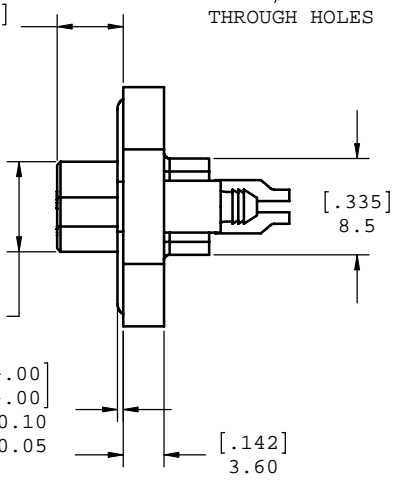
SECTION B-B  
 SCALE 8:1  
 (SOLDER CUP SHOWN)

[.229]  
 5.82

[.125]  
 2X Ø3.18  
 THROUGH HOLES

[.736]  
 18.7

[.157]  
 R4.00



**RECOMMENDED PANEL CUT-OUT**

\* DIMENSIONS SHOWN ON A,B ARE ENLARGED FOR CLEARANCE FOR MATING PIN CONNECTOR.

NOTES:

- MATERIAL:
  - SHELL: ZINC ALLOY 50 MICRO INCH MINIMUM NICKEL PLATING.
  - CONTACTS: COPPER ALLOY, 30 MICRO INCH GOLD OVER 50 MICRO INCH NICKEL PLATING.
  - INSULATOR: THERMOPLASTIC RESIN, UL94V-0 FLAMMABILITY RATING.
  - GASKETS: SILICONE RUBBER, 70 DUROMETER.
  - SEALING COMPOUND: POTTING EPOXY
- FEATURES: SEALED CONNECTOR IN THE MATED AND UNMATED CONDITIONS.
- OPERATING TEMPERATURE: -40°C TO +85°C.
- ENVIRONMENT PERFORMANCE: IP67.
- PART IS RoHS COMPLIANT.



UNLESS OTHERWISE SPECIFIED DIMENSIONS ARE IN MILLIMETER TOLERANCES ARE:		APPROVALS	DATE	<b>Amphenol Canada Corp.</b>	
DECIMALS	ANGLES	DRAWN Y.KUZYK	7/24/2006		
.XX ±.10	± 1°	DESIGNED S.SEMENOV	7/24/2006	TITLE RUGGED 9 SOCKET CONNECTOR D-SUB WITH SOLDER CUP	
.X ±.25		CHECKED		SIZE C	DWG. NO. P-MDBE-09SM-860
MATERIAL AND FINISH		QA APP'D		SCALE 3:1	PROJECT MDB
REF.		IE APP'D			REV. A
CODE IDENT. NO.		DWG APP'D	7/24/2006	SHEET 1 OF 1	