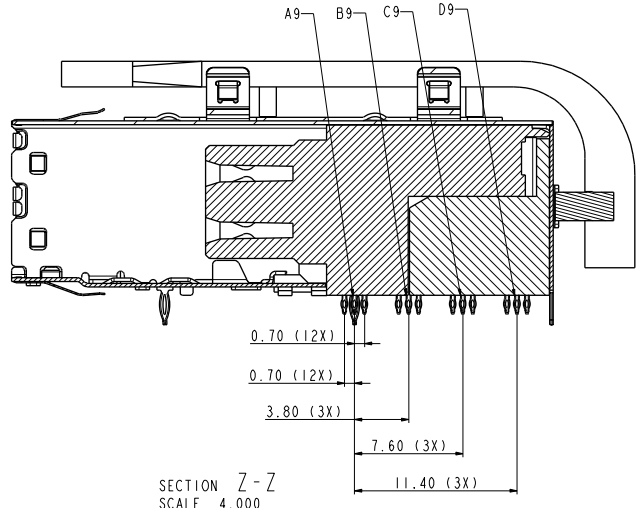
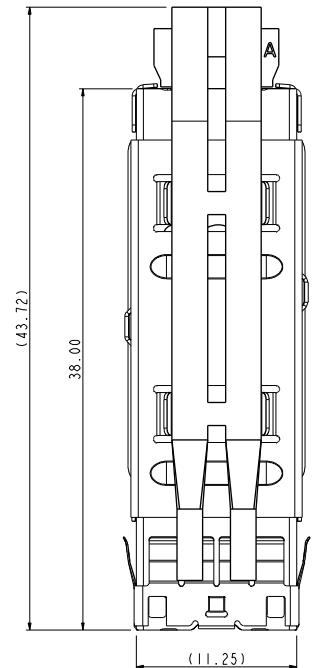
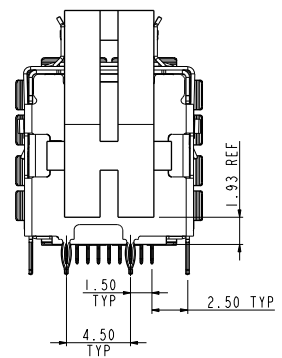
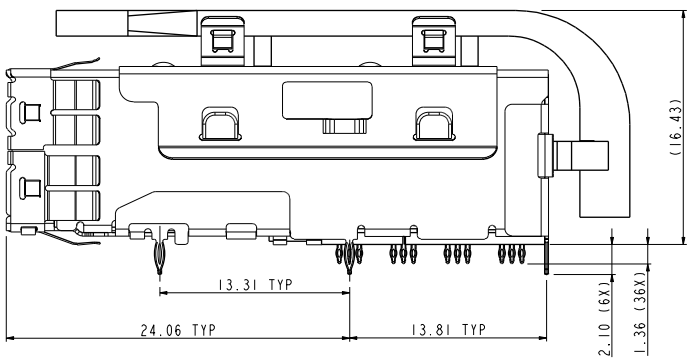
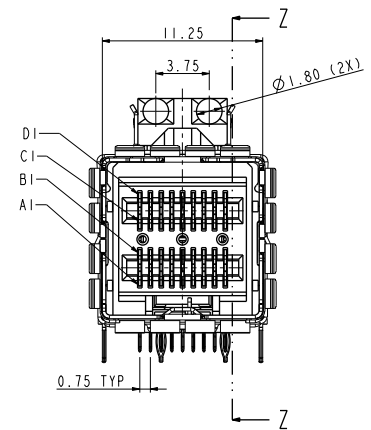


1	2	3	4	5	6	7	8
PRODUCT NUMBER	TAIL PLATING OPTION, SEE NOTE 2	IXI EXTERNAL ASSEMBLY	IXI LIGHT PIPE SUB-ASSEMBLY WITH MOUNTING CLIP				
10120960-101	OPTION 1	10112626-101					
10120960-101LF	OPTION 2	10112626-101LF	10121258-001LF				

- NOTES:
- MATERIALS:
CONNECTOR HOUSING: HIGH TEMPERATURE THERMOPLASTIC
GLASS FILLED, UL 94V-0
EMI CAGE: NICKEL SILVER ALLOY
EMI FINGERS: COPPER ALLOY
TERMINALS: COPPER ALLOY
LIGHT PIPE CLIP: STAINLESS STEEL
LIGHT PIPE: POLYCARBONATE
 - FINISHES:
EMI FINGERS: 0.50um MIN NICKEL
CONTACT AREA: 0.76um MIN GOLD OVER 2.54um MIN NICKEL
TAIL AREA:
OPTION 1: 0.76um - 1.52um TIN/LEAD (90/10) OVER 2.54um MIN NICKEL
OPTION 2: 0.76um - 1.52um TIN (LEAD FREE) OVER 2.54um MIN NICKEL
 - PRODUCT SPECIFICATION: GS-12-651
 - PRODUCT PACKING SPECIFICATION: GS-14-1490
EXTERNAL ASSEMBLY WILL BE IN ONE BOX.
LIGHT PIPE SUB-ASSEMBLY WITH MOUNTING CLIP WILL BE IN ONE BOX.
BOTH BOXES WILL BE IN A MASTER CARTON.
 - APPLICATION SPECIFICATION: GS-20-0327
 - MOUNTING HARDWARE: M2X0.4 BUTTON HEAD SCREW
MOUNTING SCREW LENGTH: BOARD THICKNESS + 1.4mm MAX (0.9mm MIN).
1 REQUIRED PER ASSEMBLY.
MOUNTING HARDWARE NOT SUPPLIED.
 - THIS CONNECTOR IS DESIGNED TO MEET THE REQUIREMENTS OF INDUSTRY SPECIFICATION SFF-8644.
 - LIGHT PIPE SUB-ASSEMBLY WITH MOUNTING CLIP FINAL ASSEMBLY AFTER EXTERNAL ASSEMBLY APPLIED TO PCB.

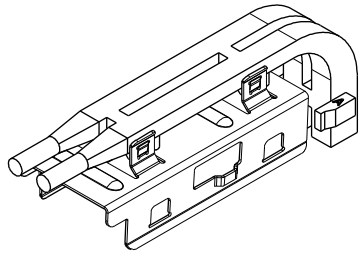


MATES WITH MINI-SAS HD ENDS IN:
10112041 SERIES (4X)
10117771 SERIES (4X)
10117946 SERIES (4X)
10117949 SERIES (4X)

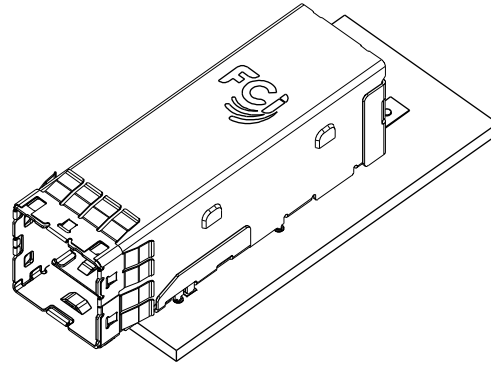


Copyright FCI

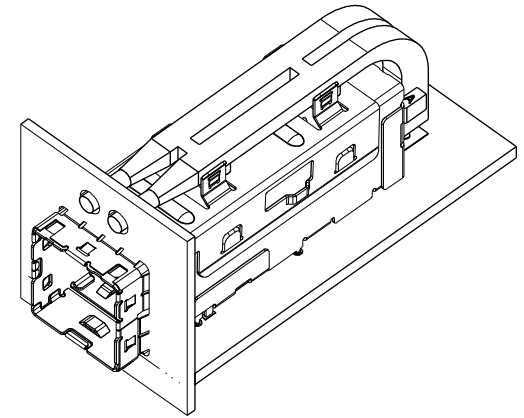
spec ref	-	dr	Benny Chen	2012-05-07	projection	MM	size	A2	scale	4.000
tolerance std	ISO 406 ISO 1101	eng	De-Feng Qin	2013-03-04			ecn no	-	rel level	-
TOLERANCES UNLESS OTHERWISE SPECIFIED		chr	Jon Qin	2013-03-04						
surface	linear	appr	Pei-Ming Zheng	2013-03-04	title	IXI EXTERNAL ASSEMBLY WITH LIGHT PIPE	eng no	10120960	rev	A
ISO 1302	angular	www.fcicom		cat. no.	-		Product - Customer Drw	sheet 1 of 6		



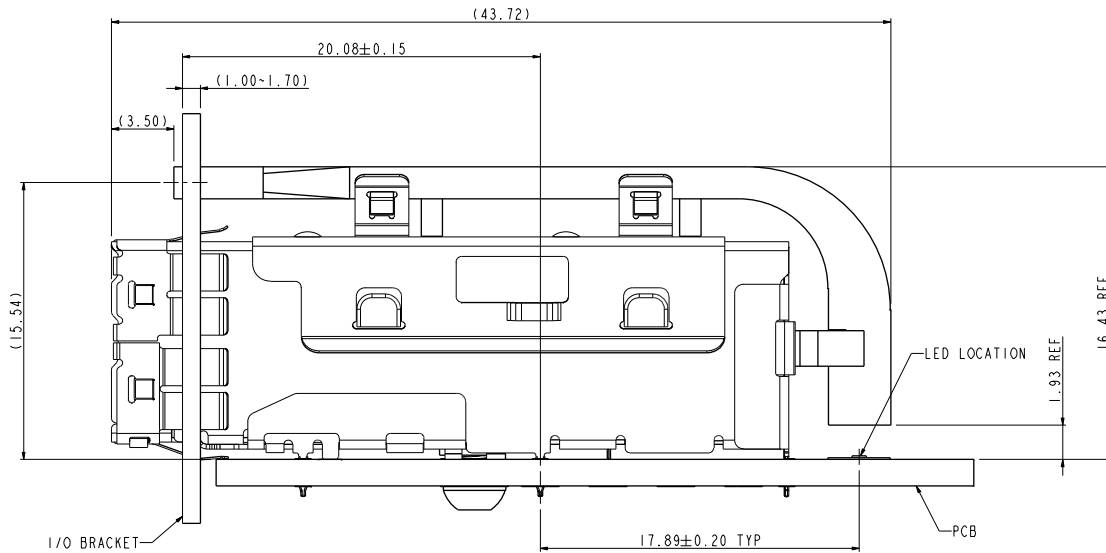
1X1 LIGHT PIPE SUB-ASSEMBLY
WITH MOUNTING CLIP
10121258-001LF



1X1 EXTERNAL ASSEMBLY
APPLIED TO PCB
10112626-101 & 101LF

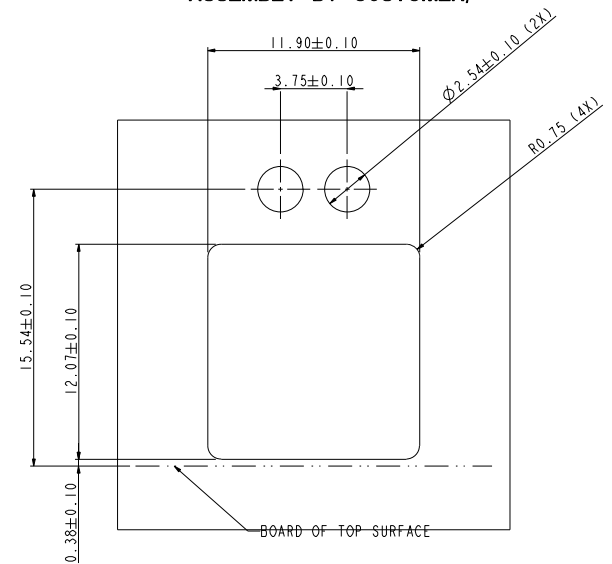


10120960-101 & 101LF
WITH LIGHT PIPE
(LIGHT PIPE SUB-ASSEMBLY
WITH MOUNTING CLIP FINAL
ASSEMBLY BY CUSTOMER)



SCALE 5.000

ASSEMBLED VIEW
WITH LIGHT PIPE

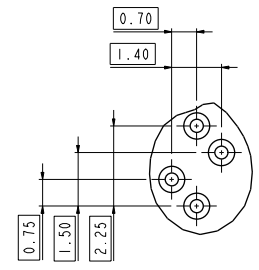
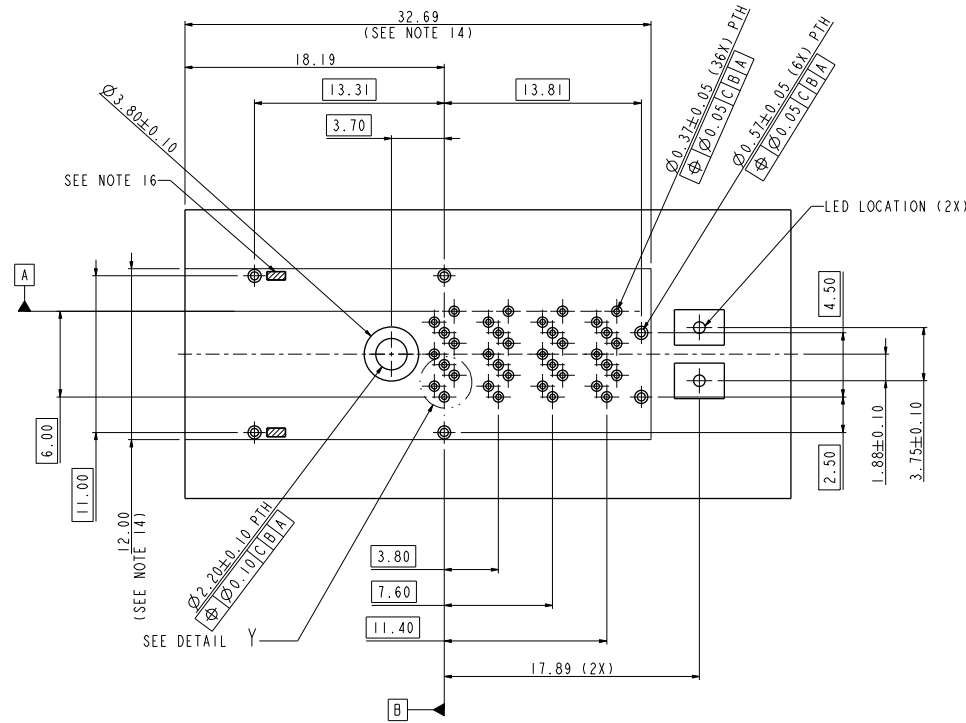


SCALE 5.000

I/O BRACKET CUT OUT
(BRACKET NOT SUPPLIED)

Copyright FCI.

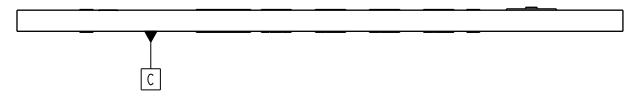
spec ref	-	dr	Benny Chen	2012-05-07	projection	MM	size	A2	scale	1.000
tolerance std	ISO 406 ISO 1101	eng	De-Feng Qin	2013-03-04			ecn no	-	rel level	-
TOLERANCES UNLESS OTHERWISE SPECIFIED		chr	Jon Qin	2013-03-04			product family	MINI-SAS HD	rel level	-
surface	linear	0.X	±0.5		title 1x1 EXTERNAL ASSEMBLY WITH LIGHT PIPE MINI-SAS HD	dwg no 10120960	rev A			
		0.XX	±0.3							
	angular	0°	±3°							
ISO 1302				www.fci.com	cat. no.	-	Product - Customer Drw	sheet 2 of 6		



DETAIL Y
SCALE 10.000

- NOTES:
9. RECOMMENDED DRILL SIZE FOR Ø0.37 FINISHED PTH IS Ø0.457.
 10. RECOMMENDED ANNULAR RING AROUND Ø0.37 FINISHED PTH IS Ø0.73.
 11. RECOMMENDED DRILL SIZE FOR Ø0.57 FINISHED PTH IS Ø0.68.
 12. RECOMMENDED ANNULAR RING AROUND Ø0.57 FINISHED PTH IS Ø0.93.
 13. MINIMUM RECOMMENDED CENTER TO CENTER SPACING BETWEEN ADJACENT CONNECTORS: 14.00mm
 14. CONNECTOR KEEP OUT AREA.
 15. MINIMUM PCB THICKNESS: 1.57mm.
 16. CAGE STAND OFF AREA, NO TRACES ON SURFACE OF PCB IN THESE AREAS.

RECOMMENDED BOARD LAYOUT
SEE SFF-8644 FOR DETAIL

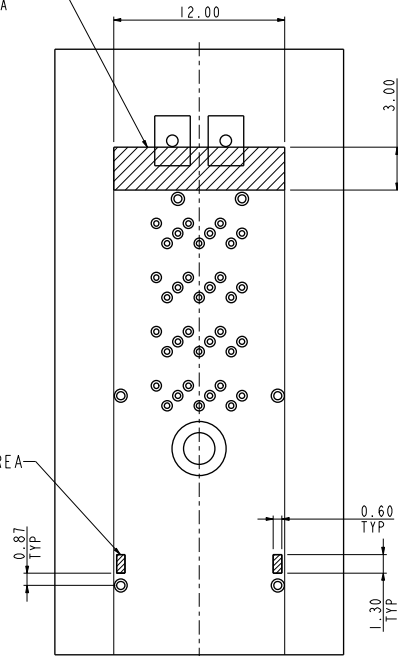


Copyright FCI

spec ref	-	dr	Benny Chen	2012-05-07	projection	MM	size	A2	scale	1.000
tolerance std	ISO 406 ISO 1101	eng	De-Feng Qin	2013-03-04			ecn no	-	rel level	-
TOLERANCES UNLESS OTHERWISE SPECIFIED		chr	Jon Qin	2013-03-04						
surface	linear	appr	Pei-Ming Zheng	2013-03-04	product family	MINI-SAS HD	cat. no	10120960	rev	A
ISO 1302	angular	0°	±3°	www.fcicom	Product - Customer Drw	sheet 3 of 6				

RECOMMENDED KEEP OUT AREAS

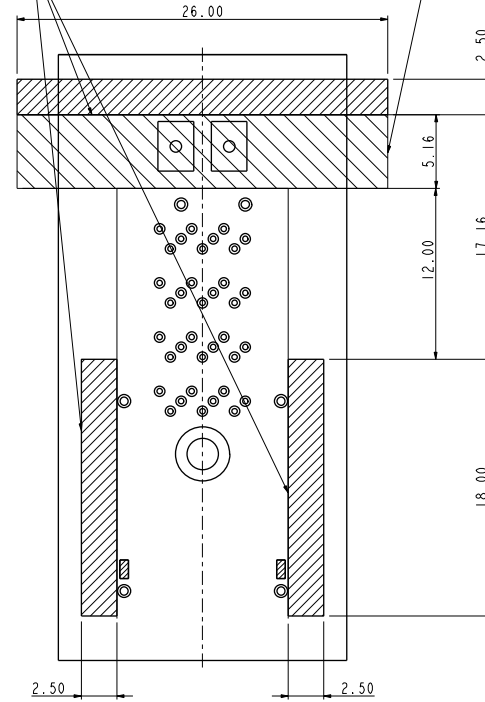
RECOMMENDED INSERTION TOOL
KEEP OUT AREA
NO COMPONENTS IN THIS AREA
MORE THAN 7.50mm TALL



CAGE STAND OFF KEEP OUT AREA

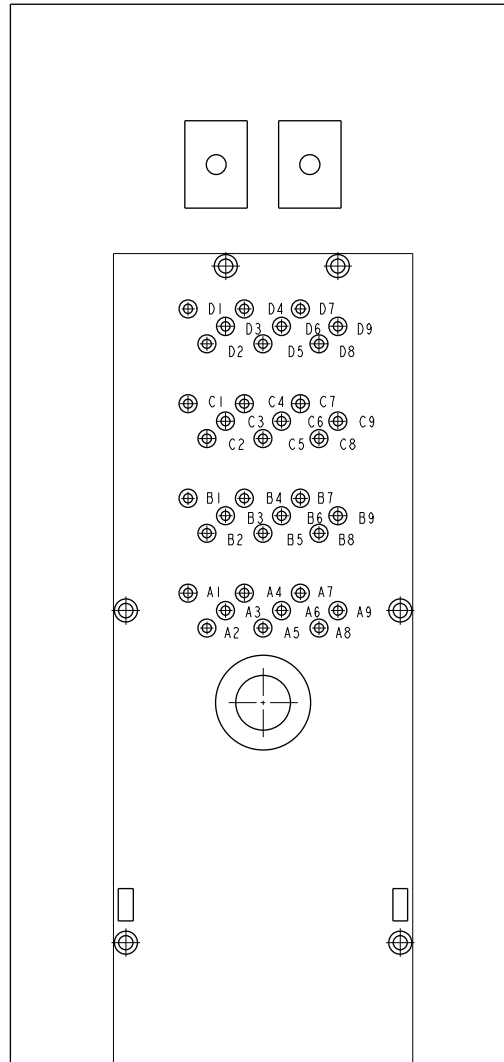
RECOMMENDED EXTRACTION TOOL
KEEP OUT AREA
NO COMPONENTS IN THESE AREAS

RECOMMENDED EXTRACTION TOOL
KEEP OUT AREA
NO COMPONENTS IN THESE AREAS



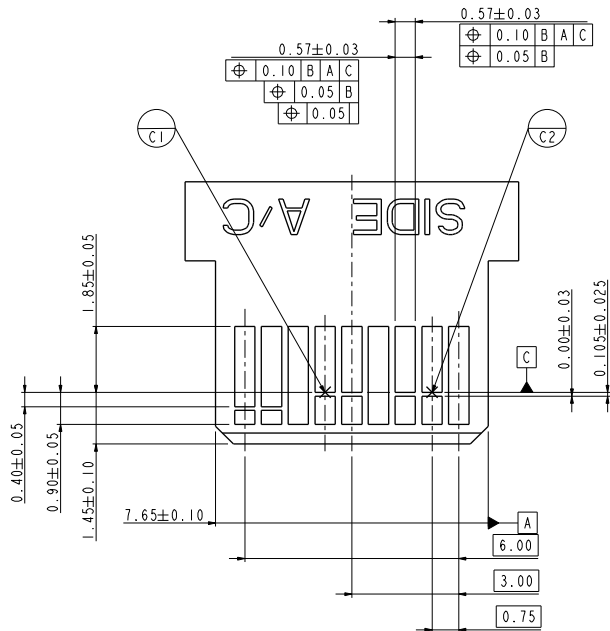
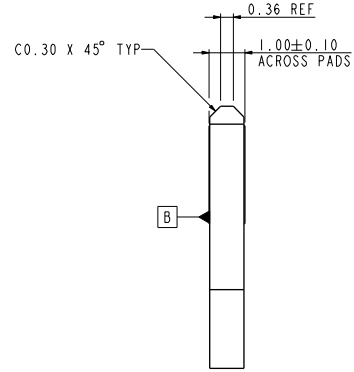
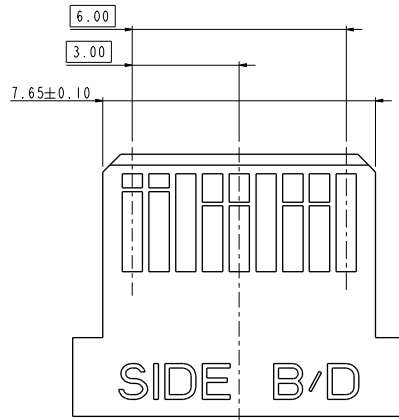
spec ref	-	dr	Benny Chen	2012-05-07	projection	MM	size	A2	scale	1.000		
tolerance std	ISO 406 ISO 1101	eng	De-Feng Qin	2013-03-04	chr	Jon Qin	2013-03-04	ecn no	-	-		
TOLERANCES UNLESS OTHERWISE SPECIFIED		appr	Pei-Ming Zheng	2013-03-04	product family	MINI-SAS HD	rel level	-	-	-		
surface	linear	0.X	±0.5	FCI www.fci.com	Title		1x1 EXTERNAL ASSEMBLY WITH LIGHT PIPE		cat. no.	10120960	rev	A
		0.XX	±0.3		MINI-SAS HD		diag no	-	-	-	-	
	angular	0°	±3°		Product - Customer Drw		sheet	4 of 6	-	-	-	

PIN OUT DESIGNATIONS



Copyright FCI.
FCI

spec ref	-	dr	Benny Chen	2012-05-07	projection	MM	size	A2	scale	1.000
tolerance std	ISO 406 ISO 1101	eng	De-Feng Qin	2013-03-04	chr	Jon Qin	2013-03-04	ecm no	-	-
TOLERANCES UNLESS OTHERWISE SPECIFIED		appr	Pei-Ming Zheng	2013-03-04	product family	MINI-SAS HD	rel level	-	-	-
surface	linear	0.X	±0.5	FCI	ixl EXTERNAL ASSEMBLY WITH LIGHT PIPE		cat. no	10120960	rev	A
		0.XX	±0.3		MINI-SAS HD					
	angular	0°	±3°		www.fcicom					
ISO 1302								Product - Customer Drw	sheet 5 of 6	



RECOMMENDED PLUG PADDLE CARD
SEE SFF-8644 FOR DETAIL

Copyright FCI
FCI

NOTES:

- 17. 0.05 MINIMUM KEEP OUT FOR SOLDER MASK AROUND ALL PADS.
- 18. DATUM C TARGETS ARE DEFINED BY THE RESPECTIVE PAD CENTER LINES AND THE LEADING EDGE OF THE TARGET PADS.

spec ref	-	dr	Benny Chen	2012-05-07	projection	MM	size	A2	scale	1.000										
tolerance std	ISO 406 ISO 1101	eng	De-Feng Qin	2013-03-04			ecn no	-	rel level	-										
TOLERANCES UNLESS OTHERWISE SPECIFIED		chr	Jon Qin	2013-03-04							product family	MINI-SAS HD								
surface	<table border="1"> <tr> <td>linear</td> <td>0.X</td> <td>±0.5</td> </tr> <tr> <td></td> <td>0.XX</td> <td>±0.3</td> </tr> <tr> <td></td> <td>0.XXX</td> <td>±-</td> </tr> <tr> <td>angular</td> <td>0°</td> <td>±3°</td> </tr> </table>	linear	0.X	±0.5		0.XX	±0.3		0.XXX	±-	angular	0°	±3°	appr	Pei-Ming Zheng	2013-03-04	cat. no.	10120960	rev	A
linear	0.X	±0.5																		
	0.XX	±0.3																		
	0.XXX	±-																		
angular	0°	±3°																		
ISO 1302		www.fcicom			Product - Customer Drw	sheet 6 of 6														