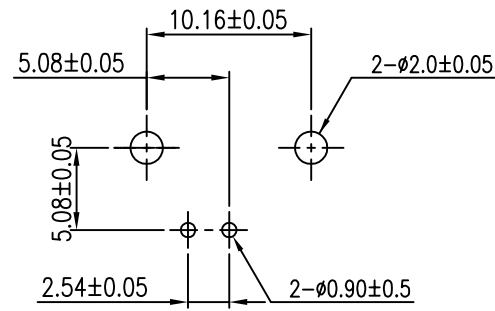
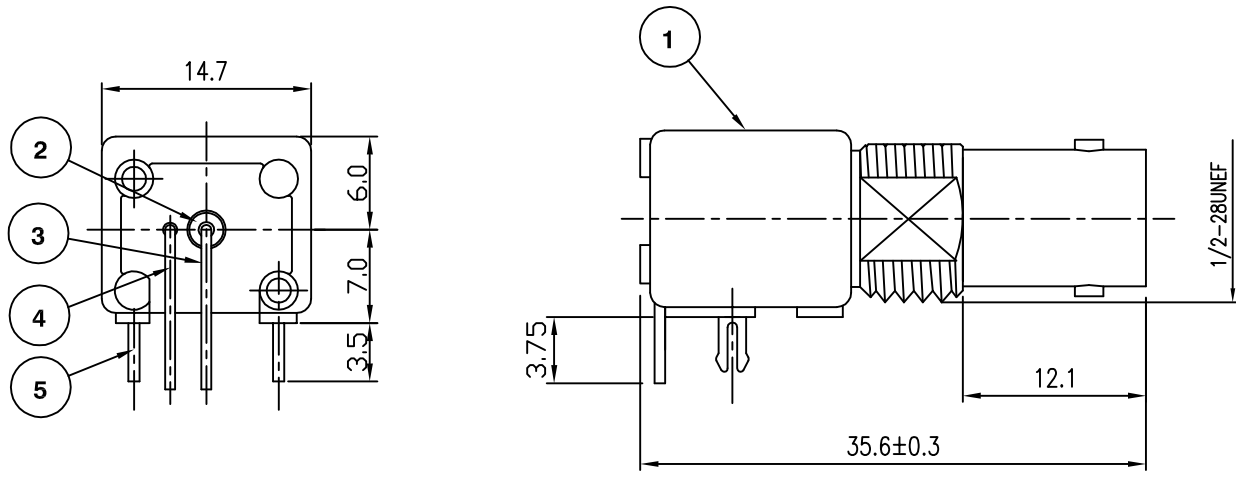
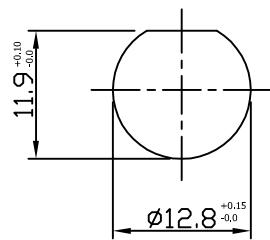


RoHS COMPLIANT



Recommended PCB Layout



Panel Cutout

Electrical Characteristics

Nominal Impedance:	75 ohms
Frequency Range:	DC to 1 GHz
VSWR:	1.3:1 maximum
Insertion Loss:	0.2 dB at 1 GHz
Operating Voltage (rms):	500 V maximum at sea level
Dielectric Withstand Voltage (rms):	1500 V maximum at sea level
Contact Resistance:	3.0 milliohms maximum
Insulation Resistance:	500 megohms minimum

Mechanical Characteristics

Mating Cycles:	500 cycles minimum
Interface Dimensions:	Conform to MIL-C-39012

Environmental Characteristics

Temperature Range:	-55 °C to +125 °C
--------------------	-------------------

PART	DESCRIPTION
1	Body Zinc Alloy, nickel plated
2	Dielectric PTFE Teflon
3	Contact Phosphor Bronze, gold plated
4	Ground Contact Copper Clad Steel, tin plated
5	Captive Leg Phosphor Bronze, tin plated >5 microns

Temperature range corrected	MS	4	30 May 12
Dimension Change	JC	3	27 Oct 08
CAD Issue		2	
First Issue	MS	1	12 May 08
DESCRIPTION OF REVISION	APPVD	ISS	DATE



Cinch Connectivity Solutions
7-13 Russel Way,
Widford Industrial Estate,
Chelmsford, Essex,
CM1 3AA, UK.
Tel: +44 (0) 1245 359515
Fax: +44 (0) 1245 358938

SCALE: Not To Scale	DRAWN BY: M Spooner
DIMENSIONS: mm	CHECKED BY: L Barnsley
TOLERANCES: ± 0.2mm unless otherwise stated	APPROVED BY: M Spooner
	DATE: 21 May 08

TITLE:
**Low Profile BNC Shielded
Right Angle PCB Mount Jack**

PART NUMBER:
VBM211C-75HT

PAGE: 1 of 1