

4

3

2

1

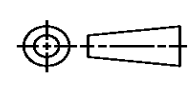
THIS DRAWING IS UNPUBLISHED. RELEASED FOR PUBLICATION  
 © COPYRIGHT ALL RIGHTS RESERVED.

| LOC | DIST | REVISIONS     |           |     |      |
|-----|------|---------------|-----------|-----|------|
| P   | LTR  | DESCRIPTION   | DATE      | DWN | APVD |
|     | K1   | ECR-16-009823 | 25JUL2016 | GK  | SD   |
|     |      |               |           |     |      |
|     |      |               |           |     |      |

# REPLACED BY OCEAN STYLE APPLICATOR PART NUMBER 2150108-1

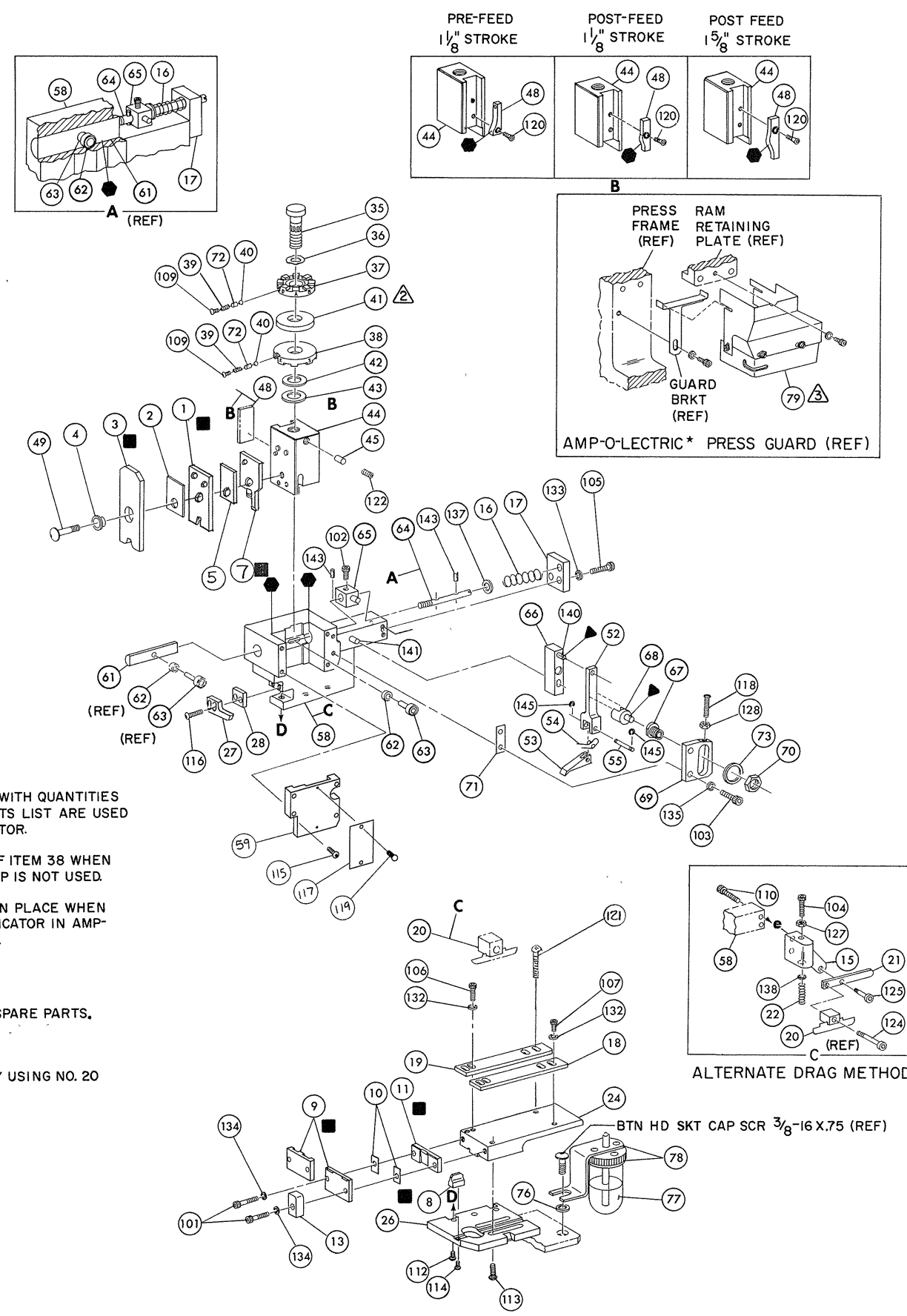
FOR REPLACEMENT PARTS FOR APPLICATOR 466415-1  
 REFER TO ADDITIONAL PAGE(S). SPARE PARTS KIT (IF LISTED)  
 WILL REMAIN AVAILABLE.

THE REPLACEMENT OCEAN STYLE APPLICATOR HAS THE  
 SAME TERMINATOR/PRESS INTERFACE AS APPLICATOR  
 466415-1

|   |  |   |                  |   |                     |
|---|--|---|------------------|---|---------------------|
| THIS DRAWING IS A CONTROLLED DOCUMENT.  |  | DWN   | GOPALAKRISHNA HV |   |                     |
| DIMENSIONS:   |  | CHK   | GOPALAKRISHNA HV |   |                     |
|  |  | TOLERANCES UNLESS OTHERWISE SPECIFIED:                          |                  | APVD  |                     |
|   |  | 0 PLC ±<br>1 PLC ±<br>2 PLC ±<br>3 PLC ±<br>4 PLC ±<br>ANGLES ± |                  | STOUGH DALE   |                     |
| MATERIAL  |  | PRODUCT SPEC  |                  | NAME  |                     |
| FINISH  |  | APPLICATION SPEC  |                  | MINIATURE QUICK CHANGE<br>APPLICATOR END FEED .110 FASTON |                     |
|   |  | WEIGHT  | SIZE             | CAGE CODE   | DRAWING NO          |
|   |  |   | A3               |   | ©- 466415-1         |
|   |  | CUSTOMER DRAWING  |                  | SCALE   | SHEET 1 OF 2 REV K1 |



THIS IS A CONTROLLED DOCUMENT.



- NOTES:**
- 1. ONLY THE ITEMS WITH QUANTITIES SPECIFIED ON PARTS LIST ARE USED ON THIS APPLICATOR.
  - 2. USED IN PLACE OF ITEM 38 WHEN INSULATION CRIMP IS NOT USED.
  - 3. GUARD MUST BE IN PLACE WHEN OPERATING APPLICATOR IN AMP-O-LECTRIC PRESS.
- KEY:**
- RECOMMENDED SPARE PARTS.
  - ▲ LUBRICATE DAILY USING NO. 20 MACHINE OIL.
  - GREASE LIGHTLY.

| QTY | PART NO   | DESCRIPTION                                      | ITEM NO | QTY | PART NO    | DESCRIPTION                  | ITEM NO |
|-----|-----------|--|---------|-----|------------|------------------------------|---------|
| 2   | 21045-3   | RING, RETAINING 'C' (.187 DIA) FEED PIN          | 145     | 1   | 454220-2   | CAP, RAM                     | 59      |
| 2   | 5-21028-1 | PIN, SLOT SPG (.12 DIA X .50) FD ADJ ROD         | 144     | 1   | 453736-2   | HOUSING                      | 58      |
| 1   | 1-21030-7 | PIN, DOWEL (.187 DIA X 1.50) HOUSING             | 143     |     |            |                              | 57      |
| 1   | 1-21030-1 | PIN, DOWEL (.187 DIA X .50) LEVER                | 142     |     |            |                              | 56      |
| 1   | 22260-5   | WASHER, FLAT (NO 6) DRAG SPRING                  | 141     | 1   | 240624-1   | PIN, FEED FINGER             | 55      |
| 1   | 21899-4   | WASHER, FLAT (5/16 DIA) SCR ADJ                  | 140     | 1   | 691499-1   | SPRING, FEED FINGER          | 54      |
| 1   | 21024-5   | WASHER, LOCK (NO 10) FEED ADJ PLATE              | 139     | 1   | 690584-9   | FINGER, FEED                 | 53      |
| 2   | 21024-5   | WASHER, LOCK (NO 10) FEED ROD GUIDE              | 138     | 1   | 240634-1   | LEVER, TERMINAL              | 52      |
| 4   | 21024-4   | WASHER, LOCK (NO 8) STRIP GUIDE                  | 137     |     |            |                              | 51      |
| 1   | 21024-4   | WASHER, LOCK (NO 8) SHEAR BLADE                  | 136     |     |            |                              | 50      |
| 2   | 21024-5   | WASHER, LOCK (NO 10) FEED ADJ PLATE              | 135     | 1   | 690686-2   | BOLT, CRIMPER                | 49      |
| 2   | 21024-5   | WASHER, LOCK (NO 10) FEED ROD GUIDE              | 134     | 1   | 690501-4   | CAM, POST-FEED 1/8 STROKE    | 48      |
| 4   | 21024-4   | WASHER, LOCK (NO 8) STRIP GUIDE                  | 133     |     |            |                              | 47      |
| 1   | 21024-4   | WASHER, LOCK (NO 8) SHEAR BLADE                  | 132     |     |            |                              | 46      |
| 1   | 21018-4   | NUT, HEX MACH (4-40) DRAG                        | 131     | 1   | 690191-1   | PLUG, NYLON                  | 45      |
| 1   | 21068-5   | NUT, HEX MACH (6-32) FD ADJ PLATE                | 130     | 1   | 455674-6   | RAM                          | 44      |
| 1   | 21018-7   | NUT, HEX MACH (10-32) DRAG SPRING                | 129     | 1   | 690125-1   | WASHER, LAMINATED            | 43      |
| 1   | 21022-2   | NUT, HEX SELF-LKG (8-32) DRAG STUD               | 128     | 1   | 690124-1   | WASHER, RAM                  | 42      |
| 1   | 5-21004-7 | SCR, SKT HD SHLD (250 DIA X .25) DRAG ARM        | 127     | 2   | 23241-6    | SPACER, DISC                 | 41      |
| 1   | 21004-5   | SCR, SKT HD SHLD (250 DIA X 1.00) DRAG           | 126     | 2   | 690170-1   | BALL, STEEL                  | 40      |
| 1   | 4-21078-8 | SCR, SKT SET OVAL POINT (4-40 X .75) DRAG        | 125     | 2   | 690170-1   | SPRING, COMPRESSION          | 39      |
| 1   | 21009-2   | SCR, SKT SET (1/4-20 X 25) (LOC-WEL) RAM         | 124     | 1   | 690142-1   | DISC, INSULATION             | 38      |
| 1   | 2-21002-2 | SCR, BTN HD (8-32 X .50) STRIP GUIDE             | 123     | 1   | 9-690692-9 | DISC, WIRE                   | 37      |
| 1   | 1-21002-7 | SCR, BTN HD SKT CAP (6-32 X .38) CAM             | 122     | 1   | 22480-5    | WASHER, SPRING               | 36      |
| 2   | 21017-2   | SCR, DRIVE (2 X .19) ID PLATE                    | 121     | 1   | 690212-1   | POST, RAM                    | 35      |
| 1   | 3-21064-2 | SCR, RD HD MACH (6-32 X 1.50) FEED ADJ           | 120     |     |            |                              | 34      |
| 1   | 461264-1  | PLATE, ID  | 119     |     |            |                              | 33      |
| 2   | 2-21002-3 | SCR, BTN HD SKT CAP (8-32 X .62) STRIPPER        | 118     |     | 458980-    | APPLICATOR, BASIC (SUB ASSY) | 32      |
| 4   | 2-21002-9 | SCR, BTN HD SKT CAP (10-32 X .75) HSG CAP        | 117     |     |            |                              | 31      |
| 1   | 22733-8   | SCR, BTN HD SKT CAP (8-32 X .38) (LOC-WEL) ANVIL | 116     |     |            |                              | 30      |
| 4   | 3-21002-3 | SCR, BTN HD SKT CAP (1/4-20 X .50) STR GDE PL    | 115     |     |            |                              | 29      |
| 3   | 2-22733-9 | SCR, BTN HD SKT CAP (1/4-20 X .75) BASE PL       | 114     | 1   | 2690451-5  | SPACER, STRIPPER             | 28      |
| 2   | 2-21000-4 | SCR, SKT HD CAP (6-32 X 1.00) DRAG ADAPTOR       | 113     | 1   | 240639-4   | STRIPPER                     | 27      |
| 2   | 23030-1   | SCR, SKT HD CAP (6-32 X .25) (LOC-WEL) CP DISC   | 112     | 1   | 459717-1   | PLATE, BASE                  | 26      |
| 2   | 2-21000-5 | SCR, SKT HD CAP (8-32 X .25) STRIP GUIDE, FRONT  | 111     |     | 22354-8    | DRAG, STUD                   | 25      |
| 1   | 2-21000-6 | SCR, SKT HD CAP (8-32 X .38) STRIP GUIDE, REAR   | 110     | 1   | 455678-1   | PLATE, STRIP GUIDE           | 24      |
| 1   | 3-21000-7 | SCR, SKT HD CAP (10-32 X .75) FD ROD GUIDE       | 109     | 1   | 7-22282-5  | SPRING, DRAG                 | 23      |
| 1   | 3-21000-9 | SCR, SKT HD CAP (10-32 X 1.00) DRAG SPRING       | 108     | 1   | 240636-1   | LEVER, DRAG                  | 22      |
| 2   | 3-21000-6 | SCR, SKT HD CAP (10-32 X .62) FD ADJ PLATE       | 107     | 1   | 1-240696-1 | DRAG, STOCK                  | 21      |
| 1   | 3-21000-4 | SCR, SKT HD CAP (10-32 X .38) PIVOT BLK          | 106     | 1   | 2-458030-8 | GUIDE, STRIP (REAR)          | 20      |
| 2   | 3-21000-8 | SCR, SKT HD CAP (10-32 X .88) SHEAR PLATE        | 105     | 1   | 454204-1   | GUIDE, STRIP (FRONT)         | 19      |
| REF | 455745-1  | GUARD WINDOW                                     | 104     | 1   | 454178-1   | GUIDE, FEED ROD              | 18      |
| 1   | 465184-9  | LUBRICATOR ASSY                                  | 103     | 1   | 4-22284-9  | SPRING, FEED RETURN          | 17      |
| 1   | 455985-1  | OIL, LUBRICATING                                 | 102     | 1   | 454665-4   | ADAPTER, DRAG                | 16      |
| 1   | 454406-1  | SPACER, LUB BRACKET                              | 101     | 1   | 464524-1   | SPACER, DRAG ADAPTER         | 15      |
| 1   | 458109-1  | WASHER, FLAT (SPECIAL)                           | 79      |     |            |                              | 14      |
| 2   | 690603-1  | SPRING, ASSIST                                   | 78      |     |            |                              | 13      |
| 1   | 690517-1  | SPACER   | 77      |     |            |                              | 12      |
| 1   | 22594-8   | NUT, HEX   | 76      | 1   | 240644-1   | PLATE, REAR SHEAR            | 11      |
| 1   | 240628-1  | PLATE, ADJ                                       | 75      | 1   | 2-690482-4 | SPACER, HOLD DOWN            | 10      |
| 1   | 240626-1  | SHAFT, PIVOT                                     | 74      | 1   | 694442-3   | SPRING, HOLD DOWN            | 9       |
| 1   | 240633-1  | BUSHING  | 73      | 1   | 462374-1   | BLADE, SLUG                  | 8       |
| 1   | 455680-1  | LEVER, INTERMEDIATE                              | 72      | 1   | 2-455888-3 | HOLD DOWN, TERMINAL          | 7       |
| 1   | 240629-1  | BLOCK, PIVOT                                     | 71      | 1   | 238009-1   | SPACER, SHEAR BLADE          | 6       |
| 1   | 240632-2  | SCREW, ADJ                                       | 70      | 1   | 4-456134-0 | SPACER, TUBULAR              | 5       |
| 1   | 240659-3  | PIN, CAM ROLLER                                  | 69      | 1   | 455888-1   | CRIMPER, INSULATION          | 4       |
| 1   | 240658-1  | CAM, ROLLER                                      | 68      | 1   | 462373-1   | SPACER, INSULATION           | 3       |
| 1   | 454398-1  | ROD, FEED  | 67      | 1   |            | CRIMPER, WIRE                | 2       |
| 1   |           |  | 66      | 1   |            |                              | 1       |
| 1   |           |  | 65      |     |            |                              |         |
| 1   |           |  | 64      |     |            |                              |         |
| 1   |           |  | 63      |     |            |                              |         |
| 1   |           |  | 62      |     |            |                              |         |
| 1   |           |  | 61      |     |            |                              |         |
| 1   |           |  | 60      |     |            |                              |         |
| 1   |           |  | 59      |     |            |                              |         |
| 1   |           |  | 58      |     |            |                              |         |
| 1   |           |  | 57      |     |            |                              |         |
| 1   |           |  | 56      |     |            |                              |         |
| 1   |           |  | 55      |     |            |                              |         |
| 1   |           |  | 54      |     |            |                              |         |
| 1   |           |  | 53      |     |            |                              |         |
| 1   |           |  | 52      |     |            |                              |         |
| 1   |           |  | 51      |     |            |                              |         |
| 1   |           |  | 50      |     |            |                              |         |
| 1   |           |  | 49      |     |            |                              |         |
| 1   |           |  | 48      |     |            |                              |         |
| 1   |           |  | 47      |     |            |                              |         |
| 1   |           |  | 46      |     |            |                              |         |
| 1   |           |  | 45      |     |            |                              |         |
| 1   |           |  | 44      |     |            |                              |         |
| 1   |           |  | 43      |     |            |                              |         |
| 1   |           |  | 42      |     |            |                              |         |
| 1   |           |  | 41      |     |            |                              |         |
| 1   |           |  | 40      |     |            |                              |         |
| 1   |           |  | 39      |     |            |                              |         |
| 1   |           |  | 38      |     |            |                              |         |
| 1   |           |  | 37      |     |            |                              |         |
| 1   |           |  | 36      |     |            |                              |         |
| 1   |           |  | 35      |     |            |                              |         |
| 1   |           |  | 34      |     |            |                              |         |
| 1   |           |  | 33      |     |            |                              |         |
| 1   |           |  | 32      |     |            |                              |         |
| 1   |           |  | 31      |     |            |                              |         |
| 1   |           |  | 30      |     |            |                              |         |
| 1   |           |  | 29      |     |            |                              |         |
| 1   |           |  | 28      |     |            |                              |         |
| 1   |           |  | 27      |     |            |                              |         |
| 1   |           |  | 26      |     |            |                              |         |
| 1   |           |  | 25      |     |            |                              |         |
| 1   |           |  | 24      |     |            |                              |         |
| 1   |           |  | 23      |     |            |                              |         |
| 1   |           |  | 22      |     |            |                              |         |
| 1   |           |  | 21      |     |            |                              |         |
| 1   |           |  | 20      |     |            |                              |         |
| 1   |           |  | 19      |     |            |                              |         |
| 1   |           |  | 18      |     |            |                              |         |
| 1   |           |  | 17      |     |            |                              |         |
| 1   |           |  | 16      |     |            |                              |         |
| 1   |           |  | 15      |     |            |                              |         |
| 1   |           |  | 14      |     |            |                              |         |
| 1   |           |  | 13      |     |            |                              |         |
| 1   |           |  | 12      |     |            |                              |         |
| 1   |           |  | 11      |     |            |                              |         |
| 1   |           |  | 10      |     |            |                              |         |
| 1   |           |  | 9       |     |            |                              |         |
| 1   |           |  | 8       |     |            |                              |         |
| 1   |           |  | 7       |     |            |                              |         |
| 1   |           |  | 6       |     |            |                              |         |
| 1   |           |  | 5       |     |            |                              |         |
| 1   |           |  | 4       |     |            |                              |         |
| 1   |           |  | 3       |     |            |                              |         |
| 1   |           |  | 2       |     |            |                              |         |
| 1   |           |  | 1       |     |            |                              |         |

|                                 |                |                |     |
|---------------------------------|----------------|----------------|-----|
| REMARKS                         |                | NO             | REV |
| TO APPLY TERMINAL SPEC 114-2028 |                |                |     |
| APPL USED ON MACHINE PART NO    | MACH SERIAL NO | DISTRIBUTION   |     |
| CUSTOMER NAME                   | APPL SERIAL NO | ORIGINAL       |     |
| ADDRESS                         | PURCHASE ORDER | CUSTOMER COPY  |     |
| CITY                            | ENG APP        | FIELD ENG COPY |     |

| CRIMPING DATA |              |           |                   | APPLICATOR WILL APPLY |         |
|---------------|--------------|-----------|-------------------|-----------------------|---------|
| PAD LTR       | CRIMP HEIGHT | WIRE SIZE | WIRE STRIP LENGTH |                       |         |
| A             | .046         | 18        |                   |                       | 61481   |
| B             | .040         | 20        |                   |                       | 62336   |
| C             | .037         | 22        |                   |                       | 62840   |
| D             | NOT USED     |           |                   |                       | 63101   |
|               |              |           |                   |                       | 1212171 |

|                       |          |                  |            |           |
|-----------------------|----------|------------------|------------|-----------|
| CRIMP                 | SIZE     | TYPE             | FEED       | APPL INST |
| WIRE                  | .062     | F                | 430        | A1 8039   |
| INSUL                 | .100     | F                |            |           |
| WIRE RANGE            | 18 TO 22 | INSULATION RANGE | 060 TO 100 | PRESS NO  |
| REMARKS: AMPOMATOR #6 |          |                  |            |           |