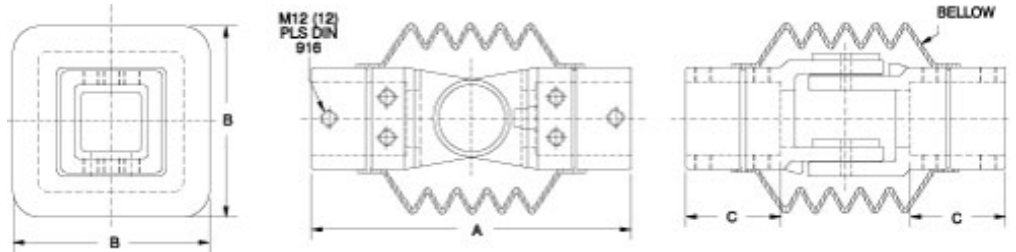


Heavy Duty Intermediate Joint *HDSSIJ Series*



- 4G-s.g. cast iron.
- Integrated movement stop.
- One piece bellow.
- Two sleeves.
- Features a rotation range of 170°.



Part No.	System	A	B	C	Ship Wt. lbs.
R147-015-000R	50	236	140	70	9
R147-015-200R	80	320	180	97	24

Data subject to change without notice