

THIS DRAWING IS UNPUBLISHED. RELEASED FOR PUBLICATION JAN ,2006.

© COPYRIGHT 2006 BY TYCO ELECTRONICS CORPORATION. ALL RIGHTS RESERVED.

| LOC | DIST | REVISIONS |     |               |         |     |      |
|-----|------|-----------|-----|---------------|---------|-----|------|
| E   | B    | P         | LTR | DESCRIPTION   | DATE    | DWN | APVD |
|     |      | C         |     | ECR-06-001518 | 26JAN06 | JMS | FWK  |

NOTES:

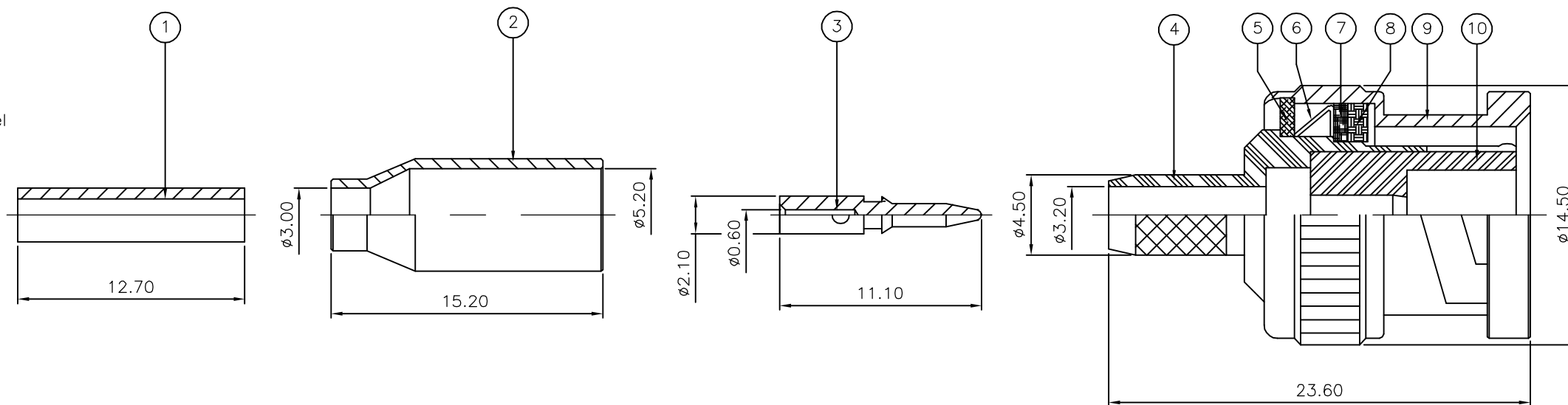
- 1 PACK IN ACCORDANCE WITH AMP SPEC 107-3275
- 2 100 TRAY PACK IN ACCORDANCE WITH AMP SPEC 107-3275
- 3 Au PLATING
- 4 Ni PLATING
- 5 THIS ITEM MUST BE WHITE

- 6 HAND TOOL : 9-1478240-0
- 7 DIE SET : 9-1478242-0

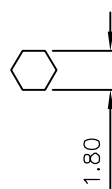
|                               |                            |
|-------------------------------|----------------------------|
| 8 ELECTRICAL CHARACTERISTICS  |                            |
| FREQUENCY RANGE:              | DC - 4 GHz                 |
| NOMINAL IMPEDANCE:            | 50 Ohm                     |
| INSULATION RESISTANCE:        | 5000 MOhm                  |
| WORKING VOLTAGE:              | 500 Volts RMS at Sea Level |
| DIELECTRIC WITHSTAND VOLTAGE: | 1500 Volts RMS Max         |
| CONTACT RESISTANCE:           |                            |
| CENTRE CONTACT:               | 1.50 mOhm Max              |
| OUTER CONTACT:                | 0.20 mOhm Max              |
| VSWR @ 4GHz:                  | 1.30:1 Max                 |
| INSERTION LOSS dB @ x 3 GHz:  | 0.20 Max                   |

|                               |                |
|-------------------------------|----------------|
| 9 MECHANICAL CHARACTERISTICS  |                |
| COUPLING NUT RETENTION FORCE: | 445N Min       |
| CABLE RETENTION FORCE:        | 85N Min        |
| DURABILITY:                   | 500 Cycles Min |

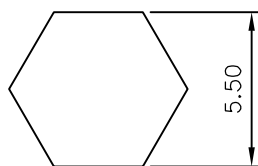
|                                  |                  |
|----------------------------------|------------------|
| 10 ENVIRONMENTAL CHARACTERISTICS |                  |
| OPERATING TEMPERATURE:           | -65 to +165 DegC |



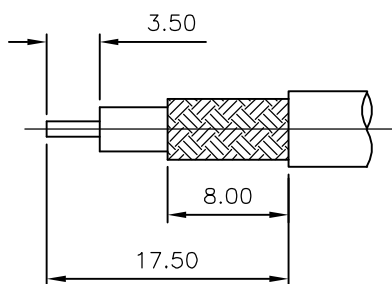
RECOMMENDED CENTRE CONTACT A/F HEX



RECOMMENDED CRIMP SLEEVE A/F HEX



RECOMMENDED CABLE STRIPPING DIM'S



| QTY  | QTY PER ASSY | MATERIAL        | DESCRIPTION      | ITEM        |
|------|--------------|-----------------|------------------|-------------|
| 1    | 1            | PTFE            | INSULATION       | 10          |
| 1    | 1            | BRASS           | △ SHELL          | 9           |
| 1    | 1            | SILICONE RUBBER | △ GASKET         | 8           |
| 1    | 1            | BRASS           | △ RETAINING RING | 7           |
| 1    | 1            | SPRING STEEL    | SPRING           | 6           |
| 1    | 1            | BRASS           | △ WASHER         | 5           |
| 1    | 1            | BRASS           | △ BODY           | 4           |
| 1    | 1            | BRASS           | △ CONTACT        | 3           |
| 1    | 1            | BRASS           | △ FERRULE        | 2           |
| 1    | 1            | POM             | INSULATION       | 1           |
| 6--0 | 1--0         |                 | MATERIAL         | DESCRIPTION |
| △    | △            |                 |                  | ITEM        |

QUANTITY PER ASSY PARTS LIST

|  |  |                             |   |  |
|--|--|-----------------------------|---|--|
| THIS DRAWING IS A CONTROLLED DOCUMENT. |  | DWN J.SANDWELL 26JAN06      | Tyco Electronics Corporation<br>Bideford EX39 4HE                             |  |
| DIMENSIONS: mm                         |  | CHK S.PARLOW 26JAN06        | NAME  |  |
| TOLERANCES UNLESS OTHERWISE SPECIFIED: |  | APVD F.WHEELER-KING 26JAN06 | BNC STRAIGHT PLUG CRIMP 50 OHM<br>RG174A/U, 188A/U, 316/U, URM95, KX3B, KX22A |  |
| 0 PLC ± -                              |  | PRODUCT SPEC                | SIZE CAGE CODE DRAWING NO RESTRICTED TO                                       |  |
| 1 PLC ± -                              |  | APPLICATION SPEC            | A3 00779 C-1337534  |  |
| 2 PLC ± -                              |  | WEIGHT -                    | SCALE NTS SHEET 1 OF 1 REV C  |  |
| 3 PLC ± -                              |  | CUSTOMER DRAWING            |   |  |
| 4 PLC ± -                              |  |                             |   |  |
| ANGLES ± -                             |  |                             |   |  |
| FINISH -                               |  |                             |   |  |
| MATERIAL SEE TABLE                     |  |                             |   |  |